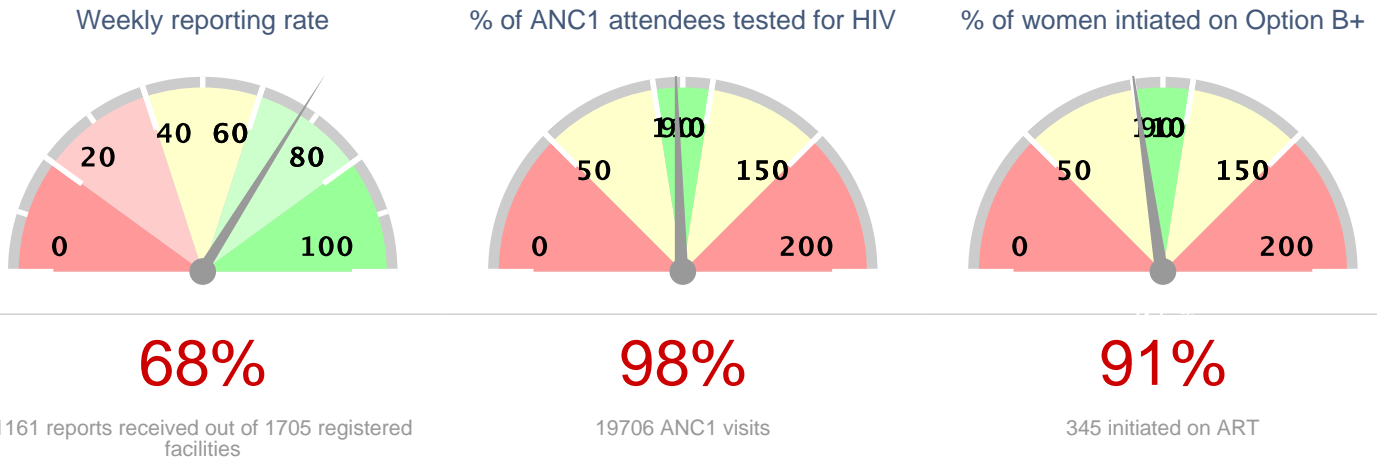


Ministry of Health Option B+ Weekly Report (3.2)

Week ending 2018-08-12 (2018W32)

Summary



Stockouts and missed appointments

| | | |
|------------------------------|-----|----|
| Facilities without ARVs | 13 | 1% |
| Facilities without test kits | 57 | 5% |
| Number missed appointments | 932 | |

1st PCR EID testing for August 2015*

| | |
|------------------------------|-------|
| Number of EID tests | 4936 |
| Number of positive EID tests | 169 |
| Proportion testing positive | 3.42% |

The week in numbers

Number of reports received this week: 1161

Number of facilities registered for B+: 1705

Testing coverage for this week

| | |
|--------------------------------------|-----------|
| Number of ANC 1 visits | 19706 |
| No. tested for HIV at ANC 1 | 94% 18498 |
| No. HIV+ women identified at ANC 1 | 1194 |
| Newly identified thru testing | 30% 364 |
| With a known status | 70% 830 |
| Proportion newly tested +ve at ANC 1 | 1.97% |
| Proportion of +ve women at ANC 1 | 6.06% |

ART coverage for this week

| | |
|---|---------|
| Total HIV + Women at ANC 1 | 1194 |
| Total already on ART | 68% 811 |
| Total to be initiated | 71% 849 |
| Total no of women initiated on ART | 345 |
| Proportion of women initiated on ART | 246% |
| Proportion with known status already on ART | 97.71% |

This proportion shows how many women who have a known positive status are already on ART

The data as presented in this report using data from MoH/EOC Weekly Reporting and CPHL. PMTCT service delivery data is weekly data, EID testing data is cumulative monthly. EID number includes data up 2013-09-01. Starting from June 2014, EID data contains only 1st PCR tests.

Ministry of Health Option B+ Weekly Report (3.2)

Week ending 2018-08-12 (2018W32)

Overall performance per IP

Note: IP data does not add up to national totals due to the fact that IPs overlap in districts. EID data is aggregate for all districts in which an IP operates, and not based on individual facilities supported by an IP.

| District and weekly rate | | | | For Week ending 2018-08-12 (2018W32) | | | | | | | | | EID November 2015 | | Analysis | | |
|--------------------------|----------------------------|-----------------------------|---|--------------------------------------|--|--|--|--|--------------------------------------|---------------------------|----------------------|------------------------------------|---|--|--|--|--|
| Level | No of facilities reporting | No of registered facilities | Proportion of facilities reporting (reporting rate) | a. Total ANC1 visits | b. Total No of mothers tested at 1st ANC visit | c. Total No HIV Tested Positive at 1st ANC visit | d. Total No with known HIV+ status by ANC1 | e. Total initiating Option B+ at 1st ANC visit | f. Total no on ART treatment by ANC1 | h. Has Test Kits stockout | i. Has ARVs stockout | A. Number of EID tests carried out | B. Proportion of EID tests testing positive for HIV | 1. Proportion of ANC1 with unknown status tested | 2. Proportion of HIV+ women not yet on ART initiated | 3. Proportion of women tested positive out of those tested | |
| Uganda | 1157 | 1704 | 68% | 19631 | 18449 | 362 | 828 | 344 | 810 | 56 | 13 | 4936 | 3.42% | 98% | 92% | 1.96% | |
| Baylor | 97 | 120 | 81% | 1372 | 1199 | 19 | 69 | 22 | 66 | 7 | 0 | 402 | 4.48% | 92% | 100% | 1.58% | |
| CAF | 3 | 6 | 50% | 11 | 8 | 0 | 3 | 0 | 3 | 0 | 0 | 1133 | 3.09% | 100% | 0% | 0% | |
| CUAMM | 35 | 63 | 56% | 410 | 394 | 0 | 1 | 0 | 0 | 0 | 0 | 29 | 6.9% | 96% | 0% | 0% | |
| HIWA | 8 | 9 | 89% | 44 | 41 | 3 | 2 | 4 | 2 | 0 | 0 | 1281 | 2.65% | 98% | 100% | 7.32% | |
| IDI-KCC | 7 | 7 | 100% | 1170 | 1100 | 37 | 69 | 36 | 68 | 0 | 0 | 734 | 2.72% | 100% | 95% | 3.36% | |
| IDI | 197 | 199 | 99% | 3399 | 3282 | 29 | 89 | 27 | 85 | 2 | 0 | 330 | 3.64% | 99% | 77% | 0.88% | |
| IRCU | 13 | 15 | 87% | 360 | 344 | 5 | 14 | 5 | 14 | 0 | 2 | 1457 | 3.09% | 99% | 100% | 1.45% | |
| Kalangala | 3 | 15 | 20% | 19 | 22 | 1 | 0 | 1 | 0 | 0 | 0 | 32 | 0% | 116% | 100% | 4.55% | |
| Mildmay | 134 | 155 | 86% | 2378 | 2240 | 87 | 145 | 84 | 141 | 4 | 1 | 659 | 3.19% | 100% | 98% | 3.88% | |
| MJAP | 17 | 22 | 77% | 606 | 540 | 18 | 45 | 21 | 39 | 3 | 0 | 896 | 3.12% | 96% | 95% | 3.33% | |
| MRC-UVRI | 1 | 1 | 100% | 4 | 4 | 0 | 0 | 0 | 0 | 0 | 0 | 734 | 2.72% | 100% | 0% | 0% | |
| PREFA | 80 | 106 | 75% | 963 | 900 | 36 | 62 | 31 | 61 | 6 | 2 | 567 | 3.53% | 100% | 91% | 4% | |
| Reach Out | 3 | 7 | 43% | 7 | 6 | 1 | 3 | 3 | 4 | 0 | 0 | 1085 | 3.04% | 150% | 0% | 16.67% | |
| RHITES-EC | 80 | 121 | 66% | 1637 | 1519 | 22 | 34 | 22 | 33 | 8 | 2 | 279 | 2.15% | 95% | 92% | 1.45% | |
| RHITES-E | 126 | 161 | 78% | 1941 | 1839 | 15 | 23 | 11 | 20 | 6 | 5 | 183 | 2.19% | 96% | 71% | 0.82% | |
| RHITES-SW | 189 | 215 | 88% | 2381 | 2134 | 54 | 140 | 54 | 136 | 17 | 1 | 648 | 3.55% | 95% | 96% | 2.53% | |
| RHSP | 9 | 15 | 60% | 83 | 66 | 1 | 4 | 1 | 6 | 1 | 0 | 155 | 3.23% | 84% | 100% | 1.52% | |
| RHU | 0 | 1 | 0% | | | | | | | | | 64 | 1.56% | null% | null% | | |
| RTI | 7 | 19 | 37% | 76 | 81 | 1 | 10 | 1 | 10 | 2 | 0 | 2002 | 3.05% | 123% | 100% | 1.23% | |
| SUSTAIN | 10 | 12 | 83% | 514 | 468 | 11 | 35 | 11 | 35 | 0 | 0 | 723 | 2.77% | 98% | 100% | 2.35% | |
| TASO | 47 | 65 | 72% | 706 | 640 | 10 | 33 | 8 | 32 | 1 | 2 | 1672 | 3.11% | 95% | 83% | 1.56% | |
| TASO Teso | 65 | 93 | 70% | 984 | 978 | 3 | 25 | 4 | 25 | 2 | 0 | 170 | 4.71% | 102% | 133% | 0.31% | |
| UCMB | 14 | 18 | 78% | 519 | 493 | 8 | 29 | 8 | 29 | 0 | 0 | 1907 | 2.83% | 101% | 100% | 1.62% | |
| UHMG | 5 | 18 | 28% | 11 | 10 | 0 | 1 | 0 | 0 | 0 | 0 | 1232 | 3.17% | 100% | 0% | 0% | |
| UPMB | 7 | 13 | 54% | 88 | 83 | 1 | 4 | 1 | 4 | 0 | 0 | 1399 | 3.5% | 99% | 100% | 1.2% | |
| USAID ASSIST | 69 | 125 | 55% | 1093 | 1110 | 33 | 48 | 26 | 50 | 1 | 0 | 569 | 3.69% | 106% | 84% | 2.97% | |
| USAID PHS | 27 | 39 | 69% | 451 | 427 | 9 | 20 | 9 | 20 | 1 | 2 | 2064 | 3.29% | 99% | 100% | 2.11% | |

Ministry of Health Option B+ Weekly Report (3.2)

Week ending 2018-08-12 (2018W32)

| District and weekly rate | | | For Week ending 2018-08-12 (2018W32) | | | | | | | | | EID November 2015 | | Analysis | | |
|--------------------------|----------------------------|-----------------------------|---|----------------------|--|--|--|--|--------------------------------------|---------------------------|----------------------|------------------------------------|---|--|--|--|
| Level | No of facilities reporting | No of registered facilities | Proportion of facilities reporting (reporting rate) | a. Total ANC1 visits | b. Total No of mothers tested at 1st ANC visit | c. Total No HIV Tested Positive at 1st ANC visit | d. Total No with known HIV+ status by ANC1 | e. Total initiating Option B+ at 1st ANC visit | f. Total no on ART treatment by ANC1 | h. Has Test Kits stockout | i. Has ARVs stockout | A. Number of EID tests carried out | B. Proportion of EID tests testing positive for HIV | 1. Proportion of ANC1 with unknown status tested | 2. Proportion of HIV+ women not yet on ART initiated | 3. Proportion of women tested positive out of those tested |
| Walter Reed | 18 | 64 | 28% | 289 | 274 | 5 | 12 | 5 | 12 | 1 | 0 | 39 | 5.13% | 99% | 100% | 1.82% |

EID data provided by CPHL up to 2015-12-10 cumulative for the entire month of November 2015

Overall performance per district

Note:

Ministry of Health Option B+ Weekly Report (3.2)

Week ending 2018-08-12 (2018W32)

| District and weekly rate | | | | For Week ending 2018-08-12 (2018W32) | | | | | | | | | EID November 2015 | | Analysis | | |
|--------------------------|----------------------------|-----------------------------|---|--------------------------------------|--|--|--|--|--------------------------------------|---------------------------|----------------------|------------------------------------|---|--|--|--|--|
| Level | No of facilities reporting | No of registered facilities | Proportion of facilities reporting (reporting rate) | a. Total ANC1 visits | b. Total No of mothers tested at 1st ANC visit | c. Total No HIV Tested Positive at 1st ANC visit | d. Total No with known HIV+ status by ANC1 | e. Total initiating Option B+ at 1st ANC visit | f. Total no on ART treatment by ANC1 | h. Has Test Kits stockout | i. Has ARVs stockout | A. Number of EID tests carried out | B. Proportion of EID tests testing positive for HIV | 1. Proportion of ANC1 with unknown status tested | 2. Proportion of HIV+ women not yet on ART initiated | 3. Proportion of women tested positive out of those tested | |
| Uganda | 1157 | 1704 | 68% | 19631 | 18449 | 362 | 828 | 344 | 810 | 56 | 13 | 4936 | 3.42% | 98% | 92% | 1.96% | |
| Abim | 6 | 8 | 75% | 51 | 51 | 0 | 0 | 0 | 0 | 0 | 0 | 7 | 14.29% | 100% | 0% | 0% | |
| Adjumani | 12 | 12 | 100% | 112 | 111 | 0 | 1 | 0 | 1 | 0 | 0 | 11 | 9.09% | 100% | 0% | 0% | |
| Agago | 4 | 9 | 44% | 82 | 76 | 1 | 6 | 1 | 6 | 0 | 0 | 33 | 9.09% | 100% | 100% | 1.32% | |
| Alebtong | 7 | 7 | 100% | 268 | 260 | 7 | 4 | 3 | 7 | 0 | 0 | 23 | 8.7% | 98% | 75% | 2.69% | |
| Amolatar | 4 | 5 | 80% | 56 | 52 | 0 | 3 | 0 | 4 | 0 | 0 | 18 | 11.11% | 98% | 0% | 0% | |
| Amudat | 3 | 4 | 75% | 44 | 44 | 0 | 0 | 0 | 0 | 0 | 0 | 3 | 33.33% | 100% | 0% | 0% | |
| Amuria | 10 | 14 | 71% | 141 | 165 | 0 | 4 | 0 | 4 | 0 | 0 | 26 | 0% | 120% | 0% | 0% | |
| Amuru | 3 | 8 | 38% | 32 | 32 | 1 | 0 | 1 | 0 | 0 | 0 | 8 | 0% | 100% | 100% | 3.12% | |
| Apac | 8 | 12 | 67% | 132 | 120 | 5 | 11 | 2 | 7 | 1 | 0 | 36 | 5.56% | 99% | 22% | 4.17% | |
| Arua | 41 | 42 | 98% | 550 | 538 | 4 | 10 | 3 | 10 | 0 | 0 | 54 | 1.85% | 100% | 75% | 0.74% | |
| Budaka | 7 | 14 | 50% | 85 | 77 | 0 | 4 | 0 | 4 | 0 | 0 | 7 | 0% | 95% | 0% | 0% | |
| Bududa | 6 | 8 | 75% | 79 | 78 | 0 | 1 | 0 | 1 | 0 | 1 | 5 | 20% | 100% | 0% | 0% | |
| Bugiri | 9 | 15 | 60% | 219 | 240 | 1 | 2 | 1 | 2 | 0 | 0 | 38 | 2.63% | 111% | 100% | 0.42% | |
| Buhweju | 6 | 6 | 100% | 38 | 36 | 0 | 1 | 0 | 2 | 1 | 0 | 5 | 0% | 97% | 0% | 0% | |
| Buikwe | 12 | 32 | 38% | 200 | 183 | 3 | 12 | 3 | 12 | 1 | 0 | | | 97% | 100% | 1.64% | |
| Bukedea | 5 | 8 | 62% | 98 | 92 | 0 | 4 | 0 | 4 | 0 | 0 | 14 | 0% | 98% | 0% | 0% | |
| Bukwo | 5 | 5 | 100% | 44 | 51 | 1 | 0 | 1 | 0 | 0 | 0 | | | 116% | 100% | 1.96% | |
| Buliisa | 8 | 8 | 100% | 114 | 101 | 1 | 1 | 1 | 1 | 1 | 0 | 9 | 0% | 89% | 100% | 0.99% | |
| Bundibugyo | 8 | 11 | 73% | 145 | 126 | 0 | 3 | 0 | 3 | 2 | 0 | 4 | 0% | 89% | 0% | 0% | |
| Bunyangabu | 5 | 8 | 62% | 64 | 61 | 0 | 3 | 0 | 3 | 0 | 0 | | | 100% | 0% | 0% | |
| Bushenyi | 13 | 18 | 72% | 164 | 147 | 3 | 14 | 3 | 14 | 0 | 0 | 64 | 1.56% | 98% | 100% | 2.04% | |
| Busia | 9 | 12 | 75% | 179 | 176 | 7 | 2 | 6 | 6 | 0 | 0 | 29 | 0% | 99% | 200% | 3.98% | |
| Butaleja | 12 | 13 | 92% | 199 | 194 | 2 | 2 | 2 | 2 | 0 | 0 | 11 | 9.09% | 98% | 100% | 1.03% | |
| Buvuma | 1 | 10 | 10% | 15 | 14 | 0 | 0 | 0 | 0 | 0 | 0 | 13 | 15.38% | 93% | 0% | 0% | |
| Buyende | 6 | 9 | 67% | 141 | 85 | 1 | 0 | 1 | 0 | 1 | 0 | | | 60% | 100% | 1.18% | |
| Dokolo | 5 | 5 | 100% | 69 | 66 | 4 | 3 | 4 | 3 | 0 | 0 | 18 | 5.56% | 100% | 100% | 6.06% | |
| Gulu | 8 | 14 | 57% | 154 | 143 | 7 | 11 | 7 | 11 | 0 | 0 | 115 | 1.74% | 100% | 100% | 4.9% | |
| Hoima | 24 | 26 | 92% | 528 | 502 | 6 | 25 | 6 | 25 | 1 | 0 | 78 | 3.85% | 100% | 100% | 1.2% | |
| Ibanda | 10 | 10 | 100% | 147 | 139 | 5 | 8 | 4 | 8 | 0 | 0 | 31 | 0% | 100% | 80% | 3.6% | |
| Iganga | 11 | 17 | 65% | 208 | 199 | 0 | 3 | 0 | 3 | 2 | 1 | 47 | 2.13% | 97% | 0% | 0% | |
| Isingiro | 24 | 26 | 92% | 309 | 264 | 4 | 14 | 4 | 15 | 2 | 0 | 56 | 7.14% | 89% | 133% | 1.52% | |

Ministry of Health Option B+ Weekly Report (3.2)

Week ending 2018-08-12 (2018W32)

| District and weekly rate | | | | For Week ending 2018-08-12 (2018W32) | | | | | | | | | EID November 2015 | | Analysis | | |
|--------------------------|----------------------------|-----------------------------|---|--------------------------------------|--|--|--|--|--------------------------------------|---------------------------|----------------------|------------------------------------|---|--|--|--|--|
| Level | No of facilities reporting | No of registered facilities | Proportion of facilities reporting (reporting rate) | a. Total ANC1 visits | b. Total No of mothers tested at 1st ANC visit | c. Total No HIV Tested Positive at 1st ANC visit | d. Total No with known HIV+ status by ANC1 | e. Total initiating Option B+ at 1st ANC visit | f. Total no on ART treatment by ANC1 | h. Has Test Kits stockout | i. Has ARVs stockout | A. Number of EID tests carried out | B. Proportion of EID tests testing positive for HIV | 1. Proportion of ANC1 with unknown status tested | 2. Proportion of HIV+ women not yet on ART initiated | 3. Proportion of women tested positive out of those tested | |
| Jinja | 12 | 23 | 52% | 158 | 149 | 3 | 8 | 3 | 8 | 1 | 0 | 83 | 3.61% | 99% | 100% | 2.01% | |
| Kaabong | 4 | 13 | 31% | 62 | 51 | 0 | 0 | 0 | 0 | 0 | 0 | | | 82% | 0% | 0% | |
| Kabale | 25 | 27 | 93% | 232 | 209 | 1 | 11 | 0 | 10 | 2 | 0 | 53 | 5.66% | 95% | 0% | 0.48% | |
| Kabarole | 19 | 25 | 76% | 163 | 149 | 4 | 12 | 5 | 12 | 0 | 0 | 154 | 3.25% | 99% | 125% | 2.68% | |
| Kaberamaido | 8 | 12 | 67% | 117 | 106 | 0 | 3 | 0 | 3 | 1 | 0 | 19 | 10.53% | 93% | 0% | 0% | |
| Kagadi | 11 | 11 | 100% | 450 | 435 | 2 | 13 | 2 | 13 | 0 | 0 | | | 100% | 100% | 0.46% | |
| Kakumiro | 8 | 8 | 100% | 253 | 239 | 2 | 14 | 2 | 14 | 0 | 0 | | | 100% | 0% | 0.84% | |
| Kalangala | 3 | 15 | 20% | 19 | 22 | 1 | 0 | 1 | 0 | 0 | 0 | 32 | 0% | 116% | 100% | 4.55% | |
| Kaliro | 5 | 6 | 83% | 97 | 96 | 2 | 1 | 2 | 0 | 0 | 0 | 9 | 0% | 100% | 67% | 2.08% | |
| Kalungu | 10 | 16 | 62% | 80 | 68 | 2 | 10 | 1 | 10 | 0 | 0 | 49 | 0% | 97% | 50% | 2.94% | |
| Kampala | 24 | 40 | 60% | 1931 | 1821 | 49 | 98 | 48 | 97 | 1 | 0 | 734 | 2.72% | 99% | 96% | 2.69% | |
| Kamuli | 17 | 17 | 100% | 378 | 348 | 6 | 13 | 7 | 12 | 0 | 0 | 29 | 0% | 95% | 100% | 1.72% | |
| Kamwenge | 13 | 15 | 87% | 176 | 171 | 3 | 9 | 3 | 8 | 1 | 0 | 58 | 3.45% | 102% | 75% | 1.75% | |
| Kanungu | 15 | 17 | 88% | 176 | 152 | 2 | 6 | 2 | 6 | 0 | 0 | 23 | 8.7% | 89% | 100% | 1.32% | |
| Kasese | 32 | 40 | 80% | 425 | 397 | 5 | 11 | 7 | 10 | 0 | 0 | 45 | 6.67% | 96% | 117% | 1.26% | |
| Katakwi | 9 | 12 | 75% | 97 | 91 | 1 | 2 | 1 | 2 | 1 | 0 | | | 96% | 100% | 1.1% | |
| Kayunga | 3 | 11 | 27% | 126 | 121 | 4 | 5 | 4 | 5 | 0 | 0 | 26 | 0% | 100% | 100% | 3.31% | |
| Kibaale | 6 | 6 | 100% | 131 | 125 | 2 | 6 | 2 | 6 | 0 | 0 | 59 | 5.08% | 100% | 100% | 1.6% | |
| Kiboga | 7 | 8 | 88% | 110 | 103 | 7 | 7 | 5 | 7 | 0 | 0 | 21 | 4.76% | 100% | 83% | 6.8% | |
| Kibuku | 11 | 11 | 100% | 179 | 170 | 1 | 2 | 1 | 1 | 2 | 2 | 3 | 0% | 96% | 50% | 0.59% | |
| Kiruhura | 18 | 21 | 86% | 203 | 187 | 8 | 13 | 6 | 13 | 1 | 0 | 51 | 3.92% | 98% | 75% | 4.28% | |
| Kiryandongo | 11 | 11 | 100% | 245 | 241 | 5 | 6 | 5 | 4 | 0 | 0 | 24 | 4.17% | 101% | 71% | 2.07% | |
| Kisoro | 18 | 20 | 90% | 227 | 212 | 4 | 3 | 3 | 3 | 5 | 0 | 26 | 0% | 95% | 75% | 1.89% | |
| Kitgum | 7 | 12 | 58% | 59 | 55 | 1 | 4 | 1 | 4 | 0 | 0 | 59 | 0% | 100% | 100% | 1.82% | |
| Koboko | 8 | 8 | 100% | 143 | 142 | 1 | 1 | 1 | 1 | 0 | 0 | 13 | 0% | 100% | 0% | 0.7% | |
| Kole | 3 | 5 | 60% | 52 | 51 | 0 | 1 | 0 | 1 | 0 | 0 | 13 | 0% | 100% | 0% | 0% | |
| Kotido | 7 | 16 | 44% | 90 | 90 | 0 | 0 | 0 | 0 | 0 | 0 | 4 | 0% | 100% | 0% | 0% | |
| Kumi | 6 | 9 | 67% | 99 | 90 | 0 | 5 | 1 | 4 | 0 | 0 | 19 | 5.26% | 96% | 100% | 0% | |
| Kyankwanzi | 9 | 12 | 75% | 183 | 180 | 2 | 3 | 1 | 3 | 0 | 0 | 16 | 0% | 100% | 100% | 1.11% | |
| Kyegegwa | 8 | 9 | 89% | 186 | 114 | 3 | 17 | 3 | 17 | 2 | 0 | 41 | 4.88% | 67% | 100% | 2.63% | |
| Kyenjojo | 15 | 18 | 83% | 248 | 216 | 4 | 14 | 4 | 13 | 2 | 0 | 95 | 6.32% | 92% | 80% | 1.85% | |
| Lamwo | 6 | 9 | 67% | 47 | 45 | 2 | 2 | 2 | 2 | 0 | 0 | 25 | 8% | 100% | 100% | 4.44% | |

Ministry of Health Option B+ Weekly Report (3.2)

Week ending 2018-08-12 (2018W32)

| District and weekly rate | | | | For Week ending 2018-08-12 (2018W32) | | | | | | | | | EID November 2015 | | Analysis | | |
|--------------------------|----------------------------|-----------------------------|---|--------------------------------------|--|--|--|--|--------------------------------------|---------------------------|----------------------|------------------------------------|---|--|--|--|--|
| Level | No of facilities reporting | No of registered facilities | Proportion of facilities reporting (reporting rate) | a. Total ANC1 visits | b. Total No of mothers tested at 1st ANC visit | c. Total No HIV Tested Positive at 1st ANC visit | d. Total No with known HIV+ status by ANC1 | e. Total initiating Option B+ at 1st ANC visit | f. Total no on ART treatment by ANC1 | h. Has Test Kits stockout | i. Has ARVs stockout | A. Number of EID tests carried out | B. Proportion of EID tests testing positive for HIV | 1. Proportion of ANC1 with unknown status tested | 2. Proportion of HIV+ women not yet on ART initiated | 3. Proportion of women tested positive out of those tested | |
| Lira | 5 | 19 | 26% | 116 | 168 | 3 | 5 | 3 | 5 | 0 | 0 | 96 | 5.21% | 151% | 100% | 1.79% | |
| Luuka | 5 | 7 | 71% | 67 | 67 | 0 | 2 | 0 | 0 | 0 | 0 | 4 | 0% | 103% | 0% | 0% | |
| Luweero | 25 | 57 | 44% | 334 | 336 | 9 | 23 | 12 | 24 | 2 | 0 | 99 | 2.02% | 108% | 153% | 2.68% | |
| Lwengo | 6 | 13 | 46% | 98 | 91 | 7 | 3 | 6 | 3 | 0 | 0 | 48 | 6.25% | 96% | 86% | 7.69% | |
| Lyantonde | 1 | 2 | 50% | 4 | 3 | 0 | 1 | 0 | 1 | 0 | 0 | 38 | 7.89% | 100% | 0% | 0% | |
| Manafwa | 5 | 12 | 42% | 91 | 91 | 1 | 1 | 1 | 1 | 0 | 0 | 8 | 0% | 101% | 100% | 1.1% | |
| Maracha | 10 | 10 | 100% | 115 | 107 | 0 | 1 | 0 | 1 | 0 | 0 | | | 94% | 0% | 0% | |
| Masaka | 17 | 21 | 81% | 101 | 82 | 8 | 16 | 4 | 16 | 3 | 2 | 97 | 3.09% | 96% | 0% | 9.76% | |
| Masindi | 12 | 14 | 86% | 250 | 239 | 4 | 11 | 4 | 11 | 0 | 0 | | | 100% | 100% | 1.67% | |
| Mayuge | 7 | 14 | 50% | 157 | 136 | 1 | 3 | 1 | 1 | 2 | 0 | 33 | 6.06% | 88% | 33% | 0.74% | |
| Mbale | 19 | 33 | 58% | 256 | 222 | 3 | 6 | 3 | 6 | 3 | 0 | 59 | 1.69% | 89% | 100% | 1.35% | |
| Mbarara | 19 | 45 | 42% | 295 | 251 | 12 | 34 | 15 | 28 | 3 | 0 | 162 | 4.94% | 96% | 94% | 4.78% | |
| Mitooma | 8 | 9 | 89% | 106 | 105 | 3 | 3 | 4 | 2 | 0 | 0 | 10 | 0% | 102% | 100% | 2.86% | |
| Mityana | 25 | 26 | 96% | 280 | 256 | 7 | 18 | 7 | 15 | 1 | 1 | 78 | 6.41% | 98% | 70% | 2.73% | |
| Moroto | 4 | 12 | 33% | 26 | 22 | 0 | 0 | 0 | 0 | 0 | 0 | 5 | 0% | 85% | 0% | 0% | |
| Moyo | 14 | 14 | 100% | 67 | 67 | 1 | 0 | 1 | 0 | 0 | 0 | 6 | 0% | 100% | 100% | 1.49% | |
| Mpigi | 1 | 2 | 50% | 9 | 7 | 0 | 1 | 0 | 1 | 0 | 0 | 67 | 2.99% | 88% | 0% | 0% | |
| Mubende | 13 | 23 | 57% | 334 | 310 | 12 | 28 | 11 | 27 | 0 | 0 | 138 | 0% | 101% | 85% | 3.87% | |
| Mukono | 6 | 22 | 27% | 81 | 71 | 2 | 9 | 2 | 9 | 0 | 0 | | | 99% | 100% | 2.82% | |
| Nakapiripirit | 9 | 14 | 64% | 86 | 85 | 0 | 1 | 0 | 0 | 0 | 0 | 4 | 0% | 100% | 0% | 0% | |
| Nakaseke | 11 | 15 | 73% | 178 | 165 | 4 | 12 | 4 | 12 | 0 | 0 | 33 | 3.03% | 99% | 100% | 2.42% | |
| Nakasongola | 11 | 24 | 46% | 132 | 127 | 3 | 8 | 3 | 8 | 0 | 0 | 22 | 4.55% | 102% | 100% | 2.36% | |
| Namayingo | 7 | 20 | 35% | 82 | 66 | 2 | 5 | 2 | 6 | 3 | 1 | 26 | 3.85% | 86% | 100% | 3.03% | |
| Namisindwa | 5 | 18 | 28% | 70 | 70 | 0 | 0 | 0 | 0 | 1 | 2 | | | 100% | 0% | 0% | |
| Namutumba | 5 | 7 | 71% | 125 | 122 | 2 | 2 | 2 | 2 | 0 | 0 | | | 99% | 100% | 1.64% | |
| Napak | 4 | 8 | 50% | 77 | 77 | 0 | 0 | 0 | 0 | 0 | 0 | 6 | 0% | 100% | 0% | 0% | |
| Nebbi | 12 | 12 | 100% | 220 | 217 | 1 | 7 | 0 | 5 | 0 | 0 | 40 | 2.5% | 102% | 0% | 0.46% | |
| Ngora | 6 | 8 | 75% | 102 | 109 | 1 | 3 | 1 | 3 | 0 | 0 | 12 | 0% | 110% | 100% | 0.92% | |
| Ntoroko | 2 | 4 | 50% | 19 | 19 | 0 | 0 | 0 | 0 | 0 | 0 | 5 | 0% | 100% | 0% | 0% | |
| Ntungamo | 15 | 17 | 88% | 269 | 240 | 4 | 17 | 4 | 19 | 1 | 1 | 39 | 2.56% | 95% | 200% | 1.67% | |
| Nwoya | 3 | 7 | 43% | 44 | 44 | 3 | 0 | 3 | 0 | 0 | 0 | 25 | 0% | 100% | 100% | 6.82% | |
| Omoro | 1 | 6 | 17% | 1 | 1 | 0 | 0 | 0 | 0 | 0 | 0 | | | 100% | 0% | 0% | |

Ministry of Health Option B+ Weekly Report (3.2)

Week ending 2018-08-12 (2018W32)

| District and weekly rate | | | | For Week ending 2018-08-12 (2018W32) | | | | | | | | | EID November 2015 | | Analysis | | |
|--------------------------|----------------------------|-----------------------------|---|--------------------------------------|--|--|--|--|--------------------------------------|---------------------------|----------------------|------------------------------------|---|--|--|--|--|
| Level | No of facilities reporting | No of registered facilities | Proportion of facilities reporting (reporting rate) | a. Total ANC1 visits | b. Total No of mothers tested at 1st ANC visit | c. Total No HIV Tested Positive at 1st ANC visit | d. Total No with known HIV+ status by ANC1 | e. Total initiating Option B+ at 1st ANC visit | f. Total no on ART treatment by ANC1 | h. Has Test Kits stockout | i. Has ARVs stockout | A. Number of EID tests carried out | B. Proportion of EID tests testing positive for HIV | 1. Proportion of ANC1 with unknown status tested | 2. Proportion of HIV+ women not yet on ART initiated | 3. Proportion of women tested positive out of those tested | |
| Otuke | 6 | 7 | 86% | 71 | 79 | 2 | 6 | 2 | 6 | 0 | 0 | 10 | 0% | 122% | 100% | 2.53% | |
| Oyam | 2 | 7 | 29% | 60 | 58 | 3 | 2 | 3 | 4 | 0 | 0 | 40 | 0% | 100% | 300% | 5.17% | |
| Pader | 5 | 11 | 45% | 53 | 47 | 1 | 6 | 1 | 6 | 0 | 0 | 50 | 4% | 100% | 100% | 2.13% | |
| Pakwach | 9 | 9 | 100% | 111 | 107 | 0 | 4 | 0 | 4 | 0 | 0 | | | 100% | 0% | 0% | |
| Pallisa | 19 | 19 | 100% | 347 | 333 | 0 | 1 | 0 | 0 | 0 | 0 | 12 | 0% | 96% | 0% | 0% | |
| Rakai | 9 | 15 | 60% | 83 | 66 | 1 | 4 | 1 | 6 | 1 | 0 | 155 | 3.23% | 84% | 100% | 1.52% | |
| Rubirizi | 6 | 8 | 75% | 51 | 39 | 1 | 6 | 0 | 6 | 2 | 0 | 16 | 0% | 87% | 0% | 2.56% | |
| Rukungiri | 17 | 20 | 85% | 223 | 202 | 8 | 19 | 9 | 19 | 0 | 2 | 61 | 1.64% | 99% | 100% | 3.96% | |
| Serere | 9 | 14 | 64% | 151 | 146 | 1 | 5 | 1 | 5 | 0 | 0 | 38 | 7.89% | 100% | 100% | 0.68% | |
| Sheema | 7 | 9 | 78% | 122 | 111 | 3 | 9 | 5 | 9 | 0 | 0 | 51 | 1.96% | 98% | 167% | 2.7% | |
| Sironko | 13 | 16 | 81% | 184 | 182 | 3 | 2 | 1 | 2 | 0 | 0 | 10 | 0% | 100% | 33% | 1.65% | |
| Soroti | 15 | 21 | 71% | 231 | 225 | 1 | 5 | 1 | 6 | 0 | 0 | 42 | 4.76% | 100% | 0% | 0.44% | |
| Tororo | 20 | 49 | 41% | 324 | 288 | 4 | 4 | 2 | 3 | 0 | 0 | 59 | 1.69% | 90% | 67% | 1.39% | |
| Wakiso | 56 | 81 | 69% | 1203 | 1122 | 49 | 79 | 47 | 77 | 3 | 0 | 252 | 4.37% | 100% | 93% | 4.37% | |
| Yumbe | 13 | 13 | 100% | 281 | 270 | 0 | 1 | 0 | 1 | 0 | 0 | 13 | 7.69% | 96% | 0% | 0% | |
| Zombo | 8 | 11 | 73% | 135 | 132 | 2 | 3 | 2 | 3 | 0 | 0 | 23 | 4.35% | 100% | 100% | 1.52% | |

EID data provided by CPHL up to 2015-12-10 cumulative for the entire month of November 2015

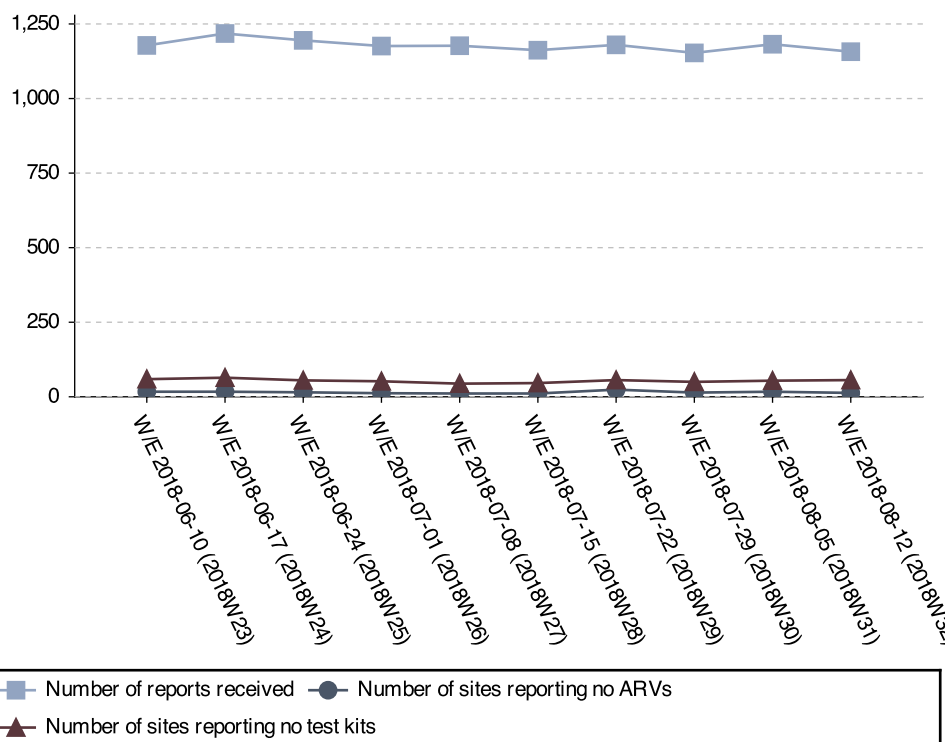
Ministry of Health Option B+ Weekly Report (3.2)

Week ending 2018-08-12 (2018W32)

Stock-outs for the last 6 weeks per facility level

| | 2018W32 | | 2018W31 | | 2018W30 | | 2018W29 | | 2018W28 | | 2018W27 | |
|------------------|-----------|---------------|-----------|---------------|-----------|---------------|-----------|---------------|-----------|---------------|-----------|---------------|
| | ARVs | HIV Test kits | ARVs | HIV Test kits | ARVs | HIV Test kits | ARVs | HIV Test kits | ARVs | HIV Test kits | ARVs | HIV Test kits |
| Clinic | 0 | 0 | 0 | 0 | 0 | 0 | 0 | 0 | 0 | 0 | 0 | 0 |
| General Hospital | 2 | 0 | 3 | 1 | 0 | 1 | 1 | 0 | 1 | 1 | 0 | 1 |
| HC II | 0 | 26 | 1 | 22 | 0 | 17 | 3 | 23 | 1 | 20 | 1 | 13 |
| HC III | 11 | 37 | 13 | 33 | 14 | 36 | 20 | 37 | 9 | 28 | 9 | 35 |
| HC IV | 0 | 0 | 0 | 1 | 0 | 1 | 0 | 3 | 0 | 1 | 0 | 0 |
| NR Hospital | 0 | 0 | 0 | 0 | 0 | 0 | 0 | 0 | 0 | 0 | 0 | 0 |
| Other/unknown | 0 | 0 | 0 | 1 | 0 | 0 | 0 | 0 | 0 | 0 | 0 | 0 |
| RR Hospital | 0 | 0 | 0 | 0 | 0 | 2 | 0 | 0 | 0 | 0 | 0 | 0 |
| Total | 13 | 63 | 17 | 58 | 14 | 57 | 24 | 63 | 11 | 50 | 10 | 49 |

Stock-out trends for the last 10 weeks



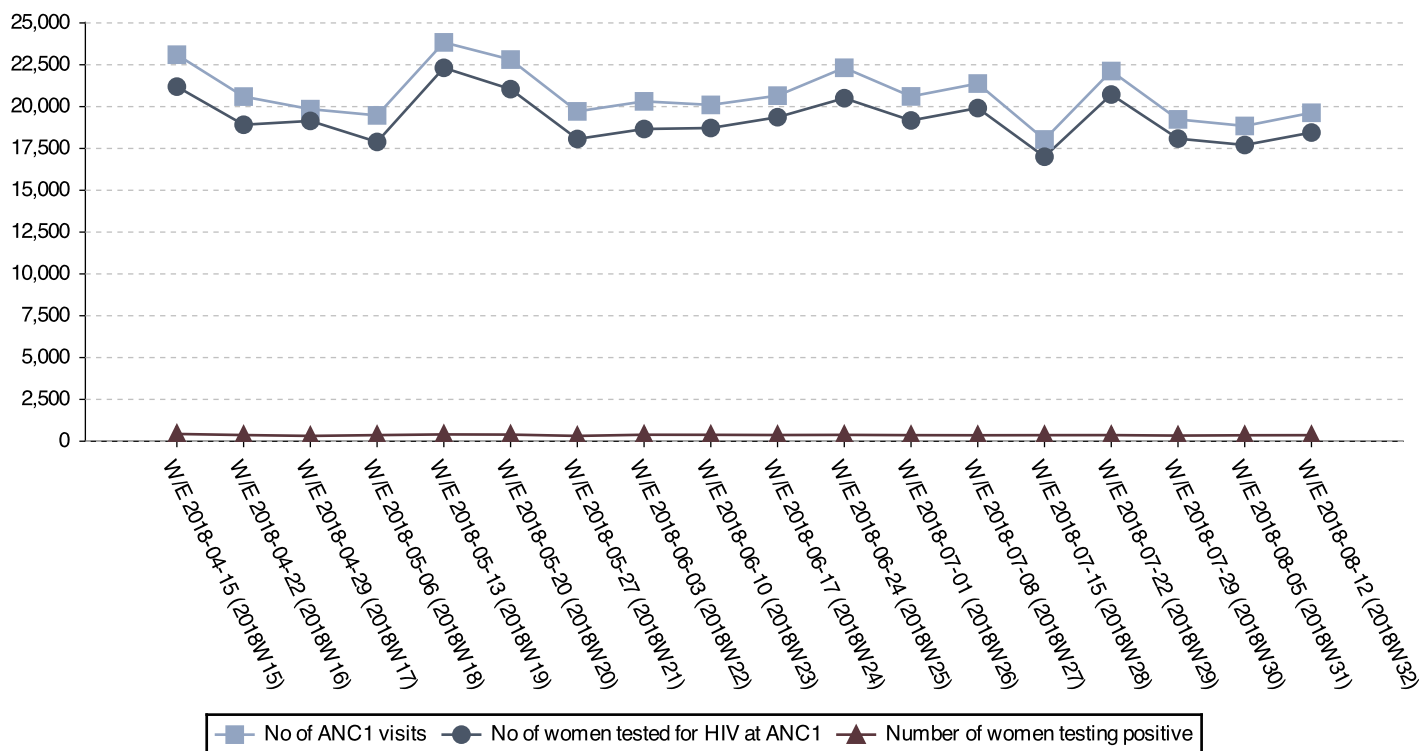
Current stock-outs per IP

| IP | Test kit stockout | ARV stockout |
|--------------|-------------------|--------------|
| RHITES-SW | 17 | 1 |
| RHITES-EC | 8 | 2 |
| Baylor | 7 | 0 |
| RHITES-E | 6 | 5 |
| PREFA | 6 | 2 |
| Mildmay | 4 | 1 |
| MJAP | 3 | 0 |
| RTI | 2 | 0 |
| TASO Teso | 2 | 0 |
| IDI | 2 | 0 |
| Walter Reed | 1 | 0 |
| RHSP | 1 | 0 |
| TASO | 1 | 2 |
| USAID ASSIST | 1 | 0 |
| USAID PHS | 1 | 2 |
| IRCU | 0 | 2 |
| Total | 62 | 17 |

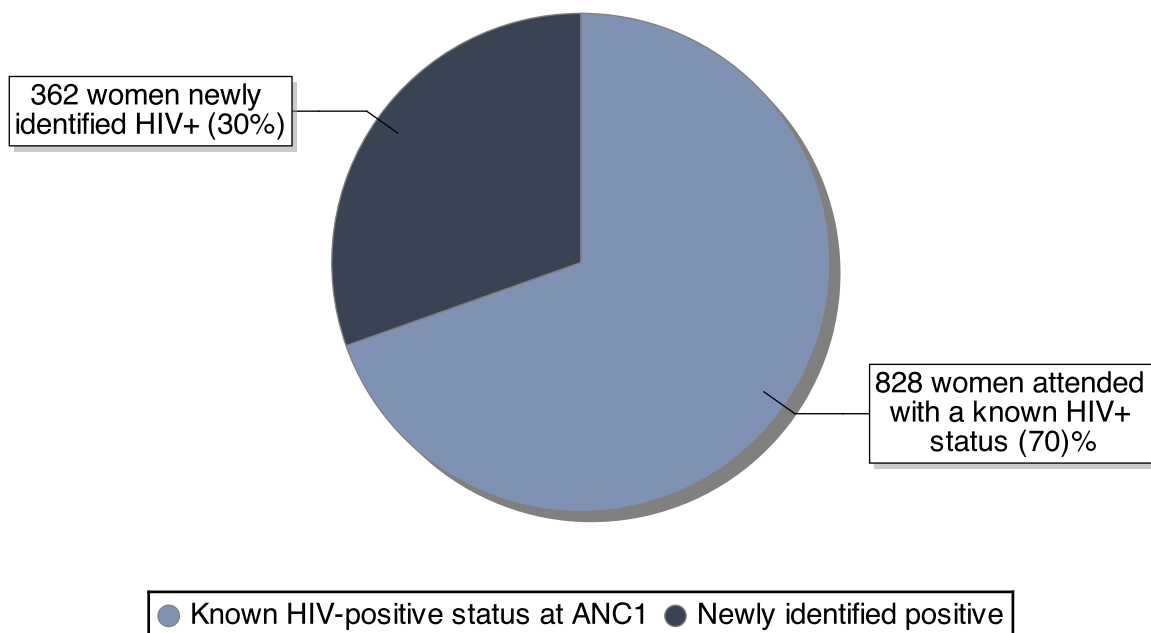
Ministry of Health Option B+ Weekly Report (3.2)

Week ending 2018-08-12 (2018W32)

ANC trends for the last 18 weeks



Break down of existing vs. newly identified infections



Ratio newly identified / already known status: 0.44

Ministry of Health Option B+ Weekly Report (3.2)

Week ending 2018-08-12 (2018W32)

District Service Delivery Focus

High HIV+ EID Testing

This section shows 20 districts with high proportions of HIV+ 1st PCR EID tests. Please consider both the actual number and the proportion.

| District | # EID Tests | # Positive | % Positive |
|-------------|-------------|------------|------------|
| Amudat | 3 | 1 | 33.33 |
| Bududa | 5 | 1 | 20.00 |
| Buvuma | 13 | 2 | 15.38 |
| Abim | 7 | 1 | 14.29 |
| Amolatar | 18 | 2 | 11.11 |
| Kaberamaido | 19 | 2 | 10.53 |
| Agago | 33 | 3 | 9.09 |
| Butaleja | 11 | 1 | 9.09 |
| Adjumani | 11 | 1 | 9.09 |
| Kanungu | 23 | 2 | 8.70 |
| Alebtong | 23 | 2 | 8.70 |
| Lamwo | 25 | 2 | 8.00 |
| Lyantonde | 38 | 3 | 7.89 |
| Serere | 38 | 3 | 7.89 |
| Yumbe | 13 | 1 | 7.69 |
| Isingiro | 56 | 4 | 7.14 |
| Kasese | 45 | 3 | 6.67 |
| Mityana | 78 | 5 | 6.41 |
| Kyenjojo | 95 | 6 | 6.32 |
| Lwengo | 48 | 3 | 6.25 |
| Mayuge | 33 | 2 | 6.06 |
| Kabale | 53 | 3 | 5.66 |
| Dokolo | 18 | 1 | 5.56 |
| Apac | 36 | 2 | 5.56 |
| Kumi | 19 | 1 | 5.26 |

Low initiation on ART

This section shows 15 districts with low ART initiation rates. Please consider the actual ART need in addition to the proportion.

| District | ART Need | # Initiated | % Initiated |
|-----------------|----------|-------------|-------------|
| Masaka | 8 | 4 | 0 |
| Kabale | 2 | 0 | 0 |
| Kakumiro | 2 | 2 | 0 |
| Rubirizi | 1 | 0 | 0 |
| Pallisa | 1 | 0 | 0 |
| Nebbi District | 3 | 0 | 0 |
| Nakapiripirit | 1 | 0 | 0 |
| Koboko | 1 | 1 | 0 |
| Luuka District | 2 | 0 | 0 |
| Apac District | 9 | 2 | 22 |
| Mayuge | 3 | 1 | 33 |
| Sironko | 3 | 1 | 33 |
| Kalungu | 2 | 1 | 50 |
| Kibuku | 2 | 1 | 50 |
| Kaliro District | 3 | 2 | 67 |

Data Quality challenges by IP

'Overtesting'

IPs listed here have 'overtested' – which means that there are issues with data quality. Ensure that facilities have the latest version of the job aide, and that health workers understand that most indicators pertain to ANC1 visits only.

| IP | # ANC1 Visits | # Tested | % Tested |
|-----------|---------------|----------|----------|
| Reach Out | 7 | 6 | 150 |
| RTI | 76 | 81 | 123 |
| Kalangala | 19 | 22 | 116 |
| USAID | 1093 | 1110 | 106 |
| TASO Teso | 984 | 978 | 102 |
| UCMB | 519 | 493 | 101 |

'Overinitiating'

IPs listed here have 'overinitiated' – which means that there are issues with data quality. Ensure that facilities have the latest version of the job aide, and that health workers understand that most indicators pertain to ANC1 visits only.

| IP | ART Need | # Initiated | % Initiated |
|-----------|----------|-------------|-------------|
| TASO Teso | 3 | 4 | 133 |

None of the proportions mentioned above should exceed 100%, as all proportions relate to ANC1 visits only. They take both women with a known positive status and women already on ART into consideration. Please see <http://reports.dhis2sms.ug> for further details, including detailed facility data.