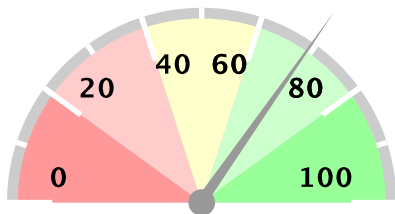


Ministry of Health Option B+ Weekly Report (3.2)

Week ending 2018-08-05 (2018W31)

Summary

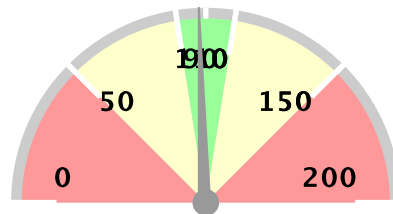
Weekly reporting rate



70%

1186 reports received out of 1705 registered facilities

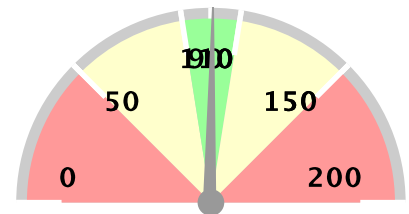
% of ANC1 attendees tested for HIV



98%

18868 ANC1 visits

% of women initiated on Option B+



101%

346 initiated on ART

Stockouts and missed appointments

Facilities without ARVs	17	1%
Facilities without test kits	54	5%
Number missed appointments	994	

1st PCR EID testing for August 2015*

Number of EID tests	4936
Number of positive EID tests	169
Proportion testing positive	3.42%

The week in numbers

Number of reports received this week 1186

Number of facilities registered for B+ 1705

Testing coverage for this week

Number of ANC 1 visits	18868
No. tested for HIV at ANC 1	94% 17729
No. HIV+ women identified at ANC 1	1170
Newly identified thru testing	31% 357
With a known status	69% 813
Proportion newly tested +ve at ANC 1	2.01%
Proportion of +ve women at ANC 1	6.20%

ART coverage for this week

Total HIV + Women at ANC 1	1170
Total already on ART	72% 844
Total to be initiated	70% 824
Total no of women initiated on ART	346
Proportion of women initiated on ART	238%
Proportion with known status already on ART	103.81%

This proportion shows how many women who have a known positive status are already on ART

The data as presented in this report using data from MoH/EOC Weekly Reporting and CPHL. PMTCT service delivery data is weekly data, EID testing data is cumulative monthly. EID number includes data up 2013-09-01. Starting from June 2014, EID data contains only 1st PCR tests.

Ministry of Health Option B+ Weekly Report (3.2)

Week ending 2018-08-05 (2018W31)

Overall performance per IP

Note: IP data does not add up to national totals due to the fact that IPs overlap in districts. EID data is aggregate for all districts in which an IP operates, and not based on individual facilities supported by an IP.

District and weekly rate				For Week ending 2018-08-05 (2018W31)									EID November 2015		Analysis		
Level	No of facilities reporting	No of registered facilities	Proportion of facilities reporting (reporting rate)	a. Total ANC1 visits	b. Total No of mothers tested at 1st ANC visit	c. Total No HIV Tested Positive at 1st ANC visit	d. Total No with known HIV+ status by ANC1	e. Total initiating Option B+ at 1st ANC visit	f. Total no on ART treatment by ANC1	h. Has Test Kits stockout	i. Has ARVs stockout	A. Number of EID tests carried out	B. Proportion of EID tests testing positive for HIV	1. Proportion of ANC1 with unknown status tested	2. Proportion of HIV+ women not yet on ART initiated	3. Proportion of women tested positive out of those tested	
Uganda	1182	1704	69%	18844	17705	356	813	346	844	54	17	4936	3.42%	98%	101%	2.01%	
Baylor	102	120	85%	1473	1352	26	47	31	45	8	0	402	4.48%	95%	117%	1.92%	
CAF	4	6	67%	24	15	4	9	4	9	0	0	1133	3.09%	100%	100%	26.67%	
CUAMM	34	63	54%	379	359	0	3	0	2	0	0	29	6.9%	95%	0%	0%	
HIWA	8	9	89%	56	50	0	0	1	0	0	0	1281	2.65%	89%	0%	0%	
IDI-KCC	7	7	100%	978	916	34	60	34	60	0	0	734	2.72%	100%	100%	3.71%	
IDI	199	199	100%	3272	3152	33	78	37	75	3	0	330	3.64%	99%	83%	1.05%	
IRCU	12	15	80%	317	318	10	10	10	10	0	2	1457	3.09%	104%	100%	3.14%	
Kalangala	3	15	20%	8	6	0	2	0	2	0	0	32	0%	100%	0%	0%	
Mildmay	139	155	90%	2244	2066	67	149	68	151	2	1	659	3.19%	99%	102%	3.24%	
MJAP	18	22	82%	619	503	10	35	10	35	1	0	896	3.12%	86%	100%	1.99%	
MRC-UVRI	1	1	100%	1	1	0	0	0	0	0	0	734	2.72%	100%	0%	0%	
PREFA	82	106	77%	949	878	31	51	29	51	7	3	567	3.53%	98%	88%	3.53%	
Reach Out	5	7	71%	9	3	1	6	3	6	0	0	1085	3.04%	100%	500%	33.33%	
RHITES-EC	82	121	68%	1756	1622	25	38	20	39	8	1	279	2.15%	94%	81%	1.54%	
RHITES-E	119	161	74%	1650	1607	22	30	14	25	6	6	183	2.19%	99%	47%	1.37%	
RHITES-SW	187	215	87%	2091	1805	32	119	32	152	16	3	648	3.55%	92%	740%	1.77%	
RHSP	10	15	67%	81	58	4	12	2	11	1	0	155	3.23%	84%	50%	6.9%	
RHU	0	1	0%									64	1.56%	null%	null%		
RTI	10	19	53%	74	76	3	5	1	5	0	0	2002	3.05%	110%	33%	3.95%	
SUSTAIN	10	12	83%	486	453	10	35	11	34	0	0	723	2.77%	100%	100%	2.21%	
TASO	50	65	77%	713	671	22	26	12	25	1	2	1672	3.11%	98%	46%	3.28%	
TASO Teso	67	93	72%	937	955	11	33	11	35	1	0	170	4.71%	106%	122%	1.15%	
UCMB	16	18	89%	591	560	15	37	15	37	0	0	1907	2.83%	101%	100%	2.68%	
UHMG	4	18	22%	15	14	1	1	1	1	0	0	1232	3.17%	100%	0%	7.14%	
UPMB	6	13	46%	71	65	2	5	2	5	0	0	1399	3.5%	98%	100%	3.08%	
USAID ASSIST	75	125	60%	1021	1046	21	55	18	62	1	0	569	3.69%	108%	129%	2.01%	
USAID PHS	26	39	67%	404	397	11	20	10	20	1	2	2064	3.29%	103%	95%	2.77%	

Ministry of Health Option B+ Weekly Report (3.2)

Week ending 2018-08-05 (2018W31)

District and weekly rate			For Week ending 2018-08-05 (2018W31)									EID November 2015		Analysis		
Level	No of facilities reporting	No of registered facilities	Proportion of facilities reporting (reporting rate)	a. Total ANC1 visits	b. Total No of mothers tested at 1st ANC visit	c. Total No HIV Tested Positive at 1st ANC visit	d. Total No with known HIV+ status by ANC1	e. Total initiating Option B+ at 1st ANC visit	f. Total no on ART treatment by ANC1	h. Has Test Kits stockout	i. Has ARVs stockout	A. Number of EID tests carried out	B. Proportion of EID tests testing positive for HIV	1. Proportion of ANC1 with unknown status tested	2. Proportion of HIV+ women not yet on ART initiated	3. Proportion of women tested positive out of those tested
Walter Reed	22	64	34%	487	473	16	21	15	20	2	1	39	5.13%	102%	88%	3.38%

EID data provided by CPHL up to 2015-12-10 cumulative for the entire month of November 2015

Overall performance per district

Note:

Ministry of Health Option B+ Weekly Report (3.2)

Week ending 2018-08-05 (2018W31)

District and weekly rate				For Week ending 2018-08-05 (2018W31)									EID November 2015		Analysis		
Level	No of facilities reporting	No of registered facilities	Proportion of facilities reporting (reporting rate)	a. Total ANC1 visits	b. Total No of mothers tested at 1st ANC visit	c. Total No HIV Tested Positive at 1st ANC visit	d. Total No with known HIV+ status by ANC1	e. Total initiating Option B+ at 1st ANC visit	f. Total no on ART treatment by ANC1	h. Has Test Kits stockout	i. Has ARVs stockout	A. Number of EID tests carried out	B. Proportion of EID tests testing positive for HIV	1. Proportion of ANC1 with unknown status tested	2. Proportion of HIV+ women not yet on ART initiated	3. Proportion of women tested positive out of those tested	
Uganda	1182	1704	69%	18844	17705	356	813	346	844	54	17	4936	3.42%	98%	101%	2.01%	
Abim	5	8	62%	40	39	0	1	0	1	0	0	7	14.29%	100%	0%	0%	
Adjumani	12	12	100%	99	108	1	2	1	2	0	0	11	9.09%	111%	100%	0.93%	
Agago	6	9	67%	97	90	5	14	5	14	0	0	33	9.09%	108%	100%	5.56%	
Alebtong	7	7	100%	125	118	1	2	2	3	0	0	23	8.7%	96%	0%	0.85%	
Amolatar	4	5	80%	39	68	4	5	4	5	0	0	18	11.11%	200%	100%	5.88%	
Amudat	2	4	50%	33	33	0	0	0	0	0	0	3	33.33%	100%	0%	0%	
Amuria	11	14	79%	175	187	1	3	1	4	0	0	26	0%	109%	0%	0.53%	
Amuru	1	8	12%	6	6	0	0	0	0	0	0	8	0%	100%	0%	0%	
Apac	9	12	75%	151	144	0	11	0	8	0	0	36	5.56%	103%	0%	0%	
Arua	41	42	98%	565	561	3	5	7	3	1	0	54	1.85%	100%	50%	0.53%	
Budaka	7	14	50%	98	95	0	2	0	2	1	0	7	0%	99%	0%	0%	
Bududa	7	8	88%	63	62	0	3	0	2	0	1	5	20%	103%	0%	0%	
Bugiri	9	15	60%	197	194	3	3	3	3	0	0	38	2.63%	100%	100%	1.55%	
Buhweju	6	6	100%	51	49	1	0	1	1	1	0	5	0%	96%	100%	2.04%	
Buikwe	13	32	41%	179	170	7	8	6	7	1	0			99%	75%	4.12%	
Bukedea	5	8	62%	114	117	1	5	1	5	0	0	14	0%	107%	100%	0.85%	
Bukwo	5	5	100%	53	55	0	0	0	0	0	0			104%	0%	0%	
Buliisa	8	8	100%	113	111	1	2	1	2	0	0	9	0%	100%	100%	0.9%	
Bundibugyo	9	11	82%	129	116	1	2	1	2	1	0	4	0%	91%	100%	0.86%	
Bunyangabu	5	8	62%	49	47	2	2	2	2	0	0			100%	100%	4.26%	
Bushenyi	14	18	78%	149	129	3	13	3	13	0	0	64	1.56%	95%	100%	2.33%	
Busia	8	12	67%	164	161	4	3	1	5	0	0	29	0%	100%	50%	2.48%	
Butaleja	10	13	77%	131	121	0	0	0	0	1	0	11	9.09%	92%	0%	0%	
Buvuma	3	10	30%	38	41	0	1	0	1	1	1	13	15.38%	111%	0%	0%	
Buyende	7	9	78%	189	155	5	3	5	4	1	0			83%	100%	3.23%	
Dokolo	5	5	100%	78	75	1	2	1	3	0	0	18	5.56%	99%	0%	1.33%	
Gulu	8	14	57%	161	154	1	8	1	12	0	0	115	1.74%	101%	-33%	0.65%	
Hoima	24	26	92%	459	430	8	25	8	25	0	0	78	3.85%	99%	75%	1.86%	
Ibanda	10	10	100%	155	144	5	9	4	10	0	0	31	0%	99%	100%	3.47%	
Iganga	12	17	71%	215	196	2	4	2	4	1	0	47	2.13%	93%	100%	1.02%	
Isingiro	26	26	100%	305	263	3	18	3	18	4	1	56	7.14%	92%	100%	1.14%	

Ministry of Health Option B+ Weekly Report (3.2)

Week ending 2018-08-05 (2018W31)

District and weekly rate				For Week ending 2018-08-05 (2018W31)									EID November 2015		Analysis		
Level	No of facilities reporting	No of registered facilities	Proportion of facilities reporting (reporting rate)	a. Total ANC1 visits	b. Total No of mothers tested at 1st ANC visit	c. Total No HIV Tested Positive at 1st ANC visit	d. Total No with known HIV+ status by ANC1	e. Total initiating Option B+ at 1st ANC visit	f. Total no on ART treatment by ANC1	h. Has Test Kits stockout	i. Has ARVs stockout	A. Number of EID tests carried out	B. Proportion of EID tests testing positive for HIV	1. Proportion of ANC1 with unknown status tested	2. Proportion of HIV+ women not yet on ART initiated	3. Proportion of women tested positive out of those tested	
Jinja	14	23	61%	197	186	6	8	6	8	0	0	83	3.61%	98%	100%	3.23%	
Kaabong	5	13	38%	58	41	0	0	0	0	0	0			71%	0%	0%	
Kabale	26	27	96%	171	164	3	6	3	6	2	0	53	5.66%	99%	100%	1.83%	
Kabarole	20	25	80%	169	154	5	15	8	16	2	0	154	3.25%	100%	200%	3.25%	
Kaberamaido	9	12	75%	153	145	1	5	1	6	0	0	19	10.53%	98%	0%	0.69%	
Kagadi	11	11	100%	320	302	5	16	5	16	0	0			99%	100%	1.66%	
Kakumiro	8	8	100%	253	242	6	11	6	11	0	0			100%	100%	2.48%	
Kalangala	3	15	20%	8	6	0	2	0	2	0	0	32	0%	100%	0%	0%	
Kaliro	6	6	100%	199	167	1	6	0	6	0	0	9	0%	87%	0%	0.6%	
Kalungu	11	16	69%	96	82	3	6	3	6	0	0	49	0%	91%	100%	3.66%	
Kampala	27	40	68%	1716	1616	49	94	48	94	1	0	734	2.72%	100%	98%	3.03%	
Kamuli	16	17	94%	349	325	4	11	3	9	1	0	29	0%	96%	75%	1.23%	
Kamwenge	12	15	80%	202	201	0	5	0	4	1	0	58	3.45%	102%	0%	0%	
Kanungu	14	17	82%	144	135	2	5	2	34	0	1	23	8.7%	97%	-7%	1.48%	
Kasese	33	40	82%	403	398	3	5	3	5	0	0	45	6.67%	100%	100%	0.75%	
Katakwi	7	12	58%	72	67	2	5	2	5	0	0			100%	100%	2.99%	
Kayunga	3	11	27%	82	79	2	2	2	2	0	0	26	0%	99%	100%	2.53%	
Kibaale	6	6	100%	138	138	3	0	3	0	0	0	59	5.08%	100%	100%	2.17%	
Kiboga	8	8	100%	124	107	5	16	4	12	0	0	21	4.76%	99%	44%	4.67%	
Kibuku	11	11	100%	147	142	0	4	2	2	1	2	3	0%	99%	100%	0%	
Kiruhura	16	21	76%	147	124	4	10	4	12	1	0	51	3.92%	91%	200%	3.23%	
Kiryandongo	11	11	100%	223	167	2	9	2	9	1	0	24	4.17%	78%	100%	1.2%	
Kisoro	16	20	80%	190	162	0	2	1	2	3	0	26	0%	86%	0%	0%	
Kitgum	6	12	50%	63	56	5	3	1	7	0	0	59	0%	93%	100%	8.93%	
Koboko	8	8	100%	148	145	2	3	2	3	0	0	13	0%	100%	100%	1.38%	
Kole	4	5	80%	61	57	2	4	2	4	0	0	13	0%	100%	100%	3.51%	
Kotido	6	16	38%	113	112	0	1	0	1	0	0	4	0%	100%	0%	0%	
Kumi	6	9	67%	80	97	1	2	1	2	0	0	19	5.26%	124%	100%	1.03%	
Kyankwanzi	9	12	75%	157	151	5	6	5	6	0	0	16	0%	100%	100%	3.31%	
Kyegegwa	9	9	100%	219	162	8	9	8	7	2	0	41	4.88%	77%	83%	4.94%	
Kyenjojo	17	18	94%	306	274	10	13	12	13	2	0	95	6.32%	94%	120%	3.65%	
Lamwo	7	9	78%	69	67	1	2	1	2	0	0	25	8%	100%	100%	1.49%	

Ministry of Health Option B+ Weekly Report (3.2)

Week ending 2018-08-05 (2018W31)

District and weekly rate				For Week ending 2018-08-05 (2018W31)									EID November 2015		Analysis		
Level	No of facilities reporting	No of registered facilities	Proportion of facilities reporting (reporting rate)	a. Total ANC1 visits	b. Total No of mothers tested at 1st ANC visit	c. Total No HIV Tested Positive at 1st ANC visit	d. Total No with known HIV+ status by ANC1	e. Total initiating Option B+ at 1st ANC visit	f. Total no on ART treatment by ANC1	h. Has Test Kits stockout	i. Has ARVs stockout	A. Number of EID tests carried out	B. Proportion of EID tests testing positive for HIV	1. Proportion of ANC1 with unknown status tested	2. Proportion of HIV+ women not yet on ART initiated	3. Proportion of women tested positive out of those tested	
Lira	8	19	42%	128	170	1	10	1	10	1	0	96	5.21%	144%	100%	0.59%	
Luuka	6	7	86%	64	64	1	0	1	0	0	0	4	0%	100%	100%	1.56%	
Luweero	27	57	47%	342	334	12	12	13	12	2	0	99	2.02%	101%	109%	3.59%	
Lwengo	6	13	46%	96	79	2	7	2	7	1	1	48	6.25%	89%	100%	2.53%	
Lyantonde	1	2	50%		9	3	3	3	3	0	0	38	7.89%	null%	100%	33.33%	
Manafwa	5	12	42%	88	88	0	2	0	2	0	0	8	0%	102%	0%	0%	
Maracha	10	10	100%	134	134	0	0	0	0	1	0			100%	0%	0%	
Masaka	14	21	67%	105	94	5	13	5	13	3	2	97	3.09%	102%	100%	5.32%	
Masindi	13	14	93%	230	217	3	12	3	11	0	0			100%	67%	1.38%	
Mayuge	7	14	50%	175	134	3	1	3	1	2	0	33	6.06%	77%	100%	2.24%	
Mbale	17	33	52%	208	203	2	8	2	7	1	0	59	1.69%	101%	67%	0.99%	
Mbarara	19	45	42%	291	195	4	21	4	21	1	0	162	4.94%	72%	100%	2.05%	
Mitooma	7	9	78%	88	86	2	5	2	5	0	0	10	0%	104%	100%	2.33%	
Mityana	23	26	88%	257	240	4	16	5	22	0	0	78	6.41%	100%	-167%	1.67%	
Moroto	5	12	42%	30	30	0	0	0	0	0	0	5	0%	100%	0%	0%	
Moyo	14	14	100%	59	59	0	0	0	0	0	0	6	0%	100%	0%	0%	
Mpigi	1	2	50%	22	21	0	1	0	1	0	0	67	2.99%	100%	0%	0%	
Mubende	15	23	65%	415	366	13	37	14	36	0	0	138	0%	97%	100%	3.55%	
Mukono	7	22	32%	302	289	13	17	13	17	0	0			101%	100%	4.5%	
Nakapiripirit	9	14	64%	83	82	0	1	0	0	0	0	4	0%	100%	0%	0%	
Nakaseke	13	15	87%	142	132	2	7	2	7	0	1	33	3.03%	98%	100%	1.52%	
Nakasongola	13	24	54%	115	108	3	5	0	4	0	0	22	4.55%	98%	0%	2.78%	
Namayingo	7	20	35%	77	105	1	2	1	3	3	1	26	3.85%	140%	0%	0.95%	
Namisindwa	7	18	39%	91	91	0	0	0	0	1	2			100%	0%	0%	
Namutumba	4	7	57%	128	125	0	2	0	1	0	0			99%	0%	0%	
Napak	4	8	50%	57	57	0	0	0	0	0	0	6	0%	100%	0%	0%	
Nebbi	12	12	100%	236	232	3	4	3	4	0	0	40	2.5%	100%	100%	1.29%	
Ngora	5	8	62%	61	60	0	3	0	3	0	0	12	0%	103%	0%	0%	
Ntoroko	3	4	75%	55	54	0	1	0	1	0	0	5	0%	100%	0%	0%	
Ntungamo	14	17	82%	232	197	2	14	2	14	2	1	39	2.56%	90%	100%	1.02%	
Nwoya	4	7	57%	80	74	1	5	1	5	0	0	25	0%	99%	100%	1.35%	
Omoro	2	6	33%	18	16	0	3	0	3	0	0			107%	0%	0%	

Ministry of Health Option B+ Weekly Report (3.2)

Week ending 2018-08-05 (2018W31)

District and weekly rate				For Week ending 2018-08-05 (2018W31)									EID November 2015		Analysis		
Level	No of facilities reporting	No of registered facilities	Proportion of facilities reporting (reporting rate)	a. Total ANC1 visits	b. Total No of mothers tested at 1st ANC visit	c. Total No HIV Tested Positive at 1st ANC visit	d. Total No with known HIV+ status by ANC1	e. Total initiating Option B+ at 1st ANC visit	f. Total no on ART treatment by ANC1	h. Has Test Kits stockout	i. Has ARVs stockout	A. Number of EID tests carried out	B. Proportion of EID tests testing positive for HIV	1. Proportion of ANC1 with unknown status tested	2. Proportion of HIV+ women not yet on ART initiated	3. Proportion of women tested positive out of those tested	
Otuke	6	7	86%	86	82	3	4	3	4	0	0	10	0%	100%	100%	3.66%	
Oyam	3	7	43%	88	79	1	9	1	9	0	0	40	0%	100%	100%	1.27%	
Pader	4	11	36%	24	23	1	1	1	1	0	0	50	4%	100%	100%	4.35%	
Pakwach	9	9	100%	119	115	0	4	0	4	0	0			100%	0%	0%	
Pallisa	16	19	84%	238	239	1	2	1	2	1	1	12	0%	101%	100%	0.42%	
Rakai	10	15	67%	81	58	4	12	2	11	1	0	155	3.23%	84%	50%	6.9%	
Rubirizi	6	8	75%	38	34	0	4	0	4	1	0	16	0%	100%	0%	0%	
Rukungiri	17	20	85%	189	173	2	15	3	15	1	2	61	1.64%	99%	100%	1.16%	
Serere	11	14	79%	137	153	1	3	1	3	0	0	38	7.89%	114%	100%	0.65%	
Sheema	7	9	78%	90	82	5	8	5	8	0	0	51	1.96%	100%	100%	6.1%	
Sironko	14	16	88%	150	146	2	2	2	2	0	0	10	0%	99%	100%	1.37%	
Soroti	16	21	76%	189	164	4	10	4	10	1	0	42	4.76%	92%	100%	2.44%	
Tororo	18	49	37%	291	274	17	6	7	5	0	0	59	1.69%	96%	39%	6.2%	
Wakiso	56	81	69%	1055	966	32	78	33	79	1	0	252	4.37%	99%	103%	3.31%	
Yumbe	13	13	100%	287	287	0	0	0	0	0	0	13	7.69%	100%	0%	0%	
Zombo	10	11	91%	176	175	0	1	0	1	0	0	23	4.35%	100%	0%	0%	

EID data provided by CPHL up to 2015-12-10 cumulative for the entire month of November 2015

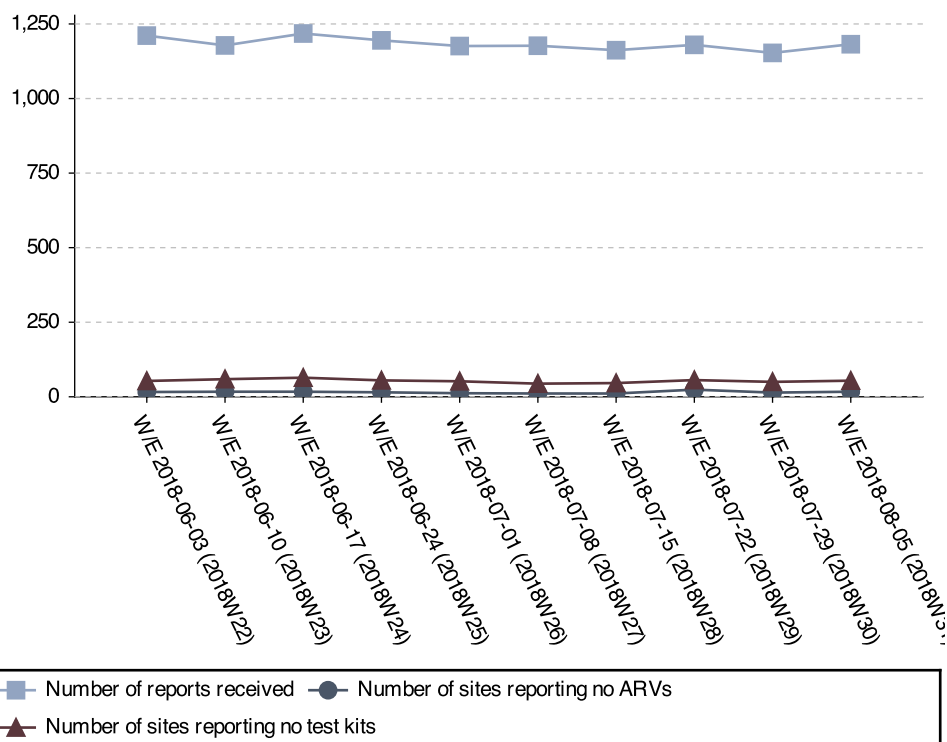
Ministry of Health Option B+ Weekly Report (3.2)

Week ending 2018-08-05 (2018W31)

Stock-outs for the last 6 weeks per facility level

	2018W31		2018W30		2018W29		2018W28		2018W27		2018W26	
	ARVs	HIV Test kits	ARVs	HIV Test kits	ARVs	HIV Test kits	ARVs	HIV Test kits	ARVs	HIV Test kits	ARVs	HIV Test kits
Clinic	0	0	0	0	0	0	0	0	0	0	0	0
General Hospital	3	1	0	1	1	0	1	1	0	1	0	0
HC II	1	22	0	17	3	23	1	20	1	13	0	18
HC III	13	33	14	36	20	37	9	28	9	35	11	34
HC IV	0	1	0	1	0	3	0	1	0	0	1	2
NR Hospital	0	0	0	0	0	0	0	0	0	0	0	0
Other/unknown	0	1	0	0	0	0	0	0	0	0	0	1
RR Hospital	0	0	0	2	0	0	0	0	0	0	0	0
Total	17	58	14	57	24	63	11	50	10	49	12	55

Stock-out trends for the last 10 weeks



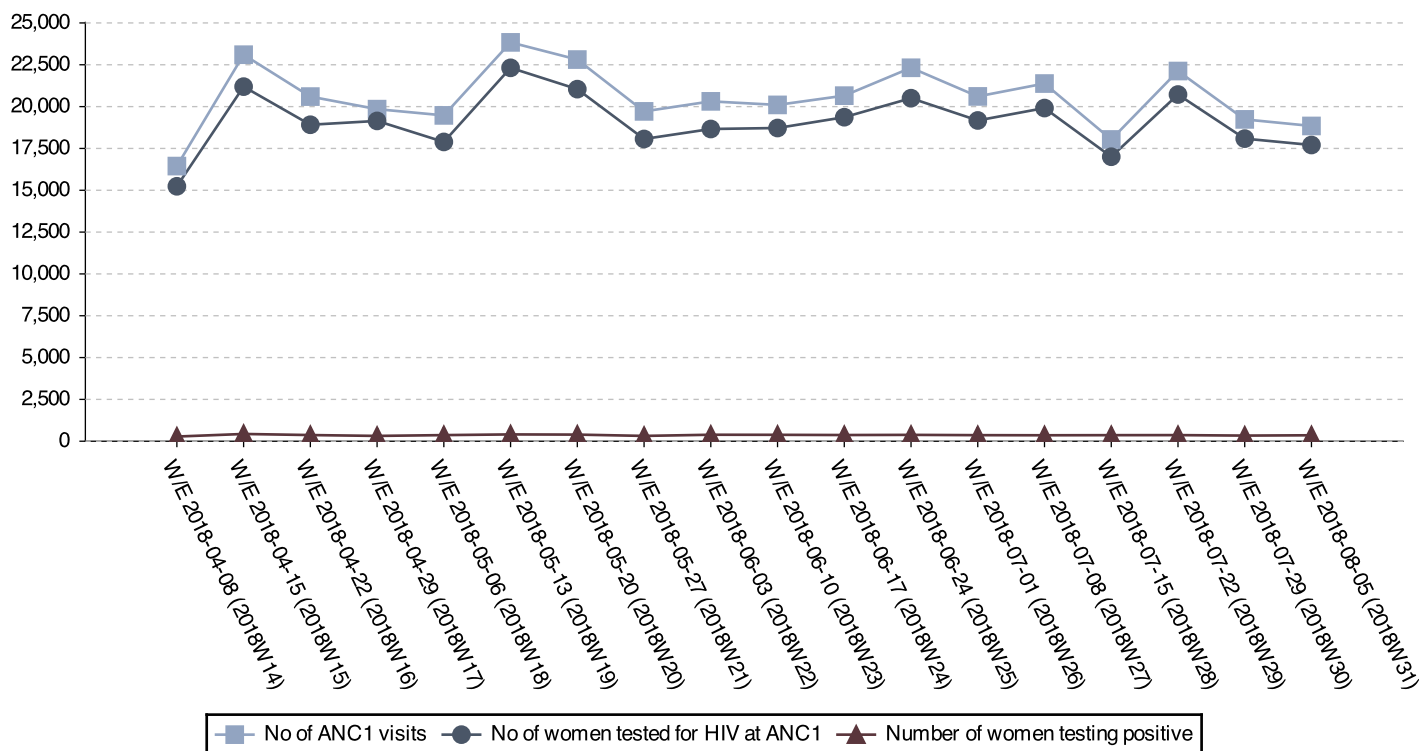
Current stock-outs per IP

IP	Test kit stockout	ARV stockout
RHITES-SW	16	3
Baylor	8	0
RHITES-EC	8	1
PREFA	7	3
RHITES-E	6	6
IDI	3	0
Mildmay	2	1
Walter Reed	2	1
TASO Teso	1	0
USAID ASSIST	1	0
USAID PHS	1	2
TASO	1	2
RHSP	1	0
MJAP	1	0
IRCU	0	2
Total	58	21

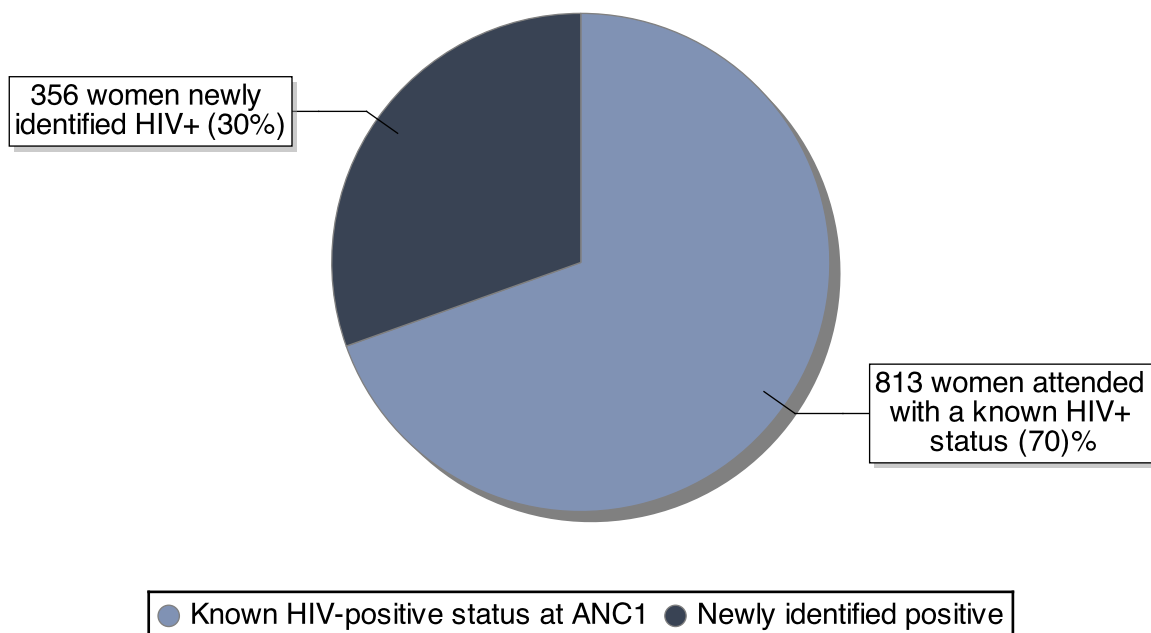
Ministry of Health Option B+ Weekly Report (3.2)

Week ending 2018-08-05 (2018W31)

ANC trends for the last 18 weeks



Break down of existing vs. newly identified infections



Ratio newly identified / already known status: 0.44

Ministry of Health Option B+ Weekly Report (3.2)

Week ending 2018-08-05 (2018W31)

District Service Delivery Focus

High HIV+ EID Testing

This section shows 20 districts with high proportions of HIV+ 1st PCR EID tests. Please consider both the actual number and the proportion.

District	# EID Tests	# Positive	% Positive
Amudat	3	1	33.33
Bududa	5	1	20.00
Buvuma	13	2	15.38
Abim	7	1	14.29
Amolatar	18	2	11.11
Kaberamaido	19	2	10.53
Agago	33	3	9.09
Butaleja	11	1	9.09
Adjumani	11	1	9.09
Kanungu	23	2	8.70
Alebtong	23	2	8.70
Lamwo	25	2	8.00
Lyantonde	38	3	7.89
Serere	38	3	7.89
Yumbe	13	1	7.69
Isingiro	56	4	7.14
Kasese	45	3	6.67
Mityana	78	5	6.41
Kyenjojo	95	6	6.32
Lwengo	48	3	6.25
Mayuge	33	2	6.06
Kabale	53	3	5.66
Dokolo	18	1	5.56
Apac	36	2	5.56
Kumi	19	1	5.26

Low initiation on ART

This section shows 15 districts with low ART initiation rates. Please consider the actual ART need in addition to the proportion.

District	ART Need	# Initiated	% Initiated
Nakapiripirit	1	0	0
Apac District	3	0	0
Bududa	1	0	0
Namutumba	1	0	0
Kaliro District	1	0	0
Kamwenge	1	0	0
Nakasongola	4	0	0
Tororo	18	7	39
Kiboga	9	4	44
Busia District	2	1	50
Rakai District	5	2	50
Arua District	5	7	50
Mbale District	3	2	67
Masindi	4	3	67

Data Quality challenges by IP

'Overtesting'

IPs listed here have 'overtested' – which means that there are issues with data quality. Ensure that facilities have the latest version of the job aide, and that health workers understand that most indicators pertain to ANC1 visits only.

IP	# ANC1 Visits	# Tested	% Tested
RTI	74	76	110
USAID	1021	1046	108
TASO Teso	937	955	106
IRCU	317	318	104
USAID PHS	404	397	103
Walter Reed	487	473	102
UCMB	591	560	101

'Overinitiating'

IPs listed here have 'overinitiated' – which means that there are issues with data quality. Ensure that facilities have the latest version of the job aide, and that health workers understand that most indicators pertain to ANC1 visits only.

IP	ART Need	# Initiated	% Initiated
RHITES-SW	-1	32	740
Reach Out	1	3	500
USAID	14	18	129
TASO Teso	9	11	122
Baylor	28	31	117
Mildmay	65	68	102

None of the proportions mentioned above should exceed 100%, as all proportions relate to ANC1 visits only. They take both women with a known positive status and women already on ART into consideration. Please see <http://reports.dhis2sms.ug> for further details, including detailed facility data.