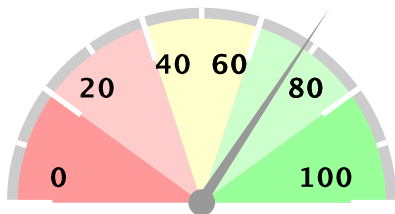


Ministry of Health Option B+ Weekly Report (3.2)

Week ending 2018-07-29 (2018W30)

Summary

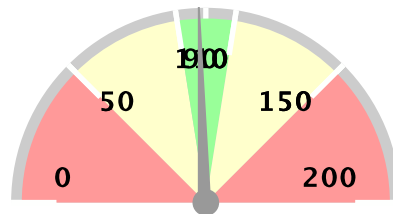
Weekly reporting rate



69%

1173 reports received out of 1705 registered facilities

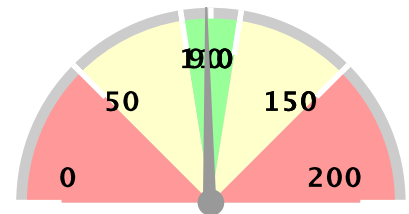
% of ANC1 attendees tested for HIV



98%

19605 ANC1 visits

% of women initiated on Option B+



99%

395 initiated on ART

Stockouts and missed appointments

Facilities without ARVs	14	1%
Facilities without test kits	49	4%
Number missed appointments	884	

1st PCR EID testing for August 2015*

Number of EID tests	4936
Number of positive EID tests	169
Proportion testing positive	3.42%

The week in numbers

Number of reports received this week 1173

Number of facilities registered for B+ 1705

Testing coverage for this week

Number of ANC 1 visits 19605

No. tested for HIV at ANC 1 94% 18452

No. HIV+ women identified at ANC 1 1108

Newly identified thru testing 31% 349

With a known status 69% 759

Proportion newly tested +ve at ANC 1 1.89%

Proportion of +ve women at ANC 1 5.65%

ART coverage for this week

Total HIV + Women at ANC 1 1108

Total already on ART 68% 750

Total to be initiated 64% 713

Total no of women initiated on ART 395

Proportion of women initiated on ART 181%

Proportion with known status already on ART 98.81%

This proportion shows how many women who have a known positive status are already on ART

The data as presented in this report using data from MoH/EOC Weekly Reporting and CPHL. PMTCT service delivery data is weekly data, EID testing data is cumulative monthly. EID number includes data up 2013-09-01. Starting from June 2014, EID data contains only 1st PCR tests.

Ministry of Health Option B+ Weekly Report (3.2)

Week ending 2018-07-29 (2018W30)

Overall performance per IP

Note: IP data does not add up to national totals due to the fact that IPs overlap in districts. EID data is aggregate for all districts in which an IP operates, and not based on individual facilities supported by an IP.

District and weekly rate				For Week ending 2018-07-29 (2018W30)									EID November 2015		Analysis		
Level	No of facilities reporting	No of registered facilities	Proportion of facilities reporting (reporting rate)	a. Total ANC1 visits	b. Total No of mothers tested at 1st ANC visit	c. Total No HIV Tested Positive at 1st ANC visit	d. Total No with known HIV+ status by ANC1	e. Total initiating Option B+ at 1st ANC visit	f. Total no on ART treatment by ANC1	h. Has Test Kits stockout	i. Has ARVs stockout	A. Number of EID tests carried out	B. Proportion of EID tests testing positive for HIV	1. Proportion of ANC1 with unknown status tested	2. Proportion of HIV+ women not yet on ART initiated	3. Proportion of women tested positive out of those tested	
Uganda	1153	1696	68%	19236	18086	336	742	380	734	50	14	4936	3.42%	98%	99%	1.86%	
Baylor	99	112	88%	1535	1449	34	64	31	58	4	0	402	4.48%	99%	77%	2.35%	
CAF	4	6	67%	15	8	1	7	1	7	0	0	1133	3.09%	100%	100%	12.5%	
CUAMM	33	63	52%	460	437	0	4	0	4	0	2	29	6.9%	96%	0%	0%	
HIWA	7	9	78%	64	56	1	1	1	2	0	0	1281	2.65%	89%	0%	1.79%	
IDI-KCC	7	7	100%	1037	983	20	54	19	54	0	0	734	2.72%	100%	95%	2.03%	
IDI	195	199	98%	3604	3506	33	81	76	77	2	0	330	3.64%	100%	107%	0.94%	
IRCU	11	15	73%	261	251	4	10	5	11	0	0	1457	3.09%	100%	157%	1.59%	
Kalangala	4	15	27%	22	17	0	4	0	4	0	0	32	0%	94%	0%	0%	
Mildmay	122	155	79%	2114	1927	58	121	55	118	4	0	659	3.19%	97%	86%	3.01%	
MJAP	19	22	86%	666	565	21	31	19	31	2	0	896	3.12%	89%	88%	3.72%	
MRC-UVRI	1	1	100%	1	1	0	0	0	0	0	0	734	2.72%	100%	0%	0%	
PREFA	74	106	70%	827	774	17	48	16	46	3	2	567	3.53%	99%	76%	2.2%	
Reach Out	4	7	57%	8	2	0	6	0	6	0	0	1085	3.04%	100%	0%	0%	
RHITES-EC	75	121	62%	1525	1418	16	30	46	29	6	2	279	2.15%	95%	307%	1.13%	
RHITES-E	127	161	79%	1821	1739	27	41	33	44	14	8	183	2.19%	98%	123%	1.55%	
RHITES-SW	194	215	90%	2437	2165	47	117	37	119	12	0	648	3.55%	93%	87%	2.17%	
RHSP	10	15	67%	83	78	2	6	2	6	0	0	155	3.23%	101%	100%	2.56%	
RHU	0	1	0%									64	1.56%	null%	null%		
RTI	9	19	47%	66	75	2	2	1	2	1	0	2002	3.05%	117%	50%	2.67%	
SUSTAIN	10	12	83%	491	459	11	36	12	36	0	0	723	2.77%	101%	109%	2.4%	
TASO	52	65	80%	775	695	13	50	13	48	5	2	1672	3.11%	96%	88%	1.87%	
TASO Teso	65	93	70%	889	883	19	19	5	18	1	0	170	4.71%	101%	25%	2.15%	
UCMB	14	18	78%	495	465	8	28	9	25	0	0	1907	2.83%	100%	83%	1.72%	
UHMG	5	18	28%	20	20	1	0	1	0	0	0	1232	3.17%	100%	0%	5%	
UPMB	3	13	23%	25	24	0	1	0	1	0	0	1399	3.5%	100%	0%	0%	
USAID ASSIST	72	125	58%	1153	1137	26	35	20	37	2	0	569	3.69%	102%	82%	2.29%	
USAID PHS	26	39	67%	326	310	5	15	6	18	0	0	2064	3.29%	100%	150%	1.61%	

Ministry of Health Option B+ Weekly Report (3.2)

Week ending 2018-07-29 (2018W30)

District and weekly rate			For Week ending 2018-07-29 (2018W30)									EID November 2015		Analysis		
Level	No of facilities reporting	No of registered facilities	Proportion of facilities reporting (reporting rate)	a. Total ANC1 visits	b. Total No of mothers tested at 1st ANC visit	c. Total No HIV Tested Positive at 1st ANC visit	d. Total No with known HIV+ status by ANC1	e. Total initiating Option B+ at 1st ANC visit	f. Total no on ART treatment by ANC1	h. Has Test Kits stockout	i. Has ARVs stockout	A. Number of EID tests carried out	B. Proportion of EID tests testing positive for HIV	1. Proportion of ANC1 with unknown status tested	2. Proportion of HIV+ women not yet on ART initiated	3. Proportion of women tested positive out of those tested
Walter Reed	21	64	33%	367	345	8	20	8	20	2	2	39	5.13%	99%	100%	2.32%

EID data provided by CPHL up to 2015-12-10 cumulative for the entire month of November 2015

Overall performance per district

Note:

Ministry of Health Option B+ Weekly Report (3.2)

Week ending 2018-07-29 (2018W30)

District and weekly rate				For Week ending 2018-07-29 (2018W30)									EID November 2015		Analysis		
Level	No of facilities reporting	No of registered facilities	Proportion of facilities reporting (reporting rate)	a. Total ANC1 visits	b. Total No of mothers tested at 1st ANC visit	c. Total No HIV Tested Positive at 1st ANC visit	d. Total No with known HIV+ status by ANC1	e. Total initiating Option B+ at 1st ANC visit	f. Total no on ART treatment by ANC1	h. Has Test Kits stockout	i. Has ARVs stockout	A. Number of EID tests carried out	B. Proportion of EID tests testing positive for HIV	1. Proportion of ANC1 with unknown status tested	2. Proportion of HIV+ women not yet on ART initiated	3. Proportion of women tested positive out of those tested	
Uganda	1153	1696	68%	19236	18086	336	742	380	734	50	14	4936	3.42%	98%	99%	1.86%	
Abim	5	8	62%	29	27	0	2	0	2	0	0	7	14.29%	100%	0%	0%	
Adjumani	12	12	100%	118	118	1	0	1	0	0	0	11	9.09%	100%	100%	0.85%	
Agago	4	9	44%	84	81	1	3	1	3	0	0	33	9.09%	100%	100%	1.23%	
Alebong	7	7	100%	113	150	3	1	2	1	0	0	23	8.7%	134%	50%	2%	
Amolatar	3	5	60%	74	72	2	2	2	2	0	0	18	11.11%	100%	100%	2.78%	
Amudat	2	4	50%	46	46	0	0	0	0	0	0	3	33.33%	100%	0%	0%	
Amuria	12	14	86%	193	201	0	3	1	2	0	0	26	0%	106%	100%	0%	
Amuru	2	8	25%	39	37	0	0	0	0	0	0	8	0%	95%	0%	0%	
Apac	7	12	58%	148	146	7	2	4	2	0	0	36	5.56%	100%	57%	4.79%	
Arua	37	42	88%	601	591	1	8	1	9	2	0	54	1.85%	100%	0%	0.17%	
Budaka	8	14	57%	98	96	3	1	3	3	0	0	7	0%	99%	300%	3.12%	
Bududa	7	8	88%	86	66	1	2	2	2	1	0	5	20%	79%	200%	1.52%	
Bugiri	9	15	60%	191	189	2	0	2	0	0	0	38	2.63%	99%	100%	1.06%	
Buhweju	5	6	83%	39	36	0	1	0	1	1	0	5	0%	95%	0%	0%	
Buikwe	13	32	41%	220	203	8	15	8	15	0	0			99%	100%	3.94%	
Bukedea	5	8	62%	93	97	0	3	0	2	0	0	14	0%	108%	0%	0%	
Bukwo	5	5	100%	26	30	2	2	9	4	0	0			125%	0%	6.67%	
Buliisa	8	8	100%	119	117	1	2	1	2	0	0	9	0%	100%	100%	0.85%	
Bundibugyo	8	11	73%	152	138	1	5	1	5	1	0	4	0%	94%	100%	0.72%	
Bushenyi	13	18	72%	170	150	1	15	1	18	0	0	64	1.56%	97%	-33%	0.67%	
Busia	8	12	67%	135	110	5	3	36	4	0	0	29	0%	83%	900%	4.55%	
Butaleja	12	13	92%	212	192	4	2	3	2	2	0	11	9.09%	91%	75%	2.08%	
Buvuma	2	10	20%	13	13	0	0	0	0	1	1	13	15.38%	100%	0%	0%	
Buyende	6	9	67%	201	162	1	1	1	1	1	0			81%	100%	0.62%	
Dokolo	5	5	100%	73	71	3	2	1	2	0	0	18	5.56%	100%	33%	4.23%	
Gulu	10	14	71%	170	155	3	15	4	15	0	0	115	1.74%	100%	133%	1.94%	
Hoima	24	26	92%	466	450	12	15	12	15	0	0	78	3.85%	100%	100%	2.67%	
Ibanda	10	10	100%	158	144	3	10	3	8	0	0	31	0%	97%	60%	2.08%	
Iganga	10	17	59%	167	164	1	2	1	2	1	1	47	2.13%	99%	100%	0.61%	
Isingiro	24	26	92%	382	324	1	13	1	13	2	0	56	7.14%	88%	100%	0.31%	
Jinja	16	23	70%	207	177	2	7	3	6	1	0	83	3.61%	88%	100%	1.13%	

Ministry of Health Option B+ Weekly Report (3.2)

Week ending 2018-07-29 (2018W30)

District and weekly rate				For Week ending 2018-07-29 (2018W30)									EID null		Analysis		
Level	No of facilities reporting	No of registered facilities	Proportion of facilities reporting (reporting rate)	a. Total ANC1 visits	b. Total No of mothers tested at 1st ANC visit	c. Total No HIV Tested Positive at 1st ANC visit	d. Total No with known HIV+ status by ANC1	e. Total initiating Option B+ at 1st ANC visit	f. Total no on ART treatment by ANC1	h. Has Test Kits stockout	i. Has ARVs stockout	A. Number of EID tests carried out	B. Proportion of EID tests testing positive for HIV	1. Proportion of ANC1 with unknown status tested	2. Proportion of HIV+ women not yet on ART initiated	3. Proportion of women tested positive out of those tested	
Kaabong	5	13	38%	78	58	0	0	0	0	0	0			74%	0%	0%	
Kabale	26	27	96%	185	179	1	5	1	5	1	0	53	5.66%	99%	100%	0.56%	
Kabarole	21	25	84%	213	184	8	18	7	15	0	0	154	3.25%	94%	64%	4.35%	
Kaberamaido	9	12	75%	147	138	1	8	1	7	1	0	19	10.53%	99%	50%	0.72%	
Kagadi	11	11	100%	303	284	3	21	41	20	0	0			101%	100%	1.06%	
Kakumiro	8	8	100%	282	275	4	7	4	7	0	0			100%	100%	1.45%	
Kalangala	4	15	27%	22	17	0	4	0	4	0	0	32	0%	94%	0%	0%	
Kaliro	6	6	100%	151	146	0	5	0	4	0	0	9	0%	100%	0%	0%	
Kalungu	11	16	69%	70	66	1	3	1	3	0	0	49	0%	99%	100%	1.52%	
Kampala	27	40	68%	1734	1642	32	86	33	89	0	0	734	2.72%	100%	113%	1.95%	
Kamuli	16	17	94%	365	356	5	12	4	11	0	0	29	0%	101%	100%	1.4%	
Kamwenge	14	15	93%	236	232	5	13	2	10	0	0	58	3.45%	104%	25%	2.16%	
Kanungu	14	17	82%	164	153	3	9	3	9	0	0	23	8.7%	99%	100%	1.96%	
Kasese	32	40	80%	405	394	4	5	3	3	1	0	45	6.67%	98%	50%	1.02%	
Katakwi	7	12	58%	42	41	0	1	0	1	0	0			100%	0%	0%	
Kayunga	4	11	36%	135	125	3	10	3	10	1	1	26	0%	100%	100%	2.4%	
Kibaale	6	6	100%	152	146	1	6	1	6	0	0	59	5.08%	100%	0%	0.68%	
Kiboga	8	8	100%	149	140	4	8	4	8	0	0	21	4.76%	99%	100%	2.86%	
Kibuku	11	11	100%	159	149	2	0	1	1	2	3	3	0%	94%	100%	1.34%	
Kiruhura	18	21	86%	225	211	3	11	3	11	1	0	51	3.92%	99%	100%	1.42%	
Kiryandongo	11	11	100%	293	268	4	6	4	6	0	0	24	4.17%	93%	100%	1.49%	
Kisoro	19	20	95%	225	217	1	0	2	1	3	0	26	0%	96%	0%	0.46%	
Kitgum	7	12	58%	155	147	3	8	4	8	0	0	59	0%	100%	133%	2.04%	
Koboko	8	8	100%	182	180	0	2	0	2	0	0	13	0%	100%	0%	0%	
Kole	2	5	40%	36	35	1	1	0	1	0	0	13	0%	100%	0%	2.86%	
Kotido	7	16	44%	153	152	0	1	0	1	0	2	4	0%	100%	0%	0%	
Kumi	5	9	56%	78	95	15	1	1	3	0	0	19	5.26%	123%	8%	15.79%	
Kyankwanzi	7	12	58%	149	146	5	3	5	3	0	0	16	0%	100%	100%	3.42%	
Kyegegwa	9	9	100%	221	209	7	9	7	9	1	0	41	4.88%	99%	100%	3.35%	
Kyenjojo	18	18	100%	306	284	9	15	11	17	1	0	95	6.32%	98%	157%	3.17%	
Lamwo	6	9	67%	63	62	0	1	0	1	0	0	25	8%	100%	0%	0%	
Lira	6	19	32%	126	106	1	10	1	9	1	0	96	5.21%	91%	50%	0.94%	

Ministry of Health Option B+ Weekly Report (3.2)

Week ending 2018-07-29 (2018W30)

District and weekly rate				For Week ending 2018-07-29 (2018W30)									EID November 2015		Analysis		
Level	No of facilities reporting	No of registered facilities	Proportion of facilities reporting (reporting rate)	a. Total ANC1 visits	b. Total No of mothers tested at 1st ANC visit	c. Total No HIV Tested Positive at 1st ANC visit	d. Total No with known HIV+ status by ANC1	e. Total initiating Option B+ at 1st ANC visit	f. Total no on ART treatment by ANC1	h. Has Test Kits stockout	i. Has ARVs stockout	A. Number of EID tests carried out	B. Proportion of EID tests testing positive for HIV	1. Proportion of ANC1 with unknown status tested	2. Proportion of HIV+ women not yet on ART initiated	3. Proportion of women tested positive out of those tested	
Luuka	4	7	57%	77	77	0	1	0	1	0	0	4	0%	101%	0%	0%	
Luweero	21	57	37%	300	295	6	19	6	18	1	0	99	2.02%	105%	83%	2.03%	
Lwengo	6	13	46%	98	86	3	10	3	9	0	0	48	6.25%	98%	75%	3.49%	
Lyantonde	1	2	50%	5	3	1	2	1	2	0	0	38	7.89%	100%	100%	33.33%	
Manafwa	5	12	42%	80	80	1	2	1	2	1	0	8	0%	103%	100%	1.25%	
Maracha	10	10	100%	152	151	1	2	1	1	0	0			101%	50%	0.66%	
Masaka	14	21	67%	74	62	1	8	1	9	2	2	97	3.09%	94%	0%	1.61%	
Masindi	12	14	86%	252	242	5	10	4	10	0	0			100%	67%	2.07%	
Mayuge	5	14	36%	85	83	1	1	1	1	1	0	33	6.06%	99%	100%	1.2%	
Mbale	21	33	64%	215	208	5	11	5	11	1	0	59	1.69%	102%	100%	2.4%	
Mbarara	20	45	44%	353	268	13	22	11	22	2	0	162	4.94%	81%	85%	4.85%	
Mitooma	9	9	100%	93	91	3	2	2	2	0	0	10	0%	100%	67%	3.3%	
Mityana	20	26	77%	213	195	9	16	8	16	1	0	78	6.41%	99%	78%	4.62%	
Moroto	5	12	42%	42	42	0	2	0	2	0	0	5	0%	105%	0%	0%	
Moyo	14	14	100%	66	66	1	1	6	1	0	0	6	0%	102%	600%	1.52%	
Mpigi	1	2	50%	11	8	1	3	1	1	0	0	67	2.99%	100%	33%	12.5%	
Mubende	16	23	70%	378	287	9	27	8	26	1	0	138	0%	82%	80%	3.14%	
Mukono	6	22	27%	89	84	1	5	1	5	0	0			100%	100%	1.19%	
Nakapiripirit	9	14	64%	108	108	0	0	0	0	0	0	4	0%	100%	0%	0%	
Nakaseke	10	15	67%	131	119	0	12	0	12	0	0	33	3.03%	100%	0%	0%	
Nakasongola	9	24	38%	90	83	1	6	0	5	0	0	22	4.55%	99%	0%	1.2%	
Namayingo	7	20	35%	57	40	0	2	0	2	3	1	26	3.85%	73%	0%	0%	
Namisindwa	4	18	22%	52	38	0	0	0	0	1	2			73%	0%	0%	
Namutumba	5	7	71%	106	103	1	1	1	1	0	0			98%	100%	0.97%	
Napak	2	8	25%	46	46	0	1	0	1	0	0	6	0%	102%	0%	0%	
Nebbi	10	12	83%	215	210	2	5	2	1	0	0	40	2.5%	100%	33%	0.95%	
Ngora	5	8	62%	67	67	0	4	0	4	0	0	12	0%	106%	0%	0%	
Ntoroko	2	4	50%	40	38	0	2	0	2	0	0	5	0%	100%	0%	0%	
Ntungamo	16	17	94%	245	212	15	12	5	12	1	0	39	2.56%	91%	33%	7.08%	
Nwoya	4	7	57%	67	64	3	2	3	5	0	0	25	0%	98%	0%	4.69%	
Omoro	1	6	17%	0	0	0	0	0	0	0	0			0%	0%	N/A	
Otuke	7	7	100%	107	100	3	1	3	1	1	0	10	0%	94%	100%	3%	

Ministry of Health Option B+ Weekly Report (3.2)

Week ending 2018-07-29 (2018W30)

District and weekly rate				For Week ending 2018-07-29 (2018W30)									EID November 2015		Analysis		
Level	No of facilities reporting	No of registered facilities	Proportion of facilities reporting (reporting rate)	a. Total ANC1 visits	b. Total No of mothers tested at 1st ANC visit	c. Total No HIV Tested Positive at 1st ANC visit	d. Total No with known HIV+ status by ANC1	e. Total initiating Option B+ at 1st ANC visit	f. Total no on ART treatment by ANC1	h. Has Test Kits stockout	i. Has ARVs stockout	A. Number of EID tests carried out	B. Proportion of EID tests testing positive for HIV	1. Proportion of ANC1 with unknown status tested	2. Proportion of HIV+ women not yet on ART initiated	3. Proportion of women tested positive out of those tested	
Oyam	2	7	29%	35	33	0	2	0	2	0	0	40	0%	100%	0%	0%	
Pader	4	11	36%	36	34	0	2	0	2	0	0	50	4%	100%	0%	0%	
Pakwach	9	9	100%	144	138	0	6	0	6	0	0			100%	0%	0%	
Pallisa	14	19	74%	255	254	1	2	1	1	3	1	12	0%	100%	50%	0.39%	
Rakai	10	15	67%	83	78	2	6	2	6	0	0	155	3.23%	101%	100%	2.56%	
Rubirizi	6	8	75%	35	28	0	6	2	6	1	0	16	0%	97%	-100%	0%	
Rukungiri	17	20	85%	181	163	4	11	4	11	0	0	61	1.64%	96%	86%	2.45%	
Serere	9	14	64%	140	140	2	0	1	0	0	0	38	7.89%	100%	50%	1.43%	
Sheema	7	9	78%	97	88	1	9	1	10	0	0	51	1.96%	100%	0%	1.14%	
Sironko	15	16	94%	158	154	1	4	1	4	0	0	10	0%	100%	100%	0.65%	
Soroti	16	21	76%	172	138	2	6	2	6	0	0	42	4.76%	83%	100%	1.45%	
Tororo	21	49	43%	353	346	7	12	7	11	3	0	59	1.69%	101%	88%	2.02%	
Wakiso	57	81	70%	1057	1000	31	53	30	53	1	0	252	4.37%	100%	97%	3.1%	
Yumbe	13	13	100%	309	308	1	1	1	1	0	0	13	7.69%	100%	100%	0.32%	
Zombo	10	11	91%	240	238	3	4	3	4	0	0	23	4.35%	101%	100%	1.26%	

EID data provided by CPHL up to 2015-12-10 cumulative for the entire month of November 2015

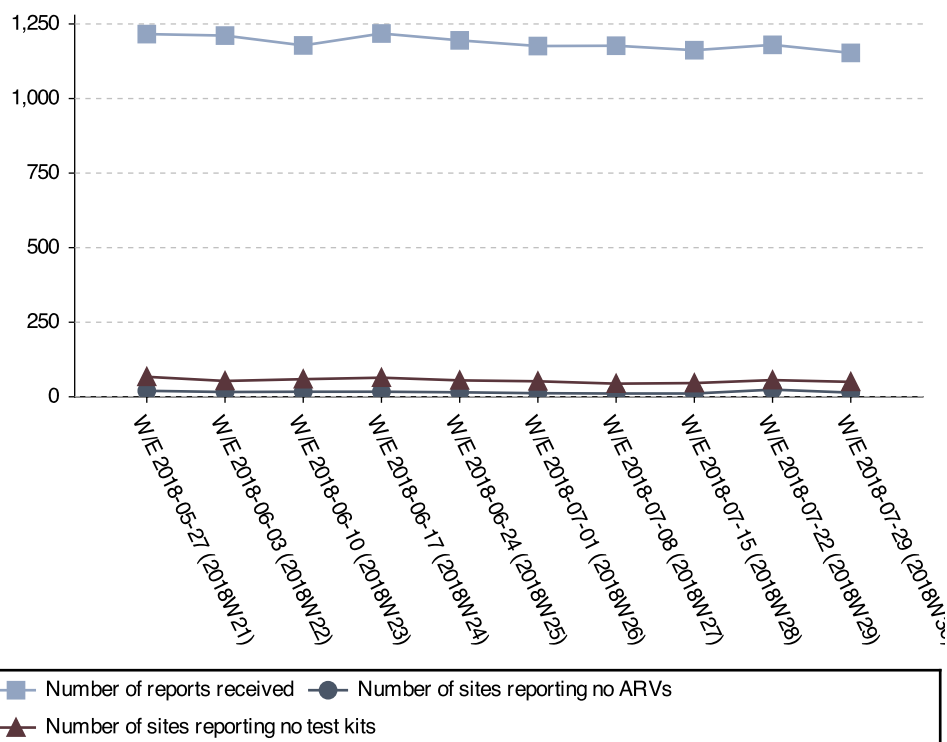
Ministry of Health Option B+ Weekly Report (3.2)

Week ending 2018-07-29 (2018W30)

Stock-outs for the last 6 weeks per facility level

	2018W30		2018W29		2018W28		2018W27		2018W26		2018W25	
	ARVs	HIV Test kits	ARVs	HIV Test kits	ARVs	HIV Test kits	ARVs	HIV Test kits	ARVs	HIV Test kits	ARVs	HIV Test kits
Clinic	0	0	0	0	0	0	0	0	0	0	0	0
General Hospital	0	1	1	0	1	1	0	1	0	0	1	1
HC II	0	17	3	23	1	20	1	13	0	18	1	19
HC III	14	36	20	37	9	28	9	35	11	34	12	37
HC IV	0	1	0	3	0	1	0	0	1	2	1	1
NR Hospital	0	0	0	0	0	0	0	0	0	0	0	0
Other/unknown	0	0	0	0	0	0	0	0	0	1	0	0
RR Hospital	0	2	0	0	0	0	0	0	0	0	0	0
Total	14	57	24	63	11	50	10	49	12	55	15	58

Stock-out trends for the last 10 weeks



Current stock-outs per IP

IP	Test kit stockout	ARV stockout
RHITES-E	14	8
RHITES-SW	12	0
RHITES-EC	6	2
TASO	5	2
Baylor	4	0
Mildmay	4	0
PREFA	3	2
MJAP	2	0
IDI	2	0
Walter Reed	2	2
USAID ASSIST	2	0
TASO Teso	1	0
RTI	1	0
CUAMM	0	2
Total	58	18

Ministry of Health Option B+ Weekly Report (3.2)

Week ending 2018-07-29 (2018W30)
