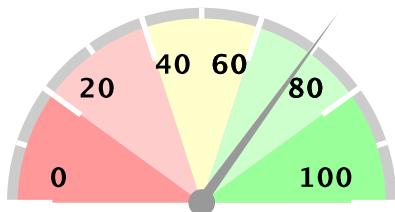


# Ministry of Health Option B+ Weekly Report (3.2)

Week ending 2018-07-22 (2018W29)

## Summary

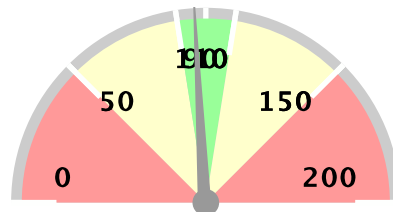
Weekly reporting rate



**70%**

1193 reports received out of 1705 registered facilities

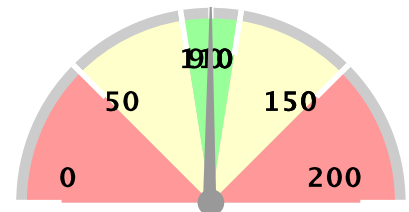
% of ANC1 attendees tested for HIV



**97%**

22501 ANC1 visits

% of women initiated on Option B+



**100%**

377 initiated on ART

### Stockouts and missed appointments

Facilities without ARVs	24	2%
Facilities without test kits	56	5%
Number missed appointments	863	

### 1st PCR EID testing for August 2015\*

Number of EID tests	4936
Number of positive EID tests	169
Proportion testing positive	3.42%

### The week in numbers

Number of reports received this week	1193
--------------------------------------	------

Number of facilities registered for B+	1705
--	------

### Testing coverage for this week

Number of ANC 1 visits	22501
No. tested for HIV at ANC 1	94% 21100
No. HIV+ women identified at ANC 1	1232
Newly identified thru testing	30% 375
With a known status	70% 857
Proportion newly tested +ve at ANC 1	1.78%
Proportion of +ve women at ANC 1	5.48%

### ART coverage for this week

Total HIV + Women at ANC 1	1232
Total already on ART	69% 847
Total to be initiated	69% 855
Total no of women initiated on ART	377
Proportion of women initiated on ART	227%
Proportion with known status already on ART	98.83%

This proportion shows how many women who have a known positive status are already on ART

The data as presented in this report using data from MoH/EOC Weekly Reporting and CPHL. PMTCT service delivery data is weekly data, EID testing data is cumulative monthly. EID number includes data up 2013-09-01. Starting from June 2014, EID data contains only 1st PCR tests.

# Ministry of Health Option B+ Weekly Report (3.2)

Week ending 2018-07-22 (2018W29)

## Overall performance per IP

Note: IP data does not add up to national totals due to the fact that IPs overlap in districts. EID data is aggregate for all districts in which an IP operates, and not based on individual facilities supported by an IP.

District and weekly rate				For Week ending 2018-07-22 (2018W29)									EID November 2015		Analysis		
Level	No of facilities reporting	No of registered facilities	Proportion of facilities reporting (reporting rate)	a. Total ANC1 visits	b. Total No of mothers tested at 1st ANC visit	c. Total No HIV Tested Positive at 1st ANC visit	d. Total No with known HIV+ status by ANC1	e. Total initiating Option B+ at 1st ANC visit	f. Total no on ART treatment by ANC1	h. Has Test Kits stockout	i. Has ARVs stockout	A. Number of EID tests carried out	B. Proportion of EID tests testing positive for HIV	1. Proportion of ANC1 with unknown status tested	2. Proportion of HIV+ women not yet on ART initiated	3. Proportion of women tested positive out of those tested	
Uganda	1180	1696	70%	22126	20721	365	824	367	811	56	24	4936	3.42%	97%	100%	1.76%	
Baylor	100	112	89%	1705	1643	34	71	36	78	3	0	402	4.48%	101%	135%	2.07%	
CAF	2	6	33%	6	5	0	1	0	1	0	0	1133	3.09%	100%	0%	0%	
CUAMM	32	63	51%	407	386	1	3	1	3	0	2	29	6.9%	96%	100%	0.26%	
HIWA	7	9	78%	73	67	1	4	1	4	1	0	1281	2.65%	97%	100%	1.49%	
IDI-KCC	6	7	86%	1106	955	40	61	37	61	0	0	734	2.72%	91%	92%	4.19%	
IDI	199	199	100%	3981	3791	35	95	31	92	3	0	330	3.64%	98%	91%	0.92%	
IRCU	12	15	80%	318	309	3	7	7	8	0	0	1457	3.09%	99%	350%	0.97%	
Kalangala	2	15	13%	11	10	0	1	0	1	0	0	32	0%	100%	0%	0%	
Mildmay	126	155	81%	2506	2296	69	143	69	138	4	2	659	3.19%	97%	95%	3.01%	
MJAP	20	22	91%	714	647	16	46	15	51	0	0	896	3.12%	97%	162%	2.47%	
MRC-UVRI	1	1	100%	3	2	0	1	0	1	0	0	734	2.72%	100%	0%	0%	
PREFA	79	106	75%	1053	967	27	62	31	59	4	1	567	3.53%	98%	103%	2.79%	
Reach Out	5	7	71%	10	5	2	5	2	5	0	0	1085	3.04%	100%	100%	40%	
RHITES-EC	80	121	66%	1999	1856	26	38	24	37	9	2	279	2.15%	95%	92%	1.4%	
RHITES-E	119	161	74%	2054	1890	17	26	16	16	13	14	183	2.19%	93%	52%	0.9%	
RHITES-SW	200	215	93%	2652	2433	36	125	35	126	14	1	648	3.55%	96%	111%	1.48%	
RHSP	10	15	67%	104	92	3	3	4	2	0	0	155	3.23%	91%	200%	3.26%	
RHU	0	1	0%									64	1.56%	null%	null%		
RTI	10	19	53%	96	125	6	3	2	4	0	0	2002	3.05%	134%	50%	4.8%	
SUSTAIN	10	12	83%	540	516	13	37	14	31	0	0	723	2.77%	103%	56%	2.52%	
TASO	47	65	72%	883	795	14	26	16	25	6	8	1672	3.11%	93%	92%	1.76%	
TASO Teso	69	93	74%	1053	1087	4	29	6	29	0	2	170	4.71%	106%	150%	0.37%	
UCMB	14	18	78%	538	515	4	31	5	31	0	0	1907	2.83%	102%	125%	0.78%	
UHMG	3	18	17%	18	16	0	2	0	2	0	0	1232	3.17%	100%	0%	0%	
UPMB	6	13	46%	65	62	1	4	1	4	0	0	1399	3.5%	102%	100%	1.61%	
USAID ASSIST	81	125	65%	1301	1241	23	53	26	53	2	0	569	3.69%	99%	118%	1.85%	
USAID PHS	27	39	69%	420	406	8	10	11	10	0	0	2064	3.29%	99%	225%	1.97%	

# Ministry of Health Option B+ Weekly Report (3.2)

Week ending 2018-07-22 (2018W29)

District and weekly rate			For Week ending 2018-07-22 (2018W29)									EID November 2015		Analysis		
Level	No of facilities reporting	No of registered facilities	Proportion of facilities reporting (reporting rate)	a. Total ANC1 visits	b. Total No of mothers tested at 1st ANC visit	c. Total No HIV Tested Positive at 1st ANC visit	d. Total No with known HIV+ status by ANC1	e. Total initiating Option B+ at 1st ANC visit	f. Total no on ART treatment by ANC1	h. Has Test Kits stockout	i. Has ARVs stockout	A. Number of EID tests carried out	B. Proportion of EID tests testing positive for HIV	1. Proportion of ANC1 with unknown status tested	2. Proportion of HIV+ women not yet on ART initiated	3. Proportion of women tested positive out of those tested
Walter Reed	21	64	33%	444	411	12	14	11	14	4	2	39	5.13%	96%	100%	2.92%

EID data provided by CPHL up to 2015-12-10 cumulative for the entire month of November 2015

## Overall performance per district

Note:

# Ministry of Health Option B+ Weekly Report (3.2)

Week ending 2018-07-22 (2018W29)

District and weekly rate				For Week ending 2018-07-22 (2018W29)									EID November 2015		Analysis		
Level	No of facilities reporting	No of registered facilities	Proportion of facilities reporting (reporting rate)	a. Total ANC1 visits	b. Total No of mothers tested at 1st ANC visit	c. Total No HIV Tested Positive at 1st ANC visit	d. Total No with known HIV+ status by ANC1	e. Total initiating Option B+ at 1st ANC visit	f. Total no on ART treatment by ANC1	h. Has Test Kits stockout	i. Has ARVs stockout	A. Number of EID tests carried out	B. Proportion of EID tests testing positive for HIV	1. Proportion of ANC1 with unknown status tested	2. Proportion of HIV+ women not yet on ART initiated	3. Proportion of women tested positive out of those tested	
Uganda	1180	1696	70%	22126	20721	365	824	367	811	56	24	4936	3.42%	97%	100%	1.76%	
Abim	6	8	75%	73	69	1	2	1	2	0	0	7	14.29%	97%	100%	1.45%	
Adjumani	12	12	100%	127	122	1	1	1	1	0	0	11	9.09%	97%	100%	0.82%	
Agago	4	9	44%	49	47	0	2	0	2	0	0	33	9.09%	100%	0%	0%	
Alebtong	7	7	100%	124	126	1	2	1	1	0	0	23	8.7%	103%	50%	0.79%	
Amolatar	4	5	80%	72	71	0	1	0	1	0	0	18	11.11%	100%	0%	0%	
Amudat	2	4	50%	34	34	0	0	0	0	0	0	3	33.33%	100%	0%	0%	
Amuria	12	14	86%	233	239	1	7	2	7	0	0	26	0%	106%	200%	0.42%	
Amuru	2	8	25%	21	20	0	1	0	1	0	0	8	0%	100%	0%	0%	
Apac	8	12	67%	216	194	3	13	3	13	0	0	36	5.56%	96%	100%	1.55%	
Arua	40	42	95%	700	675	3	9	3	9	1	0	54	1.85%	98%	0%	0.44%	
Budaka	7	14	50%	117	105	0	2	0	2	0	0	7	0%	91%	0%	0%	
Bududa	8	8	100%	104	79	0	2	0	0	1	0	5	20%	77%	0%	0%	
Bugiri	10	15	67%	251	254	3	2	2	2	0	0	38	2.63%	102%	100%	1.18%	
Buhweju	6	6	100%	42	38	1	1	1	1	1	0	5	0%	93%	100%	2.63%	
Buikwe	12	32	38%	250	217	7	11	6	11	2	0			91%	100%	3.23%	
Bukedea	5	8	62%	99	113	0	1	0	1	0	0	14	0%	115%	0%	0%	
Bukwo	5	5	100%	48	41	0	0	0	0	0	1			85%	0%	0%	
Buliisa	8	8	100%	140	126	1	7	1	7	1	0	9	0%	95%	100%	0.79%	
Bundibugyo	10	11	91%	220	197	2	4	2	4	1	0	4	0%	91%	100%	1.02%	
Bushenyi	14	18	78%	132	119	1	12	1	12	0	0	64	1.56%	99%	100%	0.84%	
Busia	8	12	67%	210	207	4	3	4	3	0	0	29	0%	100%	100%	1.93%	
Butaleja	11	13	85%	187	164	1	4	0	4	1	0	11	9.09%	90%	0%	0.61%	
Buvuma	3	10	30%	33	33	1	0	1	0	1	1	13	15.38%	100%	100%	3.03%	
Buyende	4	9	44%	151	123	1	0	1	0	1	0			81%	100%	0.81%	
Dokolo	5	5	100%	85	81	4	3	3	3	0	0	18	5.56%	99%	75%	4.94%	
Gulu	11	14	79%	173	155	4	19	5	19	0	0	115	1.74%	101%	125%	2.58%	
Hoima	24	26	92%	555	527	11	27	9	27	0	0	78	3.85%	100%	83%	2.09%	
Ibanda	10	10	100%	187	174	5	9	3	8	0	0	31	0%	98%	50%	2.87%	
Iganga	12	17	71%	273	253	3	1	3	1	3	1	47	2.13%	93%	100%	1.19%	
Isingiro	26	26	100%	349	318	3	16	3	15	2	0	56	7.14%	95%	75%	0.94%	
Jinja	15	23	65%	251	246	7	6	9	8	0	0	83	3.61%	100%	180%	2.85%	

# Ministry of Health Option B+ Weekly Report (3.2)

Week ending 2018-07-22 (2018W29)

District and weekly rate				For Week ending 2018-07-22 (2018W29)									EID null		Analysis		
Level	No of facilities reporting	No of registered facilities	Proportion of facilities reporting (reporting rate)	a. Total ANC1 visits	b. Total No of mothers tested at 1st ANC visit	c. Total No HIV Tested Positive at 1st ANC visit	d. Total No with known HIV+ status by ANC1	e. Total initiating Option B+ at 1st ANC visit	f. Total no on ART treatment by ANC1	h. Has Test Kits stockout	i. Has ARVs stockout	A. Number of EID tests carried out	B. Proportion of EID tests testing positive for HIV	1. Proportion of ANC1 with unknown status tested	2. Proportion of HIV+ women not yet on ART initiated	3. Proportion of women tested positive out of those tested	
Kaabong	5	13	38%	69	53	0	0	0	0	0	0			77%	0%	0%	
Kabale	27	27	100%	232	216	0	9	0	9	2	0	53	5.66%	97%	0%	0%	
Kabarole	22	25	88%	251	213	6	25	6	25	2	0	154	3.25%	94%	100%	2.82%	
Kaberamaido	9	12	75%	175	168	0	9	0	9	0	0	19	10.53%	101%	0%	0%	
Kagadi	11	11	100%	380	308	2	15	3	15	0	0			84%	150%	0.65%	
Kakumiro	8	8	100%	282	270	5	12	5	12	0	0			100%	100%	1.85%	
Kalangala	2	15	13%	11	10	0	1	0	1	0	0	32	0%	100%	0%	0%	
Kaliro	6	6	100%	182	173	0	4	0	4	0	0	9	0%	97%	0%	0%	
Kalungu	13	16	81%	133	110	5	8	6	8	0	0	49	0%	88%	125%	4.55%	
Kampala	26	40	65%	1922	1737	53	104	52	103	0	0	734	2.72%	96%	106%	3.05%	
Kamuli	15	17	88%	365	357	5	8	4	8	0	0	29	0%	100%	80%	1.4%	
Kamwenge	14	15	93%	208	227	4	9	4	13	0	0	58	3.45%	114%	0%	1.76%	
Kanungu	14	17	82%	165	154	3	12	3	12	0	1	23	8.7%	101%	100%	1.95%	
Kasese	32	40	80%	440	441	5	8	7	8	0	0	45	6.67%	102%	140%	1.13%	
Katakwi	7	12	58%	73	70	2	3	2	3	0	0			100%	100%	2.86%	
Kayunga	5	11	45%	209	207	6	4	6	4	1	1	26	0%	101%	100%	2.9%	
Kibaale	6	6	100%	76	72	2	4	2	1	0	0	59	5.08%	100%	100%	2.78%	
Kiboga	7	8	88%	166	152	9	10	8	10	0	0	21	4.76%	97%	89%	5.92%	
Kibuku	11	11	100%	234	211	2	0	2	0	3	2	3	0%	90%	100%	0.95%	
Kiruhura	18	21	86%	240	220	5	4	5	5	1	0	51	3.92%	93%	125%	2.27%	
Kiryandongo	11	11	100%	268	248	0	9	0	9	1	0	24	4.17%	96%	0%	0%	
Kisoro	18	20	90%	241	227	2	4	2	3	3	0	26	0%	96%	67%	0.88%	
Kitgum	8	12	67%	116	108	4	6	4	6	0	0	59	0%	98%	100%	3.7%	
Koboko	8	8	100%	140	140	0	1	0	1	0	0	13	0%	101%	0%	0%	
Kole	4	5	80%	52	51	1	1	1	1	0	0	13	0%	100%	100%	1.96%	
Kotido	5	16	31%	73	72	0	1	0	1	0	2	4	0%	100%	0%	0%	
Kumi	7	9	78%	124	130	0	3	0	3	0	0	19	5.26%	107%	0%	0%	
Kyankwanzi	8	12	67%	172	153	6	2	5	2	0	0	16	0%	90%	83%	3.92%	
Kyegegwa	8	9	89%	219	211	4	11	4	11	0	0	41	4.88%	101%	100%	1.9%	
Kyenjojo	18	18	100%	384	371	14	18	14	21	0	0	95	6.32%	101%	130%	3.77%	
Lamwo	6	9	67%	65	64	1	1	1	1	0	0	25	8%	100%	100%	1.56%	
Lira	6	19	32%	98	92	0	6	4	7	0	0	96	5.21%	100%	-200%	0%	

# Ministry of Health Option B+ Weekly Report (3.2)

Week ending 2018-07-22 (2018W29)

District and weekly rate				For Week ending 2018-07-22 (2018W29)									EID November 2015		Analysis		
Level	No of facilities reporting	No of registered facilities	Proportion of facilities reporting (reporting rate)	a. Total ANC1 visits	b. Total No of mothers tested at 1st ANC visit	c. Total No HIV Tested Positive at 1st ANC visit	d. Total No with known HIV+ status by ANC1	e. Total initiating Option B+ at 1st ANC visit	f. Total no on ART treatment by ANC1	h. Has Test Kits stockout	i. Has ARVs stockout	A. Number of EID tests carried out	B. Proportion of EID tests testing positive for HIV	1. Proportion of ANC1 with unknown status tested	2. Proportion of HIV+ women not yet on ART initiated	3. Proportion of women tested positive out of those tested	
Luuka	5	7	71%	103	102	1	3	1	2	0	0	4	0%	102%	50%	0.98%	
Luweero	21	57	37%	320	342	5	12	5	12	1	0	99	2.02%	111%	100%	1.46%	
Lwengo	8	13	62%	125	105	4	10	5	10	1	0	48	6.25%	91%	100%	3.81%	
Lyantonde	1	2	50%	4	2	0	2	0	2	0	0	38	7.89%	100%	0%	0%	
Manafwa	4	12	33%	75	75	1	1	1	0	1	0	8	0%	101%	50%	1.33%	
Maracha	10	10	100%	200	200	1	0	1	0	0	0			100%	100%	0.5%	
Masaka	12	21	57%	100	94	2	7	2	6	1	1	97	3.09%	101%	50%	2.13%	
Masindi	12	14	86%	264	232	3	15	3	15	0	0			93%	100%	1.29%	
Mayuge	10	14	71%	281	235	6	7	7	8	3	0	33	6.06%	86%	200%	2.55%	
Mbale	18	33	55%	286	297	5	7	5	3	0	0	59	1.69%	106%	33%	1.68%	
Mbarara	21	45	47%	334	292	9	23	8	28	0	0	162	4.94%	94%	233%	3.08%	
Mitooma	8	9	89%	105	100	1	5	2	4	0	0	10	0%	100%	100%	1%	
Mityana	20	26	77%	198	184	8	11	9	9	2	2	78	6.41%	98%	90%	4.35%	
Moroto	4	12	33%	44	44	0	0	0	0	0	0	5	0%	100%	0%	0%	
Moyo	14	14	100%	97	94	3	2	1	1	0	0	6	0%	99%	25%	3.19%	
Mpigi	1	2	50%	15	14	1	1	1	1	0	0	67	2.99%	100%	100%	7.14%	
Mubende	19	23	83%	486	416	14	28	14	24	1	0	138	0%	91%	78%	3.37%	
Mukono	5	22	23%	106	95	4	11	4	11	0	0			100%	100%	4.21%	
Nakapiripirit	8	14	57%	75	75	0	0	0	0	0	0	4	0%	100%	0%	0%	
Nakaseke	8	15	53%	176	167	7	8	7	10	0	0	33	3.03%	99%	133%	4.19%	
Nakasongola	12	24	50%	136	129	6	6	4	5	1	0	22	4.55%	99%	78%	4.65%	
Namayingo	6	20	30%	68	40	0	6	0	6	2	1	26	3.85%	65%	0%	0%	
Namisindwa	4	18	22%	69	53	0	0	0	0	2	4			77%	0%	0%	
Namutumba	5	7	71%	142	138	3	4	3	4	0	0			100%	100%	2.17%	
Napak	4	8	50%	75	75	0	0	0	0	0	0	6	0%	100%	0%	0%	
Nebbi	12	12	100%	383	379	6	5	5	6	0	0	40	2.5%	100%	100%	1.58%	
Ngora	6	8	75%	65	63	0	2	1	1	0	0	12	0%	100%	100%	0%	
Ntoroko	1	4	25%	31	24	0	1	0	1	0	0	5	0%	80%	0%	0%	
Ntungamo	16	17	94%	331	294	4	13	4	13	3	0	39	2.56%	92%	100%	1.36%	
Nwoya	4	7	57%	73	70	0	3	0	3	0	0	25	0%	100%	0%	0%	
Omoro	2	6	33%	10	10	0	0	0	0	0	0			100%	0%	0%	
Otuke	5	7	71%	48	46	1	2	1	2	1	0	10	0%	100%	100%	2.17%	

# Ministry of Health Option B+ Weekly Report (3.2)

Week ending 2018-07-22 (2018W29)

District and weekly rate				For Week ending 2018-07-22 (2018W29)									EID November 2015		Analysis		
Level	No of facilities reporting	No of registered facilities	Proportion of facilities reporting (reporting rate)	a. Total ANC1 visits	b. Total No of mothers tested at 1st ANC visit	c. Total No HIV Tested Positive at 1st ANC visit	d. Total No with known HIV+ status by ANC1	e. Total initiating Option B+ at 1st ANC visit	f. Total no on ART treatment by ANC1	h. Has Test Kits stockout	i. Has ARVs stockout	A. Number of EID tests carried out	B. Proportion of EID tests testing positive for HIV	1. Proportion of ANC1 with unknown status tested	2. Proportion of HIV+ women not yet on ART initiated	3. Proportion of women tested positive out of those tested	
Oyam	7	7	100%	204	198	3	6	3	7	1	0	40	0%	100%	150%	1.52%	
Pader	6	11	55%	106	97	4	9	4	8	0	0	50	4%	100%	80%	4.12%	
Pakwach	9	9	100%	180	178	0	2	0	2	0	0			100%	0%	0%	
Pallisa	14	19	74%	260	231	2	1	2	0	1	1	12	0%	89%	67%	0.87%	
Rakai	10	15	67%	104	92	3	3	4	2	0	0	155	3.23%	91%	200%	3.26%	
Rubirizi	7	8	88%	84	87	0	1	0	1	1	0	16	0%	105%	0%	0%	
Rukungiri	17	20	85%	189	172	0	15	0	15	2	0	61	1.64%	99%	0%	0%	
Serere	10	14	71%	123	149	1	1	1	2	0	1	38	7.89%	122%	0%	0.67%	
Sheema	9	9	100%	131	122	4	9	5	8	0	0	51	1.96%	100%	100%	3.28%	
Sironko	14	16	88%	177	173	1	3	1	3	1	0	10	0%	99%	100%	0.58%	
Soroti	16	21	76%	196	187	0	5	0	5	0	1	42	4.76%	98%	0%	0%	
Tororo	20	49	41%	424	389	5	5	5	3	3	4	59	1.69%	93%	71%	1.29%	
Wakiso	56	81	69%	1278	1187	29	85	30	83	0	0	252	4.37%	99%	97%	2.44%	
Yumbe	13	13	100%	314	314	1	1	1	1	0	0	13	7.69%	100%	100%	0.32%	
Zombo	10	11	91%	260	256	2	3	2	3	0	0	23	4.35%	100%	100%	0.78%	

EID data provided by CPHL up to 2015-12-10 cumulative for the entire month of November 2015

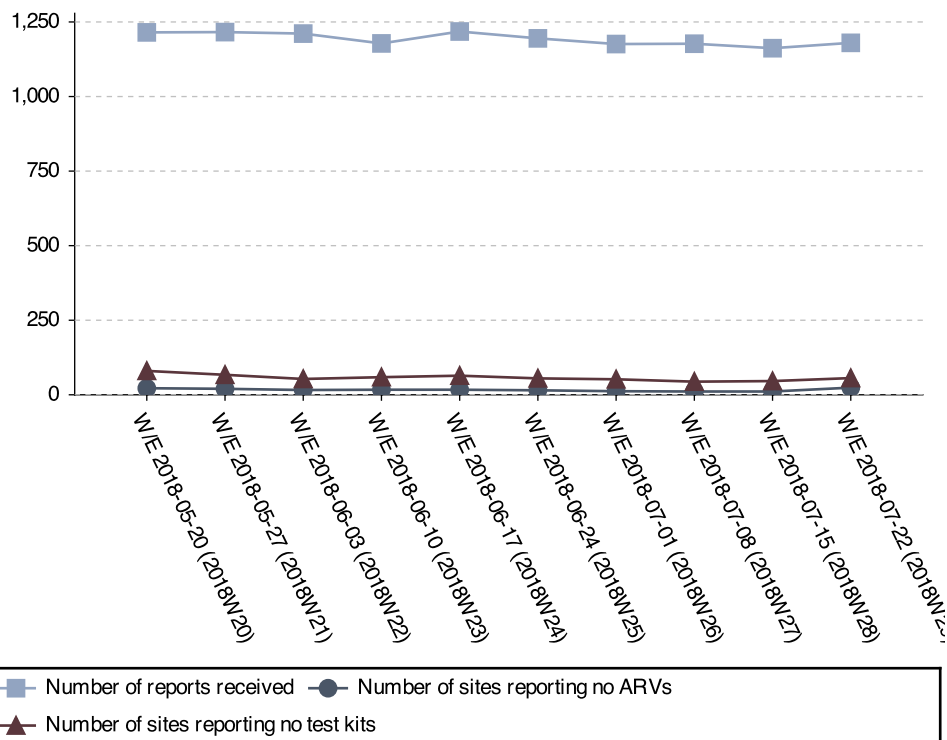
# Ministry of Health Option B+ Weekly Report (3.2)

Week ending 2018-07-22 (2018W29)

## Stock-outs for the last 6 weeks per facility level

	2018W29		2018W28		2018W27		2018W26		2018W25		2018W24	
	ARVs	HIV Test kits	ARVs	HIV Test kits	ARVs	HIV Test kits	ARVs	HIV Test kits	ARVs	HIV Test kits	ARVs	HIV Test kits
Clinic	0	0	0	0	0	0	0	0	0	0	0	0
General Hospital	1	0	1	1	0	1	0	0	1	1	1	2
HC II	3	23	1	20	1	13	0	18	1	19	1	18
HC III	20	37	9	28	9	35	11	34	12	37	14	43
HC IV	0	3	0	1	0	0	1	2	1	1	1	4
NR Hospital	0	0	0	0	0	0	0	0	0	0	0	0
Other/unknown	0	0	0	0	0	0	0	1	0	0	0	0
RR Hospital	0	0	0	0	0	0	0	0	0	0	0	1
<b>Total</b>	<b>24</b>	<b>63</b>	<b>11</b>	<b>50</b>	<b>10</b>	<b>49</b>	<b>12</b>	<b>55</b>	<b>15</b>	<b>58</b>	<b>17</b>	<b>68</b>

## Stock-out trends for the last 10 weeks



## Current stock-outs per IP

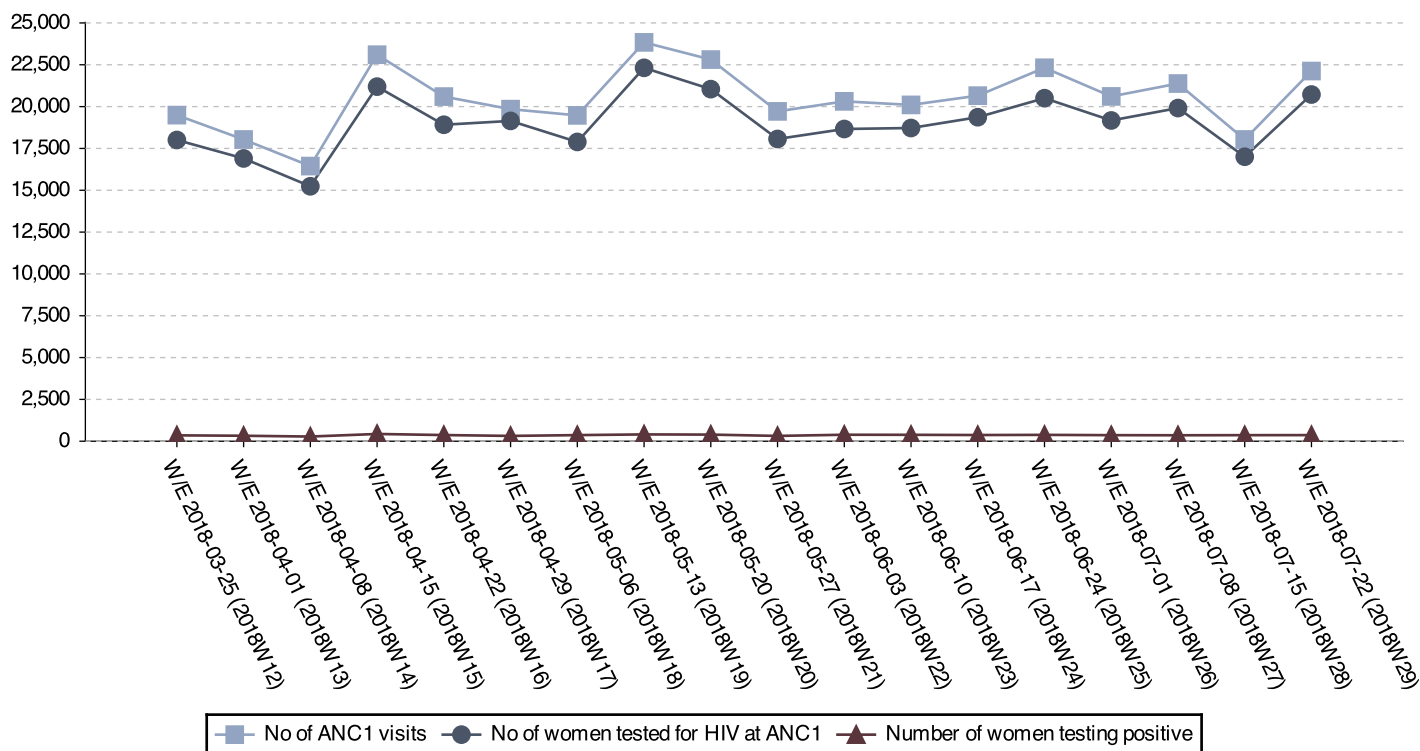
IP	Test kit stockout	ARV stockout
RHITES-SW	14	1
RHITES-E	13	14
RHITES-EC	9	2
TASO	6	8
Walter Reed	4	2
Mildmay	4	2
PREFA	4	1
IDI	3	0
Baylor	3	0
USAID ASSIST	2	0
HIWA	1	0
CUAMM	0	2
TASO Teso	0	2
<b>Total</b>	<b>63</b>	<b>34</b>



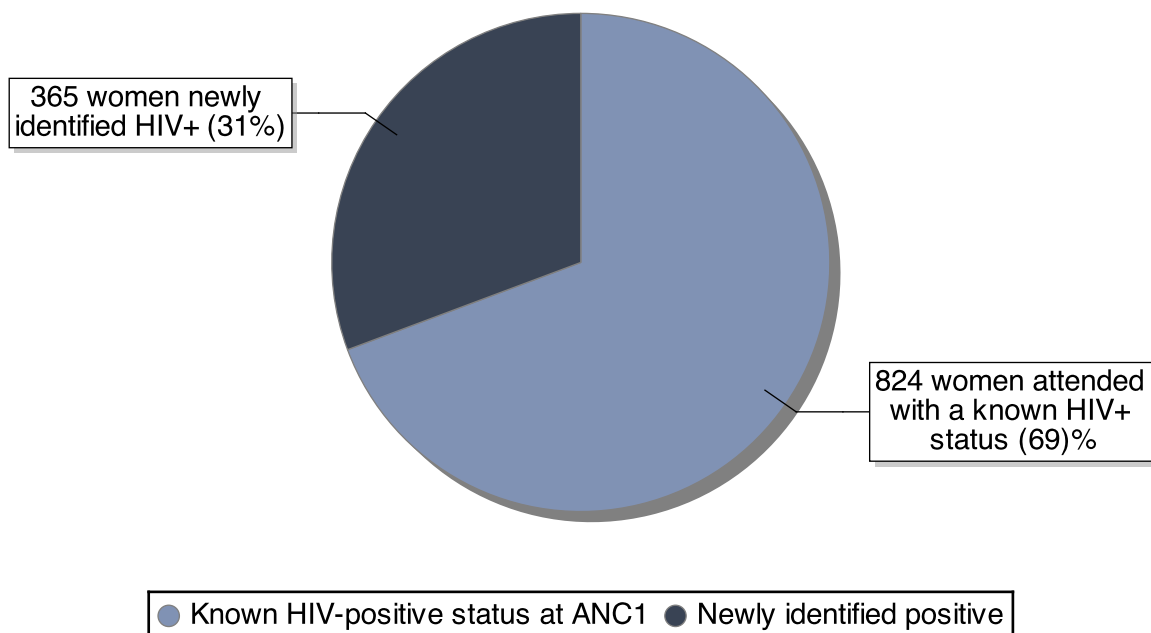
# Ministry of Health Option B+ Weekly Report (3.2)

Week ending 2018-07-22 (2018W29)

### ANC trends for the last 18 weeks



### Break down of existing vs. newly identified infections



Ratio newly identified / already known status: 0.44

# Ministry of Health Option B+ Weekly Report (3.2)

Week ending 2018-07-22 (2018W29)

## District Service Delivery Focus

### High HIV+ EID Testing

This section shows 20 districts with high proportions of HIV+ 1st PCR EID tests. Please consider both the actual number and the proportion.

District	# EID Tests	# Positive	% Positive
Amudat	3	1	33.33
Bududa	5	1	20.00
Buvuma	13	2	15.38
Abim	7	1	14.29
Amolatar	18	2	11.11
Kaberamaido	19	2	10.53
Agago	33	3	9.09
Butaleja	11	1	9.09
Adjumani	11	1	9.09
Kanungu	23	2	8.70
Alebtong	23	2	8.70
Lamwo	25	2	8.00
Lyantonde	38	3	7.89
Serere	38	3	7.89
Yumbe	13	1	7.69
Isingiro	56	4	7.14
Kasese	45	3	6.67
Mityana	78	5	6.41
Kyenjojo	95	6	6.32
Lwengo	48	3	6.25
Mayuge	33	2	6.06
Kabale	53	3	5.66
Dokolo	18	1	5.56
Apac	36	2	5.56
Kumi	19	1	5.26

### Low initiation on ART

This section shows 15 districts with low ART initiation rates. Please consider the actual ART need in addition to the proportion.

District	ART Need	# Initiated	% Initiated
Bududa	2	0	0
Butaleja	1	0	0
Arua District	3	3	0
Moyo District	4	1	25
Mbale District	9	5	33
Alebtong	2	1	50
Ibanda	6	3	50
Luuka District	2	1	50
Manafwa	2	1	50
Masaka	3	2	50
Kisoro	3	2	67
Pallisa	3	2	67
Tororo	7	5	71

## Data Quality challenges by IP

### 'Overtesting'

IPs listed here have 'overtested' – which means that there are issues with data quality. Ensure that facilities have the latest version of the job aide, and that health workers understand that most indicators pertain to ANC1 visits only.

IP	# ANC1 Visits	# Tested	% Tested
RTI	96	125	134
TASO Teso	1053	1087	106
SUSTAIN	540	516	103
UCMB	538	515	102
UPMB	65	62	102
Baylor	1705	1643	101

### 'Overinitiating'

IPs listed here have 'overinitiated' – which means that there are issues with data quality. Ensure that facilities have the latest version of the job aide, and that health workers understand that most indicators pertain to ANC1 visits only.

IP	ART Need	# Initiated	% Initiated
IRCU	2	7	350
USAID PHS	8	11	225
RHSP	4	4	200
MJAP	11	15	162
TASO Teso	4	6	150
Baylor	27	36	135
UCMB	4	5	125
USAID	23	26	118
RHITES-SW	35	35	111
PREFA	30	31	103

None of the proportions mentioned above should exceed 100%, as all proportions relate to ANC1 visits only. They take both women with a known positive status and women already on ART into consideration. Please see <http://reports.dhis2sms.ug> for further details, including detailed facility data.