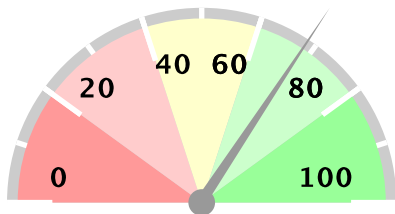


# Ministry of Health Option B+ Weekly Report (3.2)

Week ending 2018-07-15 (2018W28)

## Summary

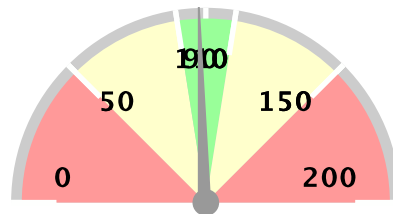
Weekly reporting rate



**69%**

1167 reports received out of 1696 registered facilities

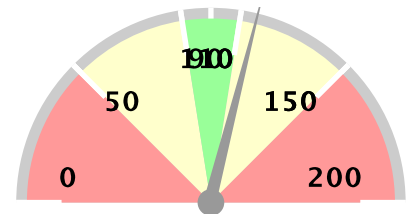
% of ANC1 attendees tested for HIV



**98%**

18173 ANC1 visits

% of women initiated on Option B+



**116%**

420 initiated on ART

### Stockouts and missed appointments

Facilities without ARVs	11	1%
Facilities without test kits	47	4%
Number missed appointments	997	

### 1st PCR EID testing for August 2015\*

Number of EID tests	4936
Number of positive EID tests	169
Proportion testing positive	3.42%

### The week in numbers

Number of reports received this week 1167

Number of facilities registered for B+ 1696

### Testing coverage for this week

Number of ANC 1 visits	18173
No. tested for HIV at ANC 1	94% 17115
No. HIV+ women identified at ANC 1	1068
Newly identified thru testing	34% 366
With a known status	66% 702
Proportion newly tested +ve at ANC 1	2.14%
Proportion of +ve women at ANC 1	5.88%

### ART coverage for this week

Total HIV + Women at ANC 1	1068
Total already on ART	65% 695
Total to be initiated	61% 648
Total no of women initiated on ART	420
Proportion of women initiated on ART	154%
Proportion with known status already on ART	99.00%

This proportion shows how many women who have a known positive status are already on ART

The data as presented in this report using data from MoH/EOC Weekly Reporting and CPHL. PMTCT service delivery data is weekly data, EID testing data is cumulative monthly. EID number includes data up 2013-09-01. Starting from June 2014, EID data contains only 1st PCR tests.

# Ministry of Health Option B+ Weekly Report (3.2)

Week ending 2018-07-15 (2018W28)

## Overall performance per IP

Note: IP data does not add up to national totals due to the fact that IPs overlap in districts. EID data is aggregate for all districts in which an IP operates, and not based on individual facilities supported by an IP.

District and weekly rate				For Week ending 2018-07-15 (2018W28)								EID November 2015		Analysis		
Level	No of facilities reporting	No of registered facilities	Proportion of facilities reporting (reporting rate)	a. Total ANC1 visits	b. Total No of mothers tested at 1st ANC visit	c. Total No HIV Tested Positive at 1st ANC visit	d. Total No with known HIV+ status by ANC1	e. Total initiating Option B+ at 1st ANC visit	f. Total no on ART treatment by ANC1	h. Has Test Kits stockout	i. Has ARVs stockout	A. Number of EID tests carried out	B. Proportion of EID tests testing positive for HIV	1. Proportion of ANC1 with unknown status tested	2. Proportion of HIV+ women not yet on ART initiated	3. Proportion of women tested positive out of those tested
Uganda	1162	1696	69%	18035	17004	362	699	414	691	46	11	4936	3.42%	98%	115%	2.13%
Baylor	104	112	93%	1585	1399	24	85	20	82	6	0	402	4.48%	93%	78%	1.72%
CAF	2	6	33%	2	0	0	2	0	2	0	0	1133	3.09%	0%	0%	N/A
CUAMM	34	63	54%	303	291	1	1	0	0	1	2	29	6.9%	96%	0%	0.34%
HIWA	8	9	89%	67	61	3	5	3	5	1	0	1281	2.65%	98%	100%	4.92%
IDI-KCC	7	7	100%	1018	953	40	63	38	65	0	0	734	2.72%	100%	100%	4.2%
IDI	197	199	99%	3347	3288	35	54	37	56	2	0	330	3.64%	100%	115%	1.06%
IRCU	12	15	80%	293	266	2	8	1	8	0	0	1457	3.09%	93%	50%	0.75%
Kalangala	4	15	27%	5	5	0	0	0	0	0	0	32	0%	100%	0%	0%
Mildmay	120	155	77%	2041	1889	81	115	110	107	4	1	659	3.19%	98%	129%	4.29%
MJAP	16	22	73%	511	460	12	32	10	32	0	0	896	3.12%	96%	83%	2.61%
MRC-UVRI	1	1	100%	3	2	0	1	0	1	0	0	734	2.72%	100%	0%	0%
PREFA	73	106	69%	886	842	38	47	48	45	2	1	567	3.53%	100%	135%	4.51%
Reach Out	4	7	57%	9	7	1	2	1	2	0	0	1085	3.04%	100%	100%	14.29%
RHITES-EC	79	121	65%	1473	1309	17	35	16	34	7	1	279	2.15%	91%	88%	1.3%
RHITES-E	122	161	76%	1812	1697	21	27	20	26	9	6	183	2.19%	95%	100%	1.24%
RHITES-SW	196	215	91%	2127	1987	48	114	88	132	12	1	648	3.55%	99%	276%	2.42%
RHSP	9	15	60%	53	50	4	2	1	2	0	0	155	3.23%	98%	25%	8%
RHU	0	1	0%									64	1.56%	null%	null%	
RTI	11	19	58%	80	85	2	7	2	7	0	0	2002	3.05%	116%	100%	2.35%
SUSTAIN	9	12	75%	460	414	20	28	15	26	0	0	723	2.77%	96%	68%	4.83%
TASO	46	65	71%	633	593	9	31	12	29	2	2	1672	3.11%	99%	120%	1.52%
TASO Teso	69	93	74%	828	862	7	18	6	12	1	1	170	4.71%	106%	42%	0.81%
UCMB	15	18	83%	563	535	8	28	8	27	0	0	1907	2.83%	100%	90%	1.5%
UHMG	6	18	33%	29	25	1	1	1	1	0	0	1232	3.17%	89%	0%	4%
UPMB	8	13	62%	135	127	2	9	2	9	0	0	1399	3.5%	101%	100%	1.57%
USAID ASSIST	72	125	58%	835	839	14	37	13	36	1	0	569	3.69%	105%	87%	1.67%
USAID PHS	27	39	69%	375	344	5	11	4	11	0	0	2064	3.29%	95%	80%	1.45%

# Ministry of Health Option B+ Weekly Report (3.2)

Week ending 2018-07-15 (2018W28)

District and weekly rate			For Week ending 2018-07-15 (2018W28)									EID November 2015		Analysis		
Level	No of facilities reporting	No of registered facilities	Proportion of facilities reporting (reporting rate)	a. Total ANC1 visits	b. Total No of mothers tested at 1st ANC visit	c. Total No HIV Tested Positive at 1st ANC visit	d. Total No with known HIV+ status by ANC1	e. Total initiating Option B+ at 1st ANC visit	f. Total no on ART treatment by ANC1	h. Has Test Kits stockout	i. Has ARVs stockout	A. Number of EID tests carried out	B. Proportion of EID tests testing positive for HIV	1. Proportion of ANC1 with unknown status tested	2. Proportion of HIV+ women not yet on ART initiated	3. Proportion of women tested positive out of those tested
Walter Reed	16	64	25%	201	195	5	6	5	4	1	0	39	5.13%	100%	71%	2.56%

EID data provided by CPHL up to 2015-12-10 cumulative for the entire month of November 2015

## Overall performance per district

Note:

# Ministry of Health Option B+ Weekly Report (3.2)

Week ending 2018-07-15 (2018W28)

District and weekly rate				For Week ending 2018-07-15 (2018W28)									EID November 2015		Analysis		
Level	No of facilities reporting	No of registered facilities	Proportion of facilities reporting (reporting rate)	a. Total ANC1 visits	b. Total No of mothers tested at 1st ANC visit	c. Total No HIV Tested Positive at 1st ANC visit	d. Total No with known HIV+ status by ANC1	e. Total initiating Option B+ at 1st ANC visit	f. Total no on ART treatment by ANC1	h. Has Test Kits stockout	i. Has ARVs stockout	A. Number of EID tests carried out	B. Proportion of EID tests testing positive for HIV	1. Proportion of ANC1 with unknown status tested	2. Proportion of HIV+ women not yet on ART initiated	3. Proportion of women tested positive out of those tested	
Uganda	1162	1696	69%	18035	17004	362	699	414	691	46	11	4936	3.42%	98%	115%	2.13%	
Abim	6	8	75%	43	43	0	0	0	0	0	0	7	14.29%	100%	0%	0%	
Adjumani	11	12	92%	88	62	0	2	1	2	0	0	11	9.09%	72%	0%	0%	
Agago	5	9	56%	83	81	0	2	0	2	0	0	33	9.09%	100%	0%	0%	
Alebong	7	7	100%	107	103	0	1	0	1	1	0	23	8.7%	97%	0%	0%	
Amolatar	4	5	80%	67	65	1	2	1	2	0	0	18	11.11%	100%	100%	1.54%	
Amudat	2	4	50%	29	22	0	0	0	0	0	0	3	33.33%	76%	0%	0%	
Amuria	9	14	64%	102	98	1	4	2	3	0	0	26	0%	100%	100%	1.02%	
Amuru	2	8	25%	24	23	0	1	0	1	0	0	8	0%	100%	0%	0%	
Apac	7	12	58%	128	116	2	6	2	5	0	0	36	5.56%	95%	67%	1.72%	
Arua	41	42	98%	694	687	8	9	8	8	1	0	54	1.85%	100%	73%	1.16%	
Budaka	7	14	50%	134	121	1	4	0	3	0	0	7	0%	93%	0%	0.83%	
Bududa	7	8	88%	65	53	0	0	0	0	1	0	5	20%	82%	0%	0%	
Bugiri	9	15	60%	168	162	1	4	1	4	0	0	38	2.63%	99%	100%	0.62%	
Buhweju	6	6	100%	46	44	1	0	1	1	1	0	5	0%	96%	100%	2.27%	
Buikwe	9	32	28%	157	149	6	8	5	8	0	0			100%	83%	4.03%	
Bukedea	4	8	50%	66	68	0	0	0	0	0	0	14	0%	103%	0%	0%	
Bukwo	5	5	100%	38	29	0	0	0	0	1	1			76%	0%	0%	
Buliisa	8	8	100%	157	156	2	1	2	1	1	0	9	0%	100%	100%	1.28%	
Bundibugyo	10	11	91%	124	120	1	3	1	3	1	0	4	0%	99%	100%	0.83%	
Bushenyi	14	18	78%	99	85	2	12	2	12	0	0	64	1.56%	98%	100%	2.35%	
Busia	9	12	75%	218	212	5	4	4	5	0	0	29	0%	99%	100%	2.36%	
Butaleja	10	13	77%	195	184	1	0	1	0	1	0	11	9.09%	94%	100%	0.54%	
Buvuma	2	10	20%	22	22	0	0	0	0	0	0	13	15.38%	100%	0%	0%	
Buyende	4	9	44%	148	129	0	1	0	1	0	0			88%	0%	0%	
Dokolo	5	5	100%	55	54	1	1	1	1	0	0	18	5.56%	100%	100%	1.85%	
Gulu	9	14	64%	153	133	1	18	1	18	0	0	115	1.74%	99%	0%	0.75%	
Hoima	25	26	96%	517	495	17	14	17	16	0	0	78	3.85%	98%	117%	3.43%	
Ibanda	9	10	90%	149	136	3	13	4	13	0	0	31	0%	100%	133%	2.21%	
Iganga	10	17	59%	178	150	0	5	0	4	2	1	47	2.13%	87%	0%	0%	
Isingiro	22	26	85%	272	257	4	10	5	10	4	0	56	7.14%	98%	125%	1.56%	
Jinja	11	23	48%	172	170	2	2	2	1	0	0	83	3.61%	100%	67%	1.18%	

# Ministry of Health Option B+ Weekly Report (3.2)

Week ending 2018-07-15 (2018W28)

District and weekly rate				For Week ending 2018-07-15 (2018W28)									EID null		Analysis		
Level	No of facilities reporting	No of registered facilities	Proportion of facilities reporting (reporting rate)	a. Total ANC1 visits	b. Total No of mothers tested at 1st ANC visit	c. Total No HIV Tested Positive at 1st ANC visit	d. Total No with known HIV+ status by ANC1	e. Total initiating Option B+ at 1st ANC visit	f. Total no on ART treatment by ANC1	h. Has Test Kits stockout	i. Has ARVs stockout	A. Number of EID tests carried out	B. Proportion of EID tests testing positive for HIV	1. Proportion of ANC1 with unknown status tested	2. Proportion of HIV+ women not yet on ART initiated	3. Proportion of women tested positive out of those tested	
Kaabong	6	13	46%	48	48	0	0	0	0	0	0			100%	0%	0%	
Kabale	27	27	100%	201	195	1	9	1	9	0	0	53	5.66%	102%	100%	0.51%	
Kabarole	20	25	80%	184	156	1	25	1	25	1	0	154	3.25%	98%	100%	0.64%	
Kaberamaido	8	12	67%	128	126	1	3	1	2	0	0	19	10.53%	101%	50%	0.79%	
Kagadi	11	11	100%	361	346	5	12	5	12	0	0			99%	100%	1.45%	
Kakumiro	8	8	100%	202	199	2	4	2	4	0	0			101%	100%	1.01%	
Kalangala	4	15	27%	5	5	0	0	0	0	0	0	32	0%	100%	0%	0%	
Kaliro	5	6	83%	109	109	2	1	2	2	0	0	9	0%	101%	200%	1.83%	
Kalungu	10	16	62%	72	62	2	3	3	3	0	0	49	0%	90%	150%	3.23%	
Kampala	26	40	65%	1656	1561	49	87	46	88	0	0	734	2.72%	99%	96%	3.14%	
Kamuli	16	17	94%	274	245	2	6	2	7	0	0	29	0%	91%	200%	0.82%	
Kamwenge	15	15	100%	237	214	8	19	5	17	0	0	58	3.45%	98%	50%	3.74%	
Kanungu	15	17	88%	141	134	0	6	0	6	1	1	23	8.7%	99%	0%	0%	
Kasese	37	40	92%	535	492	2	5	2	7	1	0	45	6.67%	93%	0%	0.41%	
Katakwi	11	12	92%	96	91	1	6	0	3	0	0			101%	0%	1.1%	
Kayunga	3	11	27%	75	75	1	0	1	0	0	0	26	0%	100%	100%	1.33%	
Kibaale	6	6	100%	122	121	1	2	1	2	0	0	59	5.08%	101%	100%	0.83%	
Kiboga	8	8	100%	125	117	8	10	8	10	0	0	21	4.76%	102%	100%	6.84%	
Kibuku	10	11	91%	151	119	0	1	0	1	2	1	3	0%	79%	0%	0%	
Kiruhura	19	21	90%	169	171	7	7	6	8	1	0	51	3.92%	106%	120%	4.09%	
Kiryandongo	11	11	100%	238	235	3	3	3	3	0	0	24	4.17%	100%	100%	1.28%	
Kisoro	20	20	100%	259	244	2	2	2	3	3	0	26	0%	95%	200%	0.82%	
Kitgum	8	12	67%	50	46	2	3	2	3	0	0	59	0%	98%	100%	4.35%	
Koboko	8	8	100%	126	124	1	1	1	1	0	0	13	0%	99%	0%	0.81%	
Kole	3	5	60%	42	41	1	1	1	1	0	0	13	0%	100%	100%	2.44%	
Kotido	6	16	38%	40	40	0	0	0	0	0	2	4	0%	100%	0%	0%	
Kumi	6	9	67%	91	98	0	1	0	1	0	0	19	5.26%	109%	0%	0%	
Kyankwanzi	6	12	50%	125	96	1	2	1	2	1	0	16	0%	78%	0%	1.04%	
Kyegegwa	9	9	100%	227	153	7	11	7	8	1	0	41	4.88%	71%	88%	4.58%	
Kyenjojo	18	18	100%	322	308	6	21	5	21	2	0	95	6.32%	102%	75%	1.95%	
Lamwo	7	9	78%	41	45	1	3	1	3	0	0	25	8%	118%	100%	2.22%	
Lira	4	19	21%	66	108	2	2	1	2	0	0	96	5.21%	169%	50%	1.85%	

# Ministry of Health Option B+ Weekly Report (3.2)

Week ending 2018-07-15 (2018W28)

District and weekly rate				For Week ending 2018-07-15 (2018W28)									EID November 2015		Analysis		
Level	No of facilities reporting	No of registered facilities	Proportion of facilities reporting (reporting rate)	a. Total ANC1 visits	b. Total No of mothers tested at 1st ANC visit	c. Total No HIV Tested Positive at 1st ANC visit	d. Total No with known HIV+ status by ANC1	e. Total initiating Option B+ at 1st ANC visit	f. Total no on ART treatment by ANC1	h. Has Test Kits stockout	i. Has ARVs stockout	A. Number of EID tests carried out	B. Proportion of EID tests testing positive for HIV	1. Proportion of ANC1 with unknown status tested	2. Proportion of HIV+ women not yet on ART initiated	3. Proportion of women tested positive out of those tested	
Luuka	6	7	86%	57	55	1	2	1	2	0	0	4	0%	100%	100%	1.82%	
Luweero	21	57	37%	302	303	11	14	22	15	1	0	99	2.02%	105%	233%	3.63%	
Lwengo	6	13	46%	70	69	4	2	5	2	0	0	48	6.25%	101%	100%	5.8%	
Lyantonde	1	2	50%	3	3	0	0	0	0	0	0	38	7.89%	100%	0%	0%	
Manafwa	5	12	42%	59	59	0	3	0	3	0	0	8	0%	105%	0%	0%	
Maracha	10	10	100%	157	156	0	0	0	0	0	0			99%	0%	0%	
Masaka	15	21	71%	95	81	4	14	2	13	1	1	97	3.09%	100%	33%	4.94%	
Masindi	12	14	86%	234	231	7	9	9	7	0	0			103%	100%	3.03%	
Mayuge	8	14	57%	150	80	3	4	3	2	4	0	33	6.06%	55%	50%	3.75%	
Mbale	21	33	64%	310	294	8	10	7	10	1	0	59	1.69%	98%	88%	2.72%	
Mbarara	18	45	40%	271	240	8	22	7	22	0	0	162	4.94%	96%	86%	3.33%	
Mitooma	9	9	100%	64	58	2	8	2	9	0	0	10	0%	104%	200%	3.45%	
Mityana	19	26	73%	175	157	4	11	5	11	1	0	78	6.41%	96%	125%	2.55%	
Moroto	2	12	17%	2	2	0	0	0	0	0	0	5	0%	100%	0%	0%	
Moyo	14	14	100%	70	70	0	0	0	0	0	0	6	0%	100%	0%	0%	
Mpigi	1	2	50%	38	35	1	3	1	3	0	0	67	2.99%	100%	100%	2.86%	
Mubende	15	23	65%	332	291	21	37	36	26	0	0	138	0%	99%	112%	7.22%	
Mukono	5	22	23%	66	63	2	3	2	1	1	0			100%	50%	3.17%	
Nakapiripirit	9	14	64%	90	85	0	0	0	0	1	0	4	0%	94%	0%	0%	
Nakaseke	10	15	67%	148	138	9	8	9	8	0	0	33	3.03%	99%	100%	6.52%	
Nakasongola	12	24	50%	147	141	7	6	6	4	0	0	22	4.55%	100%	67%	4.96%	
Namayingo	7	20	35%	71	54	2	3	2	3	1	0	26	3.85%	79%	100%	3.7%	
Namisindwa	6	18	33%	51	37	0	0	1	0	0	2			73%	0%	0%	
Namutumba	5	7	71%	120	115	1	3	1	3	0	0			98%	100%	0.87%	
Napak	4	8	50%	62	62	1	1	0	0	0	0	6	0%	102%	0%	1.61%	
Nebbi	12	12	100%	193	188	4	9	4	9	0	0	40	2.5%	102%	100%	2.13%	
Ngora	6	8	75%	84	85	0	0	0	0	0	0	12	0%	101%	0%	0%	
Ntoroko	2	4	50%	33	29	0	4	0	4	0	0	5	0%	100%	0%	0%	
Ntungamo	16	17	94%	265	245	9	15	55	28	1	0	39	2.56%	98%	-1080%	3.67%	
Nwoya	4	7	57%	61	54	1	7	1	7	0	0	25	0%	100%	100%	1.85%	
Omoro	1	6	17%	0	0	0	0	0	0	0	0			0%	0%	N/A	
Otuke	5	7	71%	56	53	0	3	0	3	0	0	10	0%	100%	0%	0%	

# Ministry of Health Option B+ Weekly Report (3.2)

Week ending 2018-07-15 (2018W28)

District and weekly rate				For Week ending 2018-07-15 (2018W28)									EID November 2015		Analysis		
Level	No of facilities reporting	No of registered facilities	Proportion of facilities reporting (reporting rate)	a. Total ANC1 visits	b. Total No of mothers tested at 1st ANC visit	c. Total No HIV Tested Positive at 1st ANC visit	d. Total No with known HIV+ status by ANC1	e. Total initiating Option B+ at 1st ANC visit	f. Total no on ART treatment by ANC1	h. Has Test Kits stockout	i. Has ARVs stockout	A. Number of EID tests carried out	B. Proportion of EID tests testing positive for HIV	1. Proportion of ANC1 with unknown status tested	2. Proportion of HIV+ women not yet on ART initiated	3. Proportion of women tested positive out of those tested	
Oyam	3	7	43%	88	82	2	6	2	6	0	0	40	0%	100%	100%	2.44%	
Pader	6	11	55%	42	34	1	8	1	8	0	0	50	4%	100%	100%	2.94%	
Pakwach	9	9	100%	169	182	2	7	2	7	0	0			112%	100%	1.1%	
Pallisa	16	19	84%	331	330	1	3	1	2	1	0	12	0%	101%	50%	0.3%	
Rakai	9	15	60%	53	50	4	2	1	2	0	0	155	3.23%	98%	25%	8%	
Rubirizi	7	8	88%	52	47	7	1	1	5	1	0	16	0%	92%	0%	14.89%	
Rukungiri	18	20	90%	179	168	1	9	1	6	1	0	61	1.64%	99%	25%	0.6%	
Serere	11	14	79%	141	177	2	2	1	1	1	1	38	7.89%	127%	33%	1.13%	
Sheema	8	9	89%	85	79	2	6	2	6	0	0	51	1.96%	100%	100%	2.53%	
Sironko	15	16	94%	174	173	5	1	5	1	0	0	10	0%	100%	100%	2.89%	
Soroti	17	21	81%	160	155	2	8	2	8	0	0	42	4.76%	102%	100%	1.29%	
Tororo	18	49	37%	276	270	5	5	5	6	2	0	59	1.69%	100%	125%	1.85%	
Wakiso	56	81	69%	1046	987	37	54	36	54	1	1	252	4.37%	99%	97%	3.75%	
Yumbe	12	13	92%	222	221	1	1	1	1	0	0	13	7.69%	100%	100%	0.45%	
Zombo	10	11	91%	165	163	1	2	1	4	0	0	23	4.35%	100%	-100%	0.61%	

EID data provided by CPHL up to 2015-12-10 cumulative for the entire month of November 2015

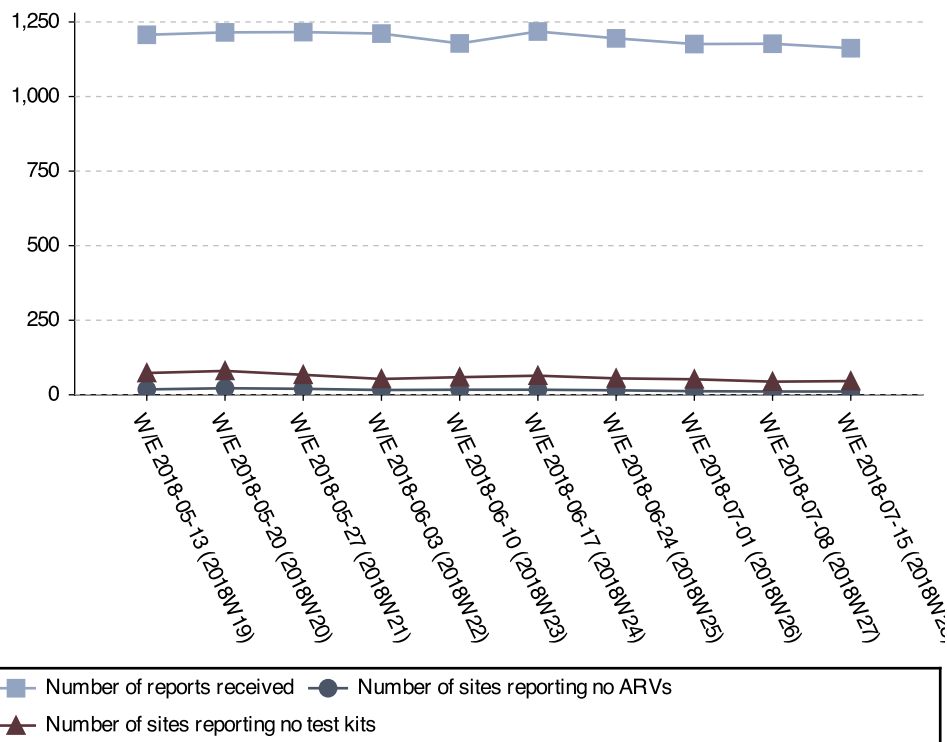
# Ministry of Health Option B+ Weekly Report (3.2)

Week ending 2018-07-15 (2018W28)

## Stock-outs for the last 6 weeks per facility level

	2018W28		2018W27		2018W26		2018W25		2018W24		2018W23	
	ARVs	HIV Test kits	ARVs	HIV Test kits	ARVs	HIV Test kits	ARVs	HIV Test kits	ARVs	HIV Test kits	ARVs	HIV Test kits
Clinic	0	0	0	0	0	0	0	0	0	0	0	0
General Hospital	1	1	0	1	0	0	1	1	1	2	1	2
HC II	1	20	1	13	0	18	1	19	1	18	2	19
HC III	9	28	9	35	11	34	12	37	14	43	12	38
HC IV	0	1	0	0	1	2	1	1	1	4	2	2
NR Hospital	0	0	0	0	0	0	0	0	0	0	0	0
Other/unknown	0	0	0	0	0	1	0	0	0	0	0	0
RR Hospital	0	0	0	0	0	0	0	0	0	1	0	0
<b>Total</b>	<b>11</b>	<b>50</b>	<b>10</b>	<b>49</b>	<b>12</b>	<b>55</b>	<b>15</b>	<b>58</b>	<b>17</b>	<b>68</b>	<b>17</b>	<b>61</b>

## Stock-out trends for the last 10 weeks



## Current stock-outs per IP

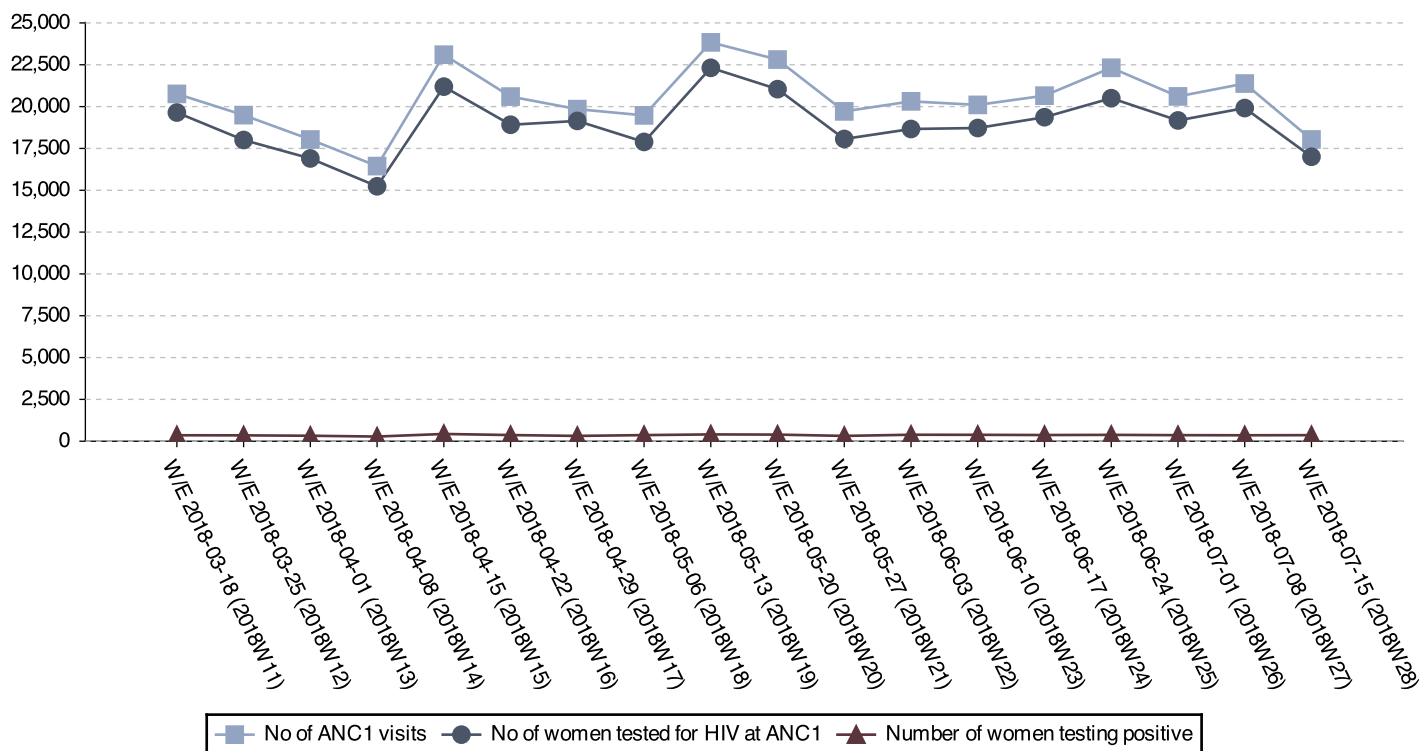
IP	Test kit stockout	ARV stockout
RHITES-SW	12	1
RHITES-E	9	6
RHITES-EC	7	1
Baylor	6	0
Mildmay	4	1
TASO	2	2
PREFA	2	1
IDI	2	0
USAID ASSIST	1	0
Walter Reed	1	0
HIWA	1	0
CUAMM	1	2
TASO Teso	1	1
<b>Total</b>	<b>49</b>	<b>15</b>



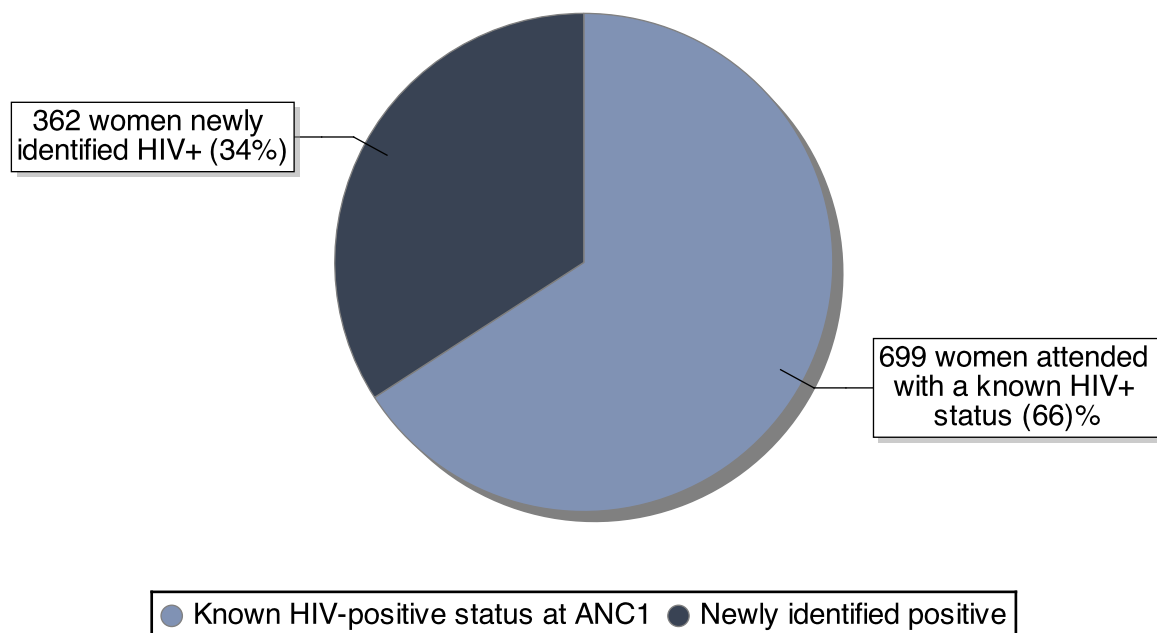
# Ministry of Health Option B+ Weekly Report (3.2)

Week ending 2018-07-15 (2018W28)

ANC trends for the last 18 weeks



Break down of existing vs. newly identified infections



Ratio newly identified / already known status: 0.52

# Ministry of Health Option B+ Weekly Report (3.2)

Week ending 2018-07-15 (2018W28)

## District Service Delivery Focus

### High HIV+ EID Testing

This section shows 20 districts with high proportions of HIV+ 1st PCR EID tests. Please consider both the actual number and the proportion.

District	# EID Tests	# Positive	% Positive
Amudat	3	1	33.33
Bududa	5	1	20.00
Buvuma	13	2	15.38
Abim	7	1	14.29
Amolatar	18	2	11.11
Kaberamaido	19	2	10.53
Butaleja	11	1	9.09
Agago	33	3	9.09
Adjumani	11	1	9.09
Kanungu	23	2	8.70
Alebtong	23	2	8.70
Lamwo	25	2	8.00
Serere	38	3	7.89
Lyantonde	38	3	7.89
Yumbe	13	1	7.69
Isingiro	56	4	7.14
Kasese	45	3	6.67
Mityana	78	5	6.41
Kyenjojo	95	6	6.32
Lwengo	48	3	6.25
Mayuge	33	2	6.06
Kabale	53	3	5.66
Dokolo	18	1	5.56
Apac	36	2	5.56
Kumi	19	1	5.26

### Low initiation on ART

This section shows 15 districts with low ART initiation rates. Please consider the actual ART need in addition to the proportion.

District	ART Need	# Initiated	% Initiated
Kyankwanzi	1	1	0
Iganga	1	0	0
Rubirizi	3	1	0
Katakwi	4	0	0
Gulu District	1	1	0
Budaka	2	0	0
Napak	2	0	0
Koboko	1	1	0
Rakai District	4	1	25
Rukungiri	4	1	25
Masaka	5	2	33
Serere	3	1	33
Kaberamaido	2	1	50
Kamwenge	10	5	50
Lira District	2	1	50

## Data Quality challenges by IP

### 'Overtesting'

IPs listed here have 'overtested' – which means that there are issues with data quality. Ensure that facilities have the latest version of the job aide, and that health workers understand that most indicators pertain to ANC1 visits only.

IP	# ANC1 Visits	# Tested	% Tested
RTI	80	85	116
TASO Teso	828	862	106
USAID	835	839	105
UPMB	135	127	101

### 'Overinitiating'

IPs listed here have 'overinitiated' – which means that there are issues with data quality. Ensure that facilities have the latest version of the job aide, and that health workers understand that most indicators pertain to ANC1 visits only.

IP	ART Need	# Initiated	% Initiated
RHITES-SW	30	88	276
PREFA	40	48	135
Mildmay	89	110	129
TASO	11	12	120
IDI	33	37	115

None of the proportions mentioned above should exceed 100%, as all proportions relate to ANC1 visits only. They take both women with a known positive status and women already on ART into consideration. Please see <http://reports.dhis2sms.ug> for further details, including detailed facility data.