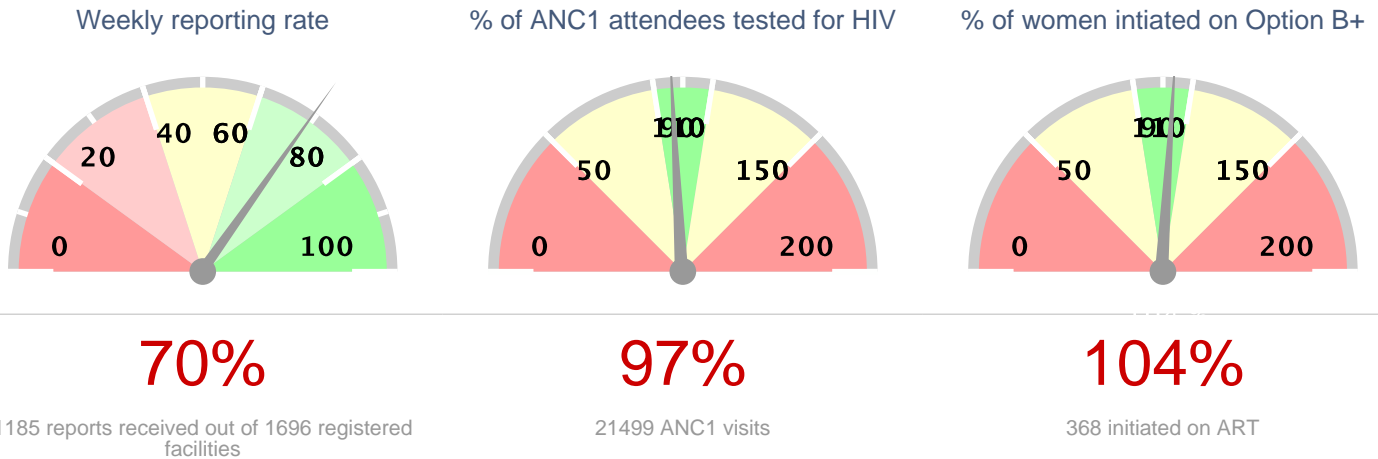


Ministry of Health Option B+ Weekly Report (3.2)

Week ending 2018-07-08 (2018W27)

Summary



Stockouts and missed appointments

Facilities without ARVs	10	1%
Facilities without test kits	44	4%
Number missed appointments	1069	

1st PCR EID testing for August 2015*

Number of EID tests	4936
Number of positive EID tests	169
Proportion testing positive	3.42%

The week in numbers

Number of reports received this week: 1185

Number of facilities registered for B+: 1696

Testing coverage for this week

Number of ANC 1 visits	21499
No. tested for HIV at ANC 1	93% 20032
No. HIV+ women identified at ANC 1	1219
Newly identified thru testing	30% 361
With a known status	70% 858
Proportion newly tested +ve at ANC 1	1.80%
Proportion of +ve women at ANC 1	5.67%

ART coverage for this week

Total HIV + Women at ANC 1	1219
Total already on ART	71% 866
Total to be initiated	70% 851
Total no of women initiated on ART	368
Proportion of women initiated on ART	231%
Proportion with known status already on ART	100.93%

This proportion shows how many women who have a known positive status are already on ART

The data as presented in this report using data from MoH/EOC Weekly Reporting and CPHL. PMTCT service delivery data is weekly data, EID testing data is cumulative monthly. EID number includes data up 2013-09-01. Starting from June 2014, EID data contains only 1st PCR tests.

Ministry of Health Option B+ Weekly Report (3.2)

Week ending 2018-07-08 (2018W27)

Overall performance per IP

Note: IP data does not add up to national totals due to the fact that IPs overlap in districts. EID data is aggregate for all districts in which an IP operates, and not based on individual facilities supported by an IP.

District and weekly rate				For Week ending 2018-07-08 (2018W27)								EID November 2015		Analysis		
Level	No of facilities reporting	No of registered facilities	Proportion of facilities reporting (reporting rate)	a. Total ANC1 visits	b. Total No of mothers tested at 1st ANC visit	c. Total No HIV Tested Positive at 1st ANC visit	d. Total No with known HIV+ status by ANC1	e. Total initiating Option B+ at 1st ANC visit	f. Total no on ART treatment by ANC1	h. Has Test Kits stockout	i. Has ARVs stockout	A. Number of EID tests carried out	B. Proportion of EID tests testing positive for HIV	1. Proportion of ANC1 with unknown status tested	2. Proportion of HIV+ women not yet on ART initiated	3. Proportion of women tested positive out of those tested
Uganda	1177	1696	69%	21379	19913	356	855	363	863	44	11	4936	3.42%	97%	105%	1.79%
Baylor	102	112	91%	1826	1589	35	75	38	77	6	0	402	4.48%	91%	121%	2.2%
CAF	2	6	33%	6	3	0	3	0	3	0	0	1133	3.09%	100%	0%	0%
CUAMM	30	63	48%	395	392	1	3	1	3	0	2	29	6.9%	100%	100%	0.26%
HIWA	7	9	78%	67	63	3	1	2	1	1	0	1281	2.65%	95%	67%	4.76%
IDI-KCC	7	7	100%	1193	1113	29	69	27	72	0	0	734	2.72%	99%	104%	2.61%
IDI	196	199	98%	3792	3667	39	80	39	82	3	1	330	3.64%	99%	114%	1.06%
IRCU	13	15	87%	442	430	9	15	8	13	0	0	1457	3.09%	101%	74%	2.09%
Kalangala	4	15	27%	7	5	0	2	0	2	0	0	32	0%	100%	0%	0%
Mildmay	121	155	78%	2423	2260	62	141	78	137	4	2	659	3.19%	99%	119%	2.74%
MJAP	16	22	73%	560	501	14	28	14	27	0	0	896	3.12%	94%	92%	2.79%
MRC-UVRI	1	1	100%	7	5	0	2	0	2	0	0	734	2.72%	100%	0%	0%
PREFA	77	106	73%	994	923	20	58	18	58	2	1	567	3.53%	99%	95%	2.17%
Reach Out	5	7	71%	16	7	6	8	1	12	0	0	1085	3.04%	88%	50%	85.71%
RHITES-EC	81	121	67%	1819	1595	22	49	21	45	5	1	279	2.15%	90%	81%	1.38%
RHITES-E	124	161	77%	2050	1916	11	42	12	40	13	4	183	2.19%	95%	100%	0.57%
RHITES-SW	200	215	93%	2605	2416	54	138	52	146	10	1	648	3.55%	98%	109%	2.24%
RHSP	10	15	67%	97	92	0	4	0	4	0	0	155	3.23%	99%	0%	0%
RHU	0	1	0%									64	1.56%	null%	null%	
RTI	11	19	58%	82	89	3	1	3	1	0	0	2002	3.05%	110%	100%	3.37%
SUSTAIN	10	12	83%	553	505	18	50	19	49	0	0	723	2.77%	100%	100%	3.56%
TASO	48	65	74%	830	764	11	40	11	39	3	0	1672	3.11%	97%	92%	1.44%
TASO Teso	68	93	73%	920	947	8	24	6	24	1	1	170	4.71%	106%	75%	0.84%
UCMB	15	18	83%	648	624	12	23	12	29	0	0	1907	2.83%	100%	175%	1.92%
UHMG	6	18	33%	39	37	0	2	0	2	0	0	1232	3.17%	100%	0%	0%
UPMB	6	13	46%	90	84	0	9	0	9	0	0	1399	3.5%	104%	0%	0%
USAID ASSIST	78	125	62%	1051	956	20	48	21	47	0	0	569	3.69%	95%	95%	2.09%
USAID PHS	30	39	77%	570	554	10	18	9	17	0	0	2064	3.29%	100%	79%	1.81%

Ministry of Health Option B+ Weekly Report (3.2)

Week ending 2018-07-08 (2018W27)

District and weekly rate			For Week ending 2018-07-08 (2018W27)									EID November 2015		Analysis		
Level	No of facilities reporting	No of registered facilities Proportion of facilities reporting (reporting rate)	a. Total ANC1 visits	b. Total No of mothers tested at 1st ANC visit	c. Total No HIV Tested Positive at 1st ANC visit	d. Total No with known HIV+ status by ANC1	e. Total initiating Option B+ at 1st ANC visit	f. Total no on ART treatment by ANC1	h. Has Test Kits stockout	i. Has ARVs stockout	A. Number of EID tests carried out	B. Proportion of EID tests testing positive for HIV	1. Proportion of ANC1 with unknown status tested	2. Proportion of HIV+ women not yet on ART initiated	3. Proportion of women tested positive out of those tested	
Walter Reed	16	64 25%	282	233	5	11	5	9	1	0	39	5.13%	86%	71%	2.15%	

EID data provided by CPHL up to 2015-12-10 cumulative for the entire month of November 2015

Overall performance per district

Note:

Ministry of Health Option B+ Weekly Report (3.2)

Week ending 2018-07-08 (2018W27)

District and weekly rate				For Week ending 2018-07-08 (2018W27)									EID November 2015		Analysis		
Level	No of facilities reporting	No of registered facilities	Proportion of facilities reporting (reporting rate)	a. Total ANC1 visits	b. Total No of mothers tested at 1st ANC visit	c. Total No HIV Tested Positive at 1st ANC visit	d. Total No with known HIV+ status by ANC1	e. Total initiating Option B+ at 1st ANC visit	f. Total no on ART treatment by ANC1	h. Has Test Kits stockout	i. Has ARVs stockout	A. Number of EID tests carried out	B. Proportion of EID tests testing positive for HIV	1. Proportion of ANC1 with unknown status tested	2. Proportion of HIV+ women not yet on ART initiated	3. Proportion of women tested positive out of those tested	
Uganda	1177	1696	69%	21379	19913	356	855	363	863	44	11	4936	3.42%	97%	105%	1.79%	
Abim	3	8	38%	16	16	0	0	0	0	0	0	7	14.29%	100%	0%	0%	
Adjumani	12	12	100%	114	113	1	2	1	2	0	0	11	9.09%	101%	100%	0.88%	
Agago	5	9	56%	99	96	1	1	1	1	0	0	33	9.09%	98%	100%	1.04%	
Alebtong	5	7	71%	108	80	1	5	2	5	0	0	23	8.7%	78%	0%	1.25%	
Amolatar	3	5	60%	69	64	3	5	3	5	0	0	18	11.11%	100%	100%	4.69%	
Amudat	1	4	25%	35	35	0	0	0	0	0	0	3	33.33%	100%	0%	0%	
Amuria	11	14	79%	175	176	2	8	1	8	0	0	26	0%	105%	50%	1.14%	
Amuru	2	8	25%	30	29	0	1	0	1	0	0	8	0%	100%	0%	0%	
Apac	7	12	58%	127	118	4	8	4	8	0	0	36	5.56%	99%	100%	3.39%	
Arua	39	42	93%	657	645	3	9	2	9	1	0	54	1.85%	100%	40%	0.47%	
Budaka	7	14	50%	114	112	1	2	1	2	1	0	7	0%	100%	100%	0.89%	
Bududa	6	8	75%	65	64	1	1	1	1	0	0	5	20%	100%	100%	1.56%	
Bugiri	10	15	67%	232	219	3	11	2	10	0	0	38	2.63%	99%	67%	1.37%	
Buhweju	6	6	100%	54	50	0	2	0	2	1	0	5	0%	96%	0%	0%	
Buikwe	10	32	31%	175	167	8	7	6	7	0	0			99%	75%	4.79%	
Bukedea	5	8	62%	119	124	1	2	0	2	0	0	14	0%	106%	0%	0.81%	
Bukwo	5	5	100%	60	55	0	2	0	2	1	0			95%	0%	0%	
Buliisa	8	8	100%	127	120	1	7	1	7	0	0	9	0%	100%	100%	0.83%	
Bundibugyo	10	11	91%	167	153	1	1	1	1	2	0	4	0%	92%	100%	0.65%	
Bushenyi	14	18	78%	143	130	4	11	4	11	0	0	64	1.56%	98%	100%	3.08%	
Busia	8	12	67%	197	195	4	3	4	3	0	0	29	0%	101%	100%	2.05%	
Butaleja	11	13	85%	204	189	0	3	0	2	1	0	11	9.09%	94%	0%	0%	
Buvuma	1	10	10%	11	11	0	0	0	0	0	0	13	15.38%	100%	0%	0%	
Buyende	5	9	56%	137	132	3	2	3	2	0	0			98%	100%	2.27%	
Dokolo	5	5	100%	52	48	2	3	2	3	0	0	18	5.56%	98%	100%	4.17%	
Gulu	9	14	64%	177	159	6	17	8	17	0	0	115	1.74%	99%	133%	3.77%	
Hoima	24	26	92%	596	569	8	25	8	26	0	0	78	3.85%	100%	100%	1.41%	
Ibanda	10	10	100%	183	176	5	4	4	4	0	0	31	0%	98%	80%	2.84%	
Iganga	11	17	65%	212	143	2	5	2	5	3	1	47	2.13%	69%	100%	1.4%	
Isingiro	26	26	100%	367	340	6	19	5	18	1	0	56	7.14%	98%	71%	1.76%	
Jinja	15	23	65%	249	240	2	9	2	9	0	0	83	3.61%	100%	100%	0.83%	

Ministry of Health Option B+ Weekly Report (3.2)

Week ending 2018-07-08 (2018W27)

District and weekly rate				For Week ending 2018-07-08 (2018W27)									EID null		Analysis		
Level	No of facilities reporting	No of registered facilities	Proportion of facilities reporting (reporting rate)	a. Total ANC1 visits	b. Total No of mothers tested at 1st ANC visit	c. Total No HIV Tested Positive at 1st ANC visit	d. Total No with known HIV+ status by ANC1	e. Total initiating Option B+ at 1st ANC visit	f. Total no on ART treatment by ANC1	h. Has Test Kits stockout	i. Has ARVs stockout	A. Number of EID tests carried out	B. Proportion of EID tests testing positive for HIV	1. Proportion of ANC1 with unknown status tested	2. Proportion of HIV+ women not yet on ART initiated	3. Proportion of women tested positive out of those tested	
Kaabong	5	13	38%	47	47	1	0	1	0	0	0			100%	100%	2.13%	
Kabale	27	27	100%	240	232	1	6	1	6	0	0	53	5.66%	99%	100%	0.43%	
Kabarole	23	25	92%	298	247	8	31	7	31	1	0	154	3.25%	93%	88%	3.24%	
Kaberamaido	8	12	67%	87	86	1	1	1	1	0	0	19	10.53%	100%	100%	1.16%	
Kagadi	11	11	100%	377	318	5	18	5	18	2	1			89%	100%	1.57%	
Kakumiro	8	8	100%	322	316	6	5	6	5	0	0			100%	100%	1.9%	
Kalangala	4	15	27%	7	5	0	2	0	2	0	0	32	0%	100%	0%	0%	
Kaliro	5	6	83%	159	88	1	2	1	2	0	0	9	0%	56%	100%	1.14%	
Kalungu	10	16	62%	95	72	2	11	2	11	0	0	49	0%	86%	100%	2.78%	
Kampala	27	40	68%	2081	1945	45	108	38	119	0	0	734	2.72%	99%	108%	2.31%	
Kamuli	15	17	88%	414	401	2	12	2	12	0	0	29	0%	100%	100%	0.5%	
Kamwenge	15	15	100%	269	254	5	7	3	7	0	0	58	3.45%	97%	60%	1.97%	
Kanungu	16	17	94%	159	148	2	10	2	19	2	1	23	8.7%	99%	-29%	1.35%	
Kasese	33	40	82%	485	427	6	12	6	13	1	0	45	6.67%	90%	120%	1.41%	
Katakwi	8	12	67%	92	91	0	1	0	1	0	0			100%	0%	0%	
Kayunga	6	11	55%	193	147	4	9	4	7	1	0	26	0%	80%	67%	2.72%	
Kibaale	5	6	83%	174	172	2	2	1	2	0	0	59	5.08%	100%	0%	1.16%	
Kiboga	6	8	75%	157	147	4	13	4	13	0	0	21	4.76%	102%	100%	2.72%	
Kibuku	11	11	100%	191	137	1	3	1	2	3	2	3	0%	73%	50%	0.73%	
Kiruhura	19	21	90%	203	193	6	14	7	15	1	0	51	3.92%	102%	140%	3.11%	
Kiryandongo	11	11	100%	264	255	1	11	1	11	0	0	24	4.17%	101%	0%	0.39%	
Kisoro	20	20	100%	322	301	5	6	5	6	3	0	26	0%	95%	100%	1.66%	
Kitgum	9	12	75%	79	60	2	5	2	5	0	0	59	0%	81%	100%	3.33%	
Koboko	8	8	100%	148	146	1	1	1	1	0	0	13	0%	99%	0%	0.68%	
Kole	4	5	80%	41	40	1	1	1	1	0	0	13	0%	100%	100%	2.5%	
Kotido	6	16	38%	85	84	0	1	0	1	0	2	4	0%	100%	0%	0%	
Kumi	6	9	67%	83	79	1	3	1	3	0	0	19	5.26%	99%	100%	1.27%	
Kyankwanzi	5	12	42%	142	136	4	5	4	5	0	0	16	0%	99%	100%	2.94%	
Kyegegwa	8	9	89%	232	167	6	8	6	7	1	0	41	4.88%	75%	100%	3.59%	
Kyenjojo	18	18	100%	399	361	9	19	15	22	1	0	95	6.32%	95%	280%	2.49%	
Lamwo	7	9	78%	62	57	1	3	1	2	0	0	25	8%	97%	50%	1.75%	
Lira	7	19	37%	110	102	3	9	3	9	0	0	96	5.21%	101%	100%	2.94%	

Ministry of Health Option B+ Weekly Report (3.2)

Week ending 2018-07-08 (2018W27)

District and weekly rate				For Week ending 2018-07-08 (2018W27)									EID November 2015		Analysis		
Level	No of facilities reporting	No of registered facilities	Proportion of facilities reporting (reporting rate)	a. Total ANC1 visits	b. Total No of mothers tested at 1st ANC visit	c. Total No HIV Tested Positive at 1st ANC visit	d. Total No with known HIV+ status by ANC1	e. Total initiating Option B+ at 1st ANC visit	f. Total no on ART treatment by ANC1	h. Has Test Kits stockout	i. Has ARVs stockout	A. Number of EID tests carried out	B. Proportion of EID tests testing positive for HIV	1. Proportion of ANC1 with unknown status tested	2. Proportion of HIV+ women not yet on ART initiated	3. Proportion of women tested positive out of those tested	
Luuka	6	7	86%	104	89	2	1	2	1	0	0	4	0%	86%	100%	2.25%	
Luweero	21	57	37%	340	324	8	20	8	20	2	0	99	2.02%	101%	100%	2.47%	
Lwengo	8	13	62%	101	90	3	8	3	7	0	0	48	6.25%	97%	75%	3.33%	
Lyantonde	1	2	50%	8	7	0	1	0	1	0	0	38	7.89%	100%	0%	0%	
Manafwa	4	12	33%	73	73	0	1	0	1	0	0	8	0%	101%	0%	0%	
Maracha	10	10	100%	190	190	1	0	0	0	0	0			100%	0%	0.53%	
Masaka	16	21	76%	91	97	3	12	2	12	0	0	97	3.09%	123%	100%	3.09%	
Masindi	12	14	86%	275	260	12	15	11	14	0	0			100%	92%	4.62%	
Mayuge	9	14	64%	152	144	1	5	2	5	2	0	33	6.06%	98%	300%	0.69%	
Mbale	22	33	67%	324	307	3	15	4	15	2	0	59	1.69%	99%	200%	0.98%	
Mbarara	17	45	38%	245	225	13	12	12	12	0	0	162	4.94%	97%	92%	5.78%	
Mitooma	9	9	100%	131	123	2	8	2	8	0	0	10	0%	100%	100%	1.63%	
Mityana	20	26	77%	233	214	8	12	26	11	2	2	78	6.41%	97%	289%	3.74%	
Moroto	4	12	33%	22	22	1	1	1	1	0	0	5	0%	105%	100%	4.55%	
Moyo	13	14	93%	66	64	1	0	4	0	0	0	6	0%	97%	400%	1.56%	
Mpigi	0	2	0%									67	2.99%	null%	null%		
Mubende	18	23	78%	448	415	12	32	12	28	0	0	138	0%	100%	86%	2.89%	
Mukono	3	22	14%	50	46	1	3	1	3	0	0			98%	100%	2.17%	
Nakapiripirit	8	14	57%	120	120	0	0	0	0	0	0	4	0%	100%	0%	0%	
Nakaseke	10	15	67%	171	163	2	6	2	6	0	0	33	3.03%	99%	100%	1.23%	
Nakasongola	12	24	50%	165	155	1	4	1	4	0	0	22	4.55%	96%	100%	0.65%	
Namayingo	8	20	40%	116	90	3	5	3	2	0	0	26	3.85%	81%	43%	3.33%	
Namisindwa	5	18	28%	61	43	0	0	0	0	1	0			70%	0%	0%	
Namutumba	5	7	71%	118	117	1	1	1	1	0	0			100%	100%	0.85%	
Napak	5	8	62%	107	105	0	2	0	2	0	0	6	0%	100%	0%	0%	
Nebbi	12	12	100%	259	257	3	5	3	5	0	0	40	2.5%	101%	100%	1.17%	
Ngora	7	8	88%	116	115	0	2	0	2	0	0	12	0%	101%	0%	0%	
Ntoroko	2	4	50%	55	50	0	5	0	5	0	0	5	0%	100%	0%	0%	
Ntungamo	15	17	88%	322	285	4	19	3	19	1	0	39	2.56%	94%	75%	1.4%	
Nwoya	4	7	57%	65	59	0	2	0	2	0	0	25	0%	94%	0%	0%	
Omoro	1	6	17%	8	5	0	3	0	3	0	0			100%	0%	0%	
Otuke	6	7	86%	81	78	0	3	0	3	0	0	10	0%	100%	0%	0%	

Ministry of Health Option B+ Weekly Report (3.2)

Week ending 2018-07-08 (2018W27)

District and weekly rate				For Week ending 2018-07-08 (2018W27)									EID November 2015		Analysis		
Level	No of facilities reporting	No of registered facilities	Proportion of facilities reporting (reporting rate)	a. Total ANC1 visits	b. Total No of mothers tested at 1st ANC visit	c. Total No HIV Tested Positive at 1st ANC visit	d. Total No with known HIV+ status by ANC1	e. Total initiating Option B+ at 1st ANC visit	f. Total no on ART treatment by ANC1	h. Has Test Kits stockout	i. Has ARVs stockout	A. Number of EID tests carried out	B. Proportion of EID tests testing positive for HIV	1. Proportion of ANC1 with unknown status tested	2. Proportion of HIV+ women not yet on ART initiated	3. Proportion of women tested positive out of those tested	
Oyam	7	7	100%	160	157	3	3	3	3	0	0	40	0%	100%	100%	1.91%	
Pader	4	11	36%	41	39	1	2	1	2	0	0	50	4%	100%	100%	2.56%	
Pakwach	9	9	100%	137	135	3	2	3	2	0	0			100%	100%	2.22%	
Pallisa	16	19	84%	311	320	1	1	1	1	1	0	12	0%	103%	100%	0.31%	
Rakai	10	15	67%	97	92	0	4	0	4	0	0	155	3.23%	99%	0%	0%	
Rubirizi	6	8	75%	75	70	1	5	1	4	1	0	16	0%	100%	0%	1.43%	
Rukungiri	17	20	85%	213	200	3	13	4	13	1	0	61	1.64%	100%	133%	1.5%	
Serere	11	14	79%	123	147	3	1	3	1	0	0	38	7.89%	120%	100%	2.04%	
Sheema	9	9	100%	117	103	2	14	2	14	0	0	51	1.96%	100%	100%	1.94%	
Sironko	16	16	100%	222	211	1	2	1	2	1	0	10	0%	96%	100%	0.47%	
Soroti	16	21	76%	179	179	1	8	1	8	1	1	42	4.76%	105%	100%	0.56%	
Tororo	20	49	41%	380	361	3	10	3	10	2	0	59	1.69%	98%	100%	0.83%	
Wakiso	55	81	68%	1158	1081	37	68	35	69	0	1	252	4.37%	99%	97%	3.42%	
Yumbe	13	13	100%	214	214	0	0	0	0	0	0	13	7.69%	100%	0%	0%	
Zombo	10	11	91%	247	243	3	5	2	5	0	0	23	4.35%	100%	50%	1.23%	

EID data provided by CPHL up to 2015-12-10 cumulative for the entire month of November 2015

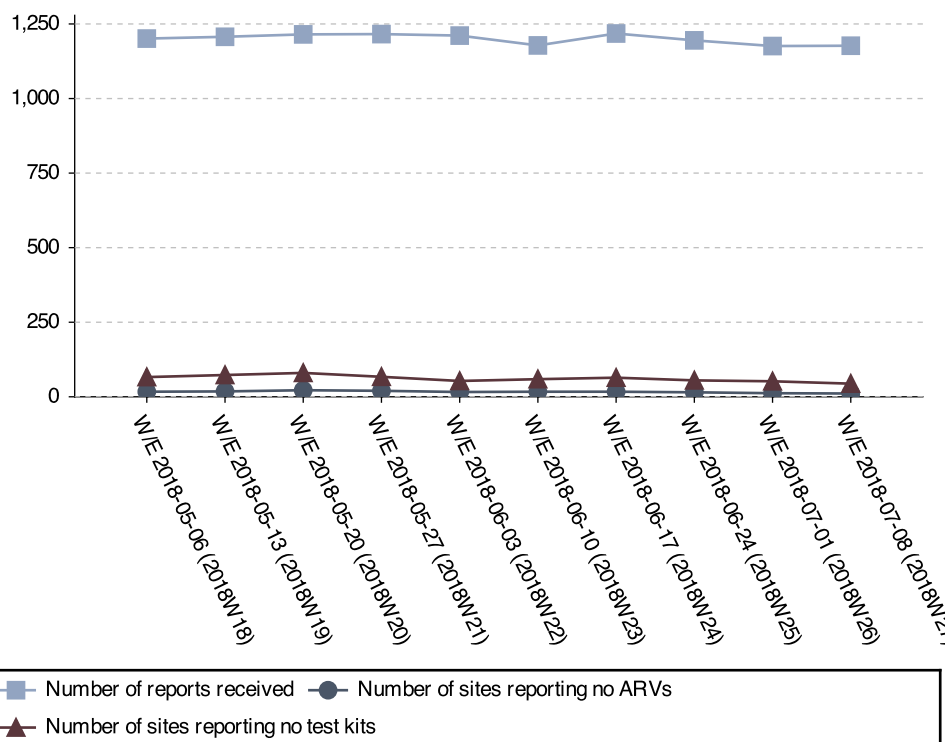
Ministry of Health Option B+ Weekly Report (3.2)

Week ending 2018-07-08 (2018W27)

Stock-outs for the last 6 weeks per facility level

	2018W27		2018W26		2018W25		2018W24		2018W23		2018W22	
	ARVs	HIV Test kits	ARVs	HIV Test kits	ARVs	HIV Test kits	ARVs	HIV Test kits	ARVs	HIV Test kits	ARVs	HIV Test kits
Clinic	0	0	0	0	0	0	0	0	0	0	0	0
General Hospital	0	1	0	0	1	1	1	2	1	2	0	1
HC II	1	13	0	18	1	19	1	18	2	19	4	19
HC III	9	35	11	34	12	37	14	43	12	38	11	31
HC IV	0	0	1	2	1	1	1	4	2	2	1	2
NR Hospital	0	0	0	0	0	0	0	0	0	0	0	0
Other/unknown	0	0	0	1	0	0	0	0	0	0	0	1
RR Hospital	0	0	0	0	0	0	0	1	0	0	0	0
Total	10	49	12	55	15	58	17	68	17	61	16	54

Stock-out trends for the last 10 weeks



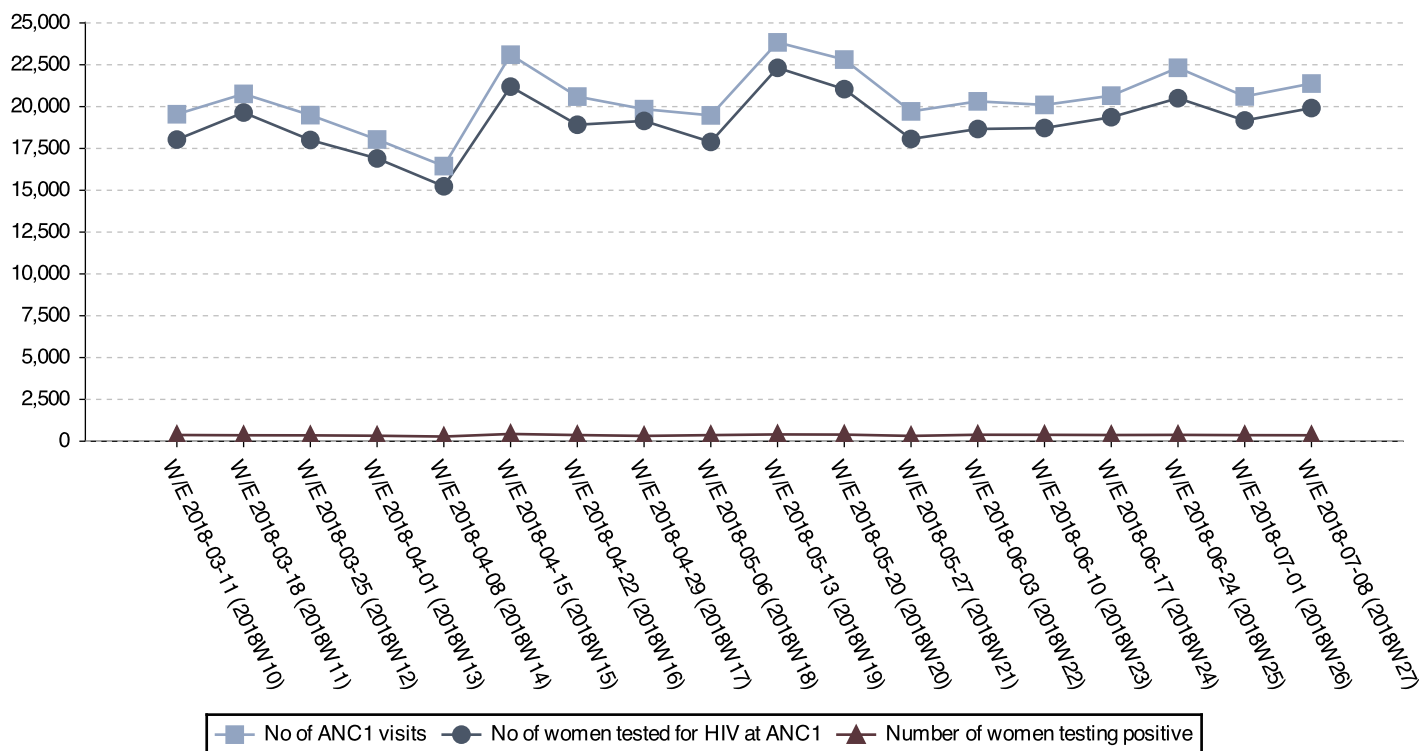
Current stock-outs per IP

IP	Test kit stockout	ARV stockout
RHITES-E	13	4
RHITES-SW	10	1
Baylor	6	0
RHITES-EC	5	1
Mildmay	4	2
TASO	3	0
IDI	3	1
PREFA	2	1
Walter Reed	1	0
HIWA	1	0
TASO Teso	1	1
CUAMM	0	2
Total	49	13

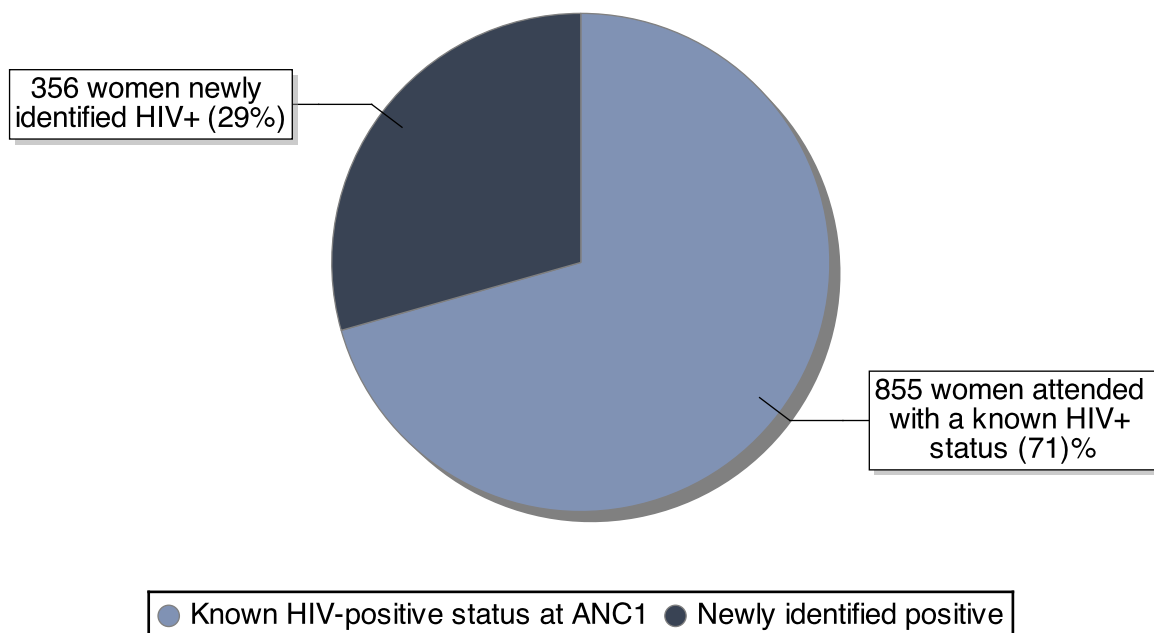
Ministry of Health Option B+ Weekly Report (3.2)

Week ending 2018-07-08 (2018W27)

ANC trends for the last 18 weeks



Break down of existing vs. newly identified infections



Ratio newly identified / already known status: 0.42

Ministry of Health Option B+ Weekly Report (3.2)

Week ending 2018-07-08 (2018W27)

District Service Delivery Focus

High HIV+ EID Testing

This section shows 20 districts with high proportions of HIV+ 1st PCR EID tests. Please consider both the actual number and the proportion.

District	# EID Tests	# Positive	% Positive
Amudat	3	1	33.33
Bududa	5	1	20.00
Buvuma	13	2	15.38
Abim	7	1	14.29
Amolatar	18	2	11.11
Kaberamaido	19	2	10.53
Agago	33	3	9.09
Butaleja	11	1	9.09
Adjumani	11	1	9.09
Kanungu	23	2	8.70
Alebtong	23	2	8.70
Lamwo	25	2	8.00
Lyantonde	38	3	7.89
Serere	38	3	7.89
Yumbe	13	1	7.69
Isingiro	56	4	7.14
Kasese	45	3	6.67
Mityana	78	5	6.41
Kyenjojo	95	6	6.32
Lwengo	48	3	6.25
Mayuge	33	2	6.06
Kabale	53	3	5.66
Dokolo	18	1	5.56
Apac	36	2	5.56
Kumi	19	1	5.26

Low initiation on ART

This section shows 15 districts with low ART initiation rates. Please consider the actual ART need in addition to the proportion.

District	ART Need	# Initiated	% Initiated
Alebtong	1	2	0
Bukedea	1	0	0
Butaleja	1	0	0
Kibaale	2	1	0
Kiryandongo	1	1	0
Koboko	1	1	0
Maracha	1	0	0
Rubirizi	2	1	0
Arua District	3	2	40
Namayingo	6	3	43
Amuria	2	1	50
Kibuku	2	1	50
Zombo	3	2	50
Lamwo	2	1	50
Kamwenge	5	3	60

Data Quality challenges by IP

'Overtesting'

IPs listed here have 'overtested' – which means that there are issues with data quality. Ensure that facilities have the latest version of the job aide, and that health workers understand that most indicators pertain to ANC1 visits only.

IP	# ANC1 Visits	# Tested	% Tested
RTI	82	89	110
TASO Teso	920	947	106
UPMB	90	84	104
IRCU	442	430	101

'Overinitiating'

IPs listed here have 'overinitiated' – which means that there are issues with data quality. Ensure that facilities have the latest version of the job aide, and that health workers understand that most indicators pertain to ANC1 visits only.

IP	ART Need	# Initiated	% Initiated
UCMB	6	12	175
Baylor	33	38	121
Mildmay	66	78	119
IDI	37	39	114
RHITES-SW	46	52	109
IDI-KCC	26	27	104

None of the proportions mentioned above should exceed 100%, as all proportions relate to ANC1 visits only. They take both women with a known positive status and women already on ART into consideration. Please see <http://reports.dhis2sms.ug> for further details, including detailed facility data.