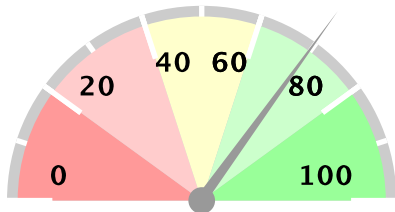


Ministry of Health Option B+ Weekly Report (3.2)

Week ending 2018-07-01 (2018W26)

Summary

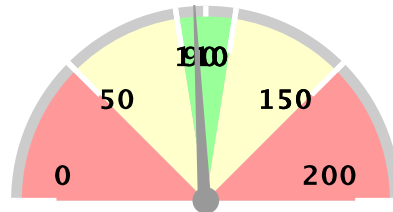
Weekly reporting rate



70%

1188 reports received out of 1696 registered facilities

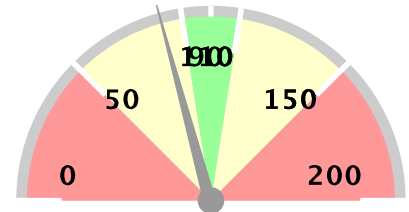
% of ANC1 attendees tested for HIV



97%

20737 ANC1 visits

% of women initiated on Option B+



83%

332 initiated on ART

Stockouts and missed appointments

Facilities without ARVs	12	1%
Facilities without test kits	52	4%
Number missed appointments	830	

1st PCR EID testing for August 2015*

Number of EID tests	4936
Number of positive EID tests	169
Proportion testing positive	3.42%

The week in numbers

Number of reports received this week 1188

Number of facilities registered for B+ 1696

Testing coverage for this week

Number of ANC 1 visits 20737

No. tested for HIV at ANC 1 93% 19287

No. HIV+ women identified at ANC 1 1165

Newly identified thru testing 31% 365

With a known status 69% 800

Proportion newly tested +ve at ANC 1 1.89%

Proportion of +ve women at ANC 1 5.62%

ART coverage for this week

Total HIV + Women at ANC 1 1165

Total already on ART 65% 756

Total to be initiated 72% 833

Total no of women initiated on ART 332

Proportion of women initiated on ART 251%

Proportion with known status already on ART 94.50%

This proportion shows how many women who have a known positive status are already on ART

The data as presented in this report using data from MoH/EOC Weekly Reporting and CPHL. PMTCT service delivery data is weekly data, EID testing data is cumulative monthly. EID number includes data up 2013-09-01. Starting from June 2014, EID data contains only 1st PCR tests.

Ministry of Health Option B+ Weekly Report (3.2)

Week ending 2018-07-01 (2018W26)

Overall performance per IP

Note: IP data does not add up to national totals due to the fact that IPs overlap in districts. EID data is aggregate for all districts in which an IP operates, and not based on individual facilities supported by an IP.

District and weekly rate				For Week ending 2018-07-01 (2018W26)									EID November 2015		Analysis		
Level	No of facilities reporting	No of registered facilities	Proportion of facilities reporting (reporting rate)	a. Total ANC1 visits	b. Total No of mothers tested at 1st ANC visit	c. Total No HIV Tested Positive at 1st ANC visit	d. Total No with known HIV+ status by ANC1	e. Total initiating Option B+ at 1st ANC visit	f. Total no on ART treatment by ANC1	h. Has Test Kits stockout	i. Has ARVs stockout	A. Number of EID tests carried out	B. Proportion of EID tests testing positive for HIV	1. Proportion of ANC1 with unknown status tested	2. Proportion of HIV+ women not yet on ART initiated	3. Proportion of women tested positive out of those tested	
Uganda	1176	1696	69%	20608	19171	362	798	329	749	52	12	4936	3.42%	97%	82%	1.89%	
Baylor	104	112	93%	1794	1625	36	62	29	51	6	0	402	4.48%	94%	66%	2.22%	
CAF	3	6	50%	8	3	0	3	0	3	0	0	1133	3.09%	60%	0%	0%	
CUAMM	29	63	46%	413	411	1	2	1	2	0	2	29	6.9%	100%	100%	0.24%	
HIWA	7	9	78%	55	53	2	2	2	2	0	0	1281	2.65%	100%	100%	3.77%	
IDI-KCC	7	7	100%	1116	1051	35	76	34	55	0	0	734	2.72%	101%	61%	3.33%	
IDI	198	199	99%	3830	3684	43	78	34	75	1	0	330	3.64%	98%	63%	1.17%	
IRCU	12	15	80%	352	336	4	14	7	17	0	0	1457	3.09%	99%	700%	1.19%	
Kalangala	3	15	20%	23	15	0	5	0	5	1	0	32	0%	83%	0%	0%	
Mildmay	126	155	81%	2412	2270	73	113	71	107	4	2	659	3.19%	99%	89%	3.22%	
MJAP	20	22	91%	626	569	23	43	23	43	0	0	896	3.12%	98%	100%	4.04%	
MRC-UVRI	1	1	100%	1	1	0	0	0	0	0	0	734	2.72%	100%	0%	0%	
PREFA	76	106	72%	1065	1026	28	59	25	53	3	3	567	3.53%	102%	76%	2.73%	
Reach Out	5	7	71%	16	10	0	6	0	6	0	0	1085	3.04%	100%	0%	0%	
RHITES-EC	84	121	69%	1875	1714	25	53	21	49	8	0	279	2.15%	94%	75%	1.46%	
RHITES-E	122	161	76%	1949	1778	16	29	19	31	11	6	183	2.19%	93%	120%	0.9%	
RHITES-SW	200	215	93%	2364	2095	60	115	44	122	14	1	648	3.55%	93%	84%	2.86%	
RHSP	10	15	67%	77	68	1	5	0	3	0	0	155	3.23%	94%	0%	1.47%	
RHU	1	1	100%	8	8	0	0	0	0	0	0	64	1.56%	100%	0%	0%	
RTI	9	19	47%	86	84	1	14	1	14	1	0	2002	3.05%	117%	100%	1.19%	
SUSTAIN	10	12	83%	503	458	10	29	11	28	0	0	723	2.77%	97%	100%	2.18%	
TASO	49	65	75%	853	806	12	33	9	32	2	2	1672	3.11%	98%	72%	1.49%	
TASO Teso	69	93	74%	888	895	4	20	8	16	0	0	170	4.71%	103%	100%	0.45%	
UCMB	13	18	72%	590	537	5	34	6	33	0	0	1907	2.83%	97%	100%	0.93%	
UHMG	6	18	33%	25	23	0	1	0	1	0	0	1232	3.17%	96%	0%	0%	
UPMB	7	13	54%	81	76	1	4	1	4	0	0	1399	3.5%	99%	100%	1.32%	
USAID ASSIST	72	125	58%	888	806	9	38	8	37	3	0	569	3.69%	95%	80%	1.12%	
USAID PHS	27	39	69%	416	399	4	14	7	17	0	0	2064	3.29%	99%	700%	1%	

Ministry of Health Option B+ Weekly Report (3.2)

Week ending 2018-07-01 (2018W26)

District and weekly rate			For Week ending 2018-07-01 (2018W26)										EID November 2015		Analysis		
Level	No of facilities reporting	No of registered facilities	Proportion of facilities reporting (reporting rate)	a. Total ANC1 visits	b. Total No of mothers tested at 1st ANC visit	c. Total No HIV Tested Positive at 1st ANC visit	d. Total No with known HIV+ status by ANC1	e. Total initiating Option B+ at 1st ANC visit	f. Total no on ART treatment by ANC1	h. Has Test Kits stockout	i. Has ARVs stockout	A. Number of EID tests carried out	B. Proportion of EID tests testing positive for HIV	1. Proportion of ANC1 with unknown status tested	2. Proportion of HIV+ women not yet on ART initiated	3. Proportion of women tested positive out of those tested	
Walter Reed	14	64	22%	288	267	4	21	4	19	1	0	39	5.13%	100%	67%	1.5%	

EID data provided by CPHL up to 2015-12-10 cumulative for the entire month of November 2015

Overall performance per district

Note:

Ministry of Health Option B+ Weekly Report (3.2)

Week ending 2018-07-01 (2018W26)

District and weekly rate				For Week ending 2018-07-01 (2018W26)									EID November 2015		Analysis		
Level	No of facilities reporting	No of registered facilities	Proportion of facilities reporting (reporting rate)	a. Total ANC1 visits	b. Total No of mothers tested at 1st ANC visit	c. Total No HIV Tested Positive at 1st ANC visit	d. Total No with known HIV+ status by ANC1	e. Total initiating Option B+ at 1st ANC visit	f. Total no on ART treatment by ANC1	h. Has Test Kits stockout	i. Has ARVs stockout	A. Number of EID tests carried out	B. Proportion of EID tests testing positive for HIV	1. Proportion of ANC1 with unknown status tested	2. Proportion of HIV+ women not yet on ART initiated	3. Proportion of women tested positive out of those tested	
Uganda	1176	1696	69%	20608	19171	362	798	329	749	52	12	4936	3.42%	97%	82%	1.89%	
Abim	5	8	62%	53	52	1	1	1	1	0	0	7	14.29%	100%	100%	1.92%	
Adjumani	12	12	100%	105	105	4	2	2	0	0	0	11	9.09%	102%	33%	3.81%	
Agago	2	9	22%	70	69	1	3	1	3	0	0	33	9.09%	103%	100%	1.45%	
Alebtong	7	7	100%	114	101	0	5	0	4	1	0	23	8.7%	93%	0%	0%	
Amolatar	4	5	80%	48	47	1	1	1	1	0	0	18	11.11%	100%	100%	2.13%	
Amudat	1	4	25%	18	18	0	0	0	0	0	0	3	33.33%	100%	0%	0%	
Amuria	11	14	79%	143	121	1	3	0	2	0	0	26	0%	86%	0%	0.83%	
Amuru	1	8	12%	8	5	0	1	0	1	0	0	8	0%	71%	0%	0%	
Apac	7	12	58%	137	117	3	10	2	10	0	0	36	5.56%	92%	67%	2.56%	
Arua	41	42	98%	655	648	0	5	1	7	0	0	54	1.85%	100%	-100%	0%	
Budaka	8	14	57%	131	131	0	0	0	0	0	0	7	0%	100%	0%	0%	
Bududa	7	8	88%	81	67	0	1	0	1	1	0	5	20%	84%	0%	0%	
Bugiri	11	15	73%	216	227	5	7	4	5	0	0	38	2.63%	109%	100%	2.2%	
Buhweju	6	6	100%	64	61	2	1	2	2	1	0	5	0%	97%	100%	3.28%	
Buikwe	6	32	19%	118	111	2	5	2	5	1	0			98%	100%	1.8%	
Bukedea	4	8	50%	82	92	1	1	0	0	0	0	14	0%	114%	0%	1.09%	
Bukwo	5	5	100%	31	28	3	2	10	4	0	0			97%	1000%	10.71%	
Buliisa	8	8	100%	122	113	1	9	1	9	0	0	9	0%	100%	0%	0.88%	
Bundibugyo	11	11	100%	224	195	0	0	0	0	1	0	4	0%	87%	0%	0%	
Bushenyi	15	18	83%	147	131	2	15	2	15	0	0	64	1.56%	99%	100%	1.53%	
Busia	9	12	75%	187	173	6	10	5	8	0	0	29	0%	98%	62%	3.47%	
Butaleja	9	13	69%	194	152	0	3	0	3	3	0	11	9.09%	80%	0%	0%	
Buvuma	0	10	0%									13	15.38%	null%	null%		
Buyende	5	9	56%	140	124	0	5	0	5	1	0			92%	0%	0%	
Dokolo	4	5	80%	40	35	2	3	2	3	0	0	18	5.56%	95%	100%	5.71%	
Gulu	8	14	57%	165	156	3	9	4	9	0	0	115	1.74%	100%	150%	1.92%	
Hoima	24	26	92%	509	490	9	19	10	19	0	0	78	3.85%	100%	100%	1.84%	
Ibanda	10	10	100%	193	163	4	12	4	12	0	0	31	0%	90%	100%	2.45%	
Iganga	12	17	71%	325	288	7	7	5	7	3	0	47	2.13%	91%	71%	2.43%	
Isingiro	26	26	100%	338	224	7	10	7	11	4	1	56	7.14%	68%	117%	3.12%	
Jinja	15	23	65%	257	244	3	10	2	9	0	0	83	3.61%	99%	33%	1.23%	

Ministry of Health Option B+ Weekly Report (3.2)

Week ending 2018-07-01 (2018W26)

District and weekly rate				For Week ending 2018-07-01 (2018W26)									EID null		Analysis		
Level	No of facilities reporting	No of registered facilities	Proportion of facilities reporting (reporting rate)	a. Total ANC1 visits	b. Total No of mothers tested at 1st ANC visit	c. Total No HIV Tested Positive at 1st ANC visit	d. Total No with known HIV+ status by ANC1	e. Total initiating Option B+ at 1st ANC visit	f. Total no on ART treatment by ANC1	h. Has Test Kits stockout	i. Has ARVs stockout	A. Number of EID tests carried out	B. Proportion of EID tests testing positive for HIV	1. Proportion of ANC1 with unknown status tested	2. Proportion of HIV+ women not yet on ART initiated	3. Proportion of women tested positive out of those tested	
Kaabong	3	13	23%	42	42	0	0	0	0	0	0			100%	0%	0%	
Kabale	27	27	100%	198	191	3	5	3	5	0	0	53	5.66%	99%	100%	1.57%	
Kabarole	23	25	92%	246	203	9	28	8	26	2	0	154	3.25%	93%	73%	4.43%	
Kaberamaido	8	12	67%	146	140	0	6	0	6	0	0	19	10.53%	100%	0%	0%	
Kagadi	11	11	100%	368	320	0	12	0	12	1	0			90%	0%	0%	
Kakumiro	8	8	100%	307	298	2	9	2	8	0	0			100%	67%	0.67%	
Kalangala	3	15	20%	23	15	0	5	0	5	1	0	32	0%	83%	0%	0%	
Kaliro	4	6	67%	87	71	1	2	1	2	0	0	9	0%	84%	100%	1.41%	
Kalungu	10	16	62%	103	66	3	11	2	10	0	1	49	0%	72%	67%	4.55%	
Kampala	29	40	72%	1816	1688	49	118	51	99	1	0	734	2.72%	99%	81%	2.9%	
Kamuli	16	17	94%	348	342	0	8	0	8	0	0	29	0%	101%	0%	0%	
Kamwenge	14	15	93%	222	212	1	6	1	6	1	0	58	3.45%	98%	100%	0.47%	
Kanungu	14	17	82%	138	110	15	8	0	17	2	0	23	8.7%	85%	0%	13.64%	
Kasese	32	40	80%	483	451	7	10	5	7	2	0	45	6.67%	95%	56%	1.55%	
Katakwi	9	12	75%	68	65	0	1	0	1	0	0			97%	0%	0%	
Kayunga	6	11	55%	224	209	4	15	4	13	0	0	26	0%	100%	67%	1.91%	
Kibaale	6	6	100%	92	89	0	3	0	3	0	0	59	5.08%	100%	0%	0%	
Kiboga	7	8	88%	139	129	6	7	6	7	0	0	21	4.76%	98%	100%	4.65%	
Kibuku	11	11	100%	141	114	2	1	1	1	3	2	3	0%	81%	50%	1.75%	
Kiruhura	20	21	95%	272	265	3	13	2	11	0	0	51	3.92%	102%	40%	1.13%	
Kiryandongo	11	11	100%	283	263	6	8	5	8	0	0	24	4.17%	96%	100%	2.28%	
Kisoro	20	20	100%	253	238	0	2	0	2	4	0	26	0%	95%	0%	0%	
Kitgum	10	12	83%	98	97	0	5	0	4	0	0	59	0%	104%	0%	0%	
Koboko	8	8	100%	199	198	3	1	3	1	0	0	13	0%	100%	100%	1.52%	
Kole	3	5	60%	34	34	0	1	0	1	0	0	13	0%	103%	0%	0%	
Kotido	7	16	44%	110	109	0	1	0	1	0	2	4	0%	100%	0%	0%	
Kumi	6	9	67%	103	98	0	5	0	5	0	0	19	5.26%	100%	0%	0%	
Kyankwanzi	8	12	67%	117	106	2	5	2	5	0	0	16	0%	95%	0%	1.89%	
Kyegegwa	9	9	100%	208	184	5	4	5	2	0	0	41	4.88%	90%	100%	2.72%	
Kyenjojo	17	18	94%	385	347	13	18	9	14	0	0	95	6.32%	95%	53%	3.75%	
Lamwo	6	9	67%	40	39	0	2	0	2	1	0	25	8%	103%	0%	0%	
Lira	6	19	32%	52	49	2	3	2	3	0	0	96	5.21%	100%	100%	4.08%	

Ministry of Health Option B+ Weekly Report (3.2)

Week ending 2018-07-01 (2018W26)

District and weekly rate				For Week ending 2018-07-01 (2018W26)									EID November 2015		Analysis		
Level	No of facilities reporting	No of registered facilities	Proportion of facilities reporting (reporting rate)	a. Total ANC1 visits	b. Total No of mothers tested at 1st ANC visit	c. Total No HIV Tested Positive at 1st ANC visit	d. Total No with known HIV+ status by ANC1	e. Total initiating Option B+ at 1st ANC visit	f. Total no on ART treatment by ANC1	h. Has Test Kits stockout	i. Has ARVs stockout	A. Number of EID tests carried out	B. Proportion of EID tests testing positive for HIV	1. Proportion of ANC1 with unknown status tested	2. Proportion of HIV+ women not yet on ART initiated	3. Proportion of women tested positive out of those tested	
Luuka	6	7	86%	120	117	2	4	2	4	0	0	4	0%	101%	100%	1.71%	
Luweero	22	57	39%	378	369	5	26	4	26	1	0	99	2.02%	105%	78%	1.36%	
Lwengo	8	13	62%	129	120	5	9	3	8	0	0	48	6.25%	100%	50%	4.17%	
Lyantonde	1	2	50%	1	1	1	0	1	0	0	0	38	7.89%	100%	100%	100%	
Manafwa	5	12	42%	88	88	0	0	0	0	1	0	8	0%	100%	0%	0%	
Maracha	10	10	100%	133	131	0	3	0	3	0	0			101%	0%	0%	
Masaka	17	21	81%	165	181	5	12	6	13	2	2	97	3.09%	118%	133%	2.76%	
Masindi	12	14	86%	281	263	6	8	5	8	0	0			96%	83%	2.28%	
Mayuge	10	14	71%	259	224	3	3	3	2	3	0	33	6.06%	88%	67%	1.34%	
Mbale	24	33	73%	314	270	3	12	2	11	1	0	59	1.69%	89%	50%	1.11%	
Mbarara	21	45	47%	265	247	11	16	11	16	0	0	162	4.94%	99%	100%	4.45%	
Mitooma	8	9	89%	95	92	0	3	0	3	0	0	10	0%	100%	0%	0%	
Mityana	21	26	81%	234	195	10	16	10	14	2	2	78	6.41%	89%	83%	5.13%	
Moroto	3	12	25%	26	26	0	2	0	2	0	0	5	0%	108%	0%	0%	
Moyo	13	14	93%	73	70	8	1	1	1	0	0	6	0%	97%	12%	11.43%	
Mpigi	1	2	50%	24	23	0	1	0	1	0	0	67	2.99%	100%	0%	0%	
Mubende	18	23	78%	468	439	22	30	21	28	1	0	138	0%	100%	84%	5.01%	
Mukono	5	22	23%	70	63	0	7	0	7	0	0			100%	0%	0%	
Nakapiripirit	9	14	64%	134	134	0	0	0	0	0	0	4	0%	100%	0%	0%	
Nakaseke	9	15	60%	139	134	5	5	5	5	0	0	33	3.03%	100%	100%	3.73%	
Nakasongola	10	24	42%	108	107	3	4	3	4	0	0	22	4.55%	103%	100%	2.8%	
Namayingo	6	20	30%	70	33	0	1	0	2	1	0	26	3.85%	48%	0%	0%	
Namisindwa	5	18	28%	54	37	0	0	0	0	1	2			69%	0%	0%	
Namutumba	5	7	71%	139	133	1	4	1	4	0	0			99%	100%	0.75%	
Napak	3	8	38%	56	56	0	0	0	0	0	0	6	0%	100%	0%	0%	
Nebbi	12	12	100%	286	270	3	12	3	12	0	0	40	2.5%	99%	100%	1.11%	
Ngora	7	8	88%	82	86	1	1	1	1	0	0	12	0%	106%	100%	1.16%	
Ntoroko	3	4	75%	68	67	1	1	1	1	0	0	5	0%	100%	100%	1.49%	
Ntungamo	13	17	76%	209	198	5	9	5	9	0	0	39	2.56%	99%	100%	2.53%	
Nwoya	4	7	57%	66	59	0	1	0	1	1	0	25	0%	91%	0%	0%	
Omoro	2	6	33%	10	10	0	0	0	0	0	0			100%	0%	0%	
Otuke	7	7	100%	104	103	0	0	0	0	0	0	10	0%	99%	0%	0%	

Ministry of Health Option B+ Weekly Report (3.2)

Week ending 2018-07-01 (2018W26)

District and weekly rate				For Week ending 2018-07-01 (2018W26)									EID November 2015		Analysis		
Level	No of facilities reporting	No of registered facilities	Proportion of facilities reporting (reporting rate)	a. Total ANC1 visits	b. Total No of mothers tested at 1st ANC visit	c. Total No HIV Tested Positive at 1st ANC visit	d. Total No with known HIV+ status by ANC1	e. Total initiating Option B+ at 1st ANC visit	f. Total no on ART treatment by ANC1	h. Has Test Kits stockout	i. Has ARVs stockout	A. Number of EID tests carried out	B. Proportion of EID tests testing positive for HIV	1. Proportion of ANC1 with unknown status tested	2. Proportion of HIV+ women not yet on ART initiated	3. Proportion of women tested positive out of those tested	
Oyam	6	7	86%	126	101	2	4	2	4	0	0	40	0%	83%	100%	1.98%	
Pader	4	11	36%	38	36	0	2	0	2	0	0	50	4%	100%	0%	0%	
Pakwach	9	9	100%	162	162	0	0	0	0	0	0			100%	0%	0%	
Pallisa	13	19	68%	260	258	1	0	0	1	0	0	12	0%	99%	0%	0.39%	
Rakai	10	15	67%	77	68	1	5	0	3	0	0	155	3.23%	94%	0%	1.47%	
Rubirizi	6	8	75%	40	37	3	5	3	5	1	0	16	0%	106%	100%	8.11%	
Rukungiri	16	20	80%	170	156	5	13	4	11	2	0	61	1.64%	99%	57%	3.21%	
Serere	11	14	79%	127	163	1	2	7	2	0	0	38	7.89%	130%	700%	0.61%	
Sheema	9	9	100%	123	111	2	12	3	12	0	0	51	1.96%	100%	200%	1.8%	
Sironko	15	16	94%	188	171	1	2	1	2	1	0	10	0%	92%	100%	0.58%	
Soroti	17	21	81%	172	157	0	9	0	7	0	0	42	4.76%	96%	0%	0%	
Tororo	18	49	37%	390	383	6	8	5	8	0	0	59	1.69%	100%	83%	1.57%	
Wakiso	53	81	65%	1231	1159	31	58	31	52	0	0	252	4.37%	99%	86%	2.67%	
Yumbe	13	13	100%	363	363	2	1	2	0	0	0	13	7.69%	100%	67%	0.55%	
Zombo	10	11	91%	233	230	3	3	3	3	0	0	23	4.35%	100%	100%	1.3%	

EID data provided by CPHL up to 2015-12-10 cumulative for the entire month of November 2015

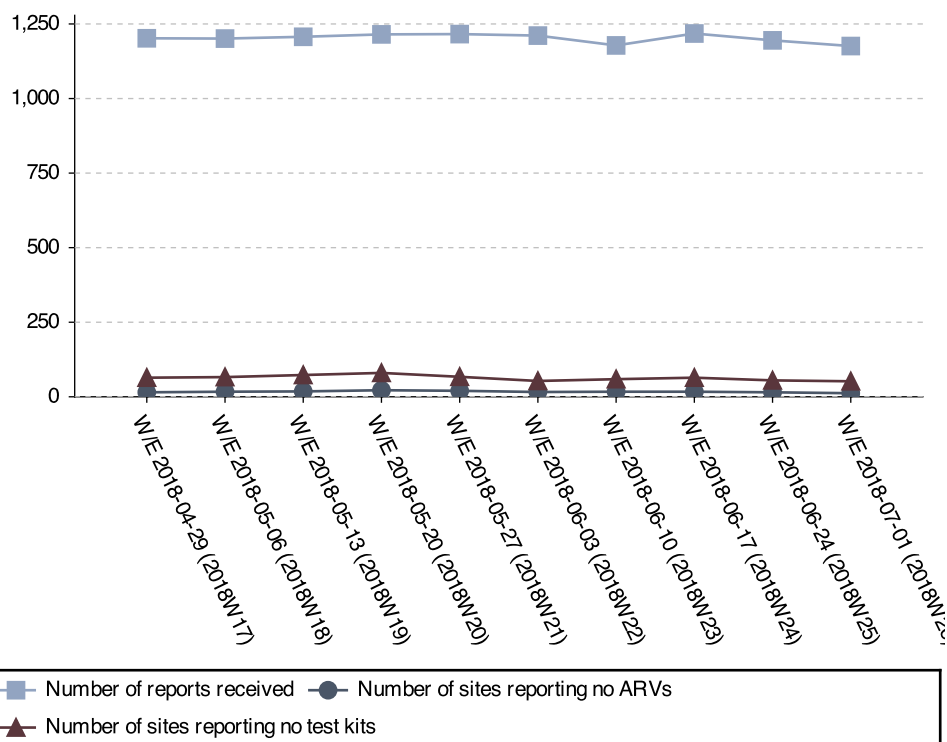
Ministry of Health Option B+ Weekly Report (3.2)

Week ending 2018-07-01 (2018W26)

Stock-outs for the last 6 weeks per facility level

	2018W26		2018W25		2018W24		2018W23		2018W22		2018W21	
	ARVs	HIV Test kits	ARVs	HIV Test kits	ARVs	HIV Test kits	ARVs	HIV Test kits	ARVs	HIV Test kits	ARVs	HIV Test kits
Clinic	0	0	0	0	0	0	0	0	0	0	0	0
General Hospital	0	0	1	1	1	2	1	2	0	1	0	1
HC II	0	18	1	19	1	18	2	19	4	19	1	18
HC III	11	34	12	37	14	43	12	38	11	31	18	43
HC IV	1	2	1	1	1	4	2	2	1	2	1	8
NR Hospital	0	0	0	0	0	0	0	0	0	0	0	0
Other/unknown	0	1	0	0	0	0	0	0	0	1	0	1
RR Hospital	0	0	0	0	0	1	0	0	0	0	0	0
Total	12	55	15	58	17	68	17	61	16	54	20	71

Stock-out trends for the last 10 weeks



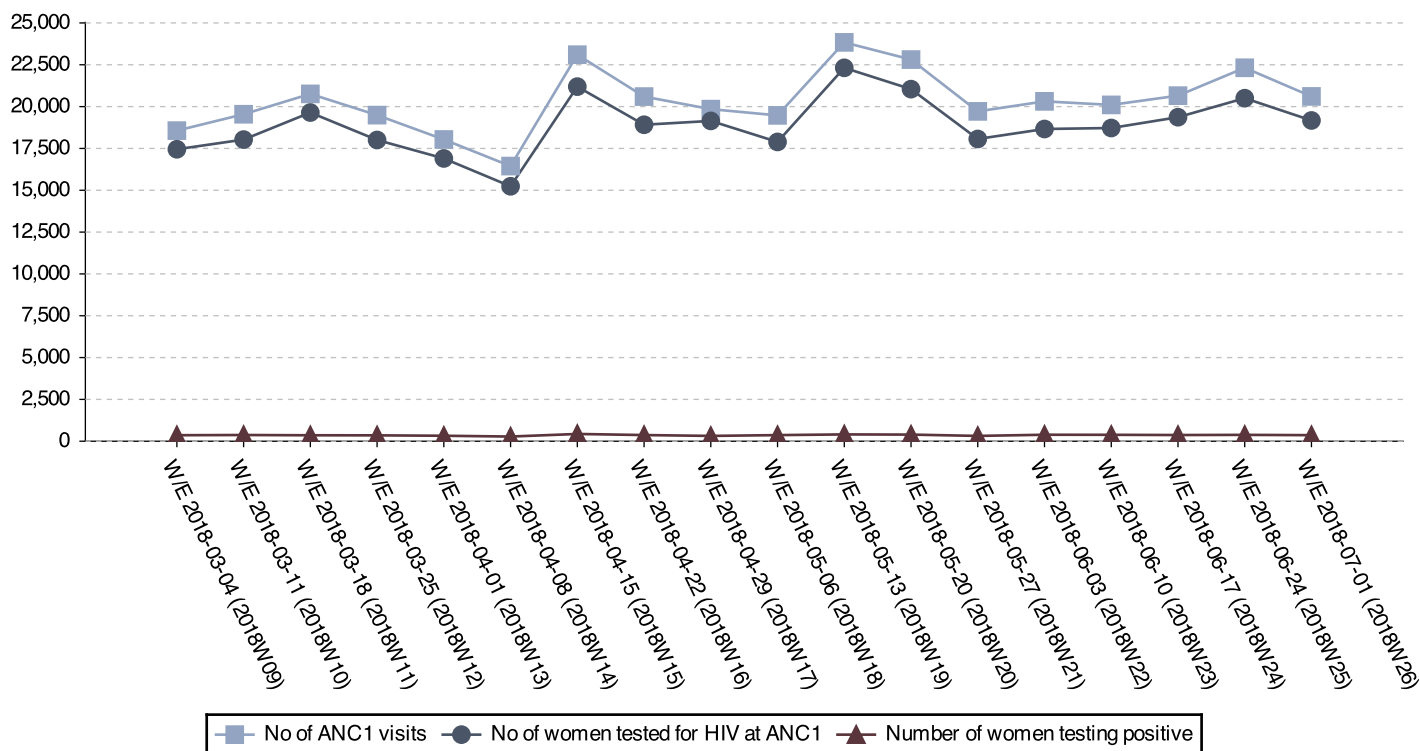
Current stock-outs per IP

IP	Test kit stockout	ARV stockout
RHITES-SW	14	1
RHITES-E	11	6
RHITES-EC	8	0
Baylor	6	0
Mildmay	4	2
PREFA	3	3
USAID ASSIST	3	0
TASO	2	2
Walter Reed	1	0
Kalangala	1	0
IDI	1	0
RTI	1	0
CUAMM	0	2
Total	55	16

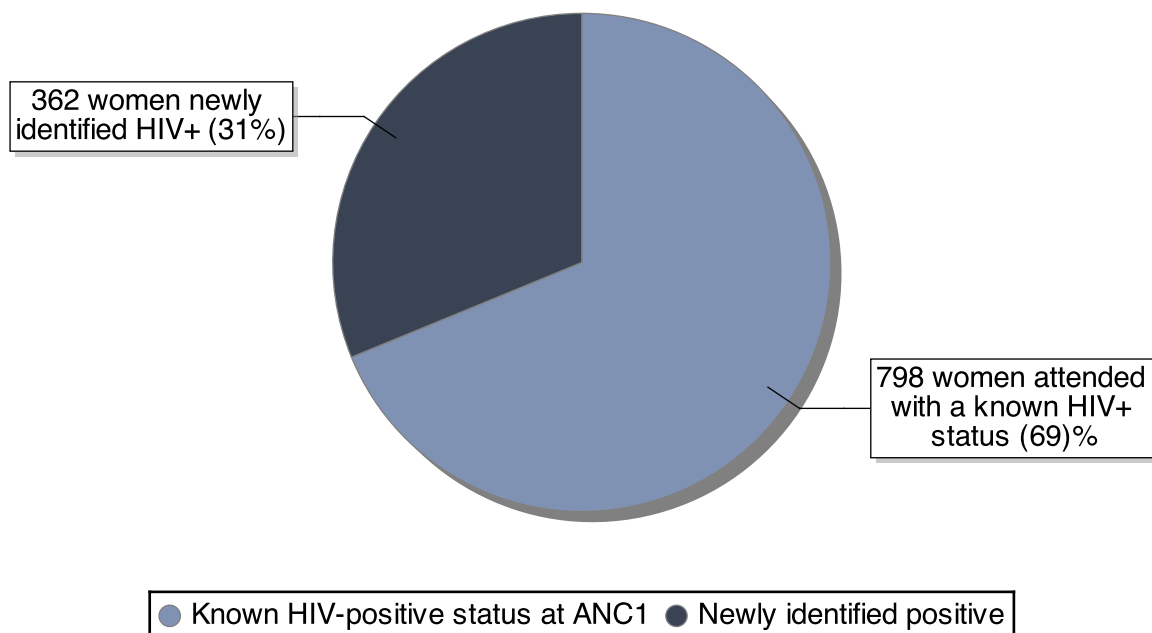
Ministry of Health Option B+ Weekly Report (3.2)

Week ending 2018-07-01 (2018W26)

ANC trends for the last 18 weeks



Break down of existing vs. newly identified infections



Ratio newly identified / already known status: 0.45

Ministry of Health Option B+ Weekly Report (3.2)

Week ending 2018-07-01 (2018W26)

District Service Delivery Focus

High HIV+ EID Testing

This section shows 20 districts with high proportions of HIV+ 1st PCR EID tests. Please consider both the actual number and the proportion.

District	# EID Tests	# Positive	% Positive
Amudat	3	1	33.33
Bududa	5	1	20.00
Buvuma	13	2	15.38
Abim	7	1	14.29
Amolatar	18	2	11.11
Kaberamaido	19	2	10.53
Agago	33	3	9.09
Butaleja	11	1	9.09
Adjumani	11	1	9.09
Kanungu	23	2	8.70
Alebtong	23	2	8.70
Lamwo	25	2	8.00
Lyantonde	38	3	7.89
Serere	38	3	7.89
Yumbe	13	1	7.69
Isingiro	56	4	7.14
Kasese	45	3	6.67
Mityana	78	5	6.41
Kyenjojo	95	6	6.32
Lwengo	48	3	6.25
Mayuge	33	2	6.06
Kabale	53	3	5.66
Dokolo	18	1	5.56
Apac	36	2	5.56
Kumi	19	1	5.26

Low initiation on ART

This section shows 15 districts with low ART initiation rates. Please consider the actual ART need in addition to the proportion.

District	ART Need	# Initiated	% Initiated
Kanungu	6	0	0
Bukedea	2	0	0
Buliisa	1	1	0
Kitgum	1	0	0
Soroti District	2	0	0
Amuria	2	0	0
Alebtong	1	0	0
Rakai District	3	0	0
Kyankwanzi	2	2	0
Moyo District	8	1	12
Adjumani	6	2	33
Jinja District	4	2	33
Kiruhura	5	2	40
Lwengo	6	3	50
Mbale District	4	2	50

Data Quality challenges by IP

'Overtesting'

IPs listed here have 'overtested' – which means that there are issues with data quality. Ensure that facilities have the latest version of the job aide, and that health workers understand that most indicators pertain to ANC1 visits only.

IP	# ANC1 Visits	# Tested	% Tested
RTI	86	84	117
TASO Teso	888	895	103
PREFA	1065	1026	102
IDI-KCC	1116	1051	101

'Overinitiating'

IPs listed here have 'overinitiated' – which means that there are issues with data quality. Ensure that facilities have the latest version of the job aide, and that health workers understand that most indicators pertain to ANC1 visits only.

IP	ART Need	# Initiated	% Initiated
IRCU	1	7	700
USAID PHS	1	7	700
RHITES-E	14	19	120

None of the proportions mentioned above should exceed 100%, as all proportions relate to ANC1 visits only. They take both women with a known positive status and women already on ART into consideration. Please see <http://reports.dhis2sms.ug> for further details, including detailed facility data.