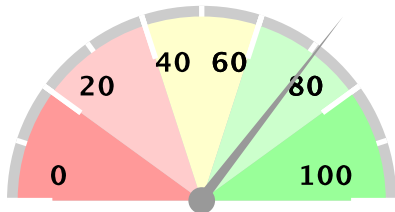


Ministry of Health Option B+ Weekly Report (3.2)

Week ending 2018-06-24 (2018W25)

Summary

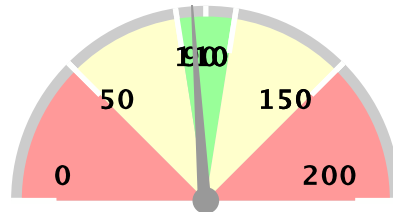
Weekly reporting rate



71%

1204 reports received out of 1696 registered facilities

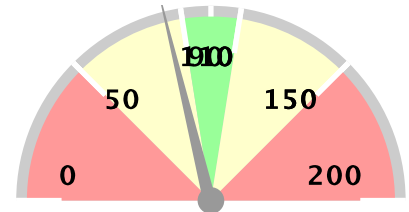
% of ANC1 attendees tested for HIV



96%

22386 ANC1 visits

% of women initiated on Option B+



85%

353 initiated on ART

Stockouts and missed appointments

Facilities without ARVs	15	1%
Facilities without test kits	54	4%
Number missed appointments	922	

1st PCR EID testing for August 2015*

Number of EID tests	4936
Number of positive EID tests	169
Proportion testing positive	3.42%

The week in numbers

Number of reports received this week 1204

Number of facilities registered for B+ 1696

Testing coverage for this week

Number of ANC 1 visits 22386

No. tested for HIV at ANC 1 92% 20594

No. HIV+ women identified at ANC 1 1259

Newly identified thru testing 30% 383

With a known status 70% 876

Proportion newly tested +ve at ANC 1 1.86%

Proportion of +ve women at ANC 1 5.62%

ART coverage for this week

Total HIV + Women at ANC 1 1259

Total already on ART 65% 820

Total to be initiated 72% 906

Total no of women initiated on ART 353

Proportion of women initiated on ART 257%

Proportion with known status already on ART 93.61%

This proportion shows how many women who have a known positive status are already on ART

The data as presented in this report using data from MoH/EOC Weekly Reporting and CPHL. PMTCT service delivery data is weekly data, EID testing data is cumulative monthly. EID number includes data up 2013-09-01. Starting from June 2014, EID data contains only 1st PCR tests.

Ministry of Health Option B+ Weekly Report (3.2)

Week ending 2018-06-24 (2018W25)

Overall performance per IP

Note: IP data does not add up to national totals due to the fact that IPs overlap in districts. EID data is aggregate for all districts in which an IP operates, and not based on individual facilities supported by an IP.

District and weekly rate				For Week ending 2018-06-24 (2018W25)									EID November 2015		Analysis		
Level	No of facilities reporting	No of registered facilities	Proportion of facilities reporting (reporting rate)	a. Total ANC1 visits	b. Total No of mothers tested at 1st ANC visit	c. Total No HIV Tested Positive at 1st ANC visit	d. Total No with known HIV+ status by ANC1	e. Total initiating Option B+ at 1st ANC visit	f. Total no on ART treatment by ANC1	h. Has Test Kits stockout	i. Has ARVs stockout	A. Number of EID tests carried out	B. Proportion of EID tests testing positive for HIV	1. Proportion of ANC1 with unknown status tested	2. Proportion of HIV+ women not yet on ART initiated	3. Proportion of women tested positive out of those tested	
Uganda	1195	1696	70%	22321	20503	380	874	350	818	55	15	4936	3.42%	96%	84%	1.85%	
Baylor	104	112	93%	1627	1353	24	65	23	60	8	1	402	4.48%	87%	79%	1.77%	
CAF	3	6	50%	7	4	0	3	0	3	0	0	1133	3.09%	100%	0%	0%	
CUAMM	35	63	56%	396	347	3	4	2	4	0	0	29	6.9%	89%	100%	0.86%	
HIWA	6	9	67%	65	60	2	3	2	3	0	0	1281	2.65%	97%	100%	3.33%	
IDI-KCC	7	7	100%	1162	1078	43	84	32	84	0	0	734	2.72%	100%	74%	3.99%	
IDI	199	199	100%	4235	4034	37	92	34	91	5	1	330	3.64%	97%	100%	0.92%	
IRCU	12	15	80%	377	367	9	10	8	10	0	0	1457	3.09%	100%	89%	2.45%	
Kalangala	3	15	20%	7	6	0	1	0	1	0	1	32	0%	100%	0%	0%	
Mildmay	134	155	86%	2615	2306	76	138	68	131	5	4	659	3.19%	93%	88%	3.3%	
MJAP	18	22	82%	663	592	20	42	15	41	1	0	896	3.12%	95%	68%	3.38%	
MRC-UVRI	1	1	100%	1	0	0	1	0	1	0	0	734	2.72%	0%	0%	N/A	
PREFA	79	106	75%	1117	1028	34	54	29	50	5	2	567	3.53%	97%	92%	3.31%	
Reach Out	5	7	71%	10	8	0	1	2	2	0	0	1085	3.04%	89%	-200%	0%	
RHITES-EC	83	121	69%	2093	1890	28	42	26	37	6	0	279	2.15%	92%	83%	1.48%	
RHITES-E	126	161	78%	2169	2023	21	29	18	31	9	2	183	2.19%	95%	92%	1.04%	
RHITES-SW	194	215	90%	2297	2112	36	105	39	111	13	3	648	3.55%	96%	113%	1.7%	
RHSP	8	15	53%	105	80	2	10	1	5	0	0	155	3.23%	84%	14%	2.5%	
RHU	0	1	0%									64	1.56%	null%	null%		
RTI	11	19	58%	92	97	5	12	5	12	0	0	2002	3.05%	121%	100%	5.15%	
SUSTAIN	12	12	100%	778	708	11	61	13	41	0	0	723	2.77%	99%	44%	1.55%	
TASO	50	65	77%	905	839	11	38	10	38	2	0	1672	3.11%	97%	87%	1.31%	
TASO Teso	66	93	71%	1054	1035	7	28	8	27	0	0	170	4.71%	101%	100%	0.68%	
UCMB	15	18	83%	470	442	9	23	7	21	0	0	1907	2.83%	99%	67%	2.04%	
UHMG	5	18	28%	37	36	1	1	1	1	0	0	1232	3.17%	100%	100%	2.78%	
UPMB	6	13	46%	104	83	0	2	0	2	0	0	1399	3.5%	81%	0%	0%	
USAID ASSIST	78	125	62%	1187	1116	28	56	27	55	4	0	569	3.69%	99%	93%	2.51%	
USAID PHS	30	39	77%	476	460	9	18	8	16	0	0	2064	3.29%	100%	80%	1.96%	

Ministry of Health Option B+ Weekly Report (3.2)

Week ending 2018-06-24 (2018W25)

District and weekly rate			For Week ending 2018-06-24 (2018W25)									EID November 2015		Analysis		
Level	No of facilities reporting	No of registered facilities	Proportion of facilities reporting (reporting rate)	a. Total ANC1 visits	b. Total No of mothers tested at 1st ANC visit	c. Total No HIV Tested Positive at 1st ANC visit	d. Total No with known HIV+ status by ANC1	e. Total initiating Option B+ at 1st ANC visit	f. Total no on ART treatment by ANC1	h. Has Test Kits stockout	i. Has ARVs stockout	A. Number of EID tests carried out	B. Proportion of EID tests testing positive for HIV	1. Proportion of ANC1 with unknown status tested	2. Proportion of HIV+ women not yet on ART initiated	3. Proportion of women tested positive out of those tested
Walter Reed	21	64	33%	368	339	4	24	3	14	1	1	39	5.13%	99%	50%	1.18%

EID data provided by CPHL up to 2015-12-10 cumulative for the entire month of November 2015

Overall performance per district

Note:

Ministry of Health Option B+ Weekly Report (3.2)

Week ending 2018-06-24 (2018W25)

District and weekly rate				For Week ending 2018-06-24 (2018W25)									EID November 2015		Analysis		
Level	No of facilities reporting	No of registered facilities	Proportion of facilities reporting (reporting rate)	a. Total ANC1 visits	b. Total No of mothers tested at 1st ANC visit	c. Total No HIV Tested Positive at 1st ANC visit	d. Total No with known HIV+ status by ANC1	e. Total initiating Option B+ at 1st ANC visit	f. Total no on ART treatment by ANC1	h. Has Test Kits stockout	i. Has ARVs stockout	A. Number of EID tests carried out	B. Proportion of EID tests testing positive for HIV	1. Proportion of ANC1 with unknown status tested	2. Proportion of HIV+ women not yet on ART initiated	3. Proportion of women tested positive out of those tested	
Uganda	1195	1696	70%	22321	20503	380	874	350	818	55	15	4936	3.42%	96%	84%	1.85%	
Abim	6	8	75%	37	35	1	2	1	2	0	0	7	14.29%	100%	100%	2.86%	
Adjumani	12	12	100%	139	133	2	3	2	3	1	0	11	9.09%	98%	100%	1.5%	
Agago	3	9	33%	71	69	1	5	1	3	0	0	33	9.09%	105%	33%	1.45%	
Alebong	6	7	86%	129	122	4	7	4	7	1	0	23	8.7%	100%	100%	3.28%	
Amolatar	4	5	80%	101	99	1	2	1	2	0	0	18	11.11%	100%	100%	1.01%	
Amudat	3	4	75%	39	39	1	0	1	0	0	0	3	33.33%	100%	100%	2.56%	
Amuria	12	14	86%	199	201	1	6	1	6	0	0	26	0%	104%	100%	0.5%	
Amuru	1	8	12%	15						0	0	8	0%	null%	0%		
Apac	8	12	67%	148	140	3	4	3	4	0	0	36	5.56%	97%	100%	2.14%	
Arua	40	42	95%	718	707	3	1	2	1	3	1	54	1.85%	99%	100%	0.42%	
Budaka	8	14	57%	134	133	3	1	3	2	0	0	7	0%	100%	150%	2.26%	
Bududa	5	8	62%	67	52	0	3	0	3	1	0	5	20%	81%	0%	0%	
Bugiri	12	15	80%	355	322	4	7	2	6	0	0	38	2.63%	93%	67%	1.24%	
Buhweju	6	6	100%	70	65	0	2	0	3	1	0	5	0%	96%	0%	0%	
Buikwe	12	32	38%	191	182	1	22	3	13	0	0			108%	0%	0.55%	
Bukedea	4	8	50%	104	103	1	1	1	1	0	0	14	0%	100%	100%	0.97%	
Bukwo	5	5	100%	48	56	0	0	0	0	0	0			117%	0%	0%	
Buliisa	8	8	100%	125	120	1	5	1	5	0	0	9	0%	100%	0%	0.83%	
Bundibugyo	10	11	91%	154	143	1	0	1	0	1	0	4	0%	93%	100%	0.7%	
Bushenyi	13	18	72%	116	106	3	9	3	9	0	0	64	1.56%	99%	100%	2.83%	
Busia	9	12	75%	237	229	6	5	6	4	0	0	29	0%	99%	86%	2.62%	
Butaleja	9	13	69%	141	129	0	0	0	0	1	0	11	9.09%	91%	0%	0%	
Buvuma	4	10	40%	44	28	0	2	0	2	1	1	13	15.38%	67%	0%	0%	
Buyende	5	9	56%	165	130	1	6	1	5	1	0			82%	50%	0.77%	
Dokolo	5	5	100%	88	82	4	6	3	5	0	0	18	5.56%	100%	60%	4.88%	
Gulu	8	14	57%	183	172	4	11	4	11	0	0	115	1.74%	100%	100%	2.33%	
Hoima	24	26	92%	616	570	11	22	11	22	0	0	78	3.85%	96%	100%	1.93%	
Ibanda	10	10	100%	165	149	2	7	2	7	1	0	31	0%	94%	100%	1.34%	
Iganga	10	17	59%	262	248	4	4	3	4	2	0	47	2.13%	96%	71%	1.61%	
Isingiro	25	26	96%	317	257	0	18	0	18	2	1	56	7.14%	86%	0%	0%	
Jinja	15	23	65%	356	312	5	30	5	10	0	0	83	3.61%	96%	20%	1.6%	

Ministry of Health Option B+ Weekly Report (3.2)

Week ending 2018-06-24 (2018W25)

District and weekly rate				For Week ending 2018-06-24 (2018W25)									EID null		Analysis		
Level	No of facilities reporting	No of registered facilities	Proportion of facilities reporting (reporting rate)	a. Total ANC1 visits	b. Total No of mothers tested at 1st ANC visit	c. Total No HIV Tested Positive at 1st ANC visit	d. Total No with known HIV+ status by ANC1	e. Total initiating Option B+ at 1st ANC visit	f. Total no on ART treatment by ANC1	h. Has Test Kits stockout	i. Has ARVs stockout	A. Number of EID tests carried out	B. Proportion of EID tests testing positive for HIV	1. Proportion of ANC1 with unknown status tested	2. Proportion of HIV+ women not yet on ART initiated	3. Proportion of women tested positive out of those tested	
Kaabong	4	13	31%	59	50	0	0	0	0	0	0			85%	0%	0%	
Kabale	26	27	96%	218	209	1	9	1	9	0	0	53	5.66%	100%	100%	0.48%	
Kabarole	22	25	88%	255	222	8	20	7	19	1	0	154	3.25%	94%	78%	3.6%	
Kaberamaido	5	12	42%	121	116	0	4	1	3	0	0	19	10.53%	99%	100%	0%	
Kagadi	11	11	100%	385	338	2	16	1	16	1	0			92%	100%	0.59%	
Kakumiro	8	8	100%	253	246	4	5	2	5	0	0			99%	67%	1.63%	
Kalangala	3	15	20%	7	6	0	1	0	1	0	1	32	0%	100%	0%	0%	
Kaliro	4	6	67%	139	73	0	1	0	1	0	0	9	0%	53%	0%	0%	
Kalungu	10	16	62%	108	81	5	5	4	5	1	0	49	0%	79%	80%	6.17%	
Kampala	29	40	72%	1898	1755	58	127	47	128	0	0	734	2.72%	99%	83%	3.3%	
Kamuli	16	17	94%	384	373	5	7	5	7	0	0	29	0%	99%	100%	1.34%	
Kamwenge	14	15	93%	230	208	7	9	5	9	1	0	58	3.45%	94%	71%	3.37%	
Kanungu	15	17	88%	138	123	4	7	4	16	1	2	23	8.7%	94%	-50%	3.25%	
Kasese	37	40	92%	538	490	2	13	3	8	2	0	45	6.67%	93%	43%	0.41%	
Katakwi	11	12	92%	145	125	2	5	2	5	0	0			89%	100%	1.6%	
Kayunga	7	11	64%	199	190	2	9	2	8	0	0	26	0%	100%	67%	1.05%	
Kibaale	6	6	100%	109	97	0	4	0	4	0	0	59	5.08%	92%	0%	0%	
Kiboga	8	8	100%	156	137	3	9	3	9	0	0	21	4.76%	93%	100%	2.19%	
Kibuku	11	11	100%	221	193	1	1	2	0	3	2	3	0%	88%	100%	0.52%	
Kiruhura	19	21	90%	217	208	6	15	14	16	0	0	51	3.92%	103%	280%	2.88%	
Kiryandongo	11	11	100%	287	258	2	7	2	7	0	0	24	4.17%	92%	100%	0.78%	
Kisoro	20	20	100%	237	225	3	2	3	1	3	0	26	0%	96%	75%	1.33%	
Kitgum	7	12	58%	97	88	4	9	4	9	1	0	59	0%	100%	100%	4.55%	
Koboko	8	8	100%	169	165	1	4	1	4	0	0	13	0%	100%	0%	0.61%	
Kole	3	5	60%	42	41	2	2	2	2	0	0	13	0%	102%	100%	4.88%	
Kotido	6	16	38%	88	53	0	0	0	0	0	0	4	0%	60%	0%	0%	
Kumi	6	9	67%	124	120	0	4	0	4	0	0	19	5.26%	100%	0%	0%	
Kyankwanzi	8	12	67%	175	138	5	8	5	8	1	0	16	0%	83%	100%	3.62%	
Kyegegwa	9	9	100%	281	158	3	10	3	10	1	0	41	4.88%	58%	100%	1.9%	
Kyenjojo	16	18	89%	257	193	4	17	5	18	2	1	95	6.32%	80%	167%	2.07%	
Lamwo	6	9	67%	37	26	0	3	0	3	0	0	25	8%	76%	0%	0%	
Lira	8	19	42%	159	171	2	7	2	7	0	0	96	5.21%	112%	100%	1.17%	

Ministry of Health Option B+ Weekly Report (3.2)

Week ending 2018-06-24 (2018W25)

District and weekly rate				For Week ending 2018-06-24 (2018W25)									EID November 2015		Analysis		
Level	No of facilities reporting	No of registered facilities	Proportion of facilities reporting (reporting rate)	a. Total ANC1 visits	b. Total No of mothers tested at 1st ANC visit	c. Total No HIV Tested Positive at 1st ANC visit	d. Total No with known HIV+ status by ANC1	e. Total initiating Option B+ at 1st ANC visit	f. Total no on ART treatment by ANC1	h. Has Test Kits stockout	i. Has ARVs stockout	A. Number of EID tests carried out	B. Proportion of EID tests testing positive for HIV	1. Proportion of ANC1 with unknown status tested	2. Proportion of HIV+ women not yet on ART initiated	3. Proportion of women tested positive out of those tested	
Luuka	5	7	71%	88	88	0	0	0	0	0	0	4	0%	100%	0%	0%	
Luweero	26	57	46%	447	431	14	21	12	22	1	0	99	2.02%	101%	91%	3.25%	
Lwengo	8	13	62%	138	127	4	8	3	8	1	0	48	6.25%	98%	67%	3.15%	
Lyantonde	1	2	50%	3	2	0	1	0	1	0	0	38	7.89%	100%	0%	0%	
Manafwa	5	12	42%	74	74	0	0	0	0	1	0	8	0%	100%	0%	0%	
Maracha	10	10	100%	173	172	1	1	1	1	1	0			100%	100%	0.58%	
Masaka	14	21	67%	102	81	3	16	3	10	2	2	97	3.09%	94%	67%	3.7%	
Masindi	13	14	93%	320	308	6	12	6	11	0	0			100%	100%	1.95%	
Mayuge	9	14	64%	195	186	4	4	4	3	2	0	33	6.06%	97%	67%	2.15%	
Mbale	26	33	79%	390	372	11	12	9	14	1	0	59	1.69%	98%	100%	2.96%	
Mbarara	19	45	42%	280	252	11	16	6	15	1	0	162	4.94%	95%	55%	4.37%	
Mitooma	7	9	78%	91	89	1	2	1	2	0	0	10	0%	100%	100%	1.12%	
Mityana	23	26	88%	258	229	8	17	9	15	2	3	78	6.41%	95%	90%	3.49%	
Moroto	5	12	42%	41	40	0	2	0	2	0	0	5	0%	103%	0%	0%	
Moyo	14	14	100%	76	68	0	0	0	0	0	0	6	0%	89%	0%	0%	
Mpigi	1	2	50%	26	29	0	2	0	2	0	0	67	2.99%	121%	0%	0%	
Mubende	18	23	78%	493	396	9	20	7	18	1	1	138	0%	84%	75%	2.27%	
Mukono	3	22	14%	63	60	3	2	2	2	0	0			98%	67%	5%	
Nakapiripirit	8	14	57%	110	110	1	0	0	0	0	0	4	0%	100%	0%	0.91%	
Nakaseke	9	15	60%	171	159	11	11	9	8	0	0	33	3.03%	99%	67%	6.92%	
Nakasongola	11	24	46%	122	116	1	4	1	5	0	0	22	4.55%	98%	0%	0.86%	
Namayingo	8	20	40%	123	102	3	2	3	2	1	0	26	3.85%	84%	100%	2.94%	
Namisindwa	5	18	28%	80	80	0	0	0	0	0	0			100%	0%	0%	
Namutumba	6	7	86%	175	172	4	3	4	2	0	0			100%	80%	2.33%	
Napak	5	8	62%	60	58	0	1	0	1	0	0	6	0%	98%	0%	0%	
Nebbi	12	12	100%	342	326	4	15	4	14	0	0	40	2.5%	100%	80%	1.23%	
Ngora	8	8	100%	100	96	0	5	0	5	0	0	12	0%	101%	0%	0%	
Ntoroko	3	4	75%	39	39	0	0	0	0	0	0	5	0%	100%	0%	0%	
Ntungamo	14	17	82%	249	236	2	8	2	6	1	0	39	2.56%	98%	50%	0.85%	
Nwoya	4	7	57%	73	57	0	5	0	5	1	0	25	0%	84%	0%	0%	
Omoro	2	6	33%	18	18	1	0	1	0	0	0			100%	100%	5.56%	
Otuke	6	7	86%	109	104	2	5	2	5	0	0	10	0%	100%	100%	1.92%	

Ministry of Health Option B+ Weekly Report (3.2)

Week ending 2018-06-24 (2018W25)

District and weekly rate				For Week ending 2018-06-24 (2018W25)									EID November 2015		Analysis		
Level	No of facilities reporting	No of registered facilities	Proportion of facilities reporting (reporting rate)	a. Total ANC1 visits	b. Total No of mothers tested at 1st ANC visit	c. Total No HIV Tested Positive at 1st ANC visit	d. Total No with known HIV+ status by ANC1	e. Total initiating Option B+ at 1st ANC visit	f. Total no on ART treatment by ANC1	h. Has Test Kits stockout	i. Has ARVs stockout	A. Number of EID tests carried out	B. Proportion of EID tests testing positive for HIV	1. Proportion of ANC1 with unknown status tested	2. Proportion of HIV+ women not yet on ART initiated	3. Proportion of women tested positive out of those tested	
Oyam	7	7	100%	188	180	3	8	3	8	0	0	40	0%	100%	100%	1.67%	
Pader	7	11	64%	41	38	3	3	3	3	1	0	50	4%	100%	100%	7.89%	
Pakwach	9	9	100%	213	203	1	9	1	10	0	0			100%	0%	0.49%	
Pallisa	15	19	79%	314	306	2	1	1	1	1	0	12	0%	98%	50%	0.65%	
Rakai	8	15	53%	105	80	2	10	1	5	0	0	155	3.23%	84%	14%	2.5%	
Rubirizi	5	8	62%	35	35	0	2	0	2	1	0	16	0%	106%	0%	0%	
Rukungiri	16	20	80%	170	163	2	9	2	7	2	0	61	1.64%	101%	60%	1.23%	
Serere	12	14	86%	156	173	1	1	1	1	0	0	38	7.89%	112%	100%	0.58%	
Sheema	9	9	100%	107	97	3	10	3	9	0	0	51	1.96%	100%	100%	3.09%	
Sironko	14	16	88%	213	210	2	4	2	4	0	0	10	0%	100%	100%	0.95%	
Soroti	11	21	52%	156	150	4	4	4	4	0	0	42	4.76%	99%	100%	2.67%	
Tororo	20	49	41%	413	379	3	6	2	6	1	0	59	1.69%	93%	67%	0.79%	
Wakiso	55	81	68%	1201	1097	41	74	37	72	0	0	252	4.37%	97%	92%	3.74%	
Yumbe	13	13	100%	455	452	2	3	3	3	0	0	13	7.69%	100%	150%	0.44%	
Zombo	10	11	91%	258	254	3	4	3	4	0	0	23	4.35%	100%	100%	1.18%	

EID data provided by CPHL up to 2015-12-10 cumulative for the entire month of November 2015

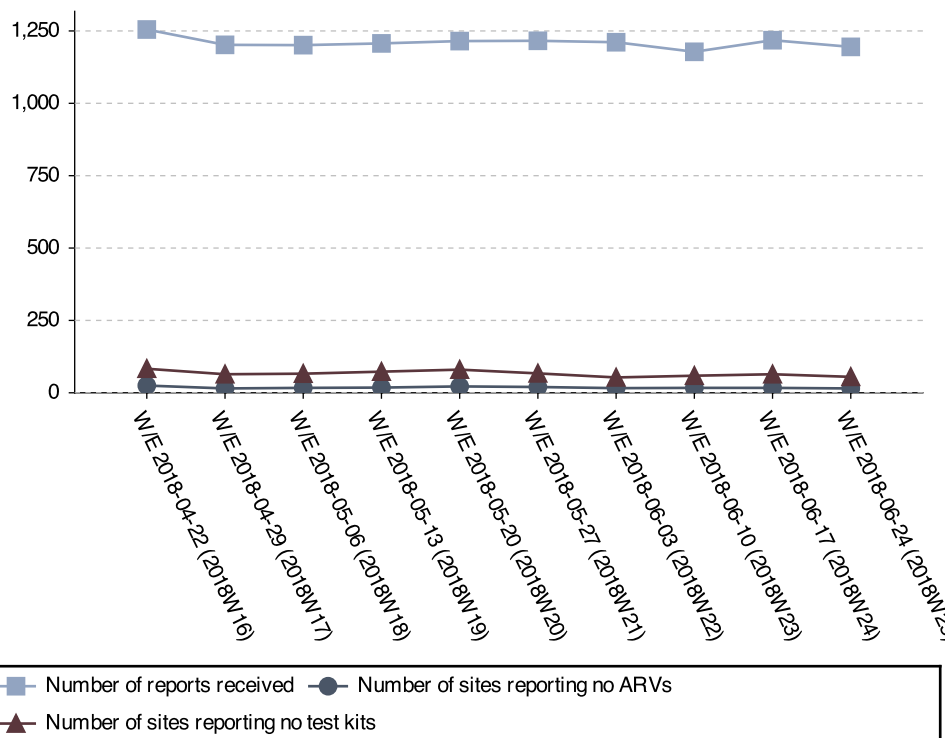
Ministry of Health Option B+ Weekly Report (3.2)

Week ending 2018-06-24 (2018W25)

Stock-outs for the last 6 weeks per facility level

	2018W25		2018W24		2018W23		2018W22		2018W21		2018W20	
	ARVs	HIV Test kits	ARVs	HIV Test kits	ARVs	HIV Test kits	ARVs	HIV Test kits	ARVs	HIV Test kits	ARVs	HIV Test kits
Clinic	0	0	0	0	0	0	0	0	0	0	0	0
General Hospital	1	1	1	2	1	2	0	1	0	1	0	4
HC II	1	19	1	18	2	19	4	19	1	18	1	20
HC III	12	37	14	43	12	38	11	31	18	43	20	56
HC IV	1	1	1	4	2	2	1	2	1	8	1	6
NR Hospital	0	0	0	0	0	0	0	0	0	0	0	0
Other/unknown	0	0	0	0	0	0	0	1	0	1	0	1
RR Hospital	0	0	0	1	0	0	0	0	0	0	0	0
Total	15	58	17	68	17	61	16	54	20	71	22	87

Stock-out trends for the last 10 weeks



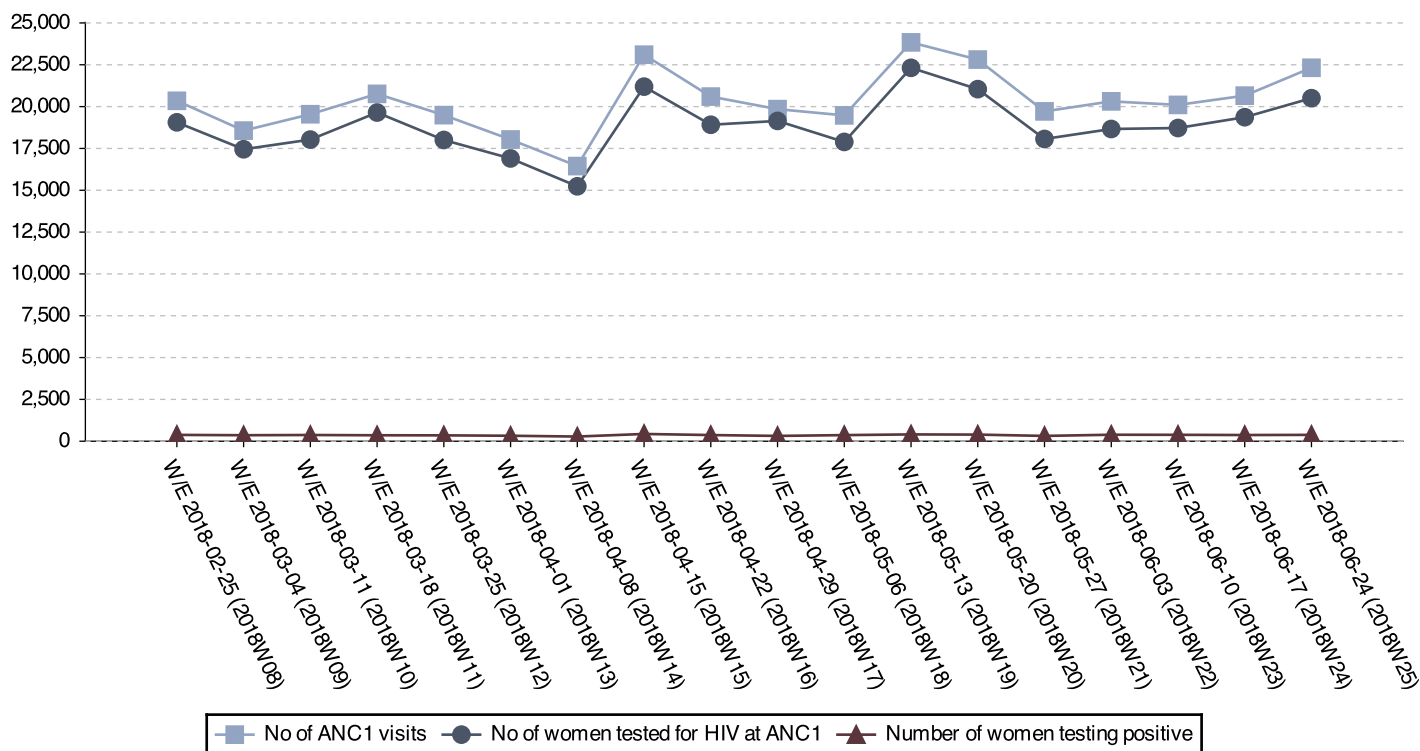
Current stock-outs per IP

IP	Test kit stockout	ARV stockout
RHITES-SW	13	3
RHITES-E	9	2
Baylor	8	1
RHITES-EC	6	0
PREFA	5	2
Mildmay	5	4
IDI	5	1
USAID ASSIST	4	0
TASO	2	0
Walter Reed	1	1
MJAP	1	0
Kalangala	0	1
Total	59	15

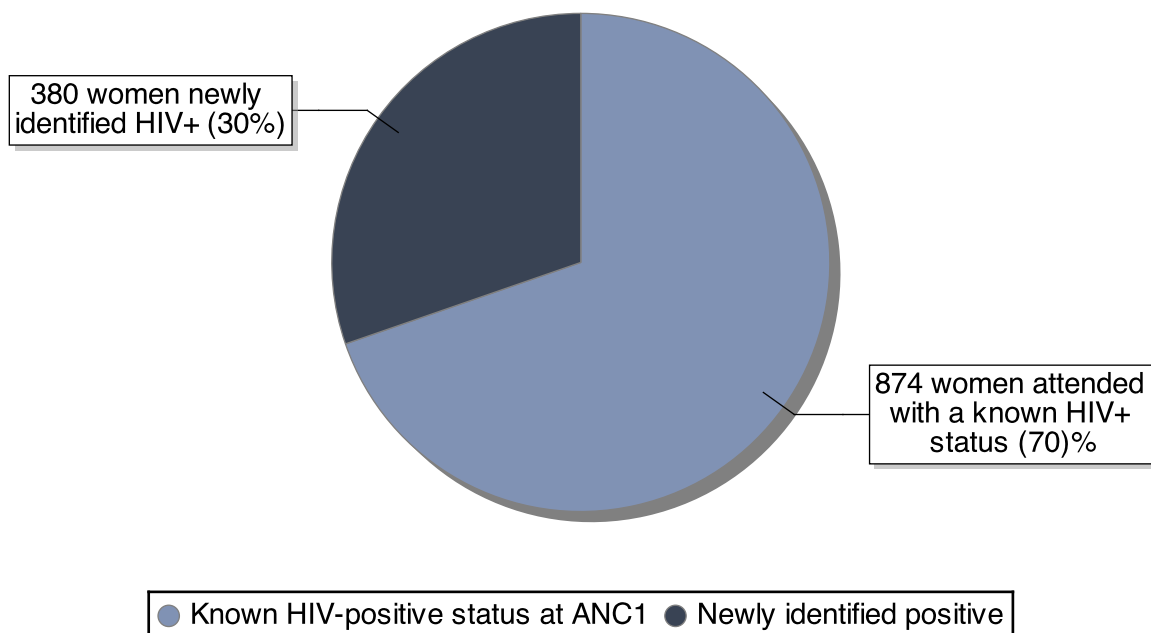
Ministry of Health Option B+ Weekly Report (3.2)

Week ending 2018-06-24 (2018W25)

ANC trends for the last 18 weeks



Break down of existing vs. newly identified infections



Ratio newly identified / already known status: 0.43

Ministry of Health Option B+ Weekly Report (3.2)

Week ending 2018-06-24 (2018W25)

District Service Delivery Focus

High HIV+ EID Testing

This section shows 20 districts with high proportions of HIV+ 1st PCR EID tests. Please consider both the actual number and the proportion.

District	# EID Tests	# Positive	% Positive
Amudat	3	1	33.33
Bududa	5	1	20.00
Buvuma	13	2	15.38
Abim	7	1	14.29
Amolatar	18	2	11.11
Kaberaido	19	2	10.53
Agago	33	3	9.09
Butaleja	11	1	9.09
Adjumani	11	1	9.09
Kanungu	23	2	8.70
Alebtong	23	2	8.70
Lamwo	25	2	8.00
Lyantonde	38	3	7.89
Serere	38	3	7.89
Yumbe	13	1	7.69
Isingiro	56	4	7.14
Kasese	45	3	6.67
Mityana	78	5	6.41
Kyenjojo	95	6	6.32
Lwengo	48	3	6.25
Mayuge	33	2	6.06
Kabale	53	3	5.66
Dokolo	18	1	5.56
Apac	36	2	5.56
Kumi	19	1	5.26

Low initiation on ART

This section shows 15 districts with low ART initiation rates. Please consider the actual ART need in addition to the proportion.

District	ART Need	# Initiated	% Initiated
Buikwe	10	3	0
Buliisa	1	1	0
Nakapiripirit	1	0	0
Koboko	1	1	0
Rakai District	7	1	14
Jinja District	25	5	20
Agago	3	1	33
Kasese	7	3	43
Pallisa	2	1	50
Buyende	2	1	50
Ntungamo	4	2	50
Mbarara	12	6	55
Rukungiri	4	2	60
Dokolo	5	3	60
Nakaseke	14	9	67

Data Quality challenges by IP

'Overtesting'

IPs listed here have 'overtested' – which means that there are issues with data quality. Ensure that facilities have the latest version of the job aide, and that health workers understand that most indicators pertain to ANC1 visits only.

IP	# ANC1 Visits	# Tested	% Tested
RTI	92	97	121
TASO Teso	1054	1035	101

'Overinitiating'

IPs listed here have 'overinitiated' – which means that there are issues with data quality. Ensure that facilities have the latest version of the job aide, and that health workers understand that most indicators pertain to ANC1 visits only.

IP	ART Need	# Initiated	% Initiated
RHITES-SW	30	39	113

None of the proportions mentioned above should exceed 100%, as all proportions relate to ANC1 visits only. They take both women with a known positive status and women already on ART into consideration. Please see <http://reports.dhis2sms.ug> for further details, including detailed facility data.