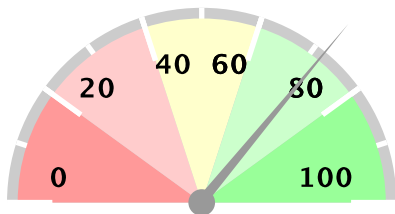


Ministry of Health Option B+ Weekly Report (3.2)

Week ending 2018-06-17 (2018W24)

Summary

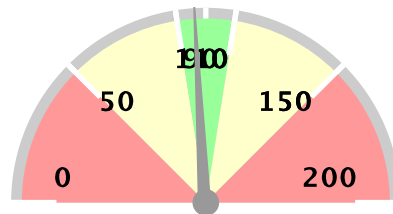
Weekly reporting rate



72%

1225 reports received out of 1696 registered facilities

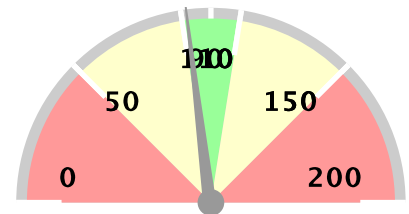
% of ANC1 attendees tested for HIV



97%

20792 ANC1 visits

% of women initiated on Option B+



92%

354 initiated on ART

Stockouts and missed appointments

Facilities without ARVs	17	1%
Facilities without test kits	64	5%
Number missed appointments	1009	

1st PCR EID testing for August 2015*

Number of EID tests	4936
Number of positive EID tests	169
Proportion testing positive	3.42%

The week in numbers

Number of reports received this week 1225

Number of facilities registered for B+ 1696

Testing coverage for this week

Number of ANC 1 visits	20792
No. tested for HIV at ANC 1	94% 19470
No. HIV+ women identified at ANC 1	1133
Newly identified thru testing	33% 370
With a known status	67% 763
Proportion newly tested +ve at ANC 1	1.90%
Proportion of +ve women at ANC 1	5.45%

ART coverage for this week

Total HIV + Women at ANC 1	1133
Total already on ART	65% 737
Total to be initiated	69% 779
Total no of women initiated on ART	354
Proportion of women initiated on ART	220%
Proportion with known status already on ART	96.59%

This proportion shows how many women who have a known positive status are already on ART

The data as presented in this report using data from MoH/EOC Weekly Reporting and CPHL. PMTCT service delivery data is weekly data, EID testing data is cumulative monthly. EID number includes data up 2013-09-01. Starting from June 2014, EID data contains only 1st PCR tests.

Ministry of Health Option B+ Weekly Report (3.2)

Week ending 2018-06-17 (2018W24)

Overall performance per IP

Note: IP data does not add up to national totals due to the fact that IPs overlap in districts. EID data is aggregate for all districts in which an IP operates, and not based on individual facilities supported by an IP.

District and weekly rate				For Week ending 2018-06-17 (2018W24)									EID November 2015		Analysis		
Level	No of facilities reporting	No of registered facilities	Proportion of facilities reporting (reporting rate)	a. Total ANC1 visits	b. Total No of mothers tested at 1st ANC visit	c. Total No HIV Tested Positive at 1st ANC visit	d. Total No with known HIV+ status by ANC1	e. Total initiating Option B+ at 1st ANC visit	f. Total no on ART treatment by ANC1	h. Has Test Kits stockout	i. Has ARVs stockout	A. Number of EID tests carried out	B. Proportion of EID tests testing positive for HIV	1. Proportion of ANC1 with unknown status tested	2. Proportion of HIV+ women not yet on ART initiated	3. Proportion of women tested positive out of those tested	
Uganda	1218	1716	71%	20654	19366	370	766	354	740	64	17	4936	3.42%	97%	92%	1.91%	
Baylor	106	112	95%	1786	1558	32	75	31	72	12	1	402	4.48%	91%	89%	2.05%	
CAF	2	6	33%	11	6	0	5	0	5	0	0	1133	3.09%	100%	0%	0%	
CUAMM	36	63	57%	426	398	2	2	2	2	0	0	29	6.9%	94%	100%	0.5%	
HIWA	7	9	78%	68	61	2	4	1	4	0	0	1281	2.65%	95%	100%	3.28%	
IDI-KCC	7	7	100%	971	903	34	63	34	61	0	0	734	2.72%	99%	94%	3.77%	
IDI	198	199	99%	3544	3415	40	80	37	77	6	1	330	3.64%	99%	90%	1.17%	
IRCU	12	15	80%	313	295	4	15	5	15	0	0	1457	3.09%	99%	122%	1.36%	
Kalangala	3	15	20%	4	12	0	1	0	0	0	0	32	0%	400%	0%	0%	
Mildmay	133	155	86%	2402	2169	72	99	68	96	11	8	659	3.19%	94%	91%	3.32%	
MJAP	20	22	91%	628	553	12	57	11	54	0	0	896	3.12%	97%	64%	2.17%	
MRC-UVRI	1	1	100%	1	1	0	0	0	0	0	0	734	2.72%	100%	0%	0%	
PREFA	82	106	77%	986	937	33	38	29	38	6	6	567	3.53%	99%	89%	3.52%	
Reach Out	5	7	71%	16	8	0	8	0	8	0	0	1085	3.04%	100%	0%	0%	
RHITES-EC	80	121	66%	1751	1649	24	27	24	29	4	0	279	2.15%	96%	104%	1.46%	
RHITES-E	126	161	78%	1984	1965	17	28	16	25	6	2	183	2.19%	100%	91%	0.87%	
RHITES-SW	202	215	94%	2330	2122	47	116	50	111	15	3	648	3.55%	96%	91%	2.21%	
RHSP	18	35	51%	181	160	4	12	4	12	1	0	155	3.23%	95%	100%	2.5%	
RHU	0	1	0%									64	1.56%	null%	null%		
RTI	12	19	63%	81	76	1	4	1	7	1	0	2002	3.05%	99%	-20%	1.32%	
SUSTAIN	12	12	100%	638	587	11	51	11	45	1	0	723	2.77%	100%	65%	1.87%	
TASO	52	65	80%	870	878	14	37	14	39	1	0	1672	3.11%	105%	127%	1.59%	
TASO Teso	63	93	68%	992	981	14	22	13	22	0	0	170	4.71%	101%	100%	1.43%	
UCMB	13	18	72%	447	426	7	22	7	22	0	0	1907	2.83%	100%	100%	1.64%	
UHMG	6	18	33%	44	44	1	1	1	0	0	0	1232	3.17%	102%	67%	2.27%	
UPMB	8	13	62%	128	123	0	5	0	4	0	0	1399	3.5%	100%	0%	0%	
USAID ASSIST	83	125	66%	1342	1314	19	52	19	54	3	0	569	3.69%	102%	136%	1.45%	
USAID PHS	30	39	77%	379	353	5	19	6	20	1	0	2064	3.29%	98%	118%	1.42%	

Ministry of Health Option B+ Weekly Report (3.2)

Week ending 2018-06-17 (2018W24)

District and weekly rate			For Week ending 2018-06-17 (2018W24)									EID November 2015		Analysis		
Level	No of facilities reporting	No of registered facilities	Proportion of facilities reporting (reporting rate)	a. Total ANC1 visits	b. Total No of mothers tested at 1st ANC visit	c. Total No HIV Tested Positive at 1st ANC visit	d. Total No with known HIV+ status by ANC1	e. Total initiating Option B+ at 1st ANC visit	f. Total no on ART treatment by ANC1	h. Has Test Kits stockout	i. Has ARVs stockout	A. Number of EID tests carried out	B. Proportion of EID tests testing positive for HIV	1. Proportion of ANC1 with unknown status tested	2. Proportion of HIV+ women not yet on ART initiated	3. Proportion of women tested positive out of those tested
Walter Reed	20	64	31%	339	330	12	6	6	2	0	0	39	5.13%	99%	43%	3.64%

EID data provided by CPHL up to 2015-12-10 cumulative for the entire month of November 2015

Overall performance per district

Note:

Ministry of Health Option B+ Weekly Report (3.2)

Week ending 2018-06-17 (2018W24)

District and weekly rate				For Week ending 2018-06-17 (2018W24)									EID November 2015		Analysis		
Level	No of facilities reporting	No of registered facilities	Proportion of facilities reporting (reporting rate)	a. Total ANC1 visits	b. Total No of mothers tested at 1st ANC visit	c. Total No HIV Tested Positive at 1st ANC visit	d. Total No with known HIV+ status by ANC1	e. Total initiating Option B+ at 1st ANC visit	f. Total no on ART treatment by ANC1	h. Has Test Kits stockout	i. Has ARVs stockout	A. Number of EID tests carried out	B. Proportion of EID tests testing positive for HIV	1. Proportion of ANC1 with unknown status tested	2. Proportion of HIV+ women not yet on ART initiated	3. Proportion of women tested positive out of those tested	
Uganda	1218	1716	71%	20654	19366	370	766	354	740	64	17	4936	3.42%	97%	92%	1.91%	
Abim	6	8	75%	39	36	2	2	2	2	0	0	7	14.29%	97%	100%	5.56%	
Adjumani	12	12	100%	121	120	1	2	1	1	0	0	11	9.09%	101%	50%	0.83%	
Agago	4	9	44%	93	92	2	5	2	5	0	0	33	9.09%	105%	100%	2.17%	
Alebong	7	7	100%	120	119	1	1	1	1	0	0	23	8.7%	100%	100%	0.84%	
Amolatar	5	5	100%	126	123	2	3	2	0	0	0	18	11.11%	100%	40%	1.63%	
Amudat	2	4	50%	27	27	0	0	0	0	0	0	3	33.33%	100%	0%	0%	
Amuria	11	14	79%	204	190	0	8	0	8	0	0	26	0%	97%	0%	0%	
Amuru	2	8	25%	17	17	0	0	0	0	0	0	8	0%	100%	0%	0%	
Apac	12	12	100%	218	200	1	7	1	7	0	0	36	5.56%	95%	100%	0.5%	
Arua	40	42	95%	525	547	4	2	3	2	2	1	54	1.85%	105%	67%	0.73%	
Budaka	10	14	71%	90	90	1	0	0	0	0	0	7	0%	100%	0%	1.11%	
Bududa	4	8	50%	45	34	0	1	1	1	1	0	5	20%	77%	0%	0%	
Bugiri	9	15	60%	206	213	2	4	2	4	0	0	38	2.63%	105%	100%	0.94%	
Buhweju	6	6	100%	40	38	3	1	0	3	1	0	5	0%	97%	0%	7.89%	
Buikwe	14	32	44%	237	225	8	11	7	9	0	0			100%	88%	3.56%	
Bukedea	4	8	50%	102	106	2	1	2	1	0	0	14	0%	105%	100%	1.89%	
Bukwo	5	5	100%	71	76	0	0	0	0	0	1			107%	0%	0%	
Buliisa	8	8	100%	159	152	2	5	2	5	0	0	9	0%	99%	0%	1.32%	
Bundibugyo	10	11	91%	193	185	5	2	5	2	1	1	4	0%	97%	100%	2.7%	
Bushenyi	14	18	78%	134	127	2	7	2	7	0	0	64	1.56%	100%	100%	1.57%	
Busia	8	12	67%	195	198	5	3	2	3	0	0	29	0%	103%	40%	2.53%	
Butaleja	9	13	69%	183	161	0	1	0	1	1	0	11	9.09%	88%	0%	0%	
Buvuma	2	10	20%	20	17	0	0	0	0	0	0	13	15.38%	85%	0%	0%	
Buyende	3	9	33%	84	73	1	2	1	1	0	0			89%	50%	1.37%	
Dokolo	5	5	100%	68	62	1	7	1	7	0	0	18	5.56%	102%	100%	1.61%	
Gulu	8	14	57%	171	151	2	19	3	19	0	0	115	1.74%	99%	150%	1.32%	
Hoima	24	26	92%	641	599	3	22	3	22	2	0	78	3.85%	97%	100%	0.5%	
Ibanda	10	10	100%	142	89	5	6	4	5	2	0	31	0%	65%	67%	5.62%	
Iganga	12	17	71%	211	199	4	4	4	5	2	0	47	2.13%	96%	200%	2.01%	
Isingiro	26	26	100%	294	274	4	10	4	10	1	0	56	7.14%	96%	100%	1.46%	
Jinja	15	23	65%	282	275	2	7	2	1	1	0	83	3.61%	100%	25%	0.73%	

Ministry of Health Option B+ Weekly Report (3.2)

Week ending 2018-06-17 (2018W24)

District and weekly rate				For Week ending 2018-06-17 (2018W24)									EID null		Analysis		
Level	No of facilities reporting	No of registered facilities	Proportion of facilities reporting (reporting rate)	a. Total ANC1 visits	b. Total No of mothers tested at 1st ANC visit	c. Total No HIV Tested Positive at 1st ANC visit	d. Total No with known HIV+ status by ANC1	e. Total initiating Option B+ at 1st ANC visit	f. Total no on ART treatment by ANC1	h. Has Test Kits stockout	i. Has ARVs stockout	A. Number of EID tests carried out	B. Proportion of EID tests testing positive for HIV	1. Proportion of ANC1 with unknown status tested	2. Proportion of HIV+ women not yet on ART initiated	3. Proportion of women tested positive out of those tested	
Kaabong	6	13	46%	54	43	0	0	0	0	0	0			80%	0%	0%	
Kabale	26	27	96%	233	225	2	5	2	5	0	0	53	5.66%	99%	100%	0.89%	
Kabarole	22	25	88%	199	167	8	19	9	18	1	0	154	3.25%	93%	100%	4.79%	
Kaberamaido	6	12	50%	78	74	4	4	4	3	0	0	19	10.53%	100%	80%	5.41%	
Kagadi	11	11	100%	343	326	4	17	3	17	0	0			100%	100%	1.23%	
Kakumiro	8	8	100%	324	313	6	11	6	11	1	0			100%	100%	1.92%	
Kalangala	3	15	20%	4	12	0	1	0	0	0	0	32	0%	400%	0%	0%	
Kaliro	4	6	67%	137	125	0	1	1	1	0	0	9	0%	92%	0%	0%	
Kalungu	8	16	50%	48	41	1	7	1	7	1	0	49	0%	100%	100%	2.44%	
Kampala	29	40	72%	1595	1462	46	113	47	111	1	0	734	2.72%	99%	96%	3.15%	
Kamuli	17	17	100%	333	323	4	4	6	3	0	0	29	0%	98%	120%	1.24%	
Kamwenge	14	15	93%	290	244	4	16	3	14	3	0	58	3.45%	89%	50%	1.64%	
Kanungu	17	17	100%	162	153	3	8	3	8	2	3	23	8.7%	99%	100%	1.96%	
Kasese	39	40	98%	582	532	2	8	2	7	3	0	45	6.67%	93%	67%	0.38%	
Katakwi	10	12	83%	107	104	4	3	3	3	0	0			100%	100%	3.85%	
Kayunga	2	11	18%	66	66	1	0	1	0	0	0	26	0%	100%	100%	1.52%	
Kibaale	6	6	100%	153	148	3	3	3	3	0	0	59	5.08%	99%	100%	2.03%	
Kiboga	8	8	100%	162	150	6	11	6	11	0	0	21	4.76%	99%	100%	4%	
Kibuku	11	11	100%	206	204	2	1	1	0	0	1	3	0%	100%	33%	0.98%	
Kiruhura	18	21	86%	183	167	7	10	7	10	1	0	51	3.92%	97%	100%	4.19%	
Kiryandongo	11	11	100%	284	254	3	8	3	6	0	0	24	4.17%	92%	100%	1.18%	
Kisoro	19	20	95%	216	213	4	2	4	2	2	0	26	0%	100%	100%	1.88%	
Kitgum	7	12	58%	100	91	6	2	5	2	1	0	59	0%	93%	83%	6.59%	
Koboko	8	8	100%	84	80	3	3	3	2	1	0	13	0%	99%	100%	3.75%	
Kole	4	5	80%	63	63	0	1	0	5	0	0	13	0%	102%	0%	0%	
Kotido	6	16	38%	136	136	0	0	0	0	0	0	4	0%	100%	0%	0%	
Kumi	6	9	67%	98	96	1	1	1	1	0	0	19	5.26%	99%	100%	1.04%	
Kyankwanzi	9	12	75%	202	184	5	5	4	5	0	0	16	0%	93%	75%	2.72%	
Kyegegwa	9	9	100%	261	195	6	13	5	13	4	0	41	4.88%	79%	83%	3.08%	
Kyenjojo	16	18	89%	339	301	7	22	7	22	1	0	95	6.32%	95%	100%	2.33%	
Lamwo	7	9	78%	105	100	2	5	2	5	0	0	25	8%	100%	100%	2%	
Lira	9	19	47%	204	223	1	20	1	23	0	0	96	5.21%	121%	-20%	0.45%	

Ministry of Health Option B+ Weekly Report (3.2)

Week ending 2018-06-17 (2018W24)

District and weekly rate				For Week ending 2018-06-17 (2018W24)									EID November 2015		Analysis		
Level	No of facilities reporting	No of registered facilities	Proportion of facilities reporting (reporting rate)	a. Total ANC1 visits	b. Total No of mothers tested at 1st ANC visit	c. Total No HIV Tested Positive at 1st ANC visit	d. Total No with known HIV+ status by ANC1	e. Total initiating Option B+ at 1st ANC visit	f. Total no on ART treatment by ANC1	h. Has Test Kits stockout	i. Has ARVs stockout	A. Number of EID tests carried out	B. Proportion of EID tests testing positive for HIV	1. Proportion of ANC1 with unknown status tested	2. Proportion of HIV+ women not yet on ART initiated	3. Proportion of women tested positive out of those tested	
Luuka	6	7	86%	127	122	3	3	3	3	0	0	4	0%	98%	100%	2.46%	
Luweero	28	57	49%	366	351	12	17	12	16	2	2	99	2.02%	101%	91%	3.42%	
Lwengo	9	13	69%	142	136	6	4	6	4	0	0	48	6.25%	99%	100%	4.41%	
Lyantonde	1	2	50%	5	4	0	1	0	1	0	0	38	7.89%	100%	0%	0%	
Manafwa	5	12	42%	119	119	1	0	1	0	0	0	8	0%	100%	100%	0.84%	
Maracha	10	10	100%	120	101	0	0	0	0	0	0			84%	0%	0%	
Masaka	16	21	76%	103	83	5	12	3	13	2	2	97	3.09%	91%	75%	6.02%	
Masindi	13	14	93%	231	228	10	6	10	6	0	0			101%	100%	4.39%	
Mayuge	8	14	57%	226	204	4	4	4	6	1	0	33	6.06%	92%	200%	1.96%	
Mbale	23	33	70%	255	256	4	7	4	7	1	0	59	1.69%	103%	100%	1.56%	
Mbarara	21	45	47%	330	289	6	34	5	31	0	0	162	4.94%	98%	50%	2.08%	
Mitooma	8	9	89%	60	56	0	4	10	4	0	0	10	0%	100%	0%	0%	
Mityana	22	26	85%	258	246	14	9	14	9	3	3	78	6.41%	99%	100%	5.69%	
Moroto	4	12	33%	44	44	0	1	0	1	0	0	5	0%	102%	0%	0%	
Moyo	14	14	100%	85	84	0	2	0	2	0	0	6	0%	101%	0%	0%	
Mpigi	1	2	50%	20	20	0	0	0	0	0	0	67	2.99%	100%	0%	0%	
Mubende	17	23	74%	518	377	8	29	7	26	4	1	138	0%	77%	67%	2.12%	
Mukono	6	22	27%	155	150	8	5	3	3	0	0			100%	30%	5.33%	
Nakapiripirit	8	14	57%	63	63	0	0	0	0	0	0	4	0%	100%	0%	0%	
Nakaseke	10	15	67%	165	155	6	8	5	8	0	0	33	3.03%	99%	83%	3.87%	
Nakasongola	10	24	42%	108	107	3	2	3	2	1	2	22	4.55%	101%	100%	2.8%	
Namayingo	7	20	35%	112	73	1	1	1	2	1	0	26	3.85%	66%	100%	1.37%	
Namisindwa	8	18	44%	124	123	0	1	0	2	0	0			100%	0%	0%	
Namutumba	6	7	86%	137	136	0	0	0	1	0	0			99%	0%	0%	
Napak	6	8	75%	88	74	0	0	0	0	0	0	6	0%	84%	0%	0%	
Nebbi	11	12	92%	293	290	5	3	5	3	0	0	40	2.5%	100%	100%	1.72%	
Ngora	7	8	88%	95	95	0	0	0	0	0	0	12	0%	100%	0%	0%	
Ntoroko	3	4	75%	29	29	1	0	1	0	0	0	5	0%	100%	100%	3.45%	
Ntungamo	14	17	82%	307	294	3	12	2	13	2	0	39	2.56%	100%	100%	1.02%	
Nwoya	4	7	57%	33	31	3	2	3	2	1	0	25	0%	100%	100%	9.68%	
Omoro	0	6	0%											null%	null%		
Otuke	7	7	100%	104	103	0	1	0	1	0	0	10	0%	100%	0%	0%	

Ministry of Health Option B+ Weekly Report (3.2)

Week ending 2018-06-17 (2018W24)

District and weekly rate				For Week ending 2018-06-17 (2018W24)									EID November 2015		Analysis		
Level	No of facilities reporting	No of registered facilities	Proportion of facilities reporting (reporting rate)	a. Total ANC1 visits	b. Total No of mothers tested at 1st ANC visit	c. Total No HIV Tested Positive at 1st ANC visit	d. Total No with known HIV+ status by ANC1	e. Total initiating Option B+ at 1st ANC visit	f. Total no on ART treatment by ANC1	h. Has Test Kits stockout	i. Has ARVs stockout	A. Number of EID tests carried out	B. Proportion of EID tests testing positive for HIV	1. Proportion of ANC1 with unknown status tested	2. Proportion of HIV+ women not yet on ART initiated	3. Proportion of women tested positive out of those tested	
Oyam	7	7	100%	215	202	1	13	1	13	0	0	40	0%	100%	100%	0.5%	
Pader	5	11	45%	45	43	0	4	0	2	1	0	50	4%	105%	0%	0%	
Pakwach	9	9	100%	130	126	1	2	0	4	0	0			98%	0%	0.79%	
Pallisa	15	19	79%	240	220	1	4	0	2	1	0	12	0%	93%	0%	0.45%	
Rakai	18	35	51%	181	160	4	12	4	12	1	0	155	3.23%	95%	100%	2.5%	
Rubirizi	6	8	75%	60	44	1	2	1	1	1	0	16	0%	76%	50%	2.27%	
Rukungiri	19	20	95%	182	161	5	17	5	14	3	0	61	1.64%	98%	71%	3.11%	
Serere	11	14	79%	176	192	0	2	0	2	0	0	38	7.89%	110%	0%	0%	
Sheema	9	9	100%	119	112	4	7	2	7	0	0	51	1.96%	100%	33%	3.57%	
Sironko	15	16	94%	188	184	2	5	3	3	1	0	10	0%	101%	75%	1.09%	
Soroti	12	21	57%	196	186	3	6	3	6	0	0	42	4.76%	98%	100%	1.61%	
Tororo	18	49	37%	334	368	6	7	6	8	1	0	59	1.69%	113%	125%	1.63%	
Wakiso	55	81	68%	996	946	27	45	25	46	1	0	252	4.37%	99%	97%	2.85%	
Yumbe	13	13	100%	147	146	1	1	1	1	0	0	13	7.69%	100%	100%	0.68%	
Zombo	10	11	91%	214	203	1	4	1	3	0	0	23	4.35%	97%	0%	0.49%	

EID data provided by CPHL up to 2015-12-10 cumulative for the entire month of November 2015

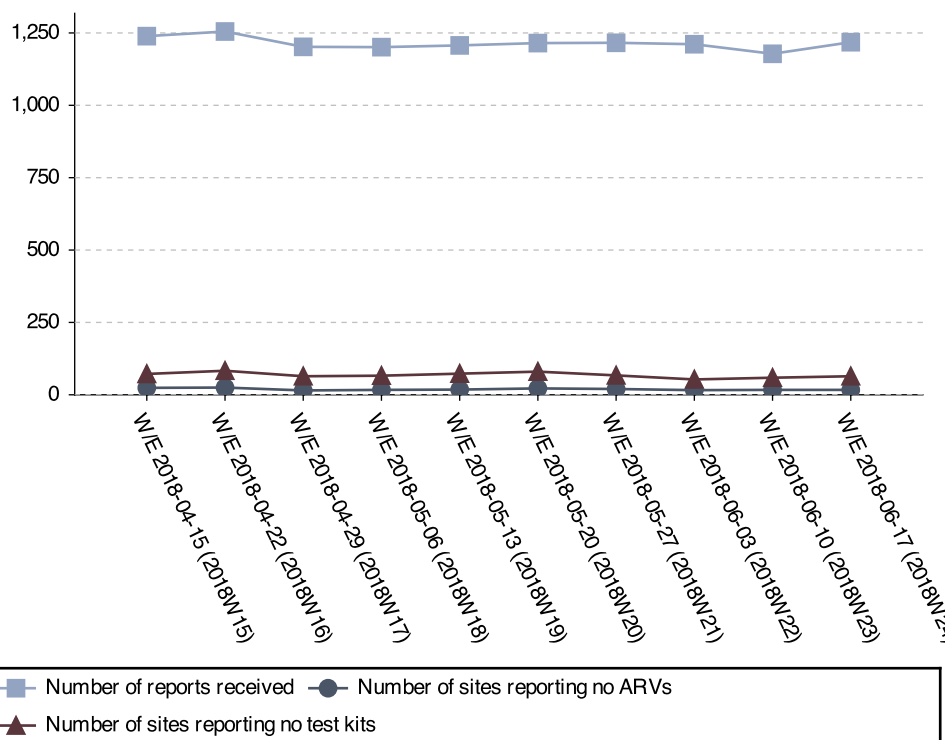
Ministry of Health Option B+ Weekly Report (3.2)

Week ending 2018-06-17 (2018W24)

Stock-outs for the last 6 weeks per facility level

	2018W24		2018W23		2018W22		2018W21		2018W20		2018W19	
	ARVs	HIV Test kits	ARVs	HIV Test kits	ARVs	HIV Test kits	ARVs	HIV Test kits	ARVs	HIV Test kits	ARVs	HIV Test kits
Clinic	0	0	0	0	0	0	0	0	0	0	0	0
General Hospital	1	2	1	2	0	1	0	1	0	4	0	3
HC II	1	18	2	19	4	19	1	18	1	20	2	20
HC III	14	43	12	38	11	31	18	43	20	56	16	53
HC IV	1	4	2	2	1	2	1	8	1	6	0	2
NR Hospital	0	0	0	0	0	0	0	0	0	0	0	0
Other/unknown	0	0	0	0	0	1	0	1	0	1	0	1
RR Hospital	0	1	0	0	0	0	0	0	0	0	0	0
Total	17	68	17	61	16	54	20	71	22	87	18	79

Stock-out trends for the last 10 weeks



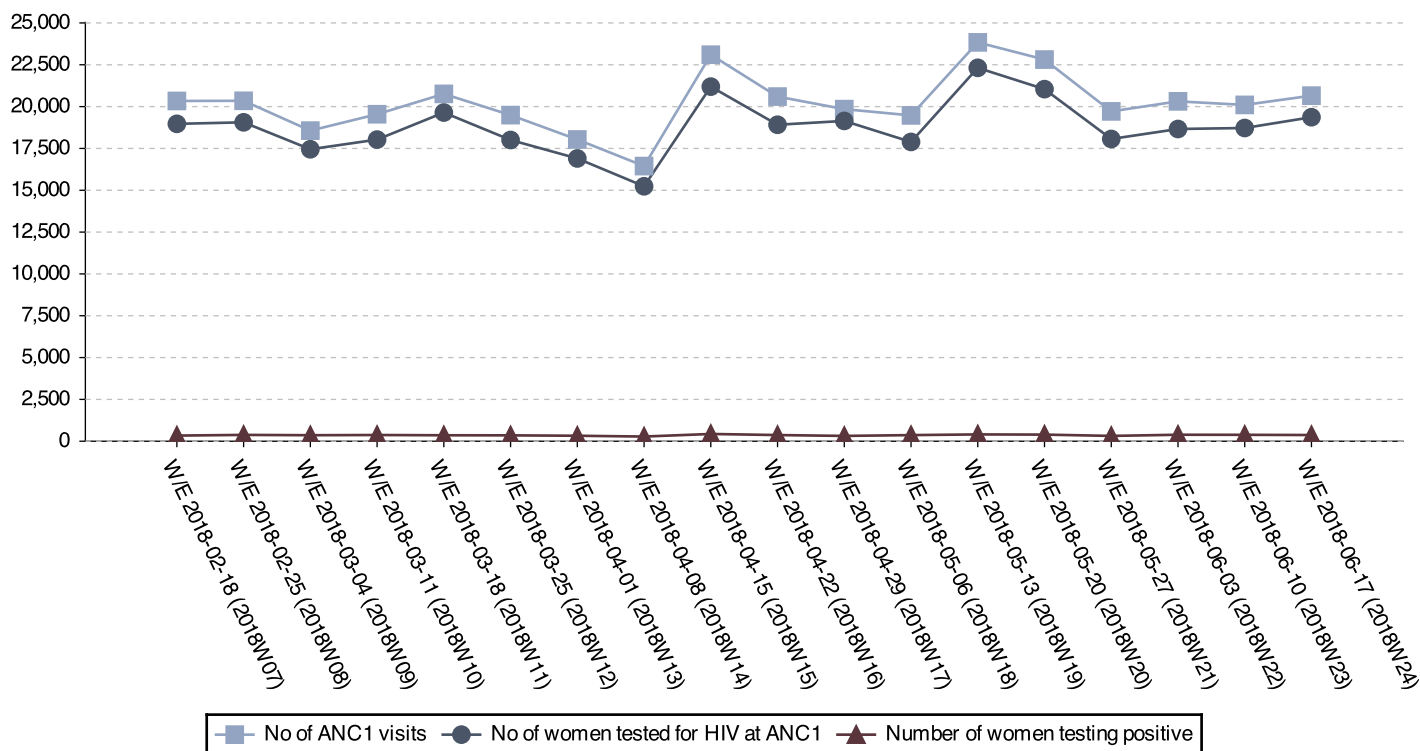
Current stock-outs per IP

IP	Test kit stockout	ARV stockout
RHITES-SW	15	3
Baylor	12	1
Mildmay	11	8
RHITES-E	6	2
IDI	6	1
PREFA	6	6
RHITES-EC	4	0
USAID ASSIST	3	0
USAID PHS	1	0
RHSP	1	0
RTI	1	0
SUSTAIN	1	0
TASO	1	0
Total	68	21

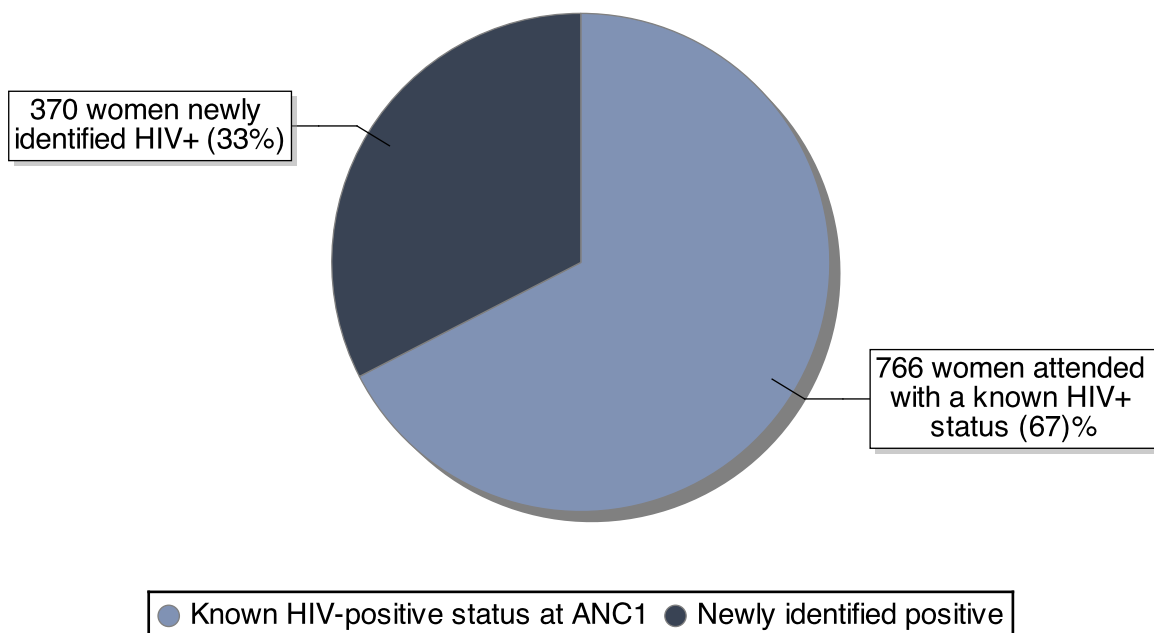
Ministry of Health Option B+ Weekly Report (3.2)

Week ending 2018-06-17 (2018W24)

ANC trends for the last 18 weeks



Break down of existing vs. newly identified infections



Ratio newly identified / already known status: 0.48

Ministry of Health Option B+ Weekly Report (3.2)

Week ending 2018-06-17 (2018W24)

District Service Delivery Focus

High HIV+ EID Testing

This section shows 20 districts with high proportions of HIV+ 1st PCR EID tests. Please consider both the actual number and the proportion.

District	# EID Tests	# Positive	% Positive
Amudat	3	1	33.33
Bududa	5	1	20.00
Buvuma	13	2	15.38
Abim	7	1	14.29
Amolatar	18	2	11.11
Kaberaido	19	2	10.53
Agago	33	3	9.09
Butaleja	11	1	9.09
Adjumani	11	1	9.09
Kanungu	23	2	8.70
Alebtong	23	2	8.70
Lamwo	25	2	8.00
Lyantonde	38	3	7.89
Serere	38	3	7.89
Yumbe	13	1	7.69
Isingiro	56	4	7.14
Kasese	45	3	6.67
Mityana	78	5	6.41
Kyenjojo	95	6	6.32
Lwengo	48	3	6.25
Mayuge	33	2	6.06
Kabale	53	3	5.66
Dokolo	18	1	5.56
Apac	36	2	5.56
Kumi	19	1	5.26

Low initiation on ART

This section shows 15 districts with low ART initiation rates. Please consider the actual ART need in addition to the proportion.

District	ART Need	# Initiated	% Initiated
Budaka	1	0	0
Kalangala	1	0	0
Pader District	2	0	0
Pallisa	3	0	0
Zombo	2	1	0
Buhweju	1	0	0
Buliisa	2	2	0
Jinja District	8	2	25
Mukono	10	3	30
Kibuku	3	1	33
Sheema	4	2	33
Amolatar	5	2	40
Busia District	5	2	40
Kamwenge	6	3	50
Buyende	2	1	50

Data Quality challenges by IP

'Overtesting'

IPs listed here have 'overtested' – which means that there are issues with data quality. Ensure that facilities have the latest version of the job aide, and that health workers understand that most indicators pertain to ANC1 visits only.

IP	# ANC1 Visits	# Tested	% Tested
Kalangala	4	12	400
TASO	870	878	105
UHMG	44	44	102
USAID	1342	1314	102
TASO Teso	992	981	101

'Overinitiating'

IPs listed here have 'overinitiated' – which means that there are issues with data quality. Ensure that facilities have the latest version of the job aide, and that health workers understand that most indicators pertain to ANC1 visits only.

IP	ART Need	# Initiated	% Initiated
USAID	17	19	136
TASO	12	14	127
IRCU	4	5	122
USAID PHS	4	6	118
RHITES-EC	22	24	104

None of the proportions mentioned above should exceed 100%, as all proportions relate to ANC1 visits only. They take both women with a known positive status and women already on ART into consideration. Please see <http://reports.dhis2sms.ug> for further details, including detailed facility data.