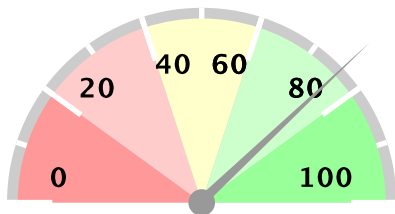


Ministry of Health Option B+ Weekly Report (3.2)

Week ending 2017-08-27 (2017W34)

Summary

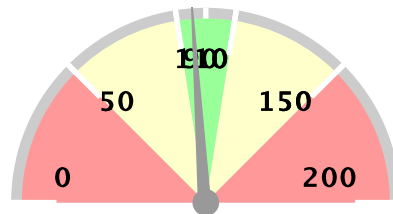
Weekly reporting rate



76%

1329 reports received out of 1746 registered facilities

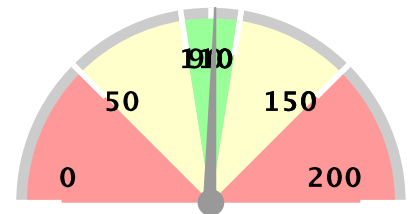
% of ANC1 attendees tested for HIV



96%

18961 ANC1 visits

% of women initiated on Option B+



102%

349 initiated on ART

Stockouts and missed appointments

Facilities without ARVs	28	2%
Facilities without test kits	88	7%
Number missed appointments	903	

1st PCR EID testing for August 2015*

Number of EID tests	4936
Number of positive EID tests	169
Proportion testing positive	3.42%

The week in numbers

Number of reports received this week 1329

Number of facilities registered for B+ 1746

Testing coverage for this week

Number of ANC 1 visits 18961

No. tested for HIV at ANC 1 92% 17409

No. HIV+ women identified at ANC 1 1132

Newly identified thru testing 31% 349

With a known status 69% 783

Proportion newly tested +ve at ANC 1 2.00%

Proportion of +ve women at ANC 1 5.97%

ART coverage for this week

Total HIV + Women at ANC 1 1132

Total already on ART 68% 774

Total to be initiated 69% 783

Total no of women initiated on ART 349

Proportion of women initiated on ART 224%

Proportion with known status already on ART 98.85%

This proportion shows how many women who have a known positive status are already on ART

The data as presented in this report using data from MoH/EOC Weekly Reporting and CPHL. PMTCT service delivery data is weekly data, EID testing data is cumulative monthly. EID number includes data up 2013-09-01. Starting from June 2014, EID data contains only 1st PCR tests.

Ministry of Health Option B+ Weekly Report (3.2)

Week ending 2017-08-27 (2017W34)

Overall performance per IP

Note: IP data does not add up to national totals due to the fact that IPs overlap in districts. EID data is aggregate for all districts in which an IP operates, and not based on individual facilities supported by an IP.

District and weekly rate				For Week ending 2017-08-27 (2017W34)									EID November 2015		Analysis		
Level	No of facilities reporting	No of registered facilities	Proportion of facilities reporting (reporting rate)	a. Total ANC1 visits	b. Total No of mothers tested at 1st ANC visit	c. Total No HIV Tested Positive at 1st ANC visit	d. Total No with known HIV+ status by ANC1	e. Total initiating Option B+ at 1st ANC visit	f. Total no on ART treatment by ANC1	h. Has Test Kits stockout	i. Has ARVs stockout	A. Number of EID tests carried out	B. Proportion of EID tests testing positive for HIV	1. Proportion of ANC1 with unknown status tested	2. Proportion of HIV+ women not yet on ART initiated	3. Proportion of women tested positive out of those tested	
Uganda	1318	1746	75%	18908	17370	345	782	348	773	87	28	4936	3.42%	96%	102%	1.99%	
Baylor	114	119	96%	1451	1336	25	60	28	59	6	2	402	4.48%	96%	108%	1.87%	
CAF	5	6	83%	15	9	0	6	0	6	0	0	1133	3.09%	100%	0%	0%	
CUAMM	55	63	87%	554	515	1	1	0	1	4	2	29	6.9%	93%	0%	0.19%	
HIWA	6	7	86%	44	42	0	1	0	1	0	0	1142	2.63%	98%	0%	0%	
IDI-KCC	7	7	100%	909	847	23	62	22	61	0	0	734	2.72%	100%	92%	2.72%	
IDI	195	197	99%	2941	2832	35	74	55	78	3	0	330	3.64%	99%	210%	1.24%	
IRCU	14	15	93%	348	345	4	8	5	11	0	0	1457	3.09%	101%	500%	1.16%	
Kalangala	11	15	73%	20	16	0	5	0	5	0	1	32	0%	107%	0%	0%	
Mildmay	133	154	86%	2036	1802	67	106	64	109	11	2	775	3.1%	93%	105%	3.72%	
MJAP	19	22	86%	520	418	9	43	9	44	4	2	896	3.12%	88%	115%	2.15%	
MRC-UVRI	1	1	100%	1	1	1	0	1	0	0	0	734	2.72%	100%	0%	100%	
PREFA	116	128	91%	1547	1400	57	92	52	97	11	2	567	3.53%	96%	108%	4.07%	
Reach Out	7	7	100%	39	30	2	9	2	9	0	0	1085	3.04%	100%	100%	6.67%	
RHITES-EC	83	121	69%	1461	1416	23	26	25	26	9	3	279	2.15%	99%	109%	1.62%	
RHITES-SW	199	215	93%	2056	1817	48	96	44	95	19	4	648	3.55%	93%	92%	2.64%	
RHSP	27	35	77%	230	180	9	37	6	31	1	0	155	3.23%	93%	40%	5%	
RHU	1	1	100%	10	9	0	0	0	0	0	0	64	1.56%	90%	0%	0%	
RTI	9	19	47%	61	76	3	6	4	5	3	0	2002	3.05%	138%	100%	3.95%	
STAR-E	123	165	75%	1634	1584	14	24	10	24	7	0	150	2.67%	98%	85%	0.88%	
SUSTAIN	13	13	100%	678	553	15	48	14	47	0	0	877	2.85%	88%	88%	2.71%	
TASO	51	65	78%	594	546	8	29	6	31	0	2	1672	3.11%	97%	100%	1.47%	
TASO Teso	55	93	59%	734	660	3	12	2	13	8	3	170	4.71%	91%	100%	0.45%	
UCMB	17	18	94%	510	466	6	30	7	26	0	0	1907	2.83%	97%	73%	1.29%	
UHMG	5	18	28%	40	40	1	1	1	1	0	0	1232	3.17%	103%	100%	2.5%	
UPMB	10	13	77%	91	85	4	6	4	7	1	0	1399	3.5%	100%	133%	4.71%	
USAID ASSIST	91	126	72%	1133	976	19	56	17	50	7	5	569	3.69%	91%	68%	1.95%	
USAID PHS	38	39	97%	488	476	6	12	7	14	1	1	2064	3.29%	100%	367%	1.26%	

Ministry of Health Option B+ Weekly Report (3.2)

Week ending 2017-08-27 (2017W34)

District and weekly rate			For Week ending 2017-08-27 (2017W34)									EID November 2015		Analysis		
Level	No of facilities reporting	No of registered facilities	Proportion of facilities reporting (reporting rate)	a. Total ANC1 visits	b. Total No of mothers tested at 1st ANC visit	c. Total No HIV Tested Positive at 1st ANC visit	d. Total No with known HIV+ status by ANC1	e. Total initiating Option B+ at 1st ANC visit	f. Total no on ART treatment by ANC1	h. Has Test Kits stockout	i. Has ARVs stockout	A. Number of EID tests carried out	B. Proportion of EID tests testing positive for HIV	1. Proportion of ANC1 with unknown status tested	2. Proportion of HIV+ women not yet on ART initiated	3. Proportion of women tested positive out of those tested
Walter Reed	27	64	42%	572	554	16	14	16	14	1	1	39	5.13%	99%	100%	2.89%

EID data provided by CPHL up to 2015-12-10 cumulative for the entire month of November 2015

Overall performance per district

Note:

Ministry of Health Option B+ Weekly Report (3.2)

Week ending 2017-08-27 (2017W34)

District and weekly rate				For Week ending 2017-08-27 (2017W34)									EID November 2015		Analysis		
Level	No of facilities reporting	No of registered facilities	Proportion of facilities reporting (reporting rate)	a. Total ANC1 visits	b. Total No of mothers tested at 1st ANC visit	c. Total No HIV Tested Positive at 1st ANC visit	d. Total No with known HIV+ status by ANC1	e. Total initiating Option B+ at 1st ANC visit	f. Total no on ART treatment by ANC1	g. Has Test Kits stockout	h. Has ARVs stockout	A. Number of EID tests carried out	B. Proportion of EID tests testing positive for HIV	1. Proportion of ANC1 with unknown status tested	2. Proportion of HIV+ women not yet on ART initiated	3. Proportion of women tested positive out of those tested	
Uganda	1318	1746	75%	18908	17370	345	782	348	773	87	28	4936	3.42%	96%	102%	1.99%	
Abim	7	8	88%	74	62	0	1	0	1	1	1	7	14.29%	85%	0%	0%	
Adjumani	11	12	92%	121	111	1	0	1	0	0	0	11	9.09%	92%	100%	0.9%	
Agago	5	9	56%	85	82	0	5	0	5	1	1	33	9.09%	102%	0%	0%	
Alebong	7	7	100%	102	83	3	4	3	4	1	2	23	8.7%	85%	100%	3.61%	
Amolatar	4	5	80%	50	36	1	5	1	5	2	1	18	11.11%	80%	100%	2.78%	
Amudat	3	4	75%	40	40	0	0	0	0	0	0	3	33.33%	100%	0%	0%	
Amuria	13	14	93%	203	148	2	3	2	4	5	1	26	0%	74%	200%	1.35%	
Amuru	3	8	38%	23	20	0	0	0	0	1	0	8	0%	87%	0%	0%	
Apac	10	12	83%	209	172	2	3	1	2	0	0	36	5.56%	83%	33%	1.16%	
Arua	40	43	93%	432	416	2	6	2	8	0	0	54	1.85%	98%	-200%	0.48%	
Budaka	10	14	71%	143	139	0	3	0	3	0	0	7	0%	99%	0%	0%	
Bududa	9	9	100%	106	80	0	1	0	1	2	0	5	20%	76%	0%	0%	
Bugiri	14	15	93%	248	243	7	4	7	5	1	1	38	2.63%	100%	117%	2.88%	
Buhweju	6	6	100%	27	25	0	2	0	2	0	0	5	0%	100%	0%	0%	
Buikwe	16	32	50%	167	166	8	5	7	5	0	0			102%	88%	4.82%	
Bukedea	4	8	50%	70	87	1	1	0	1	0	1	14	0%	126%	0%	1.15%	
Bukwo	5	5	100%	46	47	0	0	0	0	0	0			102%	0%	0%	
Bulambuli	9	11	82%	89	85	0	5	1	5	1	0	9	11.11%	101%	0%	0%	
Buliisa	8	8	100%	111	106	0	6	0	6	0	0	9	0%	101%	0%	0%	
Bundibugyo	9	11	82%	107	107	0	0	0	0	1	1	4	0%	100%	0%	0%	
Bushenyi	14	18	78%	124	118	3	9	3	9	1	0	64	1.56%	103%	100%	2.54%	
Busia	11	24	46%	178	177	2	3	2	3	1	0	29	0%	101%	100%	1.13%	
Butaleja	12	14	86%	195	185	3	0	3	0	1	0	11	9.09%	95%	100%	1.62%	
Buvuma	2	10	20%	9	8	0	0	0	0	0	0	13	15.38%	89%	0%	0%	
Buyende	4	9	44%	80	48	1	0	1	0	0	0			60%	0%	2.08%	
Dokolo	4	5	80%	42	38	1	3	1	3	0	0	18	5.56%	97%	100%	2.63%	
Gulu	11	14	79%	165	126	4	18	4	17	1	0	115	1.74%	86%	80%	3.17%	
Hoima	25	25	100%	463	434	7	21	6	23	1	0	78	3.85%	98%	100%	1.61%	
Ibanda	10	10	100%	137	129	5	8	6	7	0	0	31	0%	100%	100%	3.88%	
Iganga	13	17	76%	225	213	3	4	3	6	1	1	47	2.13%	96%	400%	1.41%	
Isingiro	21	26	81%	241	180	2	5	2	5	4	1	56	7.14%	76%	100%	1.11%	

Ministry of Health Option B+ Weekly Report (3.2)

Week ending 2017-08-27 (2017W34)

District and weekly rate				For Week ending 2017-08-27 (2017W34)									EID November 2015		Analysis		
Level	No of facilities reporting	No of registered facilities	Proportion of facilities reporting (reporting rate)	a. Total ANC1 visits	b. Total No of mothers tested at 1st ANC visit	c. Total No HIV Tested Positive at 1st ANC visit	d. Total No with known HIV+ status by ANC1	e. Total initiating Option B+ at 1st ANC visit	f. Total no on ART treatment by ANC1	h. Has Test Kits stockout	i. Has ARVs stockout	A. Number of EID tests carried out	B. Proportion of EID tests testing positive for HIV	1. Proportion of ANC1 with unknown status tested	2. Proportion of HIV+ women not yet on ART initiated	3. Proportion of women tested positive out of those tested	
Jinja	21	24	88%	352	300	7	10	7	10	1	2	83	3.61%	88%	100%	2.33%	
Kaabong	10	13	77%	89	87	0	0	0	0	0	0			98%	0%	0%	
Kabale	27	27	100%	208	198	3	8	3	6	0	0	53	5.66%	99%	60%	1.52%	
Kabarole	32	33	97%	347	308	9	26	9	27	2	1	154	3.25%	96%	112%	2.92%	
Kaberamaido	4	12	33%	47	30	0	1	0	1	2	0	19	10.53%	65%	0%	0%	
Kalangala	11	15	73%	20	16	0	5	0	5	0	1	32	0%	107%	0%	0%	
Kaliro	4	6	67%	62	62	1	1	0	1	2	1	9	0%	102%	0%	1.61%	
Kalungu	13	16	81%	97	77	3	7	4	7	3	0	49	0%	86%	133%	3.9%	
Kampala	33	40	82%	1621	1497	32	107	31	106	0	0	734	2.72%	99%	97%	2.14%	
Kamuli	9	17	53%	211	209	2	5	4	3	1	0	29	0%	101%	100%	0.96%	
Kamwenge	14	15	93%	135	124	4	5	4	5	2	0	58	3.45%	95%	100%	3.23%	
Kanungu	17	17	100%	217	195	6	12	4	12	2	0	23	8.7%	95%	60%	3.08%	
Kapchorwa	6	21	29%	70	70	0	0	0	0	0	0	5	0%	100%	0%	0%	
Kasese	37	40	92%	454	431	1	18	1	14	0	0	45	6.67%	99%	20%	0.23%	
Katakwi	3	12	25%	47	30	0	3	0	3	0	0			68%	0%	0%	
Kayunga	7	11	64%	183	176	3	6	3	6	0	0	26	0%	99%	100%	1.7%	
Kibaale	25	25	100%	771	758	15	16	16	16	0	0	59	5.08%	100%	100%	1.98%	
Kibuku	6	10	60%	95	94	0	1	0	1	1	0	3	0%	100%	0%	0%	
Kiruhura	19	21	90%	169	146	4	6	3	6	3	0	51	3.92%	90%	75%	2.74%	
Kiryandongo	10	10	100%	212	203	3	9	24	11	0	0	24	4.17%	100%	2400%	1.48%	
Kisoro	16	20	80%	165	162	1	0	1	0	1	0	26	0%	98%	100%	0.62%	
Kitgum	10	12	83%	103	103	1	8	1	8	0	0	59	0%	108%	100%	0.97%	
Koboko	8	8	100%	89	89	0	0	0	0	0	0	13	0%	100%	0%	0%	
Kole	3	5	60%	84	38	0	2	0	1	2	1	13	0%	46%	0%	0%	
Kotido	9	10	90%	169	169	0	0	0	0	1	1	4	0%	100%	0%	0%	
Kumi	7	9	78%	132	131	0	1	0	1	0	0	19	5.26%	100%	0%	0%	
Kween	4	5	80%	31	31	0	0	0	0	0	0			100%	0%	0%	
Kyankwanzi	9	12	75%	157	150	5	6	5	6	0	0	16	0%	99%	100%	3.33%	
Kyegegwa	9	9	100%	219	192	6	7	6	7	0	0	41	4.88%	91%	100%	3.12%	
Kyenjojo	18	18	100%	290	251	5	14	8	16	1	0	95	6.32%	91%	267%	1.99%	
Lamwo	5	9	56%	28	27	0	1	0	1	0	0	25	8%	100%	0%	0%	
Lira	13	19	68%	215	213	11	12	10	12	0	0	96	5.21%	105%	91%	5.16%	

Ministry of Health Option B+ Weekly Report (3.2)

Week ending 2017-08-27 (2017W34)

District and weekly rate				For Week ending 2017-08-27 (2017W34)									EID November 2015		Analysis		
Level	No of facilities reporting	No of registered facilities	Proportion of facilities reporting (reporting rate)	a. Total ANC1 visits	b. Total No of mothers tested at 1st ANC visit	c. Total No HIV Tested Positive at 1st ANC visit	d. Total No with known HIV+ status by ANC1	e. Total initiating Option B+ at 1st ANC visit	f. Total no on ART treatment by ANC1	h. Has Test Kits stockout	i. Has ARVs stockout	A. Number of EID tests carried out	B. Proportion of EID tests testing positive for HIV	1. Proportion of ANC1 with unknown status tested	2. Proportion of HIV+ women not yet on ART initiated	3. Proportion of women tested positive out of those tested	
Luuka	5	7	71%	59	58	1	2	1	1	0	0	4	0%	102%	50%	1.72%	
Luweero	30	62	48%	327	331	13	18	11	23	2	0	99	2.02%	107%	170%	3.93%	
Lwengo	12	13	92%	150	138	4	7	5	7	1	1	48	6.25%	97%	125%	2.9%	
Lyantonde	1	2	50%	2	1	0	1	0	1	0	0	38	7.89%	100%	0%	0%	
Manafwa	11	15	73%	109	114	1	2	1	2	0	0	8	0%	107%	100%	0.88%	
Maracha	9	10	90%	93	92	0	0	0	0	0	0			99%	0%	0%	
Masaka	18	21	86%	183	151	7	25	4	23	3	1	97	3.09%	96%	50%	4.64%	
Masindi	12	13	92%	194	187	3	6	3	6	0	0			99%	100%	1.6%	
Mayuge	11	14	79%	207	205	6	4	7	4	2	0	33	6.06%	101%	150%	2.93%	
Mbale	28	30	93%	404	394	7	13	5	16	1	0	59	1.69%	101%	400%	1.78%	
Mbarara	20	45	44%	233	172	8	19	8	20	4	2	162	4.94%	80%	117%	4.65%	
Mitooma	9	9	100%	96	93	2	3	2	3	0	0	10	0%	100%	100%	2.15%	
Mityana	26	26	100%	233	207	8	15	7	14	4	2	78	6.41%	95%	78%	3.86%	
Moroto	7	9	78%	62	39	0	0	0	0	1	0	5	0%	63%	0%	0%	
Moyo	14	14	100%	82	79	2	2	3	2	1	0	6	0%	99%	150%	2.53%	
Mpigi	2	2	100%	20	1	0		0	0	0	0	67	2.99%	null%	0%	0%	
Mubende	19	23	83%	391	271	9	16	9	15	2	0	138	0%	72%	100%	3.32%	
Mukono	9	22	41%	310	299	10	9	10	7	1	1			99%	83%	3.34%	
Nakapiripirit	14	14	100%	76	74	0	0	0	0	1	0	4	0%	97%	0%	0%	
Nakaseke	11	15	73%	158	140	3	9	2	9	2	0	33	3.03%	94%	50%	2.14%	
Nakasongola	13	24	54%	116	114	2	3	2	3	1	0	22	4.55%	101%	100%	1.75%	
Namayingo	7	20	35%	71	65	1	1	1	2	1	0	26	3.85%	93%	100%	1.54%	
Namutumba	6	7	86%	144	160	0	1	0	1	0	0			112%	0%	0%	
Napak	7	8	88%	70	70	1	0	0	0	0	0	6	0%	100%	0%	1.43%	
Nebbi	21	21	100%	283	269	1	15	1	15	1	0	40	2.5%	100%	100%	0.37%	
Ngora	6	8	75%	44	44	0	1	0	1	0	0	12	0%	102%	0%	0%	
Ntoroko	3	4	75%	24	23	0	1	0	1	0	0	5	0%	100%	0%	0%	
Ntungamo	17	17	100%	249	234	8	10	7	10	2	0	39	2.56%	98%	86%	3.42%	
Nwoya	5	7	71%	79	73	2	6	2	2	0	0	25	0%	100%	40%	2.74%	
Omoro	4	7	57%	26	24	1	2	1	2	0	0			100%	100%	4.17%	
Otuke	7	7	100%	64	59	0	4	0	4	0	0	10	0%	98%	0%	0%	
Oyam	4	7	57%	115	110	4	5	4	5	0	0	40	0%	100%	100%	3.64%	

Ministry of Health Option B+ Weekly Report (3.2)

Week ending 2017-08-27 (2017W34)

District and weekly rate				For Week ending 2017-08-27 (2017W34)									EID November 2015		Analysis		
Level	No of facilities reporting	No of registered facilities	Proportion of facilities reporting (reporting rate)	a. Total ANC1 visits	b. Total No of mothers tested at 1st ANC visit	c. Total No HIV Tested Positive at 1st ANC visit	d. Total No with known HIV+ status by ANC1	e. Total initiating Option B+ at 1st ANC visit	f. Total no on ART treatment by ANC1	h. Has Test Kits stockout	i. Has ARVs stockout	A. Number of EID tests carried out	B. Proportion of EID tests testing positive for HIV	1. Proportion of ANC1 with unknown status tested	2. Proportion of HIV+ women not yet on ART initiated	3. Proportion of women tested positive out of those tested	
Pader	9	11	82%	83	74	1	10	1	10	0	0	50	4%	101%	100%	1.35%	
Pallisa	15	21	71%	196	194	1	1	1	1	0	0	12	0%	99%	100%	0.52%	
Rakai	27	35	77%	230	180	9	37	6	31	1	0	155	3.23%	93%	40%	5%	
Rubirizi	8	8	100%	61	42	0	5	0	5	2	0	16	0%	75%	0%	0%	
Rukungiri	18	19	95%	153	142	5	6	4	6	0	1	61	1.64%	97%	80%	3.52%	
Serere	10	14	71%	122	122	0	1	0	1	1	1	38	7.89%	101%	0%	0%	
Sheema	8	9	89%	96	87	2	12	2	13	0	0	51	1.96%	104%	200%	2.3%	
Sironko	14	19	74%	162	160	3	0	0	0	0	0	10	0%	99%	0%	1.88%	
Soroti	11	21	52%	133	128	0	5	0	5	0	0	42	4.76%	100%	0%	0%	
Tororo	17	25	68%	228	213	2	15	0	14	0	0	59	1.69%	100%	0%	0.94%	
Wakiso	52	103	50%	1024	923	36	63	36	61	3	1	252	4.37%	96%	98%	3.9%	
Yumbe	13	13	100%	207	207	0	0	0	0	0	0	13	7.69%	100%	0%	0%	
Zombo	9	11	82%	138	129	2	5	2	5	0	0	23	4.35%	97%	100%	1.55%	

EID data provided by CPHL up to 2015-12-10 cumulative for the entire month of November 2015

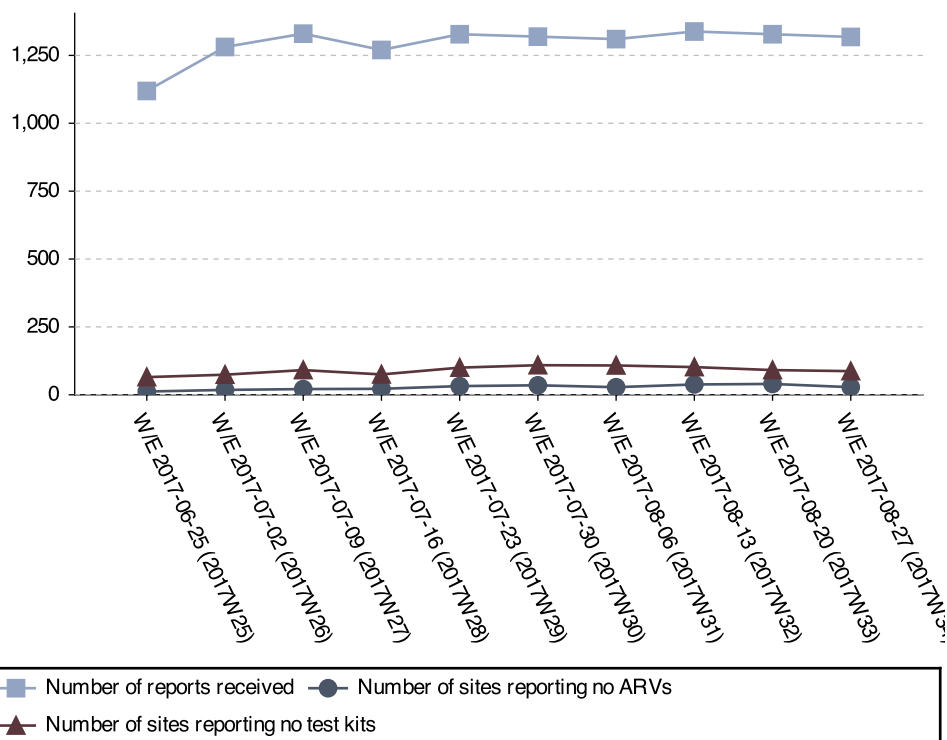
Ministry of Health Option B+ Weekly Report (3.2)

Week ending 2017-08-27 (2017W34)

Stock-outs for the last 6 weeks per facility level

	2017W34		2017W33		2017W32		2017W31		2017W30		2017W29	
	ARVs	HIV Test kits	ARVs	HIV Test kits	ARVs	HIV Test kits	ARVs	HIV Test kits	ARVs	HIV Test kits	ARVs	HIV Test kits
Clinic	0	0	2	0	2	1	2	0	0	0	0	1
General Hospital	0	2	0	0	1	1	1	2	1	5	1	2
HC II	2	28	4	24	2	29	3	27	4	30	5	24
HC III	21	61	29	72	27	75	21	79	27	75	23	68
HC IV	5	6	5	7	5	10	3	12	4	6	4	11
NR Hospital	0	0	0	0	0	0	0	0	0	0	0	0
Other/unknown	0	0	0	1	1	0	0	0	0	2	0	1
RR Hospital	0	0	0	0	0	0	0	0	0	1	0	0
Total	28	97	40	104	38	116	30	120	36	119	33	107

Stock-out trends for the last 10 weeks



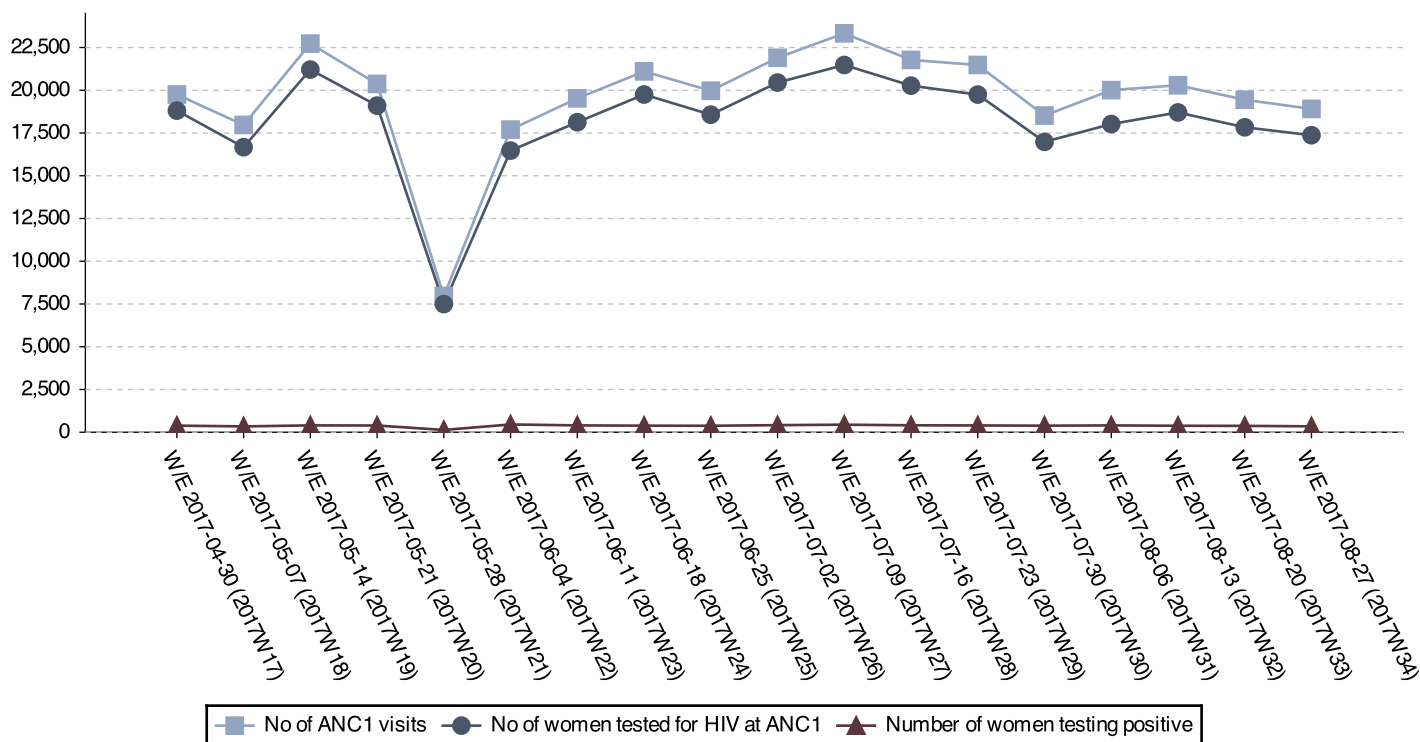
Current stock-outs per IP

IP	Test kit stockout	ARV stockout
RHITES-SW	19	4
PREFA	11	2
Mildmay	11	2
RHITES-EC	9	3
TASO Teso	8	3
STAR-E	7	0
USAID ASSIST	7	5
Baylor	6	2
CUAMM	4	2
MJAP	4	2
IDI	3	0
RTI	3	0
Walter Reed	1	1
RHSP	1	0
UPMB	1	0
USAID PHS	1	1
Kalangala	0	1
TASO	0	2
Total	96	30

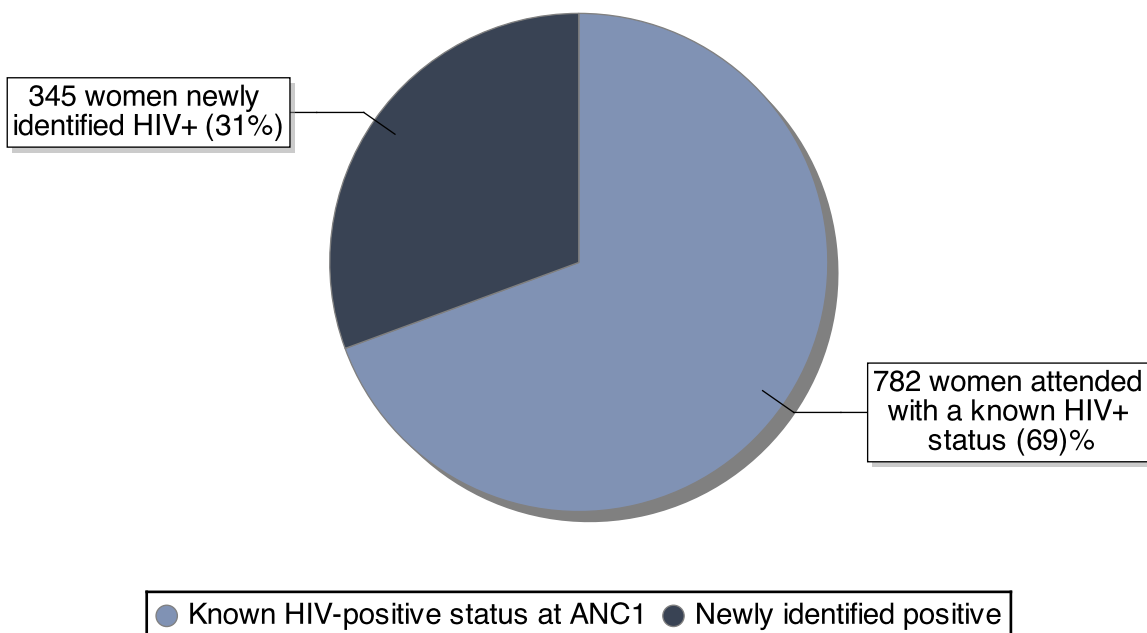
Ministry of Health Option B+ Weekly Report (3.2)

Week ending 2017-08-27 (2017W34)

ANC trends for the last 18 weeks



Break down of existing vs. newly identified infections



Ratio newly identified / already known status: 0.44

Ministry of Health Option B+ Weekly Report (3.2)

Week ending 2017-08-27 (2017W34)

District Service Delivery Focus

High HIV+ EID Testing

This section shows 20 districts with high proportions of HIV+ 1st PCR EID tests. Please consider both the actual number and the proportion.

District	# EID Tests	# Positive	% Positive
Amudat	3	1	33.33
Bududa	5	1	20.00
Buvuma	13	2	15.38
Abim	7	1	14.29
Amolatar	18	2	11.11
Bulambuli	9	1	11.11
Kaberamaido	19	2	10.53
Agago	33	3	9.09
Butaleja	11	1	9.09
Adjumani	11	1	9.09
Alebtong	23	2	8.70
Kanungu	23	2	8.70
Lamwo	25	2	8.00
Serere	38	3	7.89
Lyantonde	38	3	7.89
Yumbe	13	1	7.69
Isingiro	56	4	7.14
Kasese	45	3	6.67
Mityana	78	5	6.41
Kyenjojo	95	6	6.32
Lwengo	48	3	6.25
Mayuge	33	2	6.06
Kabale	53	3	5.66
Dokolo	18	1	5.56
Apac	36	2	5.56

Low initiation on ART

This section shows 15 districts with low ART initiation rates. Please consider the actual ART need in addition to the proportion.

District	ART Need	# Initiated	% Initiated
Kole District	1	0	0
Bukedea	1	0	0
Buyende	1	1	0
Tororo	3	0	0
Kaliro District	1	0	0
Sironko	3	0	0
Napak	1	0	0
Kasese	5	1	20
Apac District	3	1	33
Nwoya	6	2	40
Rakai District	15	6	40
Luuka District	2	1	50
Masaka	9	4	50
Nakaseke	3	2	50
Kabale	5	3	60

Data Quality challenges by IP

'Overtesting'

IPs listed here have 'overtested' – which means that there are issues with data quality. Ensure that facilities have the latest version of the job aide, and that health workers understand that most indicators pertain to ANC1 visits only.

IP	# ANC1 Visits	# Tested	% Tested
RTI	61	76	138
Kalangala	20	16	107
UHMG	40	40	103
IRCU	348	345	101

'Overinitiating'

IPs listed here have 'overinitiated' – which means that there are issues with data quality. Ensure that facilities have the latest version of the job aide, and that health workers understand that most indicators pertain to ANC1 visits only.

IP	ART Need	# Initiated	% Initiated
IRCU	1	5	500
USAID PHS	4	7	367
IDI	31	55	210
UPMB	3	4	133
MJAP	8	9	115
RHITES-EC	23	25	109
PREFA	52	52	108
Baylor	26	28	108
Mildmay	64	64	105

None of the proportions mentioned above should exceed 100%, as all proportions relate to ANC1 visits only. They take both women with a known positive status and women already on ART into consideration. Please see <http://reports.dhis2sms.ug> for further details, including detailed facility data.