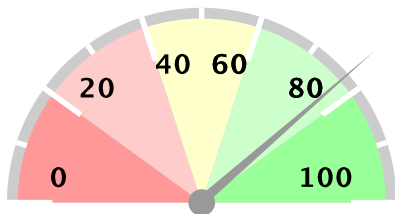


# Ministry of Health Option B+ Weekly Report (3.2)

Week ending 2017-08-20 (2017W33)

## Summary

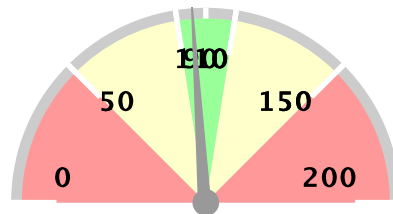
Weekly reporting rate



**77%**

1350 reports received out of 1746 registered facilities

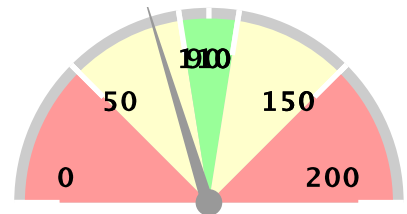
% of ANC1 attendees tested for HIV



**96%**

19954 ANC1 visits

% of women initiated on Option B+



**81%**

332 initiated on ART

### Stockouts and missed appointments

Facilities without ARVs	40	3%
Facilities without test kits	91	7%
Number missed appointments	1015	

### 1st PCR EID testing for August 2015\*

Number of EID tests	4936
Number of positive EID tests	169
Proportion testing positive	3.42%

### The week in numbers

Number of reports received this week 1350

Number of facilities registered for B+ 1746

### Testing coverage for this week

Number of ANC 1 visits	19954
No. tested for HIV at ANC 1	92% 18307
No. HIV+ women identified at ANC 1	1236
Newly identified thru testing	31% 385
With a known status	69% 851
Proportion newly tested +ve at ANC 1	2.10%
Proportion of +ve women at ANC 1	6.19%

### ART coverage for this week

Total HIV + Women at ANC 1	1236
Total already on ART	65% 798
Total to be initiated	73% 904
Total no of women initiated on ART	332
Proportion of women initiated on ART	272%
Proportion with known status already on ART	93.77%

This proportion shows how many women who have a known positive status are already on ART

The data as presented in this report using data from MoH/EOC Weekly Reporting and CPHL. PMTCT service delivery data is weekly data, EID testing data is cumulative monthly. EID number includes data up 2013-09-01. Starting from June 2014, EID data contains only 1st PCR tests.

# Ministry of Health Option B+ Weekly Report (3.2)

Week ending 2017-08-20 (2017W33)

## Overall performance per IP

Note: IP data does not add up to national totals due to the fact that IPs overlap in districts. EID data is aggregate for all districts in which an IP operates, and not based on individual facilities supported by an IP.

District and weekly rate				For Week ending 2017-08-20 (2017W33)									EID November 2015		Analysis		
Level	No of facilities reporting	No of registered facilities	Proportion of facilities reporting (reporting rate)	a. Total ANC1 visits	b. Total No of mothers tested at 1st ANC visit	c. Total No HIV Tested Positive at 1st ANC visit	d. Total No with known HIV+ status by ANC1	e. Total initiating Option B+ at 1st ANC visit	f. Total no on ART treatment by ANC1	h. Has Test Kits stockout	i. Has ARVs stockout	A. Number of EID tests carried out	B. Proportion of EID tests testing positive for HIV	1. Proportion of ANC1 with unknown status tested	2. Proportion of HIV+ women not yet on ART initiated	3. Proportion of women tested positive out of those tested	
Uganda	1328	1746	76%	19445	17833	371	819	319	766	91	40	4936	3.42%	96%	81%	2.08%	
Baylor	117	119	98%	1594	1431	15	65	21	63	5	3	402	4.48%	94%	124%	1.05%	
CAF	4	6	67%	42	30	0	12	0	12	0	0	1133	3.09%	100%	0%	0%	
CUAMM	56	63	89%	447	429	2	8	2	6	1	2	29	6.9%	98%	60%	0.47%	
HIWA	6	7	86%	53	39	4	1	2	1	2	0	1142	2.63%	75%	0%	10.26%	
IDI-KCC	7	7	100%	790	723	26	61	21	61	0	0	734	2.72%	99%	81%	3.6%	
IDI	197	197	100%	3211	3097	45	61	36	60	2	0	330	3.64%	98%	71%	1.45%	
IRCU	15	15	100%	400	362	5	12	6	12	1	0	1457	3.09%	93%	120%	1.38%	
Kalangala	5	15	33%	25	14	0	7	1	7	0	0	32	0%	78%	0%	0%	
Mildmay	128	154	83%	2012	1779	51	97	50	83	14	4	775	3.1%	93%	80%	2.87%	
MJAP	17	22	77%	532	422	13	47	17	44	5	0	896	3.12%	87%	105%	3.08%	
MRC-UVRI	0	1	0%									734	2.72%	null%	null%		
PREFA	107	128	84%	1538	1334	42	77	40	71	13	6	567	3.53%	91%	81%	3.15%	
Reach Out	7	7	100%	34	30	2	4	1	4	0	0	1085	3.04%	100%	100%	6.67%	
RHITES-EC	84	121	69%	1711	1607	23	41	24	36	7	4	279	2.15%	96%	80%	1.43%	
RHITES-SW	185	215	86%	1834	1516	29	94	29	92	21	5	648	3.55%	87%	97%	1.91%	
RHSP	29	35	83%	186	164	7	18	6	18	3	1	155	3.23%	98%	83%	4.27%	
RHU	1	1	100%	13	10	0	1	0	1	0	0	64	1.56%	83%	0%	0%	
RTI	15	19	79%	112	108	5	13	3	10	1	1	2002	3.05%	109%	50%	4.63%	
STAR-E	125	165	76%	1695	1701	51	30	12	27	9	2	150	2.67%	102%	43%	3%	
SUSTAIN	12	13	92%	701	646	17	47	18	48	0	0	877	2.85%	99%	112%	2.63%	
TASO	54	65	83%	834	770	12	56	12	53	2	3	1672	3.11%	99%	80%	1.56%	
TASO Teso	56	93	60%	692	542	2	24	3	22	9	3	170	4.71%	81%	75%	0.37%	
UCMB	18	18	100%	518	520	15	33	15	33	0	0	1907	2.83%	107%	100%	2.88%	
UHMG	6	18	33%	62	62	1	1	1	1	0	0	1232	3.17%	102%	0%	1.61%	
UPMB	11	13	85%	98	103	2	6	2	8	0	0	1399	3.5%	112%	0%	1.94%	
USAID ASSIST	115	126	91%	1382	1315	27	62	23	54	7	7	569	3.69%	100%	65%	2.05%	
USAID PHS	39	39	100%	530	491	10	16	11	14	1	0	2064	3.29%	96%	114%	2.04%	

# Ministry of Health Option B+ Weekly Report (3.2)

Week ending 2017-08-20 (2017W33)

District and weekly rate			For Week ending 2017-08-20 (2017W33)									EID November 2015		Analysis		
Level	No of facilities reporting	No of registered facilities Proportion of facilities reporting (reporting rate)	a. Total ANC1 visits	b. Total No of mothers tested at 1st ANC visit	c. Total No HIV Tested Positive at 1st ANC visit	d. Total No with known HIV+ status by ANC1	e. Total initiating Option B+ at 1st ANC visit	f. Total no on ART treatment by ANC1	h. Has Test Kits stockout	i. Has ARVs stockout	A. Number of EID tests carried out	B. Proportion of EID tests testing positive for HIV	1. Proportion of ANC1 with unknown status tested	2. Proportion of HIV+ women not yet on ART initiated	3. Proportion of women tested positive out of those tested	
Walter Reed	22	64 34%	297	275	8	15	6	9	1	1	39	5.13%	98%	55%	2.91%	

EID data provided by CPHL up to 2015-12-10 cumulative for the entire month of November 2015

## Overall performance per district

Note:

# Ministry of Health Option B+ Weekly Report (3.2)

Week ending 2017-08-20 (2017W33)

District and weekly rate				For Week ending 2017-08-20 (2017W33)									EID November 2015		Analysis		
Level	No of facilities reporting	No of registered facilities	Proportion of facilities reporting (reporting rate)	a. Total ANC1 visits	b. Total No of mothers tested at 1st ANC visit	c. Total No HIV Tested Positive at 1st ANC visit	d. Total No with known HIV+ status by ANC1	e. Total initiating Option B+ at 1st ANC visit	f. Total no on ART treatment by ANC1	h. Has Test Kits stockout	i. Has ARVs stockout	A. Number of EID tests carried out	B. Proportion of EID tests testing positive for HIV	1. Proportion of ANC1 with unknown status tested	2. Proportion of HIV+ women not yet on ART initiated	3. Proportion of women tested positive out of those tested	
Uganda	1328	1746	76%	19445	17833	371	819	319	766	91	40	4936	3.42%	96%	81%	2.08%	
Abim	7	8	88%	60	46	0	4	0	4	0	0	7	14.29%	82%	0%	0%	
Adjumani	12	12	100%	67	67	0	2	0	2	0	0	11	9.09%	103%	0%	0%	
Agago	7	9	78%	82	79	1	5	1	5	1	1	33	9.09%	103%	100%	1.27%	
Alebong	7	7	100%	96	84	3	4	3	4	1	1	23	8.7%	91%	100%	3.57%	
Amolatar	5	5	100%	99	98	2	3	1	3	1	1	18	11.11%	102%	50%	2.04%	
Amudat	4	4	100%	59	59	1	0	1	0	0	1	3	33.33%	100%	100%	1.69%	
Amuria	12	14	86%	184	113	0	5	0	4	5	0	26	0%	63%	0%	0%	
Amuru	8	8	100%	89	82	0	0	0	0	1	0	8	0%	92%	0%	0%	
Apac	12	12	100%	215	195	7	9	6	8	0	0	36	5.56%	95%	75%	3.59%	
Arua	40	43	93%	624	618	1	7	1	6	1	0	54	1.85%	100%	50%	0.16%	
Budaka	10	14	71%	142	137	2	2	2	2	0	0	7	0%	98%	100%	1.46%	
Bududa	9	9	100%	110	83	0	2	0	1	2	0	5	20%	77%	0%	0%	
Bugiri	14	15	93%	319	317	0	6	0	6	1	1	38	2.63%	101%	0%	0%	
Buhweju	6	6	100%	27	23	0	1	0	1	1	0	5	0%	88%	0%	0%	
Buikwe	16	32	50%	138	124	5	5	3	4	0	0			93%	100%	4.03%	
Bukedea	3	8	38%	66	65	1	2	1	1	0	0	14	0%	102%	50%	1.54%	
Bukwo	4	5	80%	46	46	0	3	0	0	0	0			107%	0%	0%	
Bulambuli	8	11	73%	44	44	0	0	0	0	1	0	9	11.11%	100%	0%	0%	
Buliisa	8	8	100%	116	112	1	4	1	4	0	0	9	0%	100%	100%	0.89%	
Bundibugyo	10	11	91%	168	156	0	4	0	4	1	1	4	0%	95%	0%	0%	
Bushenyi	12	18	67%	140	114	2	11	2	11	1	0	64	1.56%	88%	100%	1.75%	
Busia	11	24	46%	206	185	4	9	4	7	1	0	29	0%	94%	67%	2.16%	
Butaleja	13	14	93%	180	179	0	1	0	1	2	0	11	9.09%	100%	0%	0%	
Buvuma	1	10	10%	9	9	0	0	0	0	0	0	13	15.38%	100%	0%	0%	
Buyende	4	9	44%	90	57	0	0	0	1	0	0			63%	0%	0%	
Dokolo	5	5	100%	52	51	1	5	1	5	0	0	18	5.56%	109%	100%	1.96%	
Gulu	14	14	100%	184	161	5	23	6	12	1	0	115	1.74%	100%	33%	3.11%	
Hoima	25	25	100%	419	398	6	19	6	19	1	0	78	3.85%	100%	100%	1.51%	
Ibanda	9	10	90%	122	115	1	7	1	7	0	0	31	0%	100%	100%	0.87%	
Iganga	13	17	76%	210	210	3	5	3	4	0	2	47	2.13%	102%	75%	1.43%	
Isingiro	19	26	73%	193	173	2	10	2	10	4	2	56	7.14%	95%	100%	1.16%	

# Ministry of Health Option B+ Weekly Report (3.2)

Week ending 2017-08-20 (2017W33)

District and weekly rate				For Week ending 2017-08-20 (2017W33)									EID November 2015		Analysis		
Level	No of facilities reporting	No of registered facilities	Proportion of facilities reporting (reporting rate)	a. Total ANC1 visits	b. Total No of mothers tested at 1st ANC visit	c. Total No HIV Tested Positive at 1st ANC visit	d. Total No with known HIV+ status by ANC1	e. Total initiating Option B+ at 1st ANC visit	f. Total no on ART treatment by ANC1	h. Has Test Kits stockout	i. Has ARVs stockout	A. Number of EID tests carried out	B. Proportion of EID tests testing positive for HIV	1. Proportion of ANC1 with unknown status tested	2. Proportion of HIV+ women not yet on ART initiated	3. Proportion of women tested positive out of those tested	
Jinja	20	24	83%	393	378	10	10	9	10	2	3	83	3.61%	99%	90%	2.65%	
Kaabong	11	13	85%	89	87	0	2	0	0	0	0			100%	0%	0%	
Kabale	26	27	96%	204	196	2	7	2	6	1	0	53	5.66%	99%	67%	1.02%	
Kabarole	32	33	97%	387	345	9	28	12	29	0	1	154	3.25%	96%	150%	2.61%	
Kaberamaido	6	12	50%	70	55	0	3	0	3	2	0	19	10.53%	82%	0%	0%	
Kalangala	5	15	33%	25	14	0	7	1	7	0	0	32	0%	78%	0%	0%	
Kaliro	6	6	100%	130	116	3	1	3	1	1	1	9	0%	90%	100%	2.59%	
Kalungu	10	16	62%	73	54	2	5	1	5	2	0	49	0%	79%	50%	3.7%	
Kampala	32	40	80%	1619	1435	42	130	41	125	0	0	734	2.72%	96%	96%	2.93%	
Kamuli	10	17	59%	244	238	4	6	4	5	1	0	29	0%	100%	80%	1.68%	
Kamwenge	14	15	93%	208	201	0	4	0	4	1	0	58	3.45%	99%	0%	0%	
Kanungu	15	17	88%	99	94	4	4	2	5	2	0	23	8.7%	99%	50%	4.26%	
Kapchorwa	6	21	29%	67	66	0	1	0	1	0	0	5	0%	100%	0%	0%	
Kasese	39	40	98%	428	382	0	7	1	5	2	0	45	6.67%	91%	50%	0%	
Katakwi	5	12	42%	43	24	0	2	0	2	2	1			59%	0%	0%	
Kayunga	4	11	36%	109	103	2	8	2	3	0	0	26	0%	102%	29%	1.94%	
Kibaale	25	25	100%	714	685	17	22	18	21	0	0	59	5.08%	99%	100%	2.48%	
Kibuku	8	10	80%	138	136	0	2	1	5	2	0	3	0%	100%	-33%	0%	
Kiruhura	18	21	86%	138	97	2	3	3	3	3	1	51	3.92%	72%	150%	2.06%	
Kiryandongo	10	10	100%	190	189	3	1	3	1	0	0	24	4.17%	100%	100%	1.59%	
Kisoro	16	20	80%	160	154	0	3	0	3	0	0	26	0%	98%	0%	0%	
Kitgum	11	12	92%	105	112	4	5	4	5	0	0	59	0%	112%	100%	3.57%	
Koboko	8	8	100%	146	144	1	4	1	4	0	0	13	0%	101%	100%	0.69%	
Kole	5	5	100%	112	73	1	5	1	4	0	1	13	0%	68%	50%	1.37%	
Kotido	8	10	80%	63	61	0	1	0	1	0	1	4	0%	98%	0%	0%	
Kumi	6	9	67%	98	79	0	1	1	1	0	0	19	5.26%	81%	0%	0%	
Kween	5	5	100%	49	49	0	0	0	0	0	0			100%	0%	0%	
Kyankwanzi	8	12	67%	150	110	3	3	3	3	0	0	16	0%	75%	100%	2.73%	
Kyegegwa	9	9	100%	196	179	7	8	7	8	0	0	41	4.88%	95%	100%	3.91%	
Kyenjojo	18	18	100%	313	251	1	25	3	25	1	1	95	6.32%	87%	300%	0.4%	
Lamwo	5	9	56%	32	30	1	3	1	2	0	0	25	8%	103%	50%	3.33%	
Lira	15	19	79%	249	289	3	10	3	14	0	0	96	5.21%	121%	-300%	1.04%	

# Ministry of Health Option B+ Weekly Report (3.2)

Week ending 2017-08-20 (2017W33)

District and weekly rate				For Week ending 2017-08-20 (2017W33)									EID November 2015		Analysis		
Level	No of facilities reporting	No of registered facilities	Proportion of facilities reporting (reporting rate)	a. Total ANC1 visits	b. Total No of mothers tested at 1st ANC visit	c. Total No HIV Tested Positive at 1st ANC visit	d. Total No with known HIV+ status by ANC1	e. Total initiating Option B+ at 1st ANC visit	f. Total no on ART treatment by ANC1	h. Has Test Kits stockout	i. Has ARVs stockout	A. Number of EID tests carried out	B. Proportion of EID tests testing positive for HIV	1. Proportion of ANC1 with unknown status tested	2. Proportion of HIV+ women not yet on ART initiated	3. Proportion of women tested positive out of those tested	
Luuka	4	7	57%	83	80	0	1	0	1	0	0	4	0%	98%	0%	0%	
Luweero	27	62	44%	279	276	5	14	4	11	2	2	99	2.02%	104%	46%	1.81%	
Lwengo	12	13	92%	137	131	3	7	3	6	2	1	48	6.25%	101%	75%	2.29%	
Lyantonde	1	2	50%	3	2	0	1	0	1	1	0	38	7.89%	100%	0%	0%	
Manafwa	11	15	73%	184	184	3	4	2	3	0	0	8	0%	102%	50%	1.63%	
Maracha	10	10	100%	127	104	6	1	0	2	0	0			83%	0%	5.77%	
Masaka	18	21	86%	222	136	3	21	5	20	4	3	97	3.09%	68%	133%	2.21%	
Masindi	13	13	100%	234	209	2	11	2	10	0	0			94%	50%	0.96%	
Mayuge	10	14	71%	200	189	3	6	4	4	2	0	33	6.06%	97%	80%	1.59%	
Mbale	27	30	90%	346	414	27	15	5	14	1	0	59	1.69%	125%	100%	6.52%	
Mbarara	19	45	42%	225	159	7	17	7	17	5	0	162	4.94%	76%	100%	4.4%	
Mitooma	8	9	89%	75	72	1	5	1	4	0	0	10	0%	103%	50%	1.39%	
Mityana	26	26	100%	209	193	10	11	10	7	4	2	78	6.41%	97%	71%	5.18%	
Moroto	8	9	89%	31	31	1	0	1	1	1	0	5	0%	100%	200%	3.23%	
Moyo	14	14	100%	57	53	0	1	0	1	0	0	6	0%	95%	0%	0%	
Mpigi	2	2	100%	27	21	0	3	0	3	0	0	67	2.99%	88%	0%	0%	
Mubende	19	23	83%	457	385	8	23	7	18	3	0	138	0%	89%	64%	2.08%	
Mukono	7	22	32%	103	98	2	5	2	5	1	1			100%	100%	2.04%	
Nakapiripirit	12	14	86%	52	52	0	0	0	0	0	0	4	0%	100%	0%	0%	
Nakaseke	10	15	67%	144	132	3	1	2	2	1	0	33	3.03%	92%	100%	2.27%	
Nakasongola	13	24	54%	108	98	1	9	1	8	1	0	22	4.55%	99%	50%	1.02%	
Namayingo	7	20	35%	67	60	2	1	2	1	1	0	26	3.85%	91%	100%	3.33%	
Namutumba	6	7	86%	160	155	4	4	4	4	0	0			99%	100%	2.58%	
Napak	8	8	100%	117	117	0	1	0	1	0	0	6	0%	101%	0%	0%	
Nebbi	21	21	100%	366	359	9	8	5	8	0	0	40	2.5%	100%	56%	2.51%	
Ngora	6	8	75%	54	53	0	1	0	1	0	0	12	0%	100%	0%	0%	
Ntoroko	4	4	100%	30	30	0	0	0	0	0	0	5	0%	100%	0%	0%	
Ntungamo	17	17	100%	274	176	5	8	5	8	3	1	39	2.56%	66%	100%	2.84%	
Nwoya	7	7	100%	92	87	2	5	2	5	1	0	25	0%	100%	100%	2.3%	
Omoro	6	7	86%	29	26	2	1	1	1	0	0			93%	50%	7.69%	
Otuke	7	7	100%	97	94	1	3	0	3	0	0	10	0%	100%	0%	1.06%	
Oyam	7	7	100%	81	109	5	6	5	6	0	2	40	0%	145%	100%	4.59%	

# Ministry of Health Option B+ Weekly Report (3.2)

Week ending 2017-08-20 (2017W33)

District and weekly rate				For Week ending 2017-08-20 (2017W33)									EID November 2015		Analysis		
Level	No of facilities reporting	No of registered facilities	Proportion of facilities reporting (reporting rate)	a. Total ANC1 visits	b. Total No of mothers tested at 1st ANC visit	c. Total No HIV Tested Positive at 1st ANC visit	d. Total No with known HIV+ status by ANC1	e. Total initiating Option B+ at 1st ANC visit	f. Total no on ART treatment by ANC1	h. Has Test Kits stockout	i. Has ARVs stockout	A. Number of EID tests carried out	B. Proportion of EID tests testing positive for HIV	1. Proportion of ANC1 with unknown status tested	2. Proportion of HIV+ women not yet on ART initiated	3. Proportion of women tested positive out of those tested	
Pader	10	11	91%	87	81	2	6	2	6	1	1	50	4%	100%	100%	2.47%	
Pallisa	16	21	76%	232	245	1	1	1	1	0	1	12	0%	106%	100%	0.41%	
Rakai	29	35	83%	186	164	7	18	6	18	3	1	155	3.23%	98%	83%	4.27%	
Rubirizi	7	8	88%	59	39	0	2	0	1	1	0	16	0%	68%	0%	0%	
Rukungiri	18	19	95%	192	174	3	14	4	14	0	1	61	1.64%	98%	133%	1.72%	
Serere	10	14	71%	106	92	1	4	1	4	0	2	38	7.89%	90%	100%	1.09%	
Sheema	7	9	78%	84	71	3	10	3	10	0	0	51	1.96%	96%	100%	4.23%	
Sironko	13	19	68%	197	169	19	1	2	1	1	1	10	0%	86%	11%	11.24%	
Soroti	12	21	57%	161	147	0	8	0	8	0	0	42	4.76%	96%	0%	0%	
Tororo	19	25	76%	283	284	6	10	5	10	0	0	59	1.69%	104%	83%	2.11%	
Wakiso	53	103	51%	1058	949	40	66	38	64	4	1	252	4.37%	96%	93%	4.21%	
Yumbe	13	13	100%	314	313	1	1	1	1	0	0	13	7.69%	100%	100%	0.32%	
Zombo	10	11	91%	219	194	4	5	4	5	0	0	23	4.35%	91%	100%	2.06%	

EID data provided by CPHL up to 2015-12-10 cumulative for the entire month of November 2015

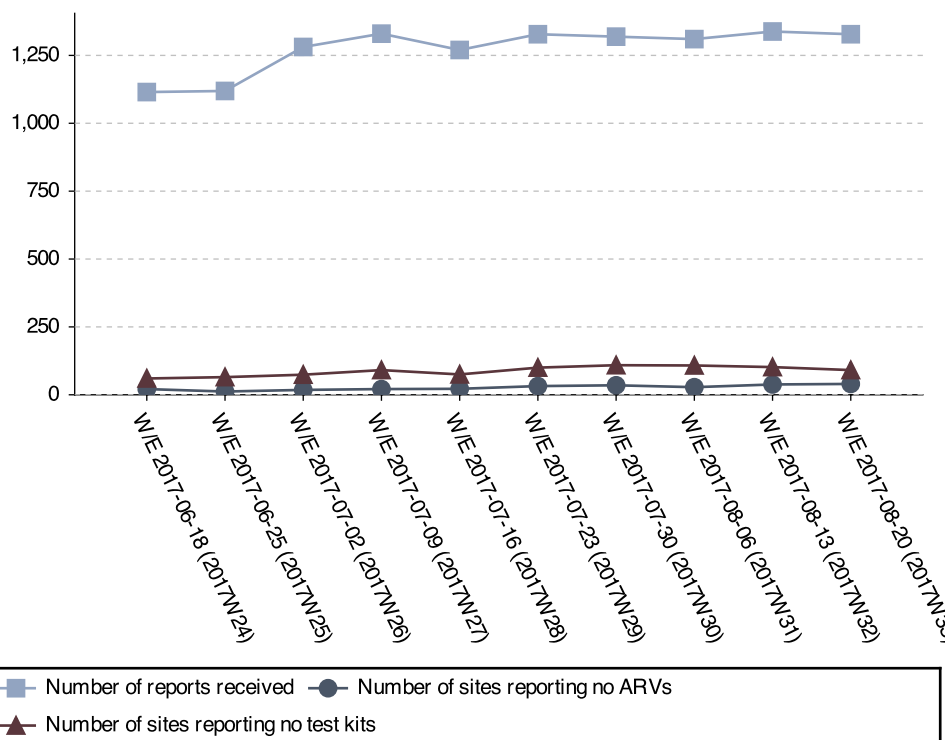
# Ministry of Health Option B+ Weekly Report (3.2)

Week ending 2017-08-20 (2017W33)

## Stock-outs for the last 6 weeks per facility level

	2017W33		2017W32		2017W31		2017W30		2017W29		2017W28	
	ARVs	HIV Test kits	ARVs	HIV Test kits	ARVs	HIV Test kits	ARVs	HIV Test kits	ARVs	HIV Test kits	ARVs	HIV Test kits
Clinic	2	0	2	1	2	0	0	0	0	1	0	1
General Hospital	0	0	1	1	1	2	1	5	1	2	0	0
HC II	4	24	2	29	3	27	4	30	5	24	5	17
HC III	29	72	27	75	21	79	27	75	23	68	16	55
HC IV	5	7	5	10	3	12	4	6	4	11	1	4
NR Hospital	0	0	0	0	0	0	0	0	0	0	0	0
Other/unknown	0	1	1	0	0	0	0	2	0	1	0	1
RR Hospital	0	0	0	0	0	0	0	1	0	0	0	0
<b>Total</b>	<b>40</b>	<b>104</b>	<b>38</b>	<b>116</b>	<b>30</b>	<b>120</b>	<b>36</b>	<b>119</b>	<b>33</b>	<b>107</b>	<b>22</b>	<b>78</b>

## Stock-out trends for the last 10 weeks



## Current stock-outs per IP

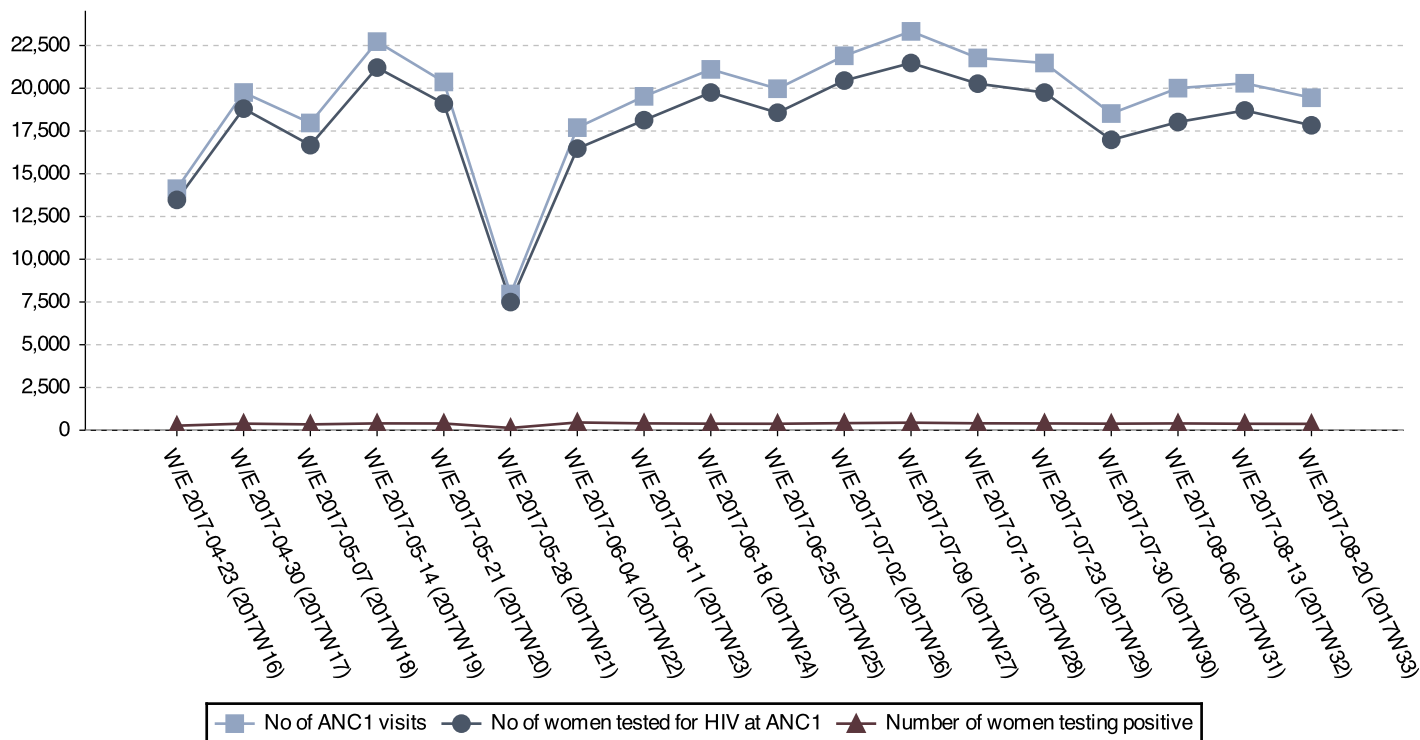
IP	Test kit stockout	ARV stockout
RHITES-SW	21	5
Mildmay	14	4
PREFA	13	6
STAR-E	9	2
TASO Teso	9	3
RHITES-EC	7	4
USAID ASSIST	7	7
Baylor	5	3
MJAP	5	0
RHSP	3	1
HIWA	2	0
IDI	2	0
TASO	2	3
IRCU	1	0
Walter Reed	1	1
RTI	1	1
CUAMM	1	2
USAID PHS	1	0
<b>Total</b>	<b>104</b>	<b>42</b>



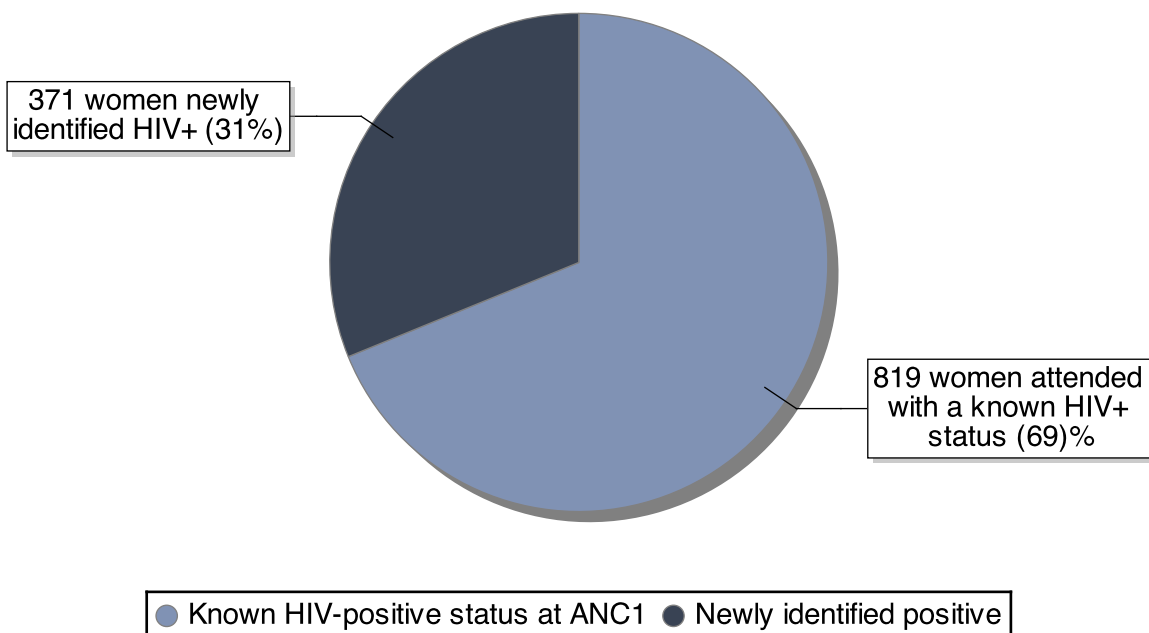
# Ministry of Health Option B+ Weekly Report (3.2)

Week ending 2017-08-20 (2017W33)

ANC trends for the last 18 weeks



Break down of existing vs. newly identified infections



Ratio newly identified / already known status: 0.45

# Ministry of Health Option B+ Weekly Report (3.2)

Week ending 2017-08-20 (2017W33)

## District Service Delivery Focus

### High HIV+ EID Testing

This section shows 20 districts with high proportions of HIV+ 1st PCR EID tests. Please consider both the actual number and the proportion.

District	# EID Tests	# Positive	% Positive
Amudat	3	1	33.33
Bududa	5	1	20.00
Buvuma	13	2	15.38
Abim	7	1	14.29
Amolatar	18	2	11.11
Bulambuli	9	1	11.11
Kaberamaido	19	2	10.53
Agago	33	3	9.09
Butaleja	11	1	9.09
Adjumani	11	1	9.09
Alebtong	23	2	8.70
Kanungu	23	2	8.70
Lamwo	25	2	8.00
Serere	38	3	7.89
Lyantonde	38	3	7.89
Yumbe	13	1	7.69
Isingiro	56	4	7.14
Kasese	45	3	6.67
Mityana	78	5	6.41
Kyenjojo	95	6	6.32
Lwengo	48	3	6.25
Mayuge	33	2	6.06
Kabale	53	3	5.66
Dokolo	18	1	5.56
Apac	36	2	5.56

### Low initiation on ART

This section shows 15 districts with low ART initiation rates. Please consider the actual ART need in addition to the proportion.

District	ART Need	# Initiated	% Initiated
Amuria	1	0	0
Bukwo	3	0	0
Maracha	5	0	0
Rubirizi	1	0	0
Bududa	1	0	0
Otuke District	1	0	0
Kaabong	2	0	0
Sironko	19	2	11
Kayunga	7	2	29
Gulu District	16	6	33
Luweero	8	4	46
Kole District	2	1	50
Arua District	2	1	50
Bukedea	2	1	50
Kalungu	2	1	50

## Data Quality challenges by IP

### 'Overtesting'

IPs listed here have 'overtested' – which means that there are issues with data quality. Ensure that facilities have the latest version of the job aide, and that health workers understand that most indicators pertain to ANC1 visits only.

IP	# ANC1 Visits	# Tested	% Tested
UPMB	98	103	112
RTI	112	108	109
UCMB	518	520	107
STAR-E	1695	1701	102
UHMG	62	62	102

### 'Overinitiating'

IPs listed here have 'overinitiated' – which means that there are issues with data quality. Ensure that facilities have the latest version of the job aide, and that health workers understand that most indicators pertain to ANC1 visits only.

IP	ART Need	# Initiated	% Initiated
Baylor	17	21	124
IRCU	5	6	120
USAID PHS	12	11	114
SUSTAIN	16	18	112
MJAP	16	17	105

None of the proportions mentioned above should exceed 100%, as all proportions relate to ANC1 visits only. They take both women with a known positive status and women already on ART into consideration. Please see <http://reports.dhis2sms.ug> for further details, including detailed facility data.