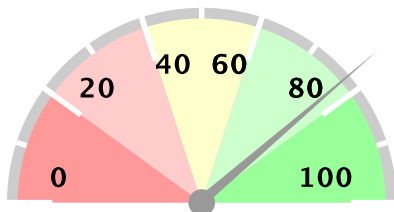


# Ministry of Health Option B+ Weekly Report (3.2)

Week ending 2017-08-13 (2017W32)

## Summary

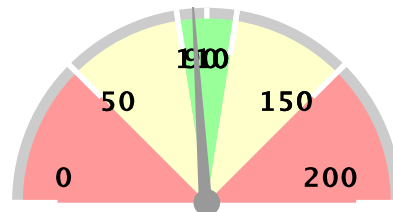
Weekly reporting rate



**77%**

1353 reports received out of 1746 registered facilities

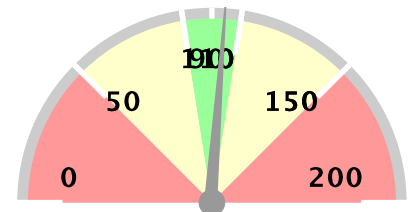
% of ANC1 attendees tested for HIV



**96%**

20745 ANC1 visits

% of women initiated on Option B+



**105%**

406 initiated on ART

### Stockouts and missed appointments

Facilities without ARVs	38	3%
Facilities without test kits	103	8%
Number missed appointments	974	

### 1st PCR EID testing for August 2015\*

Number of EID tests	4936
Number of positive EID tests	169
Proportion testing positive	3.42%

### The week in numbers

Number of reports received this week	1353	Number of facilities registered for B+	1746
--------------------------------------	------	--	------

### Testing coverage for this week

Number of ANC 1 visits	20745
No. tested for HIV at ANC 1	92% 19098
No. HIV+ women identified at ANC 1	1180
Newly identified thru testing	33% 388
With a known status	67% 792
Proportion newly tested +ve at ANC 1	2.03%
Proportion of +ve women at ANC 1	5.69%

### ART coverage for this week

Total HIV + Women at ANC 1	1180
Total already on ART	67% 787
Total to be initiated	66% 774
Total no of women initiated on ART	406
Proportion of women initiated on ART	191%
Proportion with known status already on ART	99.37%

This proportion shows how many women who have a known positive status are already on ART

The data as presented in this report using data from MoH/EOC Weekly Reporting and CPHL. PMTCT service delivery data is weekly data, EID testing data is cumulative monthly. EID number includes data up 2013-09-01. Starting from June 2014, EID data contains only 1st PCR tests.

# Ministry of Health Option B+ Weekly Report (3.2)

Week ending 2017-08-13 (2017W32)

## Overall performance per IP

Note: IP data does not add up to national totals due to the fact that IPs overlap in districts. EID data is aggregate for all districts in which an IP operates, and not based on individual facilities supported by an IP.

District and weekly rate				For Week ending 2017-08-13 (2017W32)									EID November 2015		Analysis		
Level	No of facilities reporting	No of registered facilities	Proportion of facilities reporting (reporting rate)	a. Total ANC1 visits	b. Total No of mothers tested at 1st ANC visit	c. Total No HIV Tested Positive at 1st ANC visit	d. Total No with known HIV+ status by ANC1	e. Total initiating Option B+ at 1st ANC visit	f. Total no on ART treatment by ANC1	h. Has Test Kits stockout	i. Has ARVs stockout	A. Number of EID tests carried out	B. Proportion of EID tests testing positive for HIV	1. Proportion of ANC1 with unknown status tested	2. Proportion of HIV+ women not yet on ART initiated	3. Proportion of women tested positive out of those tested	
Uganda	1338	1746	77%	20292	18703	377	771	395	764	102	38	4936	3.42%	96%	105%	2.02%	
Baylor	117	119	98%	1500	1385	21	64	24	64	4	2	402	4.48%	96%	114%	1.52%	
CAF	5	6	83%	29	17	0	12	0	12	0	0	1133	3.09%	100%	0%	0%	
CUAMM	56	63	89%	408	399	1	4	1	4	2	3	29	6.9%	99%	0%	0.25%	
HIWA	7	7	100%	67	71	4	4	2	22	1	0	1142	2.63%	113%	-7%	5.63%	
IDI-KCC	7	7	100%	1051	817	34	54	33	62	0	0	734	2.72%	82%	127%	4.16%	
IDI	195	197	99%	3255	3105	36	73	31	70	3	0	330	3.64%	98%	83%	1.16%	
IRCU	15	15	100%	389	386	8	14	9	15	1	0	1457	3.09%	103%	121%	2.07%	
Kalangala	13	15	87%	33	24	0	5	0	4	1	0	32	0%	86%	0%	0%	
Mildmay	129	154	84%	2180	1962	58	105	56	105	13	3	775	3.1%	95%	89%	2.96%	
MJAP	19	22	86%	565	450	17	35	22	33	6	2	896	3.12%	85%	119%	3.78%	
MRC-UVRI	0	1	0%									734	2.72%	null%	null%		
PREFA	112	128	88%	1809	1655	60	105	57	105	13	5	567	3.53%	97%	91%	3.63%	
Reach Out	7	7	100%	36	29	2	7	1	7	0	0	1085	3.04%	100%	100%	6.9%	
RHITES-EC	82	121	68%	1690	1639	21	38	22	29	7	3	279	2.15%	99%	72%	1.28%	
RHITES-SW	198	215	92%	2042	1775	44	77	39	76	24	8	648	3.55%	90%	98%	2.48%	
RHSP	22	35	63%	183	183	5	13	5	14	1	0	155	3.23%	108%	133%	2.73%	
RHU	0	1	0%									64	1.56%	null%	null%		
RTI	12	19	63%	123	120	5	14	3	11	3	0	2002	3.05%	110%	38%	4.17%	
STAR-E	129	165	78%	1819	1819	26	32	16	28	10	3	150	2.67%	102%	70%	1.43%	
SUSTAIN	12	13	92%	760	693	26	48	23	44	0	0	877	2.85%	97%	77%	3.75%	
TASO	52	65	80%	641	592	9	28	9	28	3	3	1672	3.11%	97%	100%	1.52%	
TASO Teso	59	93	63%	824	614	7	26	6	21	13	4	170	4.71%	77%	45%	1.14%	
UCMB	17	18	94%	611	593	6	20	6	19	0	0	1907	2.83%	100%	86%	1.01%	
UHMG	4	18	22%	22	24	2	0	2	1	0	0	1232	3.17%	109%	0%	8.33%	
UPMB	8	13	62%	91	95	1	3	1	4	0	0	1399	3.5%	108%	0%	1.05%	
USAID ASSIST	110	126	87%	1228	1161	28	56	69	55	7	6	569	3.69%	99%	238%	2.41%	
USAID PHS	39	39	100%	543	534	12	20	12	20	2	0	2064	3.29%	102%	106%	2.25%	

# Ministry of Health Option B+ Weekly Report (3.2)

Week ending 2017-08-13 (2017W32)

District and weekly rate			For Week ending 2017-08-13 (2017W32)									EID November 2015		Analysis		
Level	No of facilities reporting	No of registered facilities Proportion of facilities reporting (reporting rate)	a. Total ANC1 visits	b. Total No of mothers tested at 1st ANC visit	c. Total No HIV Tested Positive at 1st ANC visit	d. Total No with known HIV+ status by ANC1	e. Total initiating Option B+ at 1st ANC visit	f. Total no on ART treatment by ANC1	h. Has Test Kits stockout	i. Has ARVs stockout	A. Number of EID tests carried out	B. Proportion of EID tests testing positive for HIV	1. Proportion of ANC1 with unknown status tested	2. Proportion of HIV+ women not yet on ART initiated	3. Proportion of women tested positive out of those tested	
Walter Reed	25	64 39%	463	441	8	13	10	12	1	0	39	5.13%	98%	80%	1.81%	

EID data provided by CPHL up to 2015-12-10 cumulative for the entire month of November 2015

## Overall performance per district

Note:

# Ministry of Health Option B+ Weekly Report (3.2)

Week ending 2017-08-13 (2017W32)

District and weekly rate				For Week ending 2017-08-13 (2017W32)									EID November 2015		Analysis		
Level	No of facilities reporting	No of registered facilities	Proportion of facilities reporting (reporting rate)	a. Total ANC1 visits	b. Total No of mothers tested at 1st ANC visit	c. Total No HIV Tested Positive at 1st ANC visit	d. Total No with known HIV+ status by ANC1	e. Total initiating Option B+ at 1st ANC visit	f. Total no on ART treatment by ANC1	h. Has Test Kits stockout	i. Has ARVs stockout	A. Number of EID tests carried out	B. Proportion of EID tests testing positive for HIV	1. Proportion of ANC1 with unknown status tested	2. Proportion of HIV+ women not yet on ART initiated	3. Proportion of women tested positive out of those tested	
Uganda	1338	1746	77%	20292	18703	377	771	395	764	102	38	4936	3.42%	96%	105%	2.02%	
Abim	7	8	88%	41	40	1	1	1	1	1	1	7	14.29%	100%	0%	2.5%	
Adjumani	12	12	100%	122	119	3	2	3	2	0	0	11	9.09%	99%	100%	2.52%	
Agago	6	9	67%	65	63	3	5	3	6	1	1	33	9.09%	105%	150%	4.76%	
Alebong	6	7	86%	72	72	2	1	2	0	0	1	23	8.7%	101%	67%	2.78%	
Amolatar	4	5	80%	52	51	2	4	2	4	1	1	18	11.11%	106%	100%	3.92%	
Amudat	4	4	100%	40	40	0	0	0	0	0	1	3	33.33%	100%	0%	0%	
Amuria	13	14	93%	226	81	1	7	1	5	6	0	26	0%	37%	0%	1.23%	
Amuru	8	8	100%	76	69	2	2	2	2	3	2	8	0%	93%	100%	2.9%	
Apac	12	12	100%	192	173	3	5	3	5	0	0	36	5.56%	93%	100%	1.73%	
Arua	40	43	93%	593	578	7	5	6	6	1	0	54	1.85%	98%	133%	1.21%	
Budaka	8	14	57%	131	147	0	0	0	0	0	0	7	0%	112%	0%	0%	
Bududa	9	9	100%	135	121	2	2	0	1	2	1	5	20%	91%	0%	1.65%	
Bugiri	15	15	100%	280	290	2	5	2	6	1	2	38	2.63%	105%	200%	0.69%	
Buhweju	6	6	100%	30	30	0	0	0	0	2	0	5	0%	100%	0%	0%	
Buikwe	14	32	44%	123	132	3	5	4	7	0	0			112%	100%	2.27%	
Bukedea	4	8	50%	95	91	1	5	1	3	0	0	14	0%	101%	33%	1.1%	
Bukwo	5	5	100%	44	44	1	0	1	0	1	0			100%	100%	2.27%	
Bulambuli	8	11	73%	77	74	1	3	1	2	1	0	9	11.11%	100%	50%	1.35%	
Buliisa	8	8	100%	103	96	2	7	2	7	0	0	9	0%	100%	100%	2.08%	
Bundibugyo	10	11	91%	153	123	0	2	0	2	0	2	4	0%	81%	0%	0%	
Bushenyi	13	18	72%	135	126	1	9	0	9	0	0	64	1.56%	100%	0%	0.79%	
Busia	11	24	46%	239	216	5	8	5	7	1	0	29	0%	94%	83%	2.31%	
Butaleja	12	14	86%	193	192	1	1	1	1	1	0	11	9.09%	100%	100%	0.52%	
Buvuma	2	10	20%	19	18	0	1	0	1	0	0	13	15.38%	100%	0%	0%	
Buyende	4	9	44%	109	48	0	0	0	1	1	0			44%	0%	0%	
Dokolo	5	5	100%	56	55	0	1	1	1	0	0	18	5.56%	100%	0%	0%	
Gulu	11	14	79%	167	159	6	13	5	16	1	0	115	1.74%	103%	200%	3.77%	
Hoima	24	25	96%	470	455	10	15	10	15	1	0	78	3.85%	100%	100%	2.2%	
Ibanda	10	10	100%	110	103	3	7	1	7	0	0	31	0%	100%	33%	2.91%	
Iganga	13	17	76%	358	332	6	6	6	6	0	0	47	2.13%	94%	117%	1.81%	
Isingiro	23	26	88%	275	267	6	6	5	7	2	2	56	7.14%	99%	125%	2.25%	

# Ministry of Health Option B+ Weekly Report (3.2)

Week ending 2017-08-13 (2017W32)

District and weekly rate				For Week ending 2017-08-13 (2017W32)									EID November 2015		Analysis		
Level	No of facilities reporting	No of registered facilities	Proportion of facilities reporting (reporting rate)	a. Total ANC1 visits	b. Total No of mothers tested at 1st ANC visit	c. Total No HIV Tested Positive at 1st ANC visit	d. Total No with known HIV+ status by ANC1	e. Total initiating Option B+ at 1st ANC visit	f. Total no on ART treatment by ANC1	h. Has Test Kits stockout	i. Has ARVs stockout	A. Number of EID tests carried out	B. Proportion of EID tests testing positive for HIV	1. Proportion of ANC1 with unknown status tested	2. Proportion of HIV+ women not yet on ART initiated	3. Proportion of women tested positive out of those tested	
Jinja	21	24	88%	369	315	10	17	10	15	3	3	83	3.61%	89%	83%	3.17%	
Kaabong	12	13	92%	103	96	0	0	0	0	0	0			93%	0%	0%	
Kabale	27	27	100%	217	192	3	7	3	8	1	1	53	5.66%	91%	150%	1.56%	
Kabarole	30	33	91%	338	299	6	26	7	26	1	0	154	3.25%	96%	117%	2.01%	
Kaberamaido	7	12	58%	94	73	0	4	0	4	4	1	19	10.53%	81%	0%	0%	
Kalangala	13	15	87%	33	24	0	5	0	4	1	0	32	0%	86%	0%	0%	
Kaliro	5	6	83%	89	77	1	2	1	2	2	0	9	0%	89%	100%	1.3%	
Kalungu	13	16	81%	116	84	2	5	3	3	2	0	49	0%	76%	100%	2.38%	
Kampala	31	40	78%	1861	1580	49	96	53	120	0	0	734	2.72%	90%	200%	3.1%	
Kamuli	10	17	59%	209	174	3	4	3	3	0	0	29	0%	85%	75%	1.72%	
Kamwenge	14	15	93%	185	170	2	9	2	9	1	0	58	3.45%	97%	100%	1.18%	
Kanungu	17	17	100%	127	113	4	5	3	5	1	1	23	8.7%	93%	75%	3.54%	
Kapchorwa	6	21	29%	59	57	2	1	2	1	0	0	5	0%	98%	100%	3.51%	
Kasese	39	40	98%	481	474	3	9	4	9	1	0	45	6.67%	100%	133%	0.63%	
Katakwi	5	12	42%	43	27	0	3	0	3	2	0			68%	0%	0%	
Kayunga	6	11	55%	230	225	2	5	2	3	0	0	26	0%	100%	50%	0.89%	
Kibaale	25	25	100%	651	582	13	25	11	23	0	0	59	5.08%	93%	100%	2.23%	
Kibuku	10	10	100%	151	144	0	0	0	0	2	1	3	0%	95%	0%	0%	
Kiruhura	18	21	86%	167	139	3	9	2	10	3	0	51	3.92%	88%	100%	2.16%	
Kiryandongo	10	10	100%	218	211	2	6	0	6	0	0	24	4.17%	100%	0%	0.95%	
Kisoro	15	20	75%	176	172	2	2	1	2	2	0	26	0%	99%	50%	1.16%	
Kitgum	11	12	92%	123	121	1	10	1	10	0	0	59	0%	107%	100%	0.83%	
Koboko	8	8	100%	135	133	0	2	0	2	0	0	13	0%	100%	0%	0%	
Kole	5	5	100%	80	78	2	2	2	2	0	0	13	0%	100%	100%	2.56%	
Kotido	8	10	80%	80	80	0	0	0	0	0	1	4	0%	100%	0%	0%	
Kumi	6	9	67%	87	84	0	3	0	3	0	1	19	5.26%	100%	0%	0%	
Kween	5	5	100%	40	40	0	0	0	0	0	0			100%	0%	0%	
Kyankwanzi	7	12	58%	141	96	3	3	5	1	2	0	16	0%	70%	100%	3.12%	
Kyegegwa	9	9	100%	145	136	6	10	6	10	1	0	41	4.88%	101%	100%	4.41%	
Kyenjojo	18	18	100%	302	285	5	14	5	14	0	0	95	6.32%	99%	100%	1.75%	
Lamwo	6	9	67%	44	42	1	2	1	2	0	0	25	8%	100%	100%	2.38%	
Lira	14	19	74%	220	202	17	17	54	11	0	0	96	5.21%	100%	235%	8.42%	

# Ministry of Health Option B+ Weekly Report (3.2)

Week ending 2017-08-13 (2017W32)

District and weekly rate				For Week ending 2017-08-13 (2017W32)									EID November 2015		Analysis		
Level	No of facilities reporting	No of registered facilities	Proportion of facilities reporting (reporting rate)	a. Total ANC1 visits	b. Total No of mothers tested at 1st ANC visit	c. Total No HIV Tested Positive at 1st ANC visit	d. Total No with known HIV+ status by ANC1	e. Total initiating Option B+ at 1st ANC visit	f. Total no on ART treatment by ANC1	h. Has Test Kits stockout	i. Has ARVs stockout	A. Number of EID tests carried out	B. Proportion of EID tests testing positive for HIV	1. Proportion of ANC1 with unknown status tested	2. Proportion of HIV+ women not yet on ART initiated	3. Proportion of women tested positive out of those tested	
Luuka	3	7	43%	46	143	0	0	0	0	0	0	4	0%	311%	0%	0%	
Luweero	27	62	44%	351	384	12	15	9	13	2	2	99	2.02%	114%	65%	3.12%	
Lwengo	12	13	92%	188	170	3	15	4	15	2	1	48	6.25%	98%	100%	1.76%	
Lyantonde	1	2	50%	4	1	0	3	0	3	1	0	38	7.89%	100%	0%	0%	
Manafwa	8	15	53%	102	108	1	0	1	0	0	0	8	0%	106%	100%	0.93%	
Maracha	10	10	100%	125	124	0	1	0	1	0	0			100%	0%	0%	
Masaka	18	21	86%	210	185	9	21	7	20	4	2	97	3.09%	98%	78%	4.86%	
Masindi	12	13	92%	163	151	2	10	2	10	0	0			99%	100%	1.32%	
Mayuge	10	14	71%	202	187	2	8	2	2	1	0	33	6.06%	96%	25%	1.07%	
Mbale	28	30	93%	361	385	14	14	5	16	1	0	59	1.69%	111%	83%	3.64%	
Mbarara	19	45	42%	245	157	11	12	11	13	6	2	162	4.94%	67%	117%	7.01%	
Mitooma	9	9	100%	89	84	3	5	3	5	0	0	10	0%	100%	100%	3.57%	
Mityana	26	26	100%	217	194	4	10	2	12	3	1	78	6.41%	94%	100%	2.06%	
Moroto	8	9	89%	62	62	0	1	0	0	1	0	5	0%	102%	0%	0%	
Moyo	14	14	100%	79	78	1	3	1	3	0	0	6	0%	103%	100%	1.28%	
Mpigi	2	2	100%	29	25	0	1	0	1	0	0	67	2.99%	89%	0%	0%	
Mubende	20	23	87%	444	384	9	17	8	17	3	0	138	0%	90%	89%	2.34%	
Mukono	9	22	41%	143	128	4	6	5	5	1	0			93%	100%	3.12%	
Nakapiripirit	12	14	86%	55	54	0	1	0	1	0	0	4	0%	100%	0%	0%	
Nakaseke	10	15	67%	157	137	1	3	1	2	1	0	33	3.03%	89%	50%	0.73%	
Nakasongola	12	24	50%	141	119	4	3	3	6	1	0	22	4.55%	86%	80%	3.36%	
Namayingo	7	20	35%	54	56	1	1	2	0	1	1	26	3.85%	106%	100%	1.79%	
Namutumba	5	7	71%	126	138	2	3	2	2	0	0			112%	67%	1.45%	
Napak	7	8	88%	60	60	0	2	0	2	0	0	6	0%	103%	0%	0%	
Nebbi	21	21	100%	435	428	4	9	4	8	0	0	40	2.5%	100%	80%	0.93%	
Ngora	6	8	75%	62	62	2	1	2	1	1	1	12	0%	102%	100%	3.23%	
Ntoroko	4	4	100%	33	26	0	0	0	0	0	0	5	0%	79%	0%	0%	
Ntungamo	17	17	100%	307	242	2	11	4	11	5	2	39	2.56%	82%	200%	0.83%	
Nwoya	7	7	100%	91	83	2	8	2	8	1	0	25	0%	100%	100%	2.41%	
Omoro	4	7	57%	36	32	0	4	0	5	0	0			100%	0%	0%	
Otuke	7	7	100%	84	80	1	4	1	4	0	0	10	0%	100%	100%	1.25%	
Oyam	7	7	100%	136	131	2	4	3	4	0	1	40	0%	99%	150%	1.53%	

# Ministry of Health Option B+ Weekly Report (3.2)

Week ending 2017-08-13 (2017W32)

District and weekly rate				For Week ending 2017-08-13 (2017W32)									EID November 2015		Analysis		
Level	No of facilities reporting	No of registered facilities	Proportion of facilities reporting (reporting rate)	a. Total ANC1 visits	b. Total No of mothers tested at 1st ANC visit	c. Total No HIV Tested Positive at 1st ANC visit	d. Total No with known HIV+ status by ANC1	e. Total initiating Option B+ at 1st ANC visit	f. Total no on ART treatment by ANC1	h. Has Test Kits stockout	i. Has ARVs stockout	A. Number of EID tests carried out	B. Proportion of EID tests testing positive for HIV	1. Proportion of ANC1 with unknown status tested	2. Proportion of HIV+ women not yet on ART initiated	3. Proportion of women tested positive out of those tested	
Pader	11	11	100%	104	96	2	8	2	5	0	0	50	4%	100%	40%	2.08%	
Pallisa	17	21	81%	258	267	2	4	2	2	0	0	12	0%	105%	50%	0.75%	
Rakai	22	35	63%	183	183	5	13	5	14	1	0	155	3.23%	108%	133%	2.73%	
Rubirizi	8	8	100%	57	44	0	6	0	2	1	0	16	0%	86%	0%	0%	
Rukungiri	17	19	89%	168	157	6	8	6	7	1	0	61	1.64%	98%	86%	3.82%	
Serere	10	14	71%	131	130	1	1	1	1	0	1	38	7.89%	100%	100%	0.77%	
Sheema	8	9	89%	86	82	1	4	1	4	0	0	51	1.96%	100%	100%	1.22%	
Sironko	15	19	79%	195	192	0	3	0	3	1	1	10	0%	100%	0%	0%	
Soroti	11	21	52%	133	112	2	2	1	1	0	0	42	4.76%	85%	33%	1.79%	
Tororo	20	25	80%	286	279	2	9	2	8	0	0	59	1.69%	101%	67%	0.72%	
Wakiso	57	103	55%	1227	1122	42	82	40	82	6	0	252	4.37%	98%	95%	3.74%	
Yumbe	13	13	100%	313	311	1	2	1	2	0	0	13	7.69%	100%	100%	0.32%	
Zombo	9	11	82%	219	200	1	2	1	2	1	0	23	4.35%	92%	100%	0.5%	

EID data provided by CPHL up to 2015-12-10 cumulative for the entire month of November 2015

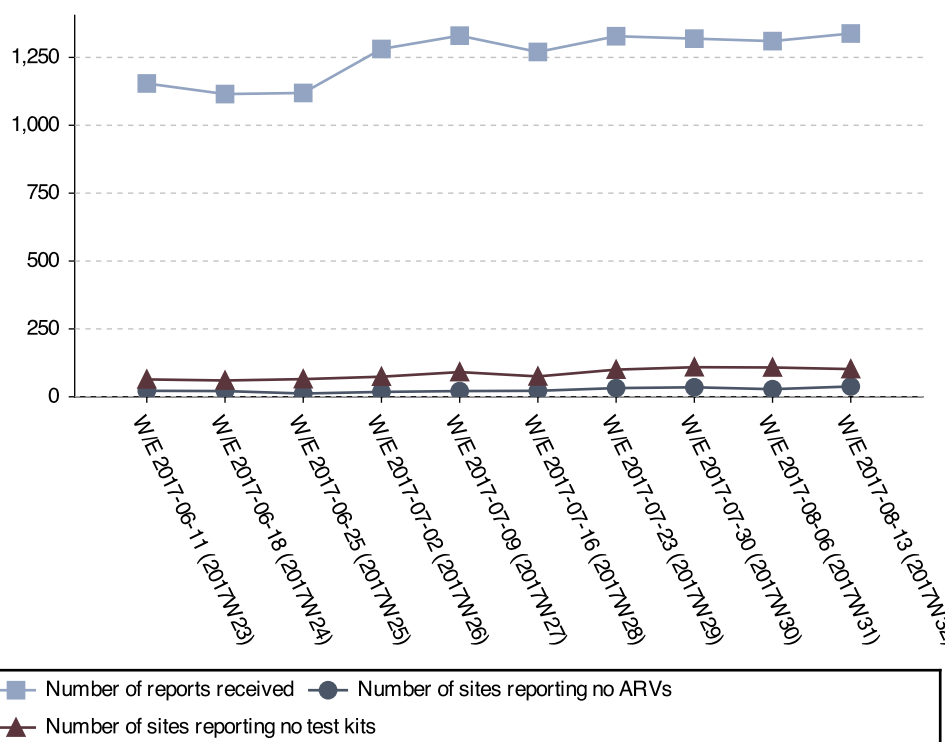
# Ministry of Health Option B+ Weekly Report (3.2)

Week ending 2017-08-13 (2017W32)

## Stock-outs for the last 6 weeks per facility level

	2017W32		2017W31		2017W30		2017W29		2017W28		2017W27	
	ARVs	HIV Test kits	ARVs	HIV Test kits	ARVs	HIV Test kits	ARVs	HIV Test kits	ARVs	HIV Test kits	ARVs	HIV Test kits
Clinic	2	1	2	0	0	0	0	1	0	1	2	1
General Hospital	1	1	1	2	1	5	1	2	0	0	0	4
HC II	2	29	3	27	4	30	5	24	5	17	3	18
HC III	27	75	21	79	27	75	23	68	16	55	14	66
HC IV	5	10	3	12	4	6	4	11	1	4	2	8
NR Hospital	0	0	0	0	0	0	0	0	0	0	0	0
Other/unknown	1	0	0	0	0	2	0	1	0	1	0	0
RR Hospital	0	0	0	0	0	1	0	0	0	0	0	0
<b>Total</b>	<b>38</b>	<b>116</b>	<b>30</b>	<b>120</b>	<b>36</b>	<b>119</b>	<b>33</b>	<b>107</b>	<b>22</b>	<b>78</b>	<b>21</b>	<b>97</b>

## Stock-out trends for the last 10 weeks



## Current stock-outs per IP

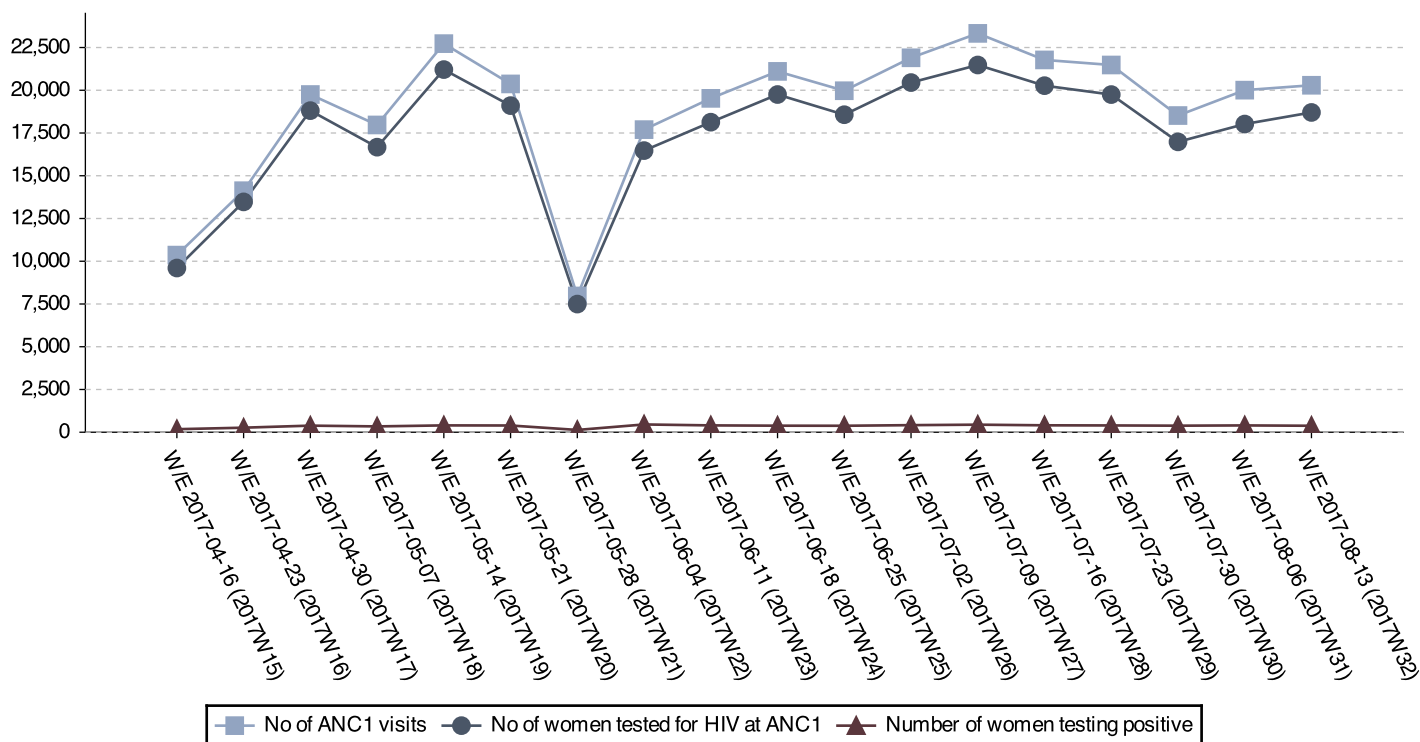
IP	Test kit stockout	ARV stockout
RHITES-SW	24	8
TASO Teso	13	4
PREFA	13	5
Mildmay	13	3
STAR-E	10	3
USAID ASSIST	7	6
RHITES-EC	7	3
MJAP	6	2
Baylor	4	2
TASO	3	3
RTI	3	0
IDI	3	0
CUAMM	2	3
USAID PHS	2	0
Walter Reed	1	0
IRCU	1	0
RHSP	1	0
HIWA	1	0
Kalangala	1	0
<b>Total</b>	<b>115</b>	<b>42</b>



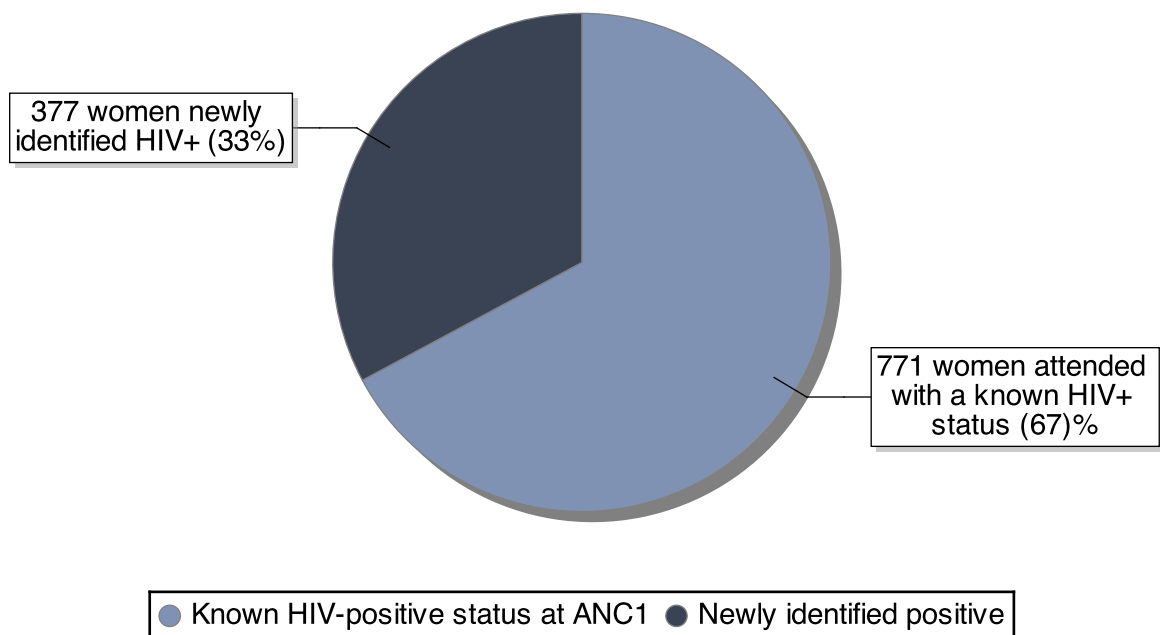
# Ministry of Health Option B+ Weekly Report (3.2)

Week ending 2017-08-13 (2017W32)

ANC trends for the last 18 weeks



Break down of existing vs. newly identified infections



Ratio newly identified / already known status: 0.49

# Ministry of Health Option B+ Weekly Report (3.2)

Week ending 2017-08-13 (2017W32)

## District Service Delivery Focus

### High HIV+ EID Testing

This section shows 20 districts with high proportions of HIV+ 1st PCR EID tests. Please consider both the actual number and the proportion.

District	# EID Tests	# Positive	% Positive
Amudat	3	1	33.33
Bududa	5	1	20.00
Buvuma	13	2	15.38
Abim	7	1	14.29
Amolatar	18	2	11.11
Bulambuli	9	1	11.11
Kaberaido	19	2	10.53
Agago	33	3	9.09
Butaleja	11	1	9.09
Adjumani	11	1	9.09
Alebtong	23	2	8.70
Kanungu	23	2	8.70
Lamwo	25	2	8.00
Serere	38	3	7.89
Lyantonde	38	3	7.89
Yumbe	13	1	7.69
Isingiro	56	4	7.14
Kasese	45	3	6.67
Mityana	78	5	6.41
Kyenjojo	95	6	6.32
Lwengo	48	3	6.25
Mayuge	33	2	6.06
Kabale	53	3	5.66
Dokolo	18	1	5.56
Apac	36	2	5.56

### Low initiation on ART

This section shows 15 districts with low ART initiation rates. Please consider the actual ART need in addition to the proportion.

District	ART Need	# Initiated	% Initiated
Rubirizi	4	0	0
Moroto	1	0	0
Bududa	3	0	0
Bushenyi	1	0	0
Kalangala	1	0	0
Amuria	3	1	0
Kiryandongo	2	0	0
Abim District	1	1	0
Mayuge	8	2	25
Bukedea	3	1	33
Soroti District	3	1	33
Ibanda	3	1	33
Pader District	5	2	40
Kisoro	2	1	50
Bulambuli	2	1	50

## Data Quality challenges by IP

### 'Overtesting'

IPs listed here have 'overtested' – which means that there are issues with data quality. Ensure that facilities have the latest version of the job aide, and that health workers understand that most indicators pertain to ANC1 visits only.

IP	# ANC1 Visits	# Tested	% Tested
HIWA	67	71	113
RTI	123	120	110
UHMG	22	24	109
UPMB	91	95	108
RHSP	183	183	108
IRCU	389	386	103
USAID PHS	543	534	102
STAR-E	1819	1819	102

### 'Overinitiating'

IPs listed here have 'overinitiated' – which means that there are issues with data quality. Ensure that facilities have the latest version of the job aide, and that health workers understand that most indicators pertain to ANC1 visits only.

IP	ART Need	# Initiated	% Initiated
USAID	29	69	238
RHSP	4	5	133
IDI-KCC	26	33	127
IRCU	7	9	121
MJAP	19	22	119
Baylor	21	24	114
USAID PHS	12	12	106

None of the proportions mentioned above should exceed 100%, as all proportions relate to ANC1 visits only. They take both women with a known positive status and women already on ART into consideration. Please see <http://reports.dhis2sms.ug> for further details, including detailed facility data.