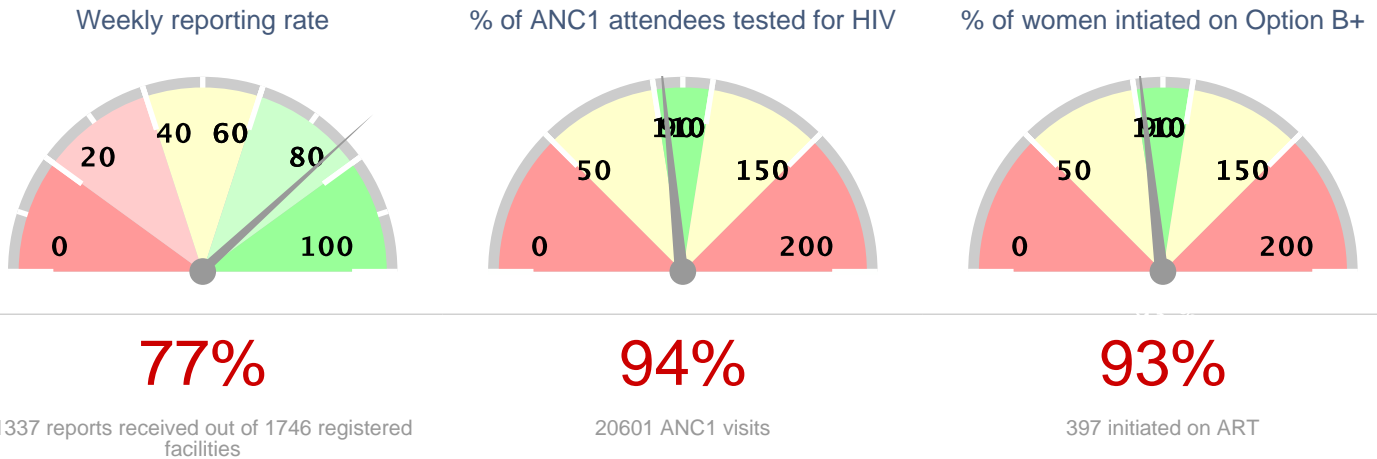


Ministry of Health Option B+ Weekly Report (3.2)

Week ending 2017-08-06 (2017W31)

Summary



Stockouts and missed appointments

Facilities without ARVs	30	2%
Facilities without test kits	109	8%
Number missed appointments	1022	

1st PCR EID testing for August 2015*

Number of EID tests	4936
Number of positive EID tests	169
Proportion testing positive	3.42%

The week in numbers

Number of reports received this week: 1337

Number of facilities registered for B+: 1746

Testing coverage for this week

Number of ANC 1 visits	20601
No. tested for HIV at ANC 1	90% 18579
No. HIV+ women identified at ANC 1	1178
Newly identified thru testing	35% 408
With a known status	65% 770
Proportion newly tested +ve at ANC 1	2.20%
Proportion of +ve women at ANC 1	5.72%

ART coverage for this week

Total HIV + Women at ANC 1	1178
Total already on ART	65% 767
Total to be initiated	66% 781
Total no of women initiated on ART	397
Proportion of women initiated on ART	197%
Proportion with known status already on ART	99.61%

This proportion shows how many women who have a known positive status are already on ART

The data as presented in this report using data from MoH/EOC Weekly Reporting and CPHL. PMTCT service delivery data is weekly data, EID testing data is cumulative monthly. EID number includes data up 2013-09-01. Starting from June 2014, EID data contains only 1st PCR tests.

Ministry of Health Option B+ Weekly Report (3.2)

Week ending 2017-08-06 (2017W31)

Overall performance per IP

Note: IP data does not add up to national totals due to the fact that IPs overlap in districts. EID data is aggregate for all districts in which an IP operates, and not based on individual facilities supported by an IP.

District and weekly rate				For Week ending 2017-08-06 (2017W31)									EID November 2015		Analysis		
Level	No of facilities reporting	No of registered facilities	Proportion of facilities reporting (reporting rate)	a. Total ANC1 visits	b. Total No of mothers tested at 1st ANC visit	c. Total No HIV Tested Positive at 1st ANC visit	d. Total No with known HIV+ status by ANC1	e. Total initiating Option B+ at 1st ANC visit	f. Total no on ART treatment by ANC1	h. Has Test Kits stockout	i. Has ARVs stockout	A. Number of EID tests carried out	B. Proportion of EID tests testing positive for HIV	1. Proportion of ANC1 with unknown status tested	2. Proportion of HIV+ women not yet on ART initiated	3. Proportion of women tested positive out of those tested	
Uganda	1310	1746	75%	20006	18023	398	742	386	740	108	28	4936	3.42%	94%	93%	2.21%	
Baylor	118	119	99%	1573	1500	25	51	32	55	1	1	402	4.48%	99%	158%	1.67%	
CAF	4	6	67%	10	7	0	3	0	3	0	0	1133	3.09%	100%	0%	0%	
CUAMM	57	63	90%	511	471	2	3	2	2	5	1	29	6.9%	93%	67%	0.42%	
HIWA	6	7	86%	54	52	1	2	1	2	1	0	1142	2.63%	100%	100%	1.92%	
IDI-KCC	7	7	100%	1195	1138	37	45	30	45	0	0	734	2.72%	99%	81%	3.25%	
IDI	194	197	98%	3155	2947	64	66	36	68	2	0	330	3.64%	95%	41%	2.17%	
IRCU	14	15	93%	371	365	10	12	11	16	0	0	1457	3.09%	102%	183%	2.74%	
Kalangala	7	15	47%	15	13	1	1	1	1	0	0	32	0%	93%	100%	7.69%	
Mildmay	130	154	84%	2236	1909	72	121	57	116	14	5	775	3.1%	90%	71%	3.77%	
MJAP	20	22	91%	663	512	18	41	20	27	3	0	896	3.12%	82%	76%	3.52%	
MRC-UVRI	0	1	0%									734	2.72%	null%	null%		
PREFA	110	128	86%	1730	1493	68	90	49	85	13	6	567	3.53%	91%	70%	4.55%	
Reach Out	7	7	100%	24	18	2	6	2	6	0	0	1085	3.04%	100%	100%	11.11%	
RHITES-EC	81	121	67%	1471	1192	11	27	60	43	17	4	279	2.15%	83%	0%	0.92%	
RHITES-SW	189	215	88%	2162	1975	33	93	31	91	15	3	648	3.55%	95%	95%	1.67%	
RHSP	35	35	100%	269	237	8	19	8	17	3	0	155	3.23%	95%	100%	3.38%	
RHU	0	1	0%									64	1.56%	null%	null%		
RTI	10	19	53%	93	110	2	10	2	7	1	1	2002	3.05%	133%	50%	1.82%	
STAR-E	115	165	70%	1500	1307	12	19	15	24	15	1	150	2.67%	88%	85%	0.92%	
SUSTAIN	13	13	100%	772	708	17	49	14	49	0	0	877	2.85%	98%	82%	2.4%	
TASO	47	65	72%	691	655	20	40	9	37	2	0	1672	3.11%	101%	39%	3.05%	
TASO Teso	59	93	63%	658	467	7	18	7	17	15	4	170	4.71%	73%	86%	1.5%	
UCMB	15	18	83%	585	557	11	26	11	25	0	0	1907	2.83%	100%	93%	1.97%	
UHMG	6	18	33%	35	35	0	1	0	7	0	0	1232	3.17%	103%	0%	0%	
UPMB	9	13	69%	102	102	6	5	6	5	0	0	1399	3.5%	105%	100%	5.88%	
USAID ASSIST	114	126	90%	1301	1234	23	46	21	53	7	5	569	3.69%	98%	131%	1.86%	
USAID PHS	32	39	82%	469	463	13	14	14	18	1	0	2064	3.29%	102%	171%	2.81%	

Ministry of Health Option B+ Weekly Report (3.2)

Week ending 2017-08-06 (2017W31)

District and weekly rate			For Week ending 2017-08-06 (2017W31)									EID November 2015		Analysis		
Level	No of facilities reporting	No of registered facilities	Proportion of facilities reporting (reporting rate)	a. Total ANC1 visits	b. Total No of mothers tested at 1st ANC visit	c. Total No HIV Tested Positive at 1st ANC visit	d. Total No with known HIV+ status by ANC1	e. Total initiating Option B+ at 1st ANC visit	f. Total no on ART treatment by ANC1	h. Has Test Kits stockout	i. Has ARVs stockout	A. Number of EID tests carried out	B. Proportion of EID tests testing positive for HIV	1. Proportion of ANC1 with unknown status tested	2. Proportion of HIV+ women not yet on ART initiated	3. Proportion of women tested positive out of those tested
Walter Reed	23	64	36%	400	374	12	23	12	17	4	1	39	5.13%	99%	69%	3.21%

EID data provided by CPHL up to 2015-12-10 cumulative for the entire month of November 2015

Overall performance per district

Note:

Ministry of Health Option B+ Weekly Report (3.2)

Week ending 2017-08-06 (2017W31)

District and weekly rate				For Week ending 2017-08-06 (2017W31)									EID November 2015		Analysis		
Level	No of facilities reporting	No of registered facilities	Proportion of facilities reporting (reporting rate)	a. Total ANC1 visits	b. Total No of mothers tested at 1st ANC visit	c. Total No HIV Tested Positive at 1st ANC visit	d. Total No with known HIV+ status by ANC1	e. Total initiating Option B+ at 1st ANC visit	f. Total no on ART treatment by ANC1	h. Has Test Kits stockout	i. Has ARVs stockout	A. Number of EID tests carried out	B. Proportion of EID tests testing positive for HIV	1. Proportion of ANC1 with unknown status tested	2. Proportion of HIV+ women not yet on ART initiated	3. Proportion of women tested positive out of those tested	
Uganda	1310	1746	75%	20006	18023	398	742	386	740	108	28	4936	3.42%	94%	93%	2.21%	
Abim	7	8	88%	38	37	0	3	0	2	0	0	7	14.29%	106%	0%	0%	
Adjumani	12	12	100%	97	96	0	1	0	1	1	0	11	9.09%	100%	0%	0%	
Agago	9	9	100%	80	70	0	6	0	6	2	2	33	9.09%	95%	0%	0%	
Alebong	6	7	86%	101	75	1	3	1	3	1	0	23	8.7%	77%	100%	1.33%	
Amolatar	4	5	80%	60	50	2	1	2	1	1	1	18	11.11%	85%	100%	4%	
Amudat	4	4	100%	45	45	0	0	0	0	0	0	3	33.33%	100%	0%	0%	
Amuria	14	14	100%	182	90	3	3	3	3	5	0	26	0%	50%	100%	3.33%	
Amuru	8	8	100%	62	62	0	0	0	0	1	1	8	0%	100%	0%	0%	
Apac	12	12	100%	192	187	2	5	2	5	0	0	36	5.56%	100%	100%	1.07%	
Arua	39	43	91%	515	496	2	5	3	6	0	0	54	1.85%	97%	-300%	0.4%	
Budaka	10	14	71%	137	119	1	3	0	3	2	0	7	0%	89%	0%	0.84%	
Bududa	5	9	56%	63	51	0	1	0	1	2	0	5	20%	82%	0%	0%	
Bugiri	14	15	93%	243	189	1	4	1	4	2	2	38	2.63%	79%	100%	0.53%	
Buhweju	6	6	100%	39	38	0	1	0	1	0	0	5	0%	100%	0%	0%	
Buikwe	15	32	47%	216	207	6	15	6	11	2	0			103%	62%	2.9%	
Bukedea	4	8	50%	72	62	0	3	0	3	1	0	14	0%	90%	0%	0%	
Bukwo	3	5	60%	33	32	1	0	0	0	0	0			97%	0%	3.12%	
Bulambuli	7	11	64%	69	69	1	1	1	1	1	0	9	11.11%	101%	100%	1.45%	
Buliisa	8	8	100%	87	84	2	2	2	2	0	0	9	0%	99%	0%	2.38%	
Bundibugyo	10	11	91%	197	194	2	5	2	5	0	1	4	0%	101%	100%	1.03%	
Bushenyi	14	18	78%	128	122	2	5	2	5	1	0	64	1.56%	99%	100%	1.64%	
Busia	11	24	46%	219	196	2	4	2	4	1	0	29	0%	91%	100%	1.02%	
Butaleja	11	14	79%	146	146	0	0	0	0	0	0	11	9.09%	100%	0%	0%	
Buvuma	1	10	10%	12	11	0	1	0	1	0	0	13	15.38%	100%	0%	0%	
Buyende	4	9	44%	78	50	1	1	50	14	1	0			65%	-417%	2%	
Dokolo	4	5	80%	49	47	1	2	1	2	0	0	18	5.56%	100%	100%	2.13%	
Gulu	14	14	100%	201	185	5	16	4	13	0	0	115	1.74%	100%	50%	2.7%	
Hoima	25	25	100%	485	461	13	26	12	29	1	0	78	3.85%	100%	90%	2.82%	
Ibanda	10	10	100%	124	120	2	4	2	4	0	0	31	0%	100%	100%	1.67%	
Iganga	12	17	71%	229	140	1	2	1	5	5	0	47	2.13%	62%	-50%	0.71%	
Isingiro	16	26	62%	232	193	1	8	0	5	1	0	56	7.14%	86%	0%	0.52%	

Ministry of Health Option B+ Weekly Report (3.2)

Week ending 2017-08-06 (2017W31)

District and weekly rate				For Week ending 2017-08-06 (2017W31)									EID November 2015		Analysis		
Level	No of facilities reporting	No of registered facilities	Proportion of facilities reporting (reporting rate)	a. Total ANC1 visits	b. Total No of mothers tested at 1st ANC visit	c. Total No HIV Tested Positive at 1st ANC visit	d. Total No with known HIV+ status by ANC1	e. Total initiating Option B+ at 1st ANC visit	f. Total no on ART treatment by ANC1	g. Has Test Kits stockout	h. Has ARVs stockout	A. Number of EID tests carried out	B. Proportion of EID tests testing positive for HIV	1. Proportion of ANC1 with unknown status tested	2. Proportion of HIV+ women not yet on ART initiated	3. Proportion of women tested positive out of those tested	
Jinja	16	24	67%	340	327	22	11	11	10	2	0	83	3.61%	99%	48%	6.73%	
Kaabong	12	13	92%	98	97	0	0	0	0	1	0			99%	0%	0%	
Kabale	25	27	93%	189	176	1	5	1	5	0	1	53	5.66%	96%	100%	0.57%	
Kabarole	30	33	91%	294	262	4	23	10	22	1	0	154	3.25%	97%	200%	1.53%	
Kaberamaido	6	12	50%	61	37	1	1	1	1	4	0	19	10.53%	62%	100%	2.7%	
Kalangala	7	15	47%	15	13	1	1	1	1	0	0	32	0%	93%	100%	7.69%	
Kaliro	4	6	67%	106	105	0	2	0	2	1	0	9	0%	101%	0%	0%	
Kalungu	13	16	81%	91	70	1	9	1	8	2	0	49	0%	85%	100%	1.43%	
Kampala	29	40	72%	2072	1897	56	76	50	60	0	0	734	2.72%	95%	72%	2.95%	
Kamuli	11	17	65%	226	198	2	5	2	5	2	0	29	0%	90%	100%	1.01%	
Kamwenge	15	15	100%	190	183	4	6	4	6	0	0	58	3.45%	99%	100%	2.19%	
Kanungu	16	17	94%	104	99	0	5	0	5	0	0	23	8.7%	100%	0%	0%	
Kapchorwa	6	21	29%	72	66	0	0	1	0	1	0	5	0%	92%	0%	0%	
Kasese	38	40	95%	438	429	3	5	3	5	0	0	45	6.67%	99%	100%	0.7%	
Katakwi	4	12	33%	17	12	0	3	0	3	1	0			86%	0%	0%	
Kayunga	5	11	45%	202	192	4	8	4	7	0	0	26	0%	99%	80%	2.08%	
Kibaale	25	25	100%	696	583	15	21	16	21	0	0	59	5.08%	86%	100%	2.57%	
Kibuku	7	10	70%	72	50	0	0	0	0	2	0	3	0%	69%	0%	0%	
Kiruhura	19	21	90%	191	168	3	9	2	8	4	0	51	3.92%	92%	50%	1.79%	
Kiryandongo	10	10	100%	182	181	0	2	0	2	0	0	24	4.17%	101%	0%	0%	
Kisoro	17	20	85%	232	234	0	3	0	2	1	0	26	0%	102%	0%	0%	
Kitgum	10	12	83%	83	87	0	3	0	3	0	0	59	0%	109%	0%	0%	
Koboko	8	8	100%	132	132	0	0	0	0	0	0	13	0%	100%	0%	0%	
Kole	4	5	80%	89	86	3	5	2	5	0	0	13	0%	102%	67%	3.49%	
Kotido	8	10	80%	71	71	1	0	1	0	0	1	4	0%	100%	100%	1.41%	
Kumi	7	9	78%	89	70	0	1	0	1	1	1	19	5.26%	80%	0%	0%	
Kween	4	5	80%	38	38	0	0	0	0	0	0			100%	0%	0%	
Kyankwanzi	9	12	75%	173	101	5	6	4	6	2	0	16	0%	60%	67%	4.95%	
Kyegegwa	9	9	100%	175	170	6	6	6	6	0	0	41	4.88%	101%	100%	3.53%	
Kyenjojo	18	18	100%	340	314	7	13	8	16	0	0	95	6.32%	96%	300%	2.23%	
Lamwo	7	9	78%	69	64	0	4	0	5	0	0	25	8%	98%	0%	0%	
Lira	14	19	74%	216	214	5	15	4	14	0	0	96	5.21%	106%	67%	2.34%	

Ministry of Health Option B+ Weekly Report (3.2)

Week ending 2017-08-06 (2017W31)

District and weekly rate				For Week ending 2017-08-06 (2017W31)									EID November 2015		Analysis		
Level	No of facilities reporting	No of registered facilities	Proportion of facilities reporting (reporting rate)	a. Total ANC1 visits	b. Total No of mothers tested at 1st ANC visit	c. Total No HIV Tested Positive at 1st ANC visit	d. Total No with known HIV+ status by ANC1	e. Total initiating Option B+ at 1st ANC visit	f. Total no on ART treatment by ANC1	h. Has Test Kits stockout	i. Has ARVs stockout	A. Number of EID tests carried out	B. Proportion of EID tests testing positive for HIV	1. Proportion of ANC1 with unknown status tested	2. Proportion of HIV+ women not yet on ART initiated	3. Proportion of women tested positive out of those tested	
Luuka	4	7	57%	50	42	1	1	1	1	0	0	4	0%	86%	100%	2.38%	
Luweero	30	62	48%	377	376	12	21	11	21	2	2	99	2.02%	106%	91%	3.19%	
Lwengo	8	13	62%	97	90	3	7	2	7	0	1	48	6.25%	100%	67%	3.33%	
Lyantonde	1	2	50%	6	3	1	3	1	3	0	0	38	7.89%	100%	100%	33.33%	
Manafwa	10	15	67%	166	166	1	0	1	0	0	0	8	0%	100%	100%	0.6%	
Maracha	10	10	100%	124	122	1	1	2	1	0	0			99%	200%	0.82%	
Masaka	17	21	81%	218	174	5	26	4	25	3	1	97	3.09%	91%	67%	2.87%	
Masindi	12	13	92%	158	150	3	8	3	8	0	0			100%	100%	2%	
Mayuge	10	14	71%	150	125	4	5	4	5	3	1	33	6.06%	86%	100%	3.2%	
Mbale	26	30	87%	344	266	7	12	11	17	4	0	59	1.69%	80%	83%	2.63%	
Mbarara	21	45	47%	294	244	11	23	12	25	3	1	162	4.94%	90%	143%	4.51%	
Mitooma	7	9	78%	119	108	2	10	1	10	0	0	10	0%	99%	50%	1.85%	
Mityana	26	26	100%	228	210	4	19	3	17	3	1	78	6.41%	100%	50%	1.9%	
Moroto	7	9	78%	77	61	0	1	0	1	2	0	5	0%	80%	0%	0%	
Moyo	12	14	86%	60	58	0	0	0	0	0	0	6	0%	97%	0%	0%	
Mpigi	1	2	50%	20	20	1	0	1	0	0	0	67	2.99%	100%	100%	5%	
Mubende	18	23	78%	487	421	5	35	5	31	1	0	138	0%	93%	62%	1.19%	
Mukono	7	22	32%	97	87	5	10	5	9	2	1			100%	86%	5.75%	
Nakapiripirit	13	14	93%	91	90	0	0	0	0	2	0	4	0%	99%	0%	0%	
Nakaseke	10	15	67%	159	137	2	10	2	10	1	0	33	3.03%	92%	100%	1.46%	
Nakasongola	12	24	50%	123	122	14	5	1	2	0	2	22	4.55%	103%	6%	11.48%	
Namayingo	6	20	30%	47	37	0	0	0	3	1	1	26	3.85%	79%	0%	0%	
Namutumba	6	7	86%	146	130	0	3	0	3	1	0			91%	0%	0%	
Napak	8	8	100%	129	108	1	0	1	0	0	0	6	0%	84%	100%	0.93%	
Nebbi	21	21	100%	352	316	33	9	4	8	0	0	40	2.5%	92%	12%	10.44%	
Ngora	7	8	88%	74	74	1	0	1	0	1	1	12	0%	100%	100%	1.35%	
Ntoroko	4	4	100%	14	7	0	0	0	2	0	0	5	0%	50%	0%	0%	
Ntungamo	17	17	100%	282	259	7	6	7	6	4	2	39	2.56%	94%	100%	2.7%	
Nwoya	7	7	100%	85	83	1	2	1	2	1	0	25	0%	100%	100%	1.2%	
Omor	6	7	86%	43	42	2	1	2	1	0	0			100%	100%	4.76%	
Otuke	6	7	86%	73	70	4	3	4	3	0	0	10	0%	100%	100%	5.71%	
Oyam	7	7	100%	159	153	5	6	5	6	0	0	40	0%	100%	100%	3.27%	

Ministry of Health Option B+ Weekly Report (3.2)

Week ending 2017-08-06 (2017W31)

District and weekly rate				For Week ending 2017-08-06 (2017W31)									EID November 2015		Analysis		
Level	No of facilities reporting	No of registered facilities	Proportion of facilities reporting (reporting rate)	a. Total ANC1 visits	b. Total No of mothers tested at 1st ANC visit	c. Total No HIV Tested Positive at 1st ANC visit	d. Total No with known HIV+ status by ANC1	e. Total initiating Option B+ at 1st ANC visit	f. Total no on ART treatment by ANC1	h. Has Test Kits stockout	i. Has ARVs stockout	A. Number of EID tests carried out	B. Proportion of EID tests testing positive for HIV	1. Proportion of ANC1 with unknown status tested	2. Proportion of HIV+ women not yet on ART initiated	3. Proportion of women tested positive out of those tested	
Pader	11	11	100%	82	78	0	4	0	11	1	1	50	4%	100%	0%	0%	
Pallisa	16	21	76%	182	177	0	3	0	3	1	0	12	0%	99%	0%	0%	
Rakai	35	35	100%	269	237	8	19	8	17	3	0	155	3.23%	95%	100%	3.38%	
Rubirizi	6	8	75%	51	46	0	1	0	2	0	0	16	0%	92%	0%	0%	
Rukungiri	18	19	95%	240	226	4	13	4	13	1	0	61	1.64%	100%	100%	1.77%	
Serere	9	14	64%	99	70	1	5	1	4	1	2	38	7.89%	74%	50%	1.43%	
Sheema	7	9	78%	108	103	3	5	3	5	0	0	51	1.96%	100%	100%	2.91%	
Sironko	14	19	74%	183	146	0	1	0	1	1	1	10	0%	80%	0%	0%	
Soroti	12	21	57%	125	109	2	4	2	7	1	0	42	4.76%	90%	-200%	1.83%	
Tororo	18	25	72%	271	260	1	13	0	11	0	0	59	1.69%	101%	0%	0.38%	
Wakiso	52	103	50%	1184	1007	44	64	41	66	9	0	252	4.37%	90%	103%	4.37%	
Yumbe	13	13	100%	309	305	0	1	0	1	0	0	13	7.69%	99%	0%	0%	
Zombo	10	11	91%	260	258	3	3	3	3	0	0	23	4.35%	100%	100%	1.16%	

EID data provided by CPHL up to 2015-12-10 cumulative for the entire month of November 2015

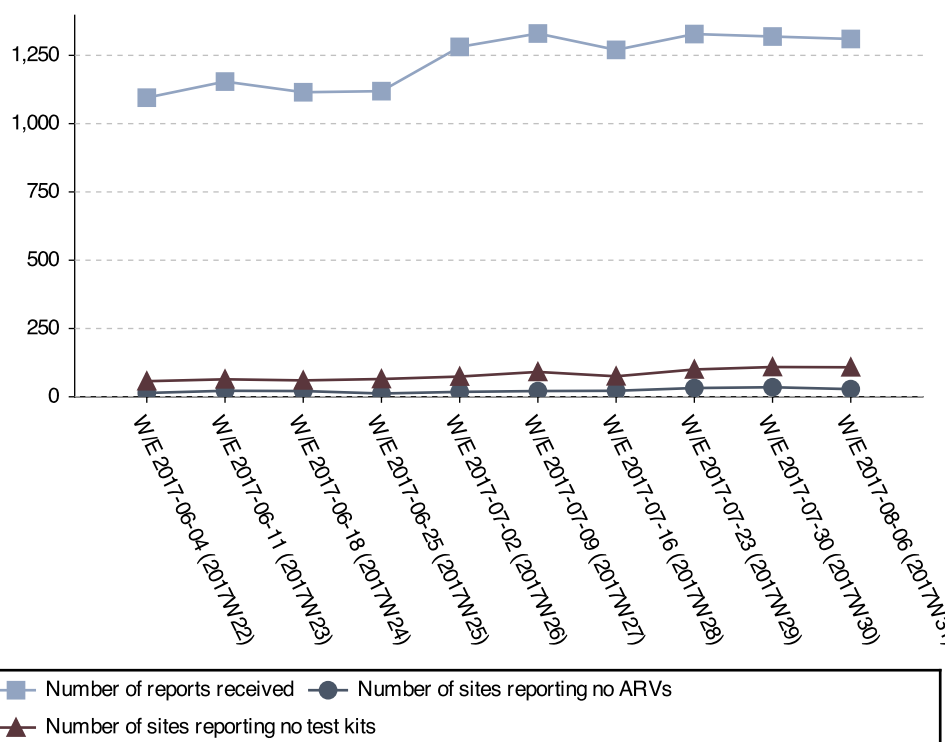
Ministry of Health Option B+ Weekly Report (3.2)

Week ending 2017-08-06 (2017W31)

Stock-outs for the last 6 weeks per facility level

	2017W31		2017W30		2017W29		2017W28		2017W27		2017W26	
	ARVs	HIV Test kits	ARVs	HIV Test kits	ARVs	HIV Test kits	ARVs	HIV Test kits	ARVs	HIV Test kits	ARVs	HIV Test kits
Clinic	2	0	0	0	0	1	0	1	2	1	0	1
General Hospital	1	2	1	5	1	2	0	0	0	4	0	1
HC II	3	27	4	30	5	24	5	17	3	18	4	17
HC III	21	79	27	75	23	68	16	55	14	66	12	58
HC IV	3	12	4	6	4	11	1	4	2	8	2	4
NR Hospital	0	0	0	0	0	0	0	0	0	0	0	0
Other/unknown	0	0	0	2	0	1	0	1	0	0	0	0
RR Hospital	0	0	0	1	0	0	0	0	0	0	0	0
Total	30	120	36	119	33	107	22	78	21	97	18	81

Stock-out trends for the last 10 weeks



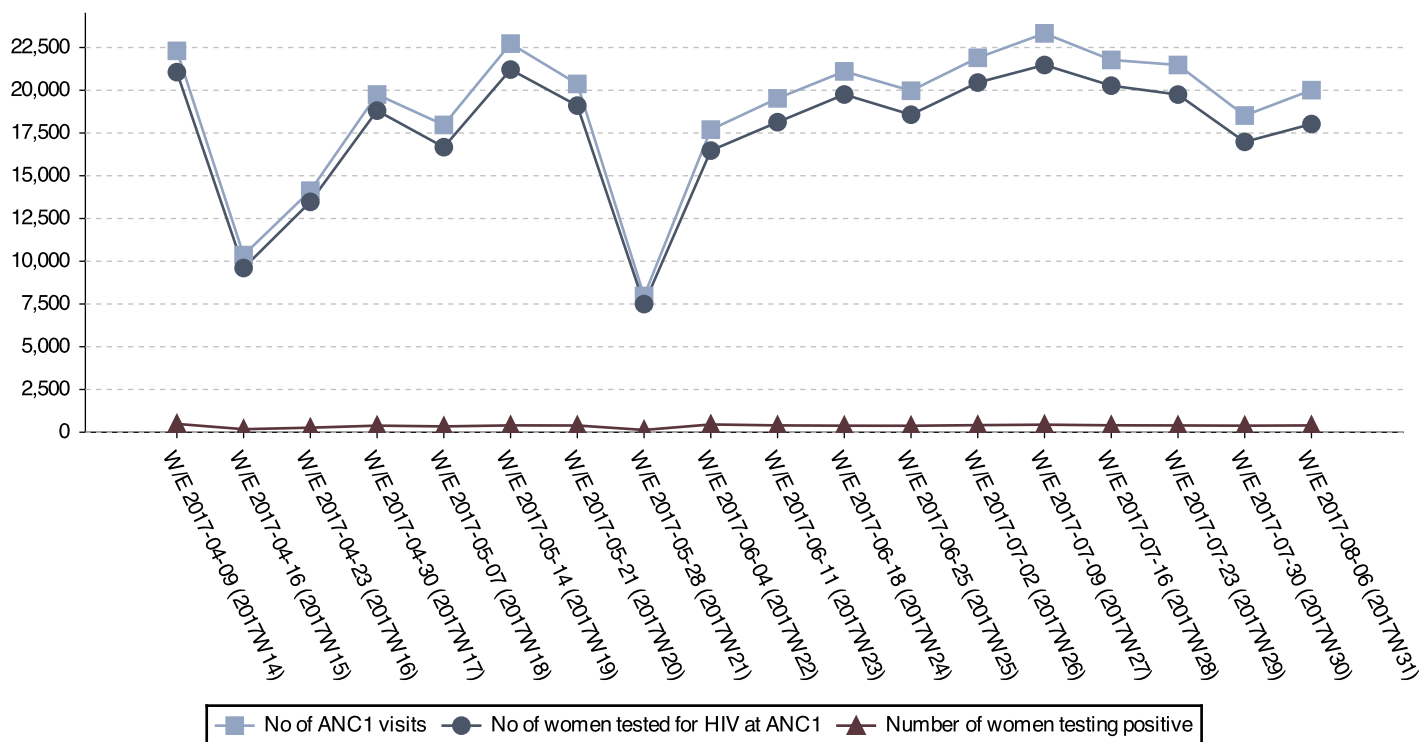
Current stock-outs per IP

IP	Test kit stockout	ARV stockout
RHITES-EC	17	4
RHITES-SW	15	3
TASO Teso	15	4
STAR-E	15	1
Mildmay	14	5
PREFA	13	6
USAID ASSIST	7	5
CUAMM	5	1
Walter Reed	4	1
MJAP	3	0
RHSP	3	0
IDI	2	0
TASO	2	0
RTI	1	1
HIWA	1	0
USAID PHS	1	0
Baylor	1	1
Total	119	32

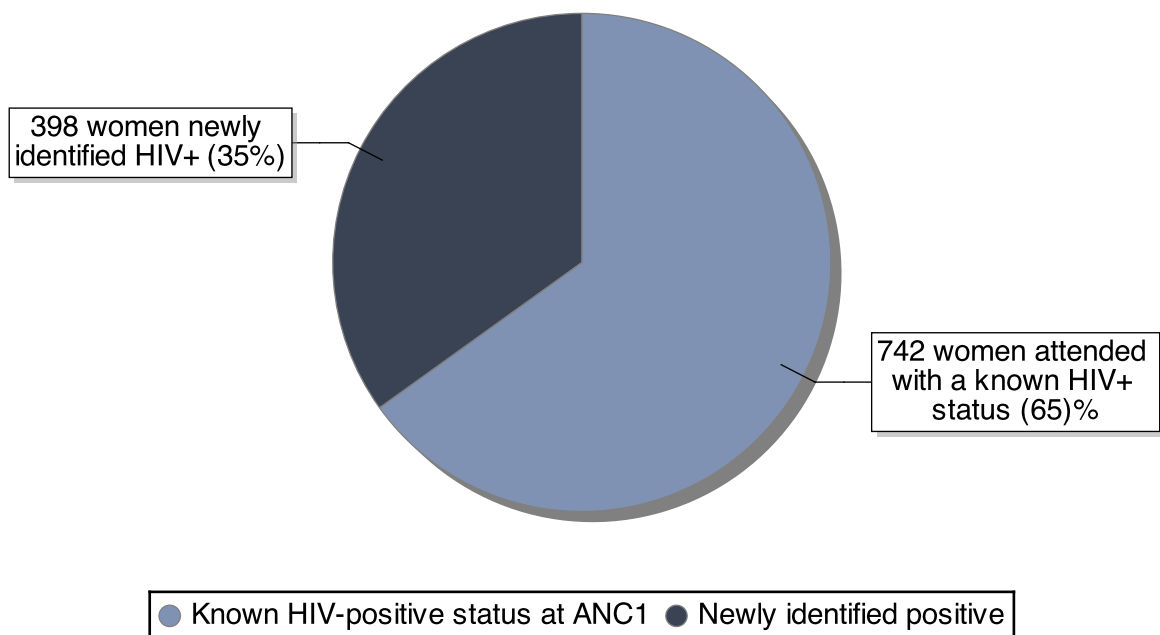
Ministry of Health Option B+ Weekly Report (3.2)

Week ending 2017-08-06 (2017W31)

ANC trends for the last 18 weeks



Break down of existing vs. newly identified infections



Ratio newly identified / already known status: 0.54

Ministry of Health Option B+ Weekly Report (3.2)

Week ending 2017-08-06 (2017W31)

District Service Delivery Focus

High HIV+ EID Testing

This section shows 20 districts with high proportions of HIV+ 1st PCR EID tests. Please consider both the actual number and the proportion.

District	# EID Tests	# Positive	% Positive
Amudat	3	1	33.33
Bududa	5	1	20.00
Buvuma	13	2	15.38
Abim	7	1	14.29
Amolatar	18	2	11.11
Bulambuli	9	1	11.11
Kaberaido	19	2	10.53
Agago	33	3	9.09
Butaleja	11	1	9.09
Adjumani	11	1	9.09
Alebtong	23	2	8.70
Kanungu	23	2	8.70
Lamwo	25	2	8.00
Serere	38	3	7.89
Lyantonde	38	3	7.89
Yumbe	13	1	7.69
Isingiro	56	4	7.14
Kasese	45	3	6.67
Mityana	78	5	6.41
Kyenjojo	95	6	6.32
Lwengo	48	3	6.25
Mayuge	33	2	6.06
Kabale	53	3	5.66
Dokolo	18	1	5.56
Apac	36	2	5.56

Low initiation on ART

This section shows 15 districts with low ART initiation rates. Please consider the actual ART need in addition to the proportion.

District	ART Need	# Initiated	% Initiated
Arua District	1	3	300-
Budaka	1	0	0
Abim District	1	0	0
Bukwo	1	0	0
Buliisa	2	2	0
Isingiro	4	0	0
Kisoro	1	0	0
Tororo	3	0	0
Nakasongola	17	1	6
Nebbi District	34	4	12
Jinja District	23	11	48
Serere	2	1	50
Mitooma	2	1	50
Mityana	6	3	50
Kiruhura	4	2	50

Data Quality challenges by IP

'Overtesting'

IPs listed here have 'overtested' – which means that there are issues with data quality. Ensure that facilities have the latest version of the job aide, and that health workers understand that most indicators pertain to ANC1 visits only.

IP	# ANC1 Visits	# Tested	% Tested
RTI	93	110	133
UPMB	102	102	105
UHMG	35	35	103
IRCU	371	365	102
USAID PHS	469	463	102
TASO	691	655	101

'Overinitiating'

IPs listed here have 'overinitiated' – which means that there are issues with data quality. Ensure that facilities have the latest version of the job aide, and that health workers understand that most indicators pertain to ANC1 visits only.

IP	ART Need	# Initiated	% Initiated
IRCU	6	11	183
USAID PHS	9	14	171
Baylor	21	32	158
USAID	16	21	131

None of the proportions mentioned above should exceed 100%, as all proportions relate to ANC1 visits only. They take both women with a known positive status and women already on ART into consideration. Please see <http://reports.dhis2sms.ug> for further details, including detailed facility data.