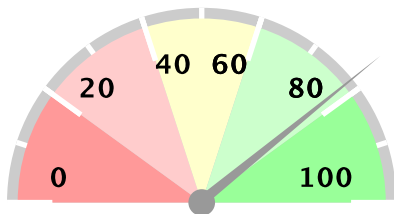


# Ministry of Health Option B+ Weekly Report (3.2)

Week ending 2017-07-30 (2017W30)

## Summary

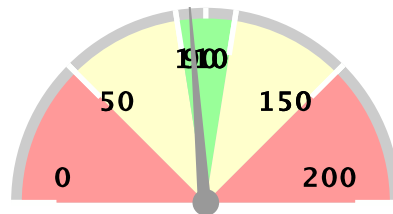
Weekly reporting rate



**78%**

1368 reports received out of 1746 registered facilities

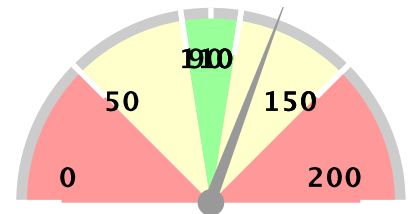
% of ANC1 attendees tested for HIV



**95%**

19817 ANC1 visits

% of women initiated on Option B+



**123%**

530 initiated on ART

### Stockouts and missed appointments

Facilities without ARVs	36	3%
Facilities without test kits	112	8%
Number missed appointments	976	

### 1st PCR EID testing for August 2015\*

Number of EID tests	4936
Number of positive EID tests	169
Proportion testing positive	3.42%

### The week in numbers

Number of reports received this week 1368

Number of facilities registered for B+ 1746

### Testing coverage for this week

Number of ANC 1 visits	19817
No. tested for HIV at ANC 1	91% 18121
No. HIV+ women identified at ANC 1	1202
Newly identified thru testing	35% 416
With a known status	65% 786
Proportion newly tested +ve at ANC 1	2.30%
Proportion of +ve women at ANC 1	6.07%

### ART coverage for this week

Total HIV + Women at ANC 1	1202
Total already on ART	64% 768
Total to be initiated	56% 672
Total no of women initiated on ART	530
Proportion of women initiated on ART	127%
Proportion with known status already on ART	97.71%

This proportion shows how many women who have a known positive status are already on ART

The data as presented in this report using data from MoH/EOC Weekly Reporting and CPHL. PMTCT service delivery data is weekly data, EID testing data is cumulative monthly. EID number includes data up 2013-09-01. Starting from June 2014, EID data contains only 1st PCR tests.

# Ministry of Health Option B+ Weekly Report (3.2)

Week ending 2017-07-30 (2017W30)

## Overall performance per IP

Note: IP data does not add up to national totals due to the fact that IPs overlap in districts. EID data is aggregate for all districts in which an IP operates, and not based on individual facilities supported by an IP.

District and weekly rate				For Week ending 2017-07-30 (2017W30)									EID November 2015		Analysis		
Level	No of facilities reporting	No of registered facilities	Proportion of facilities reporting (reporting rate)	a. Total ANC1 visits	b. Total No of mothers tested at 1st ANC visit	c. Total No HIV Tested Positive at 1st ANC visit	d. Total No with known HIV+ status by ANC1	e. Total initiating Option B+ at 1st ANC visit	f. Total no on ART treatment by ANC1	h. Has Test Kits stockout	i. Has ARVs stockout	A. Number of EID tests carried out	B. Proportion of EID tests testing positive for HIV	1. Proportion of ANC1 with unknown status tested	2. Proportion of HIV+ women not yet on ART initiated	3. Proportion of women tested positive out of those tested	
Uganda	1319	1746	76%	18522	16981	383	708	472	692	109	35	4936	3.42%	95%	119%	2.26%	
Baylor	117	119	98%	1482	1381	25	69	31	58	5	3	402	4.48%	98%	85%	1.81%	
CAF	3	6	50%	16	10	0	5	0	5	0	0	1133	3.09%	91%	0%	0%	
CUAMM	59	63	94%	613	586	1	2	0	3	3	3	29	6.9%	96%	0%	0.17%	
HIWA	6	7	86%	39	36	2	3	2	3	1	0	1142	2.63%	100%	0%	5.56%	
IDI-KCC	7	7	100%	1081	1018	49	62	42	62	0	0	734	2.72%	100%	86%	4.81%	
IDI	196	197	99%	3025	2934	37	52	29	50	1	1	330	3.64%	99%	77%	1.26%	
IRCU	14	15	93%	331	314	5	16	5	16	1	2	1457	3.09%	100%	100%	1.59%	
Kalangala	14	15	93%	49	43	3	6	3	6	0	0	32	0%	100%	100%	6.98%	
Mildmay	117	154	76%	1942	1729	74	86	79	90	10	3	775	3.1%	93%	107%	4.28%	
MJAP	17	22	77%	244	204	6	26	6	26	2	0	896	3.12%	94%	100%	2.94%	
MRC-UVRI	0	1	0%									734	2.72%	null%	null%		
PREFA	104	128	81%	1620	1426	60	72	54	70	9	6	567	3.53%	92%	92%	4.21%	
Reach Out	6	7	86%	12	9	0	3	0	3	0	0	1085	3.04%	100%	0%	0%	
RHITES-EC	79	121	65%	1263	1136	25	28	16	21	13	2	279	2.15%	92%	59%	2.2%	
RHITES-SW	191	215	89%	2117	1831	47	99	149	109	23	3	648	3.55%	91%	360%	2.57%	
RHSP	35	35	100%	239	202	9	26	9	25	1	0	155	3.23%	95%	90%	4.46%	
RHU	0	1	0%									64	1.56%	null%	null%		
RTI	14	19	74%	92	99	4	9	4	9	4	1	2002	3.05%	119%	100%	4.04%	
STAR-E	116	165	70%	1433	1286	5	21	7	13	19	4	150	2.67%	91%	54%	0.39%	
SUSTAIN	13	13	100%	661	608	10	40	14	38	1	0	877	2.85%	98%	117%	1.64%	
TASO	51	65	78%	604	578	6	26	6	27	2	0	1672	3.11%	100%	120%	1.04%	
TASO Teso	58	93	62%	670	579	2	19	2	17	12	5	170	4.71%	89%	50%	0.35%	
UCMB	15	18	83%	570	542	14	24	15	24	0	0	1907	2.83%	99%	107%	2.58%	
UHMG	6	18	33%	26	29	0	1	0	1	0	0	1232	3.17%	116%	0%	0%	
UPMB	9	13	69%	114	115	3	3	3	3	0	0	1399	3.5%	104%	100%	2.61%	
USAID ASSIST	103	126	82%	1110	1048	31	59	29	58	4	3	569	3.69%	100%	91%	2.96%	
USAID PHS	33	39	85%	418	397	11	22	11	26	1	2	2064	3.29%	100%	107%	2.77%	

# Ministry of Health Option B+ Weekly Report (3.2)

Week ending 2017-07-30 (2017W30)

District and weekly rate				For Week ending 2017-07-30 (2017W30)									EID November 2015		Analysis		
Level	No of facilities reporting	No of registered facilities	Proportion of facilities reporting (reporting rate)	a. Total ANC1 visits	b. Total No of mothers tested at 1st ANC visit	c. Total No HIV Tested Positive at 1st ANC visit	d. Total No with known HIV+ status by ANC1	e. Total initiating Option B+ at 1st ANC visit	f. Total no on ART treatment by ANC1	h. Has Test Kits stockout	i. Has ARVs stockout	A. Number of EID tests carried out	B. Proportion of EID tests testing positive for HIV	1. Proportion of ANC1 with unknown status tested	2. Proportion of HIV+ women not yet on ART initiated	3. Proportion of women tested positive out of those tested	
Walter Reed	39	64	61%	580	530	13	18	12	17	3	1	39	5.13%	94%	86%	2.45%	

EID data provided by CPHL up to 2015-12-10 cumulative for the entire month of November 2015

## Overall performance per district

Note:

# Ministry of Health Option B+ Weekly Report (3.2)

Week ending 2017-07-30 (2017W30)

District and weekly rate				For Week ending 2017-07-30 (2017W30)									EID November 2015		Analysis		
Level	No of facilities reporting	No of registered facilities	Proportion of facilities reporting (reporting rate)	a. Total ANC1 visits	b. Total No of mothers tested at 1st ANC visit	c. Total No HIV Tested Positive at 1st ANC visit	d. Total No with known HIV+ status by ANC1	e. Total initiating Option B+ at 1st ANC visit	f. Total no on ART treatment by ANC1	h. Has Test Kits stockout	i. Has ARVs stockout	A. Number of EID tests carried out	B. Proportion of EID tests testing positive for HIV	1. Proportion of ANC1 with unknown status tested	2. Proportion of HIV+ women not yet on ART initiated	3. Proportion of women tested positive out of those tested	
Uganda	1319	1746	76%	18522	16981	383	708	472	692	109	35	4936	3.42%	95%	119%	2.26%	
Abim	8	8	100%	38	38	0	0	0	0	0	0	7	14.29%	100%	0%	0%	
Adjumani	12	12	100%	125	125	0	0	0	0	0	0	11	9.09%	100%	0%	0%	
Agago	6	9	67%	67	65	2	2	3	3	1	1	33	9.09%	100%	300%	3.08%	
Alebong	6	7	86%	76	54	2	1	2	0	1	0	23	8.7%	72%	67%	3.7%	
Amolatar	3	5	60%	41	27	1	5	1	5	1	1	18	11.11%	75%	100%	3.7%	
Amudat	4	4	100%	73	73	0	0	0	0	0	0	3	33.33%	100%	0%	0%	
Amuria	14	14	100%	182	151	0	3	0	3	3	0	26	0%	84%	0%	0%	
Amuru	5	8	62%	36	33	0	3	0	3	1	0	8	0%	100%	0%	0%	
Apac	12	12	100%	129	121	5	1	4	1	0	0	36	5.56%	95%	80%	4.13%	
Arua	39	43	91%	536	535	2	2	1	2	0	1	54	1.85%	100%	50%	0.37%	
Budaka	10	14	71%	145	134	0	1	0	0	0	0	7	0%	93%	0%	0%	
Bududa	5	9	56%	64	47	0	0	0	0	2	0	5	20%	73%	0%	0%	
Bugiri	12	15	80%	159	151	9	1	1	1	2	1	38	2.63%	96%	100%	5.96%	
Buhweju	6	6	100%	39	38	1	1	1	1	0	0	5	0%	100%	100%	2.63%	
Buikwe	23	32	72%	289	268	3	17	4	17	1	0			99%	133%	1.12%	
Bukedea	4	8	50%	59	51	0	1	0	1	1	0	14	0%	88%	0%	0%	
Bukwo	3	5	60%	23	13	0	1	0	1	1	0			59%	0%	0%	
Bulambuli	8	11	73%	66	66	2	0	1	0	0	0	9	11.11%	100%	50%	3.03%	
Buliisa	8	8	100%	104	102	1	2	1	2	0	0	9	0%	100%	100%	0.98%	
Bundibugyo	10	11	91%	156	144	1	3	1	2	2	2	4	0%	94%	50%	0.69%	
Bushenyi	12	18	67%	111	98	0	12	0	12	1	0	64	1.56%	99%	0%	0%	
Busia	11	24	46%	180	167	1	4	0	2	1	0	29	0%	95%	0%	0.6%	
Butaleja	11	14	79%	175	175	0	0	0	0	1	0	11	9.09%	100%	0%	0%	
Buvuma	3	10	30%	15	14	1	1	1	1	0	0	13	15.38%	100%	100%	7.14%	
Buyende	4	9	44%	71	68	2	2	2	2	1	0			99%	100%	2.94%	
Dokolo	5	5	100%	43	31	0	4	0	4	0	0	18	5.56%	79%	0%	0%	
Gulu	10	14	71%	160	147	6	12	9	13	0	0	115	1.74%	99%	200%	4.08%	
Hoima	25	25	100%	454	430	9	13	7	12	0	0	78	3.85%	98%	83%	2.09%	
Ibanda	9	10	90%	130	120	7	8	7	8	0	0	31	0%	98%	100%	5.83%	
Iganga	11	17	65%	187	160	5	1	5	1	2	2	47	2.13%	86%	100%	3.12%	
Isingiro	22	26	85%	252	229	3	8	3	8	1	0	56	7.14%	94%	100%	1.31%	

# Ministry of Health Option B+ Weekly Report (3.2)

Week ending 2017-07-30 (2017W30)

District and weekly rate				For Week ending 2017-07-30 (2017W30)									EID November 2015		Analysis		
Level	No of facilities reporting	No of registered facilities	Proportion of facilities reporting (reporting rate)	a. Total ANC1 visits	b. Total No of mothers tested at 1st ANC visit	c. Total No HIV Tested Positive at 1st ANC visit	d. Total No with known HIV+ status by ANC1	e. Total initiating Option B+ at 1st ANC visit	f. Total no on ART treatment by ANC1	g. Has Test Kits stockout	h. Has ARVs stockout	A. Number of EID tests carried out	B. Proportion of EID tests testing positive for HIV	1. Proportion of ANC1 with unknown status tested	2. Proportion of HIV+ women not yet on ART initiated	3. Proportion of women tested positive out of those tested	
Jinja	19	24	79%	341	328	4	8	5	8	0	0	83	3.61%	98%	125%	1.22%	
Kaabong	11	13	85%	88	88	0	0	0	0	0	0			100%	0%	0%	
Kabale	27	27	100%	209	196	2	9	0	7	1	1	53	5.66%	98%	0%	1.02%	
Kabarole	31	33	94%	303	262	7	27	12	27	2	1	154	3.25%	95%	171%	2.67%	
Kaberamaido	7	12	58%	92	75	0	6	0	6	4	1	19	10.53%	87%	0%	0%	
Kalangala	14	15	93%	49	43	3	6	3	6	0	0	32	0%	100%	100%	6.98%	
Kaliro	5	6	83%	87	86	2	1	2	1	1	0	9	0%	100%	100%	2.33%	
Kalungu	14	16	88%	110	93	5	8	4	7	1	0	49	0%	91%	67%	5.38%	
Kampala	28	40	70%	1549	1462	59	85	52	88	1	0	734	2.72%	100%	88%	4.04%	
Kamuli	10	17	59%	214	183	5	3	5	2	2	0	29	0%	87%	83%	2.73%	
Kamwenge	15	15	100%	187	178	2	9	2	7	0	0	58	3.45%	100%	50%	1.12%	
Kanungu	16	17	94%	112	110	2	4	40	12	0	0	23	8.7%	102%	-667%	1.82%	
Kapchorwa	6	21	29%	65	60	0	1	3	3	1	0	5	0%	94%	-150%	0%	
Kasese	38	40	95%	436	420	2	6	3	6	1	0	45	6.67%	98%	150%	0.48%	
Katakwi	3	12	25%	25	16	0	2	0	2	1	0			70%	0%	0%	
Kayunga	4	11	36%	164	158	1	5	1	4	0	0	26	0%	99%	50%	0.63%	
Kibaale	25	25	100%	553	533	10	22	8	22	0	0	59	5.08%	100%	83%	1.88%	
Kibuku	9	10	90%	111	106	0	4	0	0	4	0	3	0%	99%	0%	0%	
Kiruhura	17	21	81%	262	239	6	7	5	7	4	0	51	3.92%	94%	83%	2.51%	
Kiryandongo	10	10	100%	181	176	4	6	3	6	0	0	24	4.17%	101%	67%	2.27%	
Kisoro	17	20	85%	219	213	1	2	1	4	2	0	26	0%	98%	-100%	0.47%	
Kitgum	8	12	67%	57	60	3	2	3	2	0	0	59	0%	109%	100%	5%	
Koboko	8	8	100%	122	122	0	1	0	1	0	0	13	0%	101%	0%	0%	
Kole	5	5	100%	116	104	1	2	0	2	0	0	13	0%	91%	0%	0.96%	
Kotido	10	10	100%	93	93	0	0	0	1	0	1	4	0%	100%	0%	0%	
Kumi	8	9	89%	120	113	2	1	2	0	2	2	19	5.26%	95%	67%	1.77%	
Kween	5	5	100%	33	33	0	0	0	0	0	0			100%	0%	0%	
Kyankwanzi	6	12	50%	89	74	2	2	2	3	3	0	16	0%	85%	100%	2.7%	
Kyegegwa	9	9	100%	181	175	4	7	4	7	0	0	41	4.88%	101%	100%	2.29%	
Kyenjojo	18	18	100%	296	270	9	23	10	15	0	0	95	6.32%	99%	56%	3.33%	
Lamwo	6	9	67%	37	32	1	5	1	3	0	0	25	8%	100%	33%	3.12%	
Lira	13	19	68%	184	193	7	13	7	13	0	1	96	5.21%	113%	100%	3.63%	

# Ministry of Health Option B+ Weekly Report (3.2)

Week ending 2017-07-30 (2017W30)

District and weekly rate				For Week ending 2017-07-30 (2017W30)									EID November 2015		Analysis		
Level	No of facilities reporting	No of registered facilities	Proportion of facilities reporting (reporting rate)	a. Total ANC1 visits	b. Total No of mothers tested at 1st ANC visit	c. Total No HIV Tested Positive at 1st ANC visit	d. Total No with known HIV+ status by ANC1	e. Total initiating Option B+ at 1st ANC visit	f. Total no on ART treatment by ANC1	h. Has Test Kits stockout	i. Has ARVs stockout	A. Number of EID tests carried out	B. Proportion of EID tests testing positive for HIV	1. Proportion of ANC1 with unknown status tested	2. Proportion of HIV+ women not yet on ART initiated	3. Proportion of women tested positive out of those tested	
Luuka	4	7	57%	69	65	0	2	0	2	0	0	4	0%	97%	0%	0%	
Luweero	25	62	40%	303	289	9	22	8	21	1	0	99	2.02%	103%	82%	3.11%	
Lwengo	12	13	92%	173	121	2	9	2	9	1	1	48	6.25%	74%	100%	1.65%	
Lyantonde	1	2	50%	1	0	0	1	0	1	0	0	38	7.89%	0%	0%	N/A	
Manafwa	10	15	67%	118	118	1	0	1	0	0	0	8	0%	100%	100%	0.85%	
Maracha	10	10	100%	134	134	0	0	0	0	0	0			100%	0%	0%	
Masaka	17	21	81%	203	161	7	20	7	19	4	2	97	3.09%	88%	86%	4.35%	
Masindi	12	13	92%	111	103	2	2	2	3	0	0			94%	200%	1.94%	
Mayuge	11	14	79%	173	174	1	10	1	6	2	1	33	6.06%	107%	20%	0.57%	
Mbale	25	30	83%	254	179	2	6	3	3	5	2	59	1.69%	72%	150%	1.12%	
Mbarara	19	45	42%	251	210	6	27	6	27	2	0	162	4.94%	94%	100%	2.86%	
Mitooma	7	9	78%	96	95	2	2	2	2	0	0	10	0%	101%	100%	2.11%	
Mityana	24	26	92%	242	229	6	14	6	16	1	1	78	6.41%	100%	120%	2.62%	
Moroto	7	9	78%	112	98	0	0	0	0	1	0	5	0%	88%	0%	0%	
Moyo	14	14	100%	60	43	0	3	0	2	0	0	6	0%	75%	0%	0%	
Mpigi	1	2	50%	28	25	2	3	2	3	0	0	67	2.99%	100%	100%	8%	
Mubende	18	23	78%	372	281	13	20	9	19	4	1	138	0%	80%	75%	4.63%	
Mukono	16	22	73%	263	217	10	11	10	11	2	1			86%	100%	4.61%	
Nakapiripirit	13	14	93%	158	146	1	1	0	1	2	2	4	0%	93%	0%	0.68%	
Nakaseke	11	15	73%	148	138	6	7	17	8	2	0	33	3.03%	98%	340%	4.35%	
Nakasongola	11	24	46%	110	109	5	5	3	4	0	2	22	4.55%	104%	50%	4.59%	
Namayingo	6	20	30%	45	43	1	0	1	0	2	0	26	3.85%	96%	100%	2.33%	
Namutumba	6	7	86%	96	57	0	2	0	2	1	0			61%	0%	0%	
Napak	8	8	100%	93	92	0	1	0	1	0	0	6	0%	100%	0%	0%	
Nebbi	21	21	100%	429	425	8	5	7	5	1	0	40	2.5%	100%	88%	1.88%	
Ngora	6	8	75%	57	53	0	2	0	2	0	0	12	0%	96%	0%	0%	
Ntoroko	4	4	100%	42	40	1	2	0	2	0	0	5	0%	100%	0%	2.5%	
Ntungamo	17	17	100%	294	160	5	6	4	6	10	2	39	2.56%	56%	80%	3.12%	
Nwoya	6	7	86%	64	62	3	2	3	4	0	0	25	0%	100%	300%	4.84%	
Omor	6	7	86%	60	85	3	4	3	4	0	0			152%	100%	3.53%	
Otuke	7	7	100%	62	59	4	3	4	3	0	0	10	0%	100%	100%	6.78%	
Oyam	6	7	86%	124	120	0	4	0	4	0	0	40	0%	100%	0%	0%	

# Ministry of Health Option B+ Weekly Report (3.2)

Week ending 2017-07-30 (2017W30)

District and weekly rate				For Week ending 2017-07-30 (2017W30)									EID November 2015		Analysis		
Level	No of facilities reporting	No of registered facilities	Proportion of facilities reporting (reporting rate)	a. Total ANC1 visits	b. Total No of mothers tested at 1st ANC visit	c. Total No HIV Tested Positive at 1st ANC visit	d. Total No with known HIV+ status by ANC1	e. Total initiating Option B+ at 1st ANC visit	f. Total no on ART treatment by ANC1	h. Has Test Kits stockout	i. Has ARVs stockout	A. Number of EID tests carried out	B. Proportion of EID tests testing positive for HIV	1. Proportion of ANC1 with unknown status tested	2. Proportion of HIV+ women not yet on ART initiated	3. Proportion of women tested positive out of those tested	
Pader	11	11	100%	102	86	1	16	1	16	0	0	50	4%	100%	100%	1.16%	
Pallisa	16	21	76%	180	179	0	0	0	0	3	1	12	0%	99%	0%	0%	
Rakai	35	35	100%	239	202	9	26	9	25	1	0	155	3.23%	95%	90%	4.46%	
Rubirizi	6	8	75%	31	24	0	2	1	2	1	0	16	0%	83%	0%	0%	
Rukungiri	16	19	84%	125	105	5	7	6	8	0	0	61	1.64%	89%	150%	4.76%	
Serere	9	14	64%	99	97	0	2	0	2	1	2	38	7.89%	100%	0%	0%	
Sheema	9	9	100%	75	75	8	11	73	10	1	0	51	1.96%	117%	811%	10.67%	
Sironko	12	19	63%	181	171	0	5	0	5	1	1	10	0%	97%	0%	0%	
Soroti	10	21	48%	88	69	1	8	1	7	0	0	42	4.76%	86%	50%	1.45%	
Tororo	19	25	76%	260	253	2	8	1	7	2	0	59	1.69%	100%	33%	0.79%	
Wakiso	49	103	48%	1048	954	45	38	43	40	5	1	252	4.37%	94%	105%	4.72%	
Yumbe	13	13	100%	269	269	2	0	1	0	0	0	13	7.69%	100%	50%	0.74%	
Zombo	10	11	91%	210	197	3	3	3	3	0	0	23	4.35%	95%	100%	1.52%	

EID data provided by CPHL up to 2015-12-10 cumulative for the entire month of November 2015

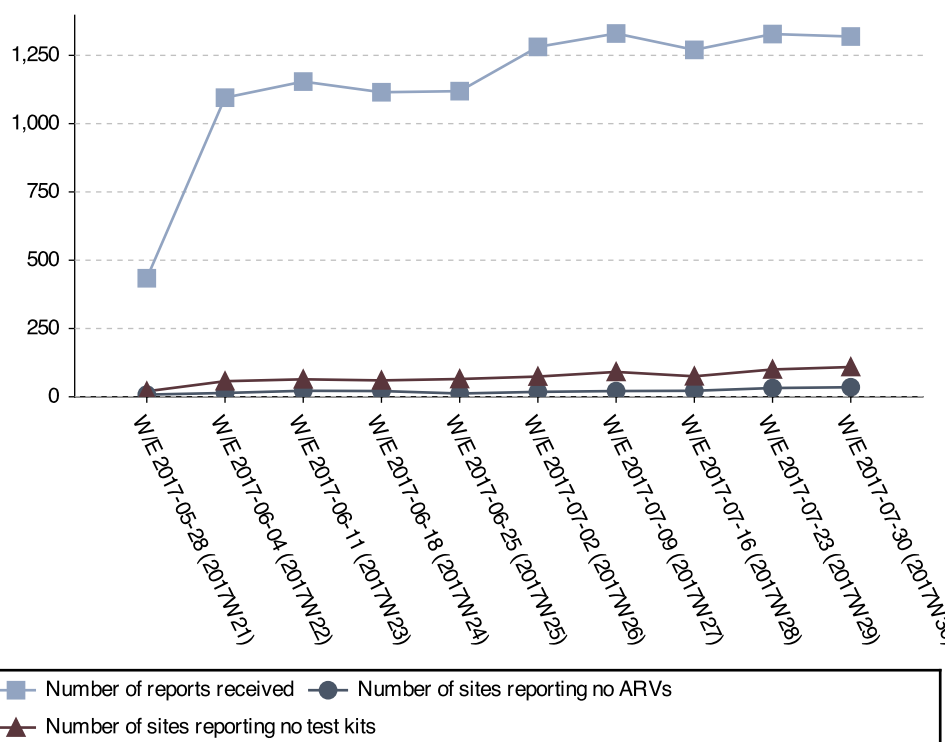
# Ministry of Health Option B+ Weekly Report (3.2)

Week ending 2017-07-30 (2017W30)

## Stock-outs for the last 6 weeks per facility level

	2017W30		2017W29		2017W28		2017W27		2017W26		2017W25	
	ARVs	HIV Test kits	ARVs	HIV Test kits	ARVs	HIV Test kits	ARVs	HIV Test kits	ARVs	HIV Test kits	ARVs	HIV Test kits
Clinic	0	0	0	1	0	1	2	1	0	1	0	1
General Hospital	1	5	1	2	0	0	0	4	0	1	0	1
HC II	4	30	5	24	5	17	3	18	4	17	2	17
HC III	27	75	23	68	16	55	14	66	12	58	10	45
HC IV	4	6	4	11	1	4	2	8	2	4	1	6
NR Hospital	0	0	0	0	0	0	0	0	0	0	0	0
Other/unknown	0	2	0	1	0	1	0	0	0	0	0	0
RR Hospital	0	1	0	0	0	0	0	0	0	0	0	0
<b>Total</b>	<b>36</b>	<b>119</b>	<b>33</b>	<b>107</b>	<b>22</b>	<b>78</b>	<b>21</b>	<b>97</b>	<b>18</b>	<b>81</b>	<b>13</b>	<b>70</b>

## Stock-out trends for the last 10 weeks



## Current stock-outs per IP

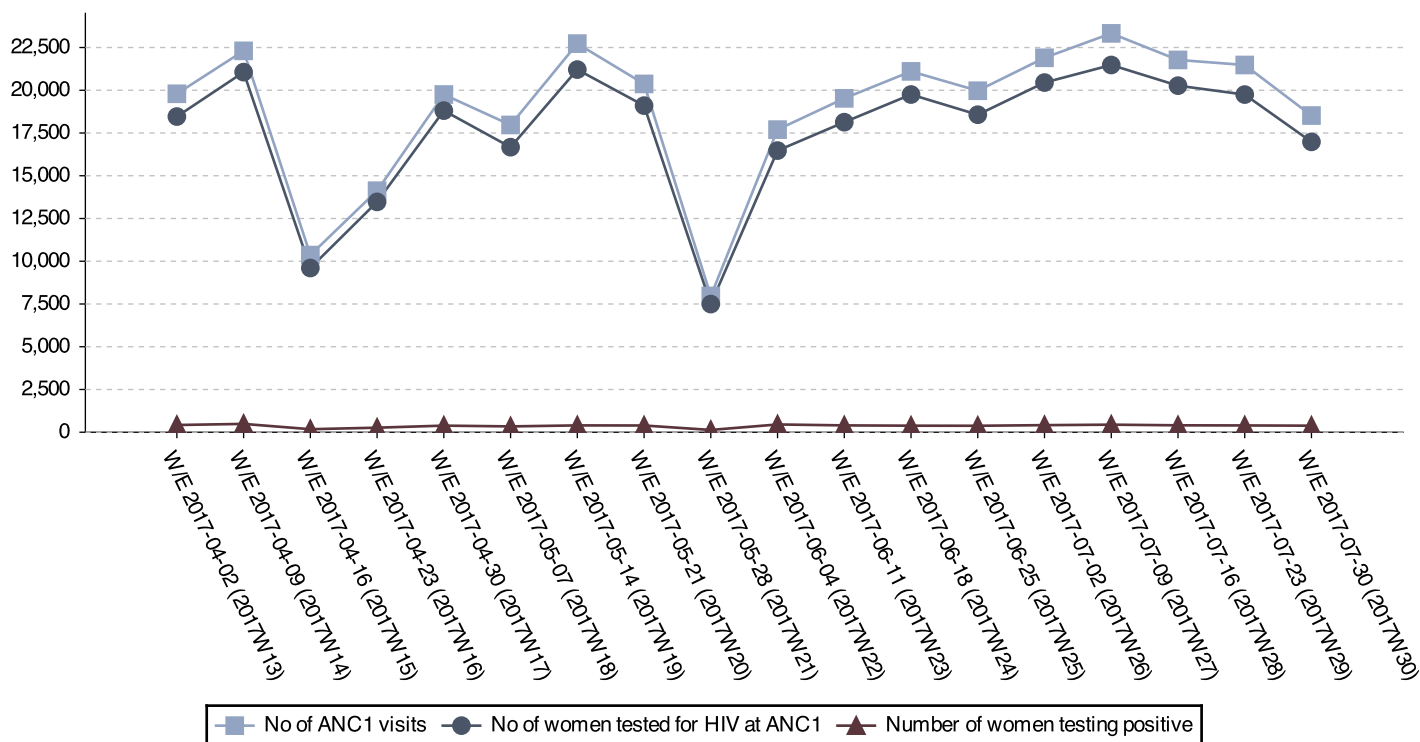
IP	Test kit stockout	ARV stockout
RHITES-SW	23	3
STAR-E	19	4
RHITES-EC	13	2
TASO Teso	12	5
Mildmay	10	3
PREFA	9	6
Baylor	5	3
RTI	4	1
USAID ASSIST	4	3
Walter Reed	3	1
CUAMM	3	3
MJAP	2	0
TASO	2	0
SUSTAIN	1	0
IRCU	1	2
RHSP	1	0
IDI	1	1
USAID PHS	1	2
HIWA	1	0
<b>Total</b>	<b>115</b>	<b>39</b>



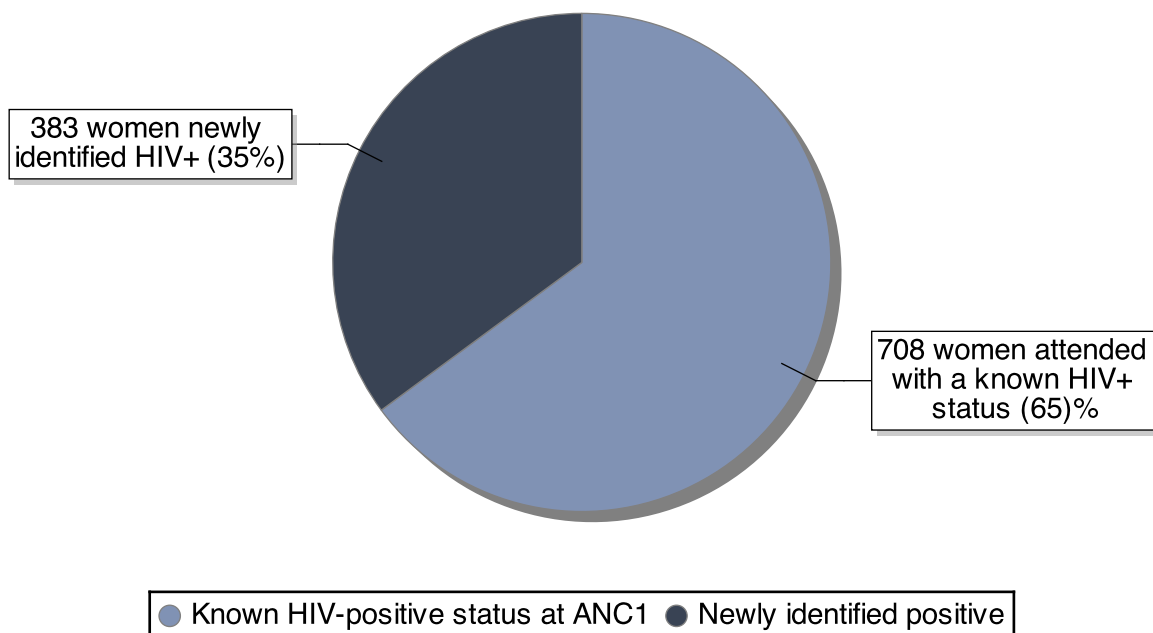
# Ministry of Health Option B+ Weekly Report (3.2)

Week ending 2017-07-30 (2017W30)

ANC trends for the last 18 weeks



Break down of existing vs. newly identified infections



Ratio newly identified / already known status: 0.54

# Ministry of Health Option B+ Weekly Report (3.2)

Week ending 2017-07-30 (2017W30)

## District Service Delivery Focus

### High HIV+ EID Testing

This section shows 20 districts with high proportions of HIV+ 1st PCR EID tests. Please consider both the actual number and the proportion.

District	# EID Tests	# Positive	% Positive
Amudat	3	1	33.33
Bududa	5	1	20.00
Buvuma	13	2	15.38
Abim	7	1	14.29
Amolatar	18	2	11.11
Bulambuli	9	1	11.11
Kaberamaido	19	2	10.53
Agago	33	3	9.09
Butaleja	11	1	9.09
Adjumani	11	1	9.09
Alebtong	23	2	8.70
Kanungu	23	2	8.70
Lamwo	25	2	8.00
Serere	38	3	7.89
Lyantonde	38	3	7.89
Yumbe	13	1	7.69
Isingiro	56	4	7.14
Kasese	45	3	6.67
Mityana	78	5	6.41
Kyenjojo	95	6	6.32
Lwengo	48	3	6.25
Mayuge	33	2	6.06
Kabale	53	3	5.66
Dokolo	18	1	5.56
Apac	36	2	5.56

### Low initiation on ART

This section shows 15 districts with low ART initiation rates. Please consider the actual ART need in addition to the proportion.

District	ART Need	# Initiated	% Initiated
Ntoroko	1	0	0
Kole District	1	0	0
Nakapiripirit	1	0	0
Moyo District	1	0	0
Budaka	1	0	0
Busia District	3	0	0
Kibuku	4	0	0
Kabale	4	0	0
Mayuge	5	1	20
Lamwo	3	1	33
Tororo	3	1	33
Yumbe	2	1	50
Arua District	2	1	50
Bulambuli	2	1	50
Bundibugyo	2	1	50

## Data Quality challenges by IP

### 'Overtesting'

IPs listed here have 'overtested' – which means that there are issues with data quality. Ensure that facilities have the latest version of the job aide, and that health workers understand that most indicators pertain to ANC1 visits only.

IP	# ANC1 Visits	# Tested	% Tested
RTI	92	99	119
UHMG	26	29	116
UPMB	114	115	104

### 'Overinitiating'

IPs listed here have 'overinitiated' – which means that there are issues with data quality. Ensure that facilities have the latest version of the job aide, and that health workers understand that most indicators pertain to ANC1 visits only.

IP	ART Need	# Initiated	% Initiated
RHITES-SW	37	149	360
TASO	5	6	120
SUSTAIN	12	14	117
Mildmay	70	79	107
UCMB	14	15	107
USAID PHS	7	11	107

None of the proportions mentioned above should exceed 100%, as all proportions relate to ANC1 visits only. They take both women with a known positive status and women already on ART into consideration. Please see <http://reports.dhis2sms.ug> for further details, including detailed facility data.